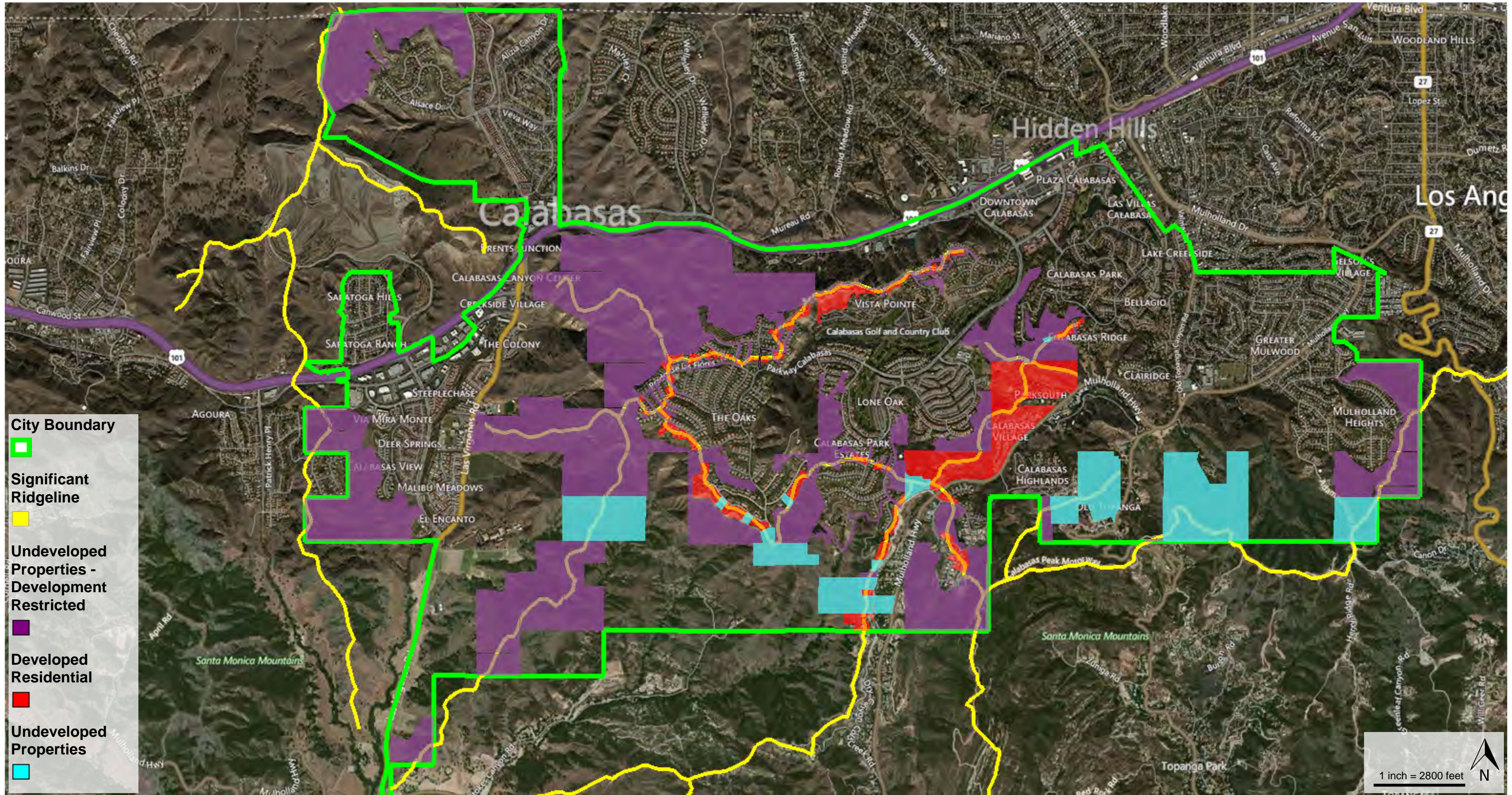


Significant Ridgeline Properties



July 23, 2015



Undeveloped Properties - Development Restricted Ridgeline Properties

#	APN	Map Color	Ownership	Lot Size (Acres)	Lot Size (Square Feet)	HOA	Zone
1	4455002905		State of CA Mountains Rec	28.18	1,227,656	NA	OS-DR
2	4455003050		Private	32.72	1,425,170	NA	RS OS OS-DR HM
3	2063045902		Calabasas City	30.98	1,349,545	NA	OS-DR
4	2063045900		Calabasas City	120.98	5,269,924	NA	OS-DR
5	4455028904		Calabasas City	28.66	1,248,521	NA	OS-DR
6	2069064036		Calabasas Hills Community	19.20	836,191	Calabasas Hills	OS-DR
7	2069058021		Calabasas Hills Community	11.82	514,792	Calabasas Hills	OS-DR
8	2069006024		Calabasas Hills Community	45.92	2,000,275	Calabasas Hills	OS-DR
9	2069017024		Calabasas Park Estates Owners	34.43	1,499,749	Calabasas Park Estates	OS-DR
10	2069017019		Calabasas Park Estates Owners	2.31	100,737	Calabasas Park Estates	OS-DR
11	4455057091		Calabasas Park Estates Owners	8.48	369,267	Calabasas Park Estates	OS-DR
12	2069077030		Calabasas Park Estates Owners	4.43	193,054	Calabasas Park Estates	RS
13	2069077028		Calabasas Park Estates Owners	0.95	41,312	Calabasas Park Estates	RS
14	2069040111		Calabasas Park Estates Owners	0.79	34,604	Calabasas Park Estates	RS
15	2069040110		Calabasas Park Estates Owners	0.82	35,554	Calabasas Park Estates	RS

Undeveloped Properties - Development Restricted Ridgeline Properties

16	2069076042		Calabasas Park Estates Owners	1.20	52,128	Calabasas Park Estates	RS
17	4455057025		Calabasas Park Estates Owners	1.73	75,437	Calabasas Park Estates	RS HM
18	4455057085		Calabasas Parl Estates Owners	4.84	210,904	Calabasas Park Estates	RS
19	2069066035		Calabasas Ridge HOA	0.50	21,619	Calabasas Ridge	RS
20	2069015043		Calabasas Ridge HOA	5.04	219,712	Calabasas Ridge	RS OS-DR
21	2069015042		Calabasas Ridge Homeowners	37.65	1,639,999	Calabasas Ridge	RS OS-DR
22	2069090043		Estates of the Oaks HOA	5.28	230,027	The Oaks	RS
23	2069090035		Estates of the Oaks HOA	0.83	36,007	The Oaks	RS
24	2080013016		Private	50.21	2,187,357	Mulholland Heights	OS-DR
25	2080020905		LA CO Waterworks District	0.71	30,719	Old Topanga	HM
26	2080020903		LA County	0.49	21,423	Old Topanga	HM
27	2080023901		Las Virgenes Mun Water	0.69	29,939	Mulholland Heights	PF
28	4455027904		Las Virgenes Mun Water	20.43	890,088	NA	OS-DR
29	4455026902		Las Virgenes Mun Water	42.25	1,840,523	NA	OS-DR
30	4455026903		Las Virgenes Mun Water	71.45	3,112,292	NA	OS-DR
31	4455002904		Las Virgenes Mun Water	10.05	437,682	NA	OS-DR
32	4455002902		Las Virgenes Mun Water	29.25	1,274,261	NA	OS-DR

Undeveloped Properties - Development Restricted Ridgeline Properties

33	4455001902		Las Virgenes Mun Water	20.45	890,776	NA	OS-DR
34	2069078905		Las Virgenes Mun Water	0.52	22,673	NA	OS-DR
35	2069011910		Las Virgenes Mun Water	71.76	3,125,835	NA	OS-DR
36	2069078900		Las Virgenes Mun Water	1.85	80,425	NA	OS-DR PF
37	2069011906		Las Virgenes Mun Water	2.96	128,750	NA	PF
38	4455006900		Las Virgenes Mun Water	0.42	18,483	NA	PF
39	2069013901		Las Virgenes Mun Water	0.40	17,507	NA	PF
40	2069013900		Las Virgenes Mun Water	0.41	17,929	NA	PF
41	4455054021		Mountain Park Homeowners	10.31	449,095	Mountain Park	OS
42	4455053025		Mountains Park HOA	16.13	702,679	Mountain Park	OS-DR
43	4455057097		Mountains Restoration Trust	2.16	94,303	NA	OS
44	4455006901		Mountains, Recreation	111.06	4,837,665	NA	HM
45	2080023034		Mulholland Heights Association	69.76	3,038,706	Mulholland Heights	OS-DR
46	2069099047		Oaks of Calabasas HOA	1.02	44,475	The Oaks	OS-DR RS
47	2069086011		Oaks of Calabasas HOA	2.78	121,310	The Oaks	OS-DR RS
48	2069101015		Oaks of Calabasas HOA	18.89	822,700	The Oaks	OS-DR RS
49	2069091032		Oaks of Calabasas HOA	0.95	41,582	The Oaks	RS

Undeveloped Properties - Development Restricted Ridgeline Properties

50	2069095032		Oaks of Calabasas HOA	0.81	35,231	The Oaks	RS
51	2069095033		Oaks of Calabasas HOA	1.11	48,482	The Oaks	RS
52	2069081045		Oaks of Calabasas HOA	0.94	41,007	The Oaks	RS
53	2069085038		Oaks of Calabasas HOA	1.10	47,912	The Oaks	RS
54	2069080028		Oaks of Calabasas HOA	1.04	45,137	The Oaks	RS
55	2069088036		Oaks of Calabasas HOA	1.51	65,649	The Oaks	RS
56	2069088035		Oaks of Calabasas HOA	0.45	19,624	The Oaks	RS
57	2069087019		Oaks of Calabasas HOA	5.40	235,111	The Oaks	RS
58	2069100039		Oaks of Calabasas HOA	0.91	39,753	The Oaks	RS
59	2069102023		Oaks of Calabasas HOA	3.00	130,610	The Oaks	RS
60	2069091014		Oaks of Calabasas HOA	3.88	169,017	The Oaks	RS
61	2069098019		Oaks of Calabasas HOA	1.29	56,406	The Oaks	RS
62	2069099023		Oaks of Calabasas HOA	1.40	61,036	The Oaks	RS
63	2069099024		Oaks of Calabasas HOA	2.43	105,772	The Oaks	RS
64	2069033021		Pointe Vista Association	1.31	57,068	Vista Pointe	RS
65	2069027042		Pointe Vista Association	1.41	61,463	Vista Pointe	RS
66	2069022030		Pointe, Vista Investors	14.51	631,847	Vista Pointe	RS

Undeveloped Properties - Development Restricted Ridgeline Properties

67	2063045001		Private	4.04	175,978	NA	OS-DR
68	2072023902		Santa Monica Conservancy	10.27	447,540	NA	HM
69	2080013902		State of CA Mountains Rec	18.66	812,764	Mulholland Heights	OS-DR
70	4455027905		State of CA Mountains Rec	20.45	890,728	NA	OS-DR
71	4455001903		State of CA Mountains Rec	59.94	2,611,152	NA	OS-DR
72	2069078906		State of CA Mountains Rec	345.79	15,062,717	NA	OS-DR
73	2069078902		State of CA Mountains Rec	74.38	3,239,797	NA	OS-DR
74	2069078901		State of CA Mountains Rec	214.44	9,341,189	NA	OS-DR
75	2069084019		The Oaks of Calabasas HOA	7.13	310,657	The Oaks	RS OS-DR
76	2052005903		US Government	163.48	7,121,263	NA	OS-DR
77	2069033063		Vista Pointe Owners Association	2.05	89,411	Vista Pointe	RS
78	2069033061		Vista Pointe Owners Association	6.48	282,321	Vista Pointe	RS
79	2069033022		Vista Pointe Owners Association	0.78	33,890	Vista Pointe	RS
80	2069043075		Westridge Calabasas Park HOA	2.42	105,411	Westridge	RS
81	4455003049		Private	2.45	106,644		HM

Developed Residential Ridgeline Properties

#	APN	Map Color	Address	Lot Size (Acres)	Lot Size (Square Feet)	Building Area	Built	HOA	Zone
1	2069066012		23464 Park Colombo, Calabasas, CA 91302	0.58	25,199	5,563	1997	Calabasas Ridge	RS
2	2069066037		23472 Park Colombo, Calabasas, CA 91302			2,762		Calabasas Ridge	RS
3	2069066013		23472 Park Colombo, Calabasas, CA 91302	0.48	20,992	4,637	1990	Calabasas Ridge	RS
4	2069066044		23477 Park Colombo, Calabasas, CA 91302	0.24	10,241	5,273	1996	Calabasas Ridge	RS
5	2069066038		23480 Park Colombo, Calabasas, CA 91302	0.33	14,270	6,546	1995	Calabasas Ridge	RS
6	2069066043		23483 Park Colombo, Calabasas, CA 91302	0.59	25,857	10,059	1995	Calabasas Ridge	RS
7	2069066039		23484 Park Colombo, Calabasas, CA 91302	0.77	33,441	9,377	1993	Calabasas Ridge	RS
8	2069066040		23486 Park Colombo, Calabasas, CA 91302	1.11	48,474	6,389	1999	Calabasas Ridge	RS
9	2069013037		23525 Park South St., Calabasas, CA 91302	12.71	553,504	6,153	1998	Parksouth	RR RS
10	2069013036		23545 Park South St., Calabasas, CA 91302	3.14	136,770	6,784	1999	Parksouth	OS RS
11	2069013035		23553 Park South St., Calabasas, CA 91302	3.08	134,108	4,776	1997	Parksouth	OS RS
12	2069013045		23565 Park South St., Calabasas, CA 91302	3.49	151,885	6,890	1999	Parksouth	OS RS
13	2069013042		23575 Park South St., Calabasas, CA 91302	3.74	162,819	7,029	1997	Parksouth	OS RS
14	2069013032		23585 Park South St., Calabasas, CA 91302	4.79	208,853	7,938	1998	Parksouth	OS RS
15	2069013028		23590 Park South St., Calabasas, CA 91302	3.54	154,146	15,045	1990	Parksouth	OS RS
16	2069013040		23593 Park South St., Calabasas, CA 91302	8.34	363,360	8,152	2001	Parksouth	OS RS
17	2069013049		23597 Park South St., Calabasas, CA 91302	11.50	500,892	8,925	2001	Parksouth	OS RS

Developed Residential Ridgeline Properties

18	2069015021		23600 Calabasas Rd., Calabasas, CA 91302	0.75	32,796			Calabasas Ridge	OS
19	2069013016		23777 Mulholland Hwy., Calabasas, CA 91302	45.14	1,966,307	5,564	1973	Calabasas Village	RMH
20	4455054015		24010 Alder Pl., Calabasas, CA 91302	0.88	38,450	7,128	1997	Mountain Park	RS
21	4455054020		24011 Alder Pl., Calabasas, CA 91302	1.01	44,035	5,198	1990	Mountain Park	RS
22	4455054022		24021 Alder Pl., Calabasas, CA 91302	1.17	50,843	7,390	1990	Mountain Park	RS
23	4455051005		24067 Chestnut Way, Calabasas, CA 91302	0.70	30,544	4,037	1987	Mountain Park	RS
24	4455051018		24072 Chestnut Way, Calabasas, CA 91302	0.90	39,208	4,397	1987	Mountain Park	RS
25	4455051004		24075 Chestnut Way, Calabasas, CA 91302	1.32	57,504	2,952	1987	Mountain Park	RS
26	4455006019		24107 Saint Andrews Ln., Calabasas, CA 91302	27.88	1,214,544	8,732	2006	NA	OS
27	4455006018		24111 Saint Andrews Ln., Calabasas, CA 91302	2.72	118,496	4,458	1988	NA	OS
28	4455006017		24115 Saint Andrews Ln., Calabasas, CA 91302	13.00	566,293	3,657	1988	NA	OS
29	4455006016		24119 Saint Andrews Ln., Calabasas, CA 91302	9.77	425,629	4,413	1989	NA	OS
30	2069043045		24216 Park Granada, Calabasas, CA 91302	0.38	16,657	4,582	1987	Westridge	RS
31	2069043046		24226 Park Granada, Calabasas, CA 91302	0.28	12,136	4,992	1987	Westridge	RS
32	2069043047		24236 Park Granada, Calabasas, CA 91302	0.26	11,286	4,470	1988	Westridge	RS
33	2069043048		24246 Park Granada, Calabasas, CA 91302	0.25	10,999	5,056	1988	Westridge	RS
34	4455047001		24255 Dry Canyon Cold Creek Rd., Calabasas, CA 91302	1.42	61,690	5,278	1979	NA	OS

Developed Residential Ridgeline Properties

35	4455047002		24257 Dry Canyon Cold Creek Rd., Calabasas, CA 91302	1.33	57,795	3,217	1979	NA	OS
36	2069043049		24258 Park Granada, Calabasas, CA 91302	0.23	10,232	4,176	1988	Westridge	RS
37	4455047003		24259 Dry Canyon Cold Creek Rd., Calabasas, CA 91302	1.49	64,904	3,634	1979	NA	OS
38	2069043078		24278 Park Granada, Calabasas, CA 91302	0.43	18,822	4,992	1988	Westridge	RS
39	4455004033		24321 Dry Canyon Cold Creek Rd., Calabasas, CA 91302	1.66	72,175	2,160	1971	NA	HM RR
40	4455004063		24353 Dry Canyon Cold Creek Rd., Calabasas, CA 91302	2.72	118,684	3,532	1981	NA	HM RR
41	4455004064		24355 Dry Canyon Cold Creek Rd., Calabasas, CA 91302	2.55	111,082	3,969	1981	NA	HM
42	2069033032		24356 Park Granada, Calabasas, CA 91302	0.39	16,832	5,209	1987	Vista Pointe	RS
43	2069090031		24359 Dry Canyon Cold Creek Rd., Calabasas, CA 91302	6.34	276,223			The Oaks	RS
44	2069033059		24359 La Masina Ct., Calabasas, CA 91302	0.28	12,258	9,991	1987	Vista Pointe	RS
45	2069033066		24366 La Masina Ct., Calabasas, CA 91302	0.43	18,535	9,166	1987	Vista Pointe	RS
46	2069033034		24368 Park Granada, Calabasas, CA 91302	0.26	11,482	3,245	1986	Vista Pointe	RS
47	2069033068		24373 La Masina Ct., Calabasas, CA 91302	0.43	18,626	6,706	1985	Vista Pointe	RS
48	2069027021		24412 Park Granada, Calabasas, CA 91302	0.25	11,099	3,171	1981	Vista Pointe	RS
49	2069027022		24418 Park Granada, Calabasas, CA 91302	0.16	6,795	2,866	1981	Vista Pointe	RS
50	2069027023		24426 Park Granada, Calabasas, CA 91302	0.19	8,255	3,473	1981	Vista Pointe	RS

Developed Residential Ridgeline Properties

51	2069027024		24432 Park Granada, Calabasas, CA 91302	0.18	7,867	2,871	1981	Vista Pointe	RS
52	2069027025		24438 Park Granada, Calabasas, CA 91302	0.19	8,493	3,681	1981	Vista Pointe	RS
53	2069027026		24446 Park Granada, Calabasas, CA 91302	0.19	8,141	3,867	1981	Vista Pointe	RS
54	2069027027		24452 Park Granada, Calabasas, CA 91302	0.22	9,400	2,854	1981	Vista Pointe	RS
55	2069027028		24458 Park Granada, Calabasas, CA 91302	0.23	9,892	3,867	1981	Vista Pointe	RS
56	2069027029		24464 Park Granada, Calabasas, CA 91302	0.22	9,592	2,889	1981	Vista Pointe	RS
57	2069027030		24470 Park Granada, Calabasas, CA 91302	0.22	9,466	3,418	1981	Vista Pointe	RS
58	2069027031		24478 Park Granada, Calabasas, CA 91302	0.20	8,830	3,648	1981	Vista Pointe	RS
59	2069027032		24486 Park Granada, Calabasas, CA 91302	0.18	7,950	3,923	1981	Vista Pointe	RS
60	2069027033		24492 Park Granada, Calabasas, CA 91302	0.19	8,137	3,499	1981	Vista Pointe	RS
61	2069027034		24498 Park Granada, Calabasas, CA 91302	0.23	9,849	2,907	1981	Vista Pointe	RS
62	2069024028		24504 Cordillera Dr., Calabasas, CA 91302	0.26	11,474	4,218	1985	Vista Pointe	RS
63	2069024029		24512 Cordillera Dr., Calabasas, CA 91302	0.16	7,179	4,723	1986	Vista Pointe	RS
64	2069024030		24522 Cordillera Dr., Calabasas, CA 91302	0.18	7,958	3,960	1985	Vista Pointe	RS
65	4455004065		2459 Dry Canyon Cold Creek Rd., Calabasas, CA 91302	2.47	107,746	6,885	1981	NA	HM
66	2069029028		24608 Cordillera Dr., Calabasas, CA 91302	0.33	14,418	4,664	1985	Vista Pointe	RS
67	2069029029		24620 Cordillera Dr., Calabasas, CA 91302	0.25	10,794	4,836	1983	Vista Pointe	RS
68	2069029030		24630 Cordillera Dr., Calabasas, CA 91302	0.23	10,180	3,695	1985	Vista Pointe	RS

Developed Residential Ridgeline Properties

69	2069029031		24638 Cordillera Dr., Calabasas, CA 91302	0.19	8,355	4,638	1986	Vista Pointe	RS
70	2069029032		24648 Cordillera Dr., Calabasas, CA 91302	0.18	7,667	4,110	1988	Vista Pointe	RS
71	2069029033		24654 Cordillera Dr., Calabasas, CA 91302	0.15	6,708	3,054	1988	Vista Pointe	RS
72	2069029034		24658 Cordillera Dr., Calabasas, CA 91302	0.17	7,340	4,139	1990	Vista Pointe	RS
73	2069029035		24664 Cordillera Dr., Calabasas, CA 91302	0.18	7,645	3,483	1988	Vista Pointe	RS
74	2069029069		24670 Cordillera Dr., Calabasas, CA 91302	0.29	12,563	4,757	1987	Vista Pointe	RS
75	2069029068		24686 Cordillera Dr., Calabasas, CA 91302	0.29	12,584	5,465	1986	Vista Pointe	RS
76	2069029039		24698 Cordillera Dr., Calabasas, CA 91302	0.18	7,749	4,683	1988	Vista Pointe	RS
77	2069029040		24702 Cordillera Dr., Calabasas, CA 91302	0.19	8,385	3,228	1985	Vista Pointe	RS
78	2069029041		24708 Cordillera Dr., Calabasas, CA 91302	0.23	9,967	3,520	1988	Vista Pointe	RS
79	2069029042		24716 Cordillera Dr., Calabasas, CA 91302	0.22	9,653	3,037	1997	Vista Pointe	RS
80	2069029043		24722 Cordillera Dr., Calabasas, CA 91302	0.20	8,738	3,723	1984	Vista Pointe	RS
81	2069029044		24728 Cordillera Dr., Calabasas, CA 91302	0.24	10,550	3,450	1984	Vista Pointe	RS
82	2069029045		24734 Cordillera Dr., Calabasas, CA 91302	0.26	11,395	3,784	1984	Vista Pointe	RS
83	2069029046		24740 Cordillera Dr., Calabasas, CA 91302	0.23	9,910	3,489	1989	Vista Pointe	RS
84	2069029047		24754 Cordillera Dr., Calabasas, CA 91302	0.25	10,742	5,416	1996	Vista Pointe	RS
85	2069029070		24762 Cordillera Dr., Calabasas, CA 91302	0.47	20,604	7,524	1986	Vista Pointe	RS
86	2069040090		24826 Earls Ct., Calabasas, CA 91302	0.31	13,499	3,436	1992	Calabasas Park Estates	RS

Developed Residential Ridgeline Properties

87	2069040091		24832 Earls Ct., Calabasas, CA 91302	0.28	12,327	3,602	1997	Calabasas Park Estates	RS
88	2069040092		24836 Earls Ct., Calabasas, CA 91302	0.28	11,996	3,213	1992	Calabasas Park Estates	RS
89	2069077040		24903 Lorenzo Ct., Calabasas, CA 91302	0.28	12,240	3,916	1994	Calabasas Park Estates	RS
90	2069077024		24915 Lorenzo Ct., Calabasas, CA 91302	0.29	12,706	3,069	1994	Calabasas Park Estates	RS
91	2069077023		24923 Lorenzo Ct., Calabasas, CA 91302	0.31	13,695	3,787	1995	Calabasas Park Estates	RS
92	2069077022		24931 Lorenzo Ct., Calabasas, CA 91302	0.31	13,565	3,379	1996	Calabasas Park Estates	RS
93	2069077021		24937 Lorenzo Ct., Calabasas, CA 91302	0.34	14,854	3,551	1997	Calabasas Park Estates	RS
94	2069088040		25010 Prado De Los Pajaros, Calabasas, CA 91302	0.34	15,024	6,020	2003	The Oaks	RS
95	2069090026		25222 Prado Del Grandioso, Calabasas, CA 91302	1.61	69,927	10,622	2009	The Oaks	RS
96	2069087015		25230 Prado De Las Panteras, Calabasas, CA 91302	0.50	21,697	4,682	2002	The Oaks	RS
97	2069087008		25232 Prado De La Puma, Calabasas, CA 91302	0.43	18,792	3,600	2004	The Oaks	RS
98	2069090025		25232 Prado Del Grandioso, Calabasas, CA 91302	1.52	66,268	9,253	2006	The Oaks	RS

Developed Residential Ridgeline Properties

99	2069087014		25239 Prado De Las Panteras, Calabasas, CA 91302	0.50	21,806	4,594	2002	The Oaks	RS
100	2069087009		25240 Prado De La Puma, Calabasas, CA 91302	0.42	18,165	6,405	2004	The Oaks	RS
101	2069090024		25242 Prado Del Grandioso, Calabasas, CA 91302	1.14	49,536	12,235	2006	The Oaks	RS
102	2069090023		25252 Prado Del Grandioso, Calabasas, CA 91302	1.15	49,894	9,697	20006	The Oaks	RS
103	2069090040		25302 Prado De La Magia, Calabasas, CA 91302	1.83	79,771	8,572	2008	The Oaks	RS
104	2069089031		25304 Prado De La Felicidad, Calabasas, CA 91302	1.42	61,851	11,488	2008	The Oaks	RS
105	2069089029		25324 Prado De La Felicidad, Calabasas, CA 91302	1.69	73,808	9,470	2007	The Oaks	RS
106	2069089028		25334 Prado De La Felicidad, Calabasas, CA 91302	1.99	86,793	10,479	2008	The Oaks	RS
107	2069089027		25344 Prado De La Felicidad, Calabasas, CA 91302	1.86	80,961	11,746	2011	The Oaks	OS-DR RS
108	2069089025		25364 Prado De La Felicidad, Calabasas, CA 91302	1.59	69,391	10,565	2009	The Oaks	OS-DR RS
109	2069089015		25374 Prado De La Felicidad, Calabasas, CA 91302	2.28	99,430	10,475	2006	The Oaks	RS
110	2069095002		25381 Prado De Las Peras, Calabasas, CA 91302	0.30	13,199	4,851	2006	The Oaks	RS

Developed Residential Ridgeline Properties

111	2069089014		25384 Prado De La Felicidad, Calabasas, CA 91302	3.15	137,266	11,127	2006	The Oaks	OS-DR RS
112	2069089013		25394 Prado De La Felicidad, Calabasas, CA 91302	2.10	91,541	9,197	2006	The Oaks	OS-DR RS
113	2069089012		25400 Prado De La Felicidad, Calabasas, CA 91302	1.99	86,876			The Oaks	OS-DR RS
114	2069089011		25408 Prado De La Felicidad, Calabasas, CA 91302	1.85	80,616	13,400	2007	The Oaks	OS-DR RS
115	2069100042		25410 Prado De Azul, Calabasas, CA 91302	0.51	22,137	6,797	2006	The Oaks	RS
116	2069095017		25410 Prado De Las Peras, Calabasas, CA 91302	0.40	17,576	3,686	2004	The Oaks	RS
117	2069091017		25411 Prado De Amor, Calabasas, CA 91302	0.40	17,354	5,968	2006	The Oaks	RS
118	2069100043		25420 Prado De Azul, Calabasas, CA 91302	0.53	23,148	5,149	2006	The Oaks	RS
119	2069095016		25420 Prado De Las Peras, Calabasas, CA 91302	0.43	18,552	4,130	2004	The Oaks	RS
120	2069091018		25421 Prado De Amor, Calabasas, CA 91302	0.54	23,592	5,968	2006	The Oaks	RS
121	2069100044		25430 Prado De Azul, Calabasas, CA 91302	0.47	20,491	5,968	2006	The Oaks	RS
122	2069095015		25430 Prado De Las Peras, Calabasas, CA 91302	0.41	18,025	4,256	2004	The Oaks	RS
123	2069100045		25440 Prado De Azul, Calabasas, CA 91302	0.42	18,435	5,149	2006	The Oaks	RS
124	2069095014		25440 Prado De Las Peras, Calabasas, CA 91302	0.39	17,054	4,611	2004	The Oaks	RS
125	2069100046		25450 Prado De Azul, Calabasas, CA 91302	0.47	20,639	6,745	2006	The Oaks	RS

Developed Residential Ridgeline Properties

126	2069091021		25451 Prado De Amor, Calabasas, CA 91302	0.37	16,008	4,618	2006	The Oaks	RS
127	2069095022		25455 Prado De Las Calabasas, Calabasas, CA 91302	0.29	12,789	5,181	2005	The Oaks	RS
128	2069091022		25461 Prado De Amor, Calabasas, CA 91302	0.37	16,165	4,851	2006	The Oaks	RS
129	2069095026		25470 Prado De Las Calabasas, Calabasas, CA 91302	0.43	18,583	5,181	2005	The Oaks	RS
130	2069091023		25471 Prado De Amor, Calabasas, CA 91302	0.36	15,686	5,409	2006	The Oaks	RS
131	2069095025		25473 Prado De Las Calabasas, Calabasas, CA 91302	0.50	21,837	4,618	2005	The Oaks	RS
132	2069091024		25481 Prado De Amor, Calabasas, CA 91302	0.70	30,462	4,851	2006	The Oaks	RS
133	2069091026		25490 Prado De Amor, Calabasas, CA 91302	0.57	24,725	6,745	2006	The Oaks	RS
134	2069100051		25490 Prado De Azul, Calabasas, CA 91302	0.68	29,407	6,484	2006	The Oaks	RS
135	2069091025		25491 Prado De Amor, Calabasas, CA 91302	0.66	28,941	4,851	2006	The Oaks	OS-DR RS
136	2069100033		25500 Prado De Azul, Calabasas, CA 91302	0.64	27,870	5,858	2006	The Oaks	RS
137	2069100034		25510 Prado De Azul, Calabasas, CA 91302	0.65	28,519	6,745	2006	The Oaks	RS
138	2069091034		25511 Prado De Las Flores, Calabasas, CA 91302	1.08	47,175	6,807	2005	The Oaks	RS
139	2069100035		25516 Prado De Azul, Calabasas, CA 91302	1.05	45,851	6,797	2006	The Oaks	RS
140	2069100036		25520 Prado De Azul, Calabasas, CA 91302	0.48	20,957	5,149	2006	The Oaks	RS
141	2069100030		25521 Prado De Azul, Calabasas, CA 91302	0.40	17,224	6,797	2006	The Oaks	RS
142	2069099016		25530 Prado De Oro, Calabasas, CA 91302	0.29	12,794	4,851	2006	The Oaks	RS

Developed Residential Ridgeline Properties

143	2069100029		25531 Prado De Azul, Calabasas, CA 91302	0.37	16,078	5,968	2006	The Oaks	RS
144	2069098045		25540 Prado De Las Bellotas, Calabasas, CA 91302	0.62	26,924	5,181	2005	The Oaks	RS
145	2069099017		25540 Prado De Oro, Calabasas, CA 91302	0.29	12,794	4,618	2006	The Oaks	RS
146	2069100028		25541 Prado De Azul, Calabasas, CA 91302	0.33	14,466	6,745	2006	The Oaks	RS
147	2069098047		25550 Prado De Las Bellotas, Calabasas, CA 91302	0.51	22,412	4,618	2005	The Oaks	RS
148	2069100027		25551 Prado De Azul, Calabasas, CA 91302	0.35	15,102	5,968	2006	The Oaks	RS
149	2069099006		25551 Prado De Oro, Calabasas, CA 91302	0.28	12,084	4,603	2006	The Oaks	RS
150	2069098015		25560 Prado De Las Bellotas, Calabasas, CA 91302	0.47	20,373	5,181	2005	The Oaks	RS
151	2069099035		25571 Prado De Amarillo, Calabasas, CA 91302	0.51	22,211	5,149	2006	The Oaks	RS
152	2069098004		25571 Prado De Las Bellotas, Calabasas, CA 91302	0.37	16,217	4,618	2005	The Oaks	RS
153	2069098003		25581 Prado De Las Bellotas, Calabasas, CA 91302	0.37	16,283	4,851	2005	The Oaks	RS
154	2069098002		25591 Prado De Las Bellotas, Calabasas, CA 91302	0.39	16,936	5,181	2005	The Oaks	RS
155	2069099034		25598 Prado De Azul, Calabasas, CA 91302	0.46	19,959	6,480	2005	The Oaks	OS-DR RS
156	2069013048		2594 Park South Street, Calabasas, CA 91302	15.32	667,274			Parksouth	OS RS
157	4455054004		3106 Mountain Park Dr., Calabasas, CA 91302	1.16	50,617	4,714	1992	Mountain Park	RS

Developed Residential Ridgeline Properties

158	4455054003		3124 Mountain Park Dr., Calabasas, CA 91302	1.17	50,848	4,178	1997	Mountain Park	RS
159	4455054002		3150 Mountain Park Dr., Calabasas, CA 91302	1.07	46,465	4,883	1996	Mountain Park	RS
160	4455054001		3190 Mountain Park Dr., Calabasas, CA 91302	1.83	79,554	6,788	1996	Mountain Park	RS
161	4455053026		3240 Oakridge Ter, Calabasas, CA 91302	1.14	49,610	6,178	1996	Mountain Park	RS
162	4455057004		3300 Cordova Dr., Calabasas, CA 91302	1.08	47,258	5,416	2002	NA	HM
163	4455057083		3300 Via Verde Ct., Calabasas, CA 91302	0.77	33,659	5,042	1999	Calabasas Park Estates	RS
164	4455057082		3308 Via Verde Ct., Calabasas, CA 91302	0.48	21,118	4,341	1999	Calabasas Park Estates	RS
165	4455053017		3310 Oakridge Ter, Calabasas, CA 91302	1.28	55,909	5,890	1996	Mountain Park	RS
166	4455057084		3312 Via Verde Ct., Calabasas, CA 91302	0.48	20,961	5,193	2002	Calabasas Park Estates	RS
167	4455057081		3316 Via Verde Ct., Calabasas, CA 91302	0.57	24,947	4,341	1999	Calabasas Park Estates	RS
168	4455057080		3324 Via Verde Ct., Calabasas, CA. 91302	0.89	38,903	5,041	2001	Calabasas Park Estates	RS
169	4455057079		3351 Cordova Dr., Calabasas, CA 91302	0.65	28,105	5,672	2000	Calabasas Park Estates	RS
170	2069040117		3433 Cordova Dr., Calabasas, CA 91302	0.26	11,291	3,646	1999	Calabasas Park Estates	RS
171	2069040058		3441 Cordova Dr., Calabasas, CA 91302	0.22	9,540	4,573	1997	Calabasas Park Estates	RS

Developed Residential Ridgeline Properties

172	2069077027		3513 Consuelo Dr., Calabasas, CA 91302	0.29	12,476	3,069	1994	Calabasas Park Estates	RS
173	2069100049		3780 Prado De Fucsia, Calabasas, CA 91302	0.57	24,781	7,417	2006	The Oaks	RS
174	2069100050		3781 Prado De Fucsia, Calabasas, CA 91302	0.58	25,169	7,196	2006	The Oaks	RS
175	2069100048		3790 Prado De Fucsia, Calabasas, CA 91302	0.40	17,637	5,149	2006	The Oaks	RS
176	2069081026		4101 Prado De Los Zorros, Calabasas, CA 91302	0.27	11,861	4,492	2003	The Oaks	RS
177	2069081053		4102 Prado De Las Cabras, Calabasas, CA 91302	0.29	12,563	4,492	2003	The Oaks	RS
178	2069081051		4113 Prado De Las Cabras, Calabasas, CA 91302	0.37	16,239	4,366	2003	The Oaks	RS
179	2069081029		4120 Prado De Los Zorros, Calabasas, CA 91302	0.25	10,890	4,474	2004	The Oaks	RS
180	2069081041		4129 Prado De La Puma, Calabasas, CA 91302	0.41	17,995	4,492	2004	The Oaks	RS
181	2069085028		4130 Prado De La Puma, Calabasas, CA 91302	0.53	23,287	3,600	2003	The Oaks	RS
182	2069080010		4130 Prado De Los Caballos, Calabasas, CA 91302	0.46	19,837	6,255	2003	The Oaks	RS
183	2069081030		4130 Prado De Los Zorros, Calabasas, CA 91302	0.25	10,890	4,602	2004	The Oaks	RS
184	2069080003		4131 Prado De Los Caballos, Calabasas, CA 91302	0.33	14,401	6,255	2003	The Oaks	RS
185	2069085027		4140 Prado De La Puma, Calabasas, CA 91302	0.48	20,857	4,602	2003	The Oaks	RS

Developed Residential Ridgeline Properties

186	2069080011		4152 Prado De Los Caballos, Calabasas, CA 91302	0.49	21,305	5,883	2003	The Oaks	RS
187	2069088005		4165 Prado De Los Pajeros, Calabasas, CA 91302	0.37	15,930	5,883	2003	The Oaks	RS
188	2069088004		4177 Prado De Los Pajeros, Calabasas, CA 91302	0.35	15,207	5,271	2003	The Oaks	RS
189	2069088025		4225 Prado De Los Pajeros, Calabasas, CA 91302	0.73	31,943	4,517	2003	The Oaks	RS
190	2069088024		4233 Prado De Los Pajeros, Calabasas, CA 91302	1.02	44,348	5,883	2003	The Oaks	RS
191	2069088026		4270 Prado De Los Ciervos, Calabasas, CA 91302	1.03	44,836	4,755	2002	The Oaks	RS
192	2069088027		4282 Prado De Los Ciervos, Calabasas, CA 91302	0.54	23,575	5,950	2002	The Oaks	RS
193	2069088028		4290 Prado De Los Ciervos, Calabasas, CA 91302	0.58	25,422	5,528	2002	The Oaks	RS
194	2069088029		4298 Prado De Los Ciervos, Calabasas, CA 91302	0.72	31,455	5,440	2002	The Oaks	RS
195	2069066042		23486 Park Colombo, Calabasas, CA 91302	0.09	3,964			Calabasas Ridge	RS
196	2069100047		25460 Prado De Azul, Calabasas, CA, 91302	0.65	28,484	5,149	2006	The Oaks	RS

Undeveloped Ridgeline Properties

#	APN	Map Color	Address	Lot Size (Acres)	Lot Size (Square Feet)	HOA	Zone
1	4455004046		24415 Mulholland Hwy., Calabasas, CA 91302	27.73	1,207,840	NA	HM RR
2	2069090027		25212 Prado Del Grandioso, Calabasas, CA 91302	1.72	74,867	The Oaks	RS
3	2069090051		25300 Prado De La Magia, Calabasas, CA 91303	1.90	82,956	The Oaks	OS-DR RS
4	2069089030		25314 Prado De La Felicidad, Calabasas, CA 91302	1.64	71,221	The Oaks	RS
5	2069089026		25354 Prado De La Felicidad, Calabasas, CA 91302	1.75	76,139	The Oaks	OS-DR RS
6	2072023015		Unassigned	5.05	219,908	NA	HM
7	2072023013		Unassigned	5.06	220,583	NA	HM
8	2072023014		Unassigned	5.06	220,401	NA	HM
9	4455057096		Unassigned	2.04	88,836	NA	RR
10	2080013003		Unassigned	40.26	1,753,926	NA	HM
11	2080013008		Unassigned	40.84	1,778,925	NA	HM
12	2080013001		Unassigned	103.13	4,492,282	NA	HM
13	4455006035		Unassigned	8.33	362,907	NA	RR
14	2072027003		Unassigned	55.84	2,432,177	NA	HM
15	4455004020		Unassigned	10.01	436,162	NA	HM
16	4455001006		Unassigned	77.36	3,370,019	NA	HM
17	4455004032		Unassigned	3.38	147,072	NA	HM RR

Undeveloped Ridgeline Properties

18	4455004025		Unassigned	16.16	704,012	NA	HM RR
19	2069090044		Unassigned	2.02	88,052	The Oaks	RS
20	4455004057		Unassigned	17.56	764,757	NA	HM