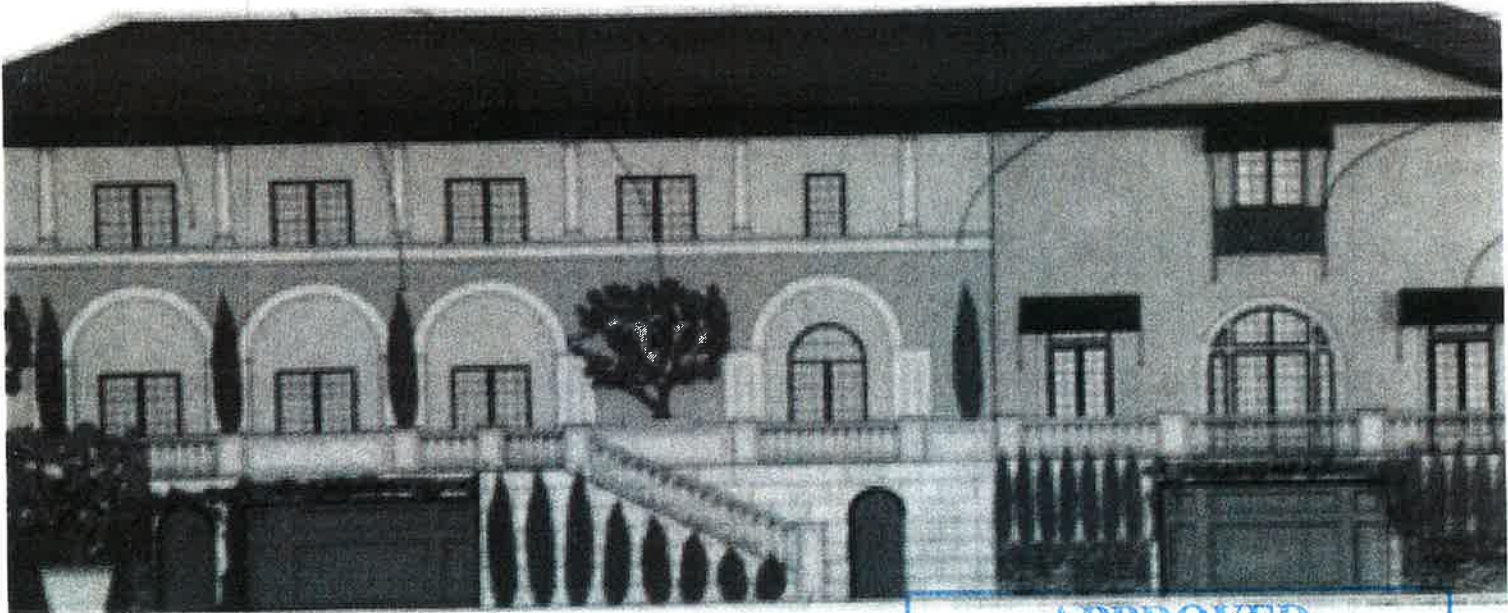


24100 Calabasas Road Calabasas, CA Master Sign Program



APPROVED

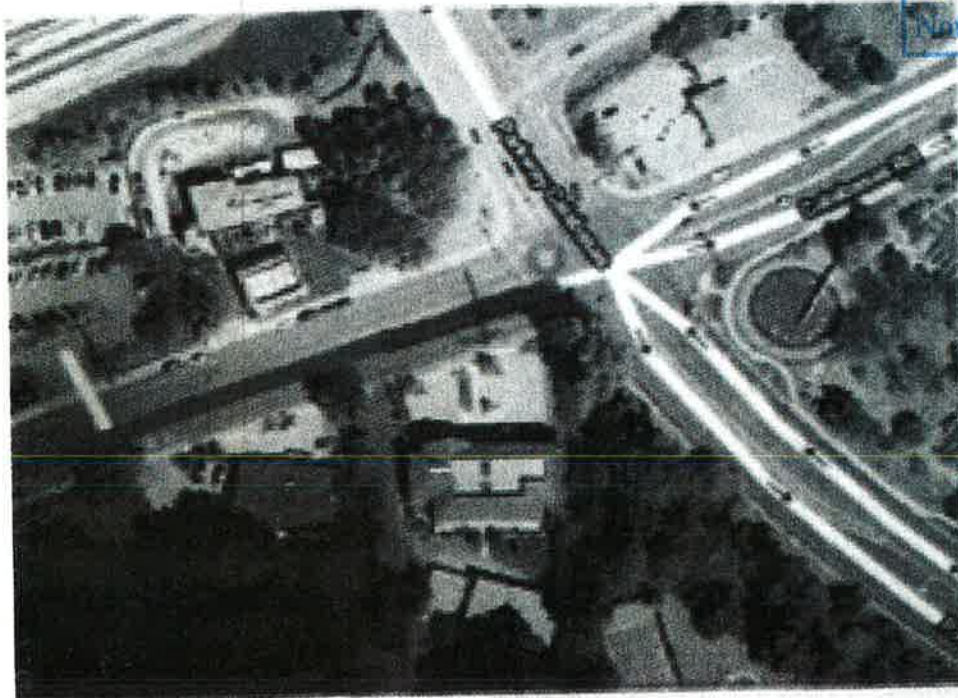
City of Calabasas-Planning Dept.

Date: 9/19/13 File: 120000883

By: Talyn Mirzakhanian

Notes: Approved sign program

per PC Resolution No. 2013-555.



Owners

Gebbia International

24100 Calabasas Rd.

Calabasas, CA 91302

818 932-9696

Andyyanuck@gmail.com

RECEIVED

JUL 16 2013

**COMMUNITY DEVELOPMENT
PLANNING DEPT.**

**Sign Company
Wood Graphics
116N. Street Santa Paula, CA
805 525-0027**

SIGN CRITERIA
GEBBIA INTERNATIONAL

PURPOSE

The purpose of this Master Sign Program is to provide uniform criteria for this office building; and to provide consistent standards for signage for existing and future tenants. These standards will comply with the Uniform Building Code and the City of Calabasas sign code.

APPROVALS

Signs must receive written approval from the Landlord or Landlord's Agent and the City of Calabasas prior to construction and installation. Prior to city submittal, applicants must submit (3) three copies of the following to the Landlord or Landlord's Agent:

1. Dimensioned Site Plan showing locations of proposed signs
2. Scaled Elevation Drawings showing locations of proposed signs, noting height to finished floor
3. Construction Diagrams, showing sizes, section, colors, materials, electrical diagram and method of attachment

SIGN PROGRAM EXCEPTIONS

Exceptions to this Master Sign Program will require written approval from the Landlord, and will require approval of a modification to the sign program by the City of Calabasas' Planning Division.

COMPLIANCE

No Tenants (or their agents) will install or modify any signage not in compliance with this Master Sign Program. Any nonconforming or unapproved signage will be corrected to comply or be removed within (30) thirty days, at the tenant's expense. Conformance will be enforced by Landlord, and City of Calabasas Code Enforcement.

MAINTENANCE

Signs in Gebbia International will be maintained in an "As New" condition. Landlord and Landlord's Agents will periodically inspect conditions. Required maintenance will be necessary under these conditions:

1. Material aging – Fading, cracking, or peeling materials must be replaced or refinished.
2. Illumination – Outage, flickering or dimming illumination must be serviced.
3. Damage – Any signs damaged by persons or natural events must be repaired.

All repairs will be the responsibility of the tenant.

DESIGN CRITERIA

Tenants and sign contractors will use all means to protect tenants and Landlord from liability, in addition to means outlined in submittal drawings and this Program. This includes all methods of installation and repair. Upmost attention to safety is requested and required. All electrical signage must conform to UL standards and be UL listed, and be installed by an appropriately licensed electrical contractor.

DESIGN CRITERIA DETAILS FOR SIGN ON MAIN BUILDING

1. A maximum of one (1) building-mounted sign shall be allowed.
2. Sign Faces will be a minimum .090" thick aluminum, welded to a minimum thickness .040" aluminum return. Corner Joints will be filled and/or sanded smooth.
3. Sign backs of illuminated signs will be a minimum 0.1875" (3/16') clear or white polycarbonate material.
4. Signs will be painted dark bronze with automotive grade polyurethane paint on an appropriate primed surface. Other finish surfaces must be approved by Landlord or Sign Company.
5. Internally Illuminated Signs will comply with Title 24 electrical standards and the City's "Dark Skies Ordinance" (17.27 of the CMC). 12V LED Illumination is recommended; any other lighting type must be approved by Landlord. Internally Illuminated Signs will conform to UL standards, be UL listed, and have requisite UL labels mounted on top of signage out of public view.
6. Mounting Hardware will be insulated from corrosion and exposure to elements, or be made of stainless steel. Dissimilar metals will be separated by paint or nylon washers to prevent galvanic corrosion. Any exposed ferrous metal will be primed with an acid etch primer, and painted with automotive grade paint. Exceptions (for aesthetic purposes) must be approved by Landlord and Sign Company.
7. When a sign is removed, tenant is responsible for patching of any holes in wall, and paint of wall so that it appears in its original condition. Tenant is responsible for terminating electrical service to sign.
8. Any sign left behind by vacating tenant will become property of the Landlord after (30) thirty days.
9. Sign to be installed on the blank portion of the building façade above the exterior staircase, per the direction provided by the City's Architectural Review Panel.

DESIGN CRITERIA DETAILS FOR MONUMENT SIGN

1. All sign lettering will be a minimum .090" thick aluminum, welded to a minimum thickness .040" aluminum return. Corner joints will be filled and/or sanded smooth. All letters to be horizontal lined up with bottom of letters sitting on top of the grout lines.
2. A maximum of four (4) company/tenant names shall be advertised on the monument sign.
3. All signs will be painted dark bronze with automotive grade polyurethane paint on an appropriate primed surface. Other finish surfaces must be approved by Landlord or Sign Company.
4. Mounting Hardware will be insulated from corrosion and exposure to elements, or be made of stainless steel. Dissimilar metals will be separated by paint or nylon washers to prevent galvanic corrosion. Any exposed ferrous metal will be primed with an acid etch primer, and painted with automotive grade paint. Exceptions (for aesthetic purposes) must be approved by Landlord and Sign Company.
5. When a sign is removed, tenant is responsible for patching of any holes in wall, and paint of wall so that it appears in its original condition. Tenant is responsible for terminating electrical service to sign.
6. Any sign left behind by vacating tenant will become property of the Landlord after (30) thirty days.

120"

5.5"

STOCKCROSS

FINANCIAL SERVICES, INC.

RIVAL SPORTS GROUP, LLC

PARK WILSHIRE INSURANCE, INC



42"

4"

4"

4"

All letters to be on the horizontal grout lines

1/4" THICK dark bronze

City:	
Phone:	
State/ZIP:	
Fax:	

Job No.:		Date:	July 15, 2013
Order Date:			
Bill Dimensions:		Estimate:	
Comments:			

Monument

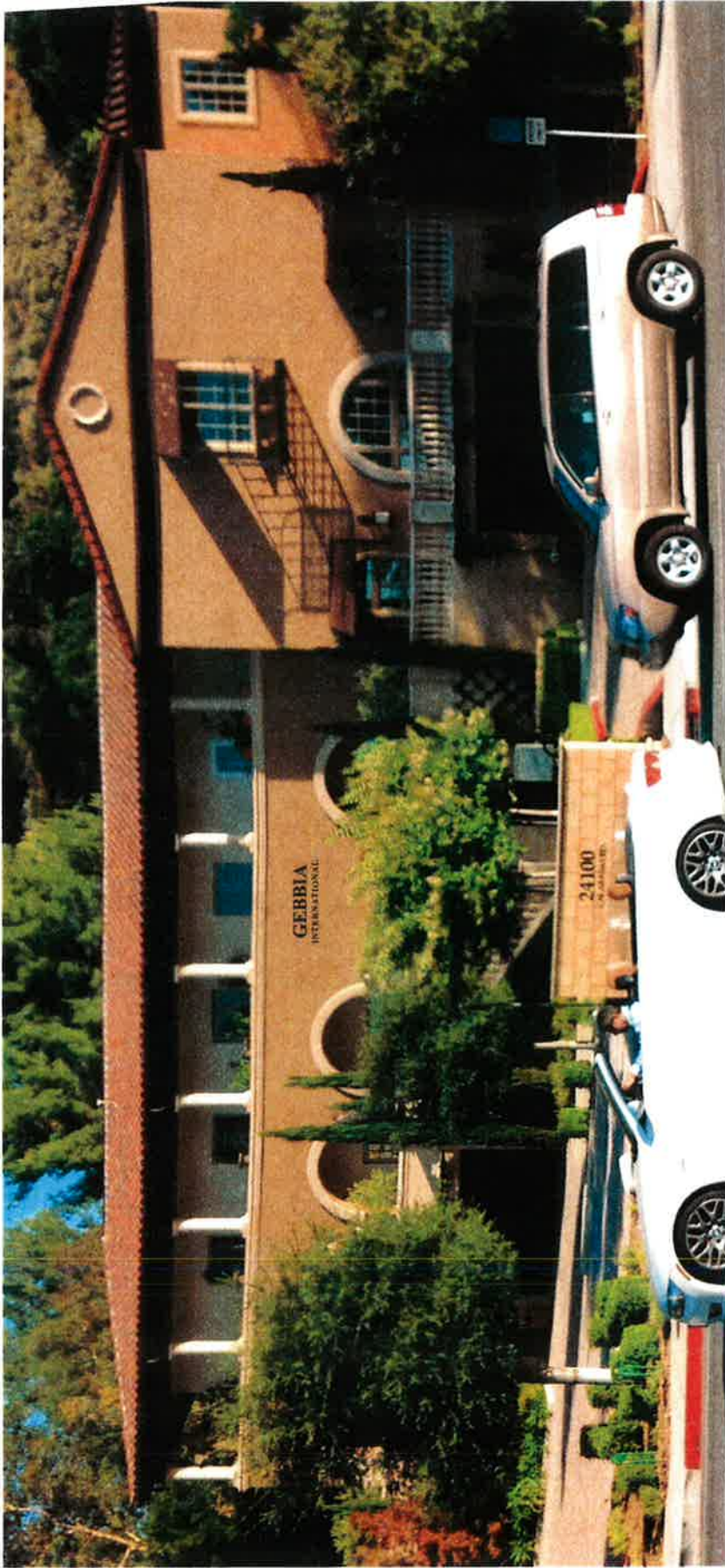
Job No.:	Date:
Order Date:	July 15, 2013
Sign Dimensions:	Causes:
Comments:	

Monument

City:
Phone:
Fax:
State/ZIP:



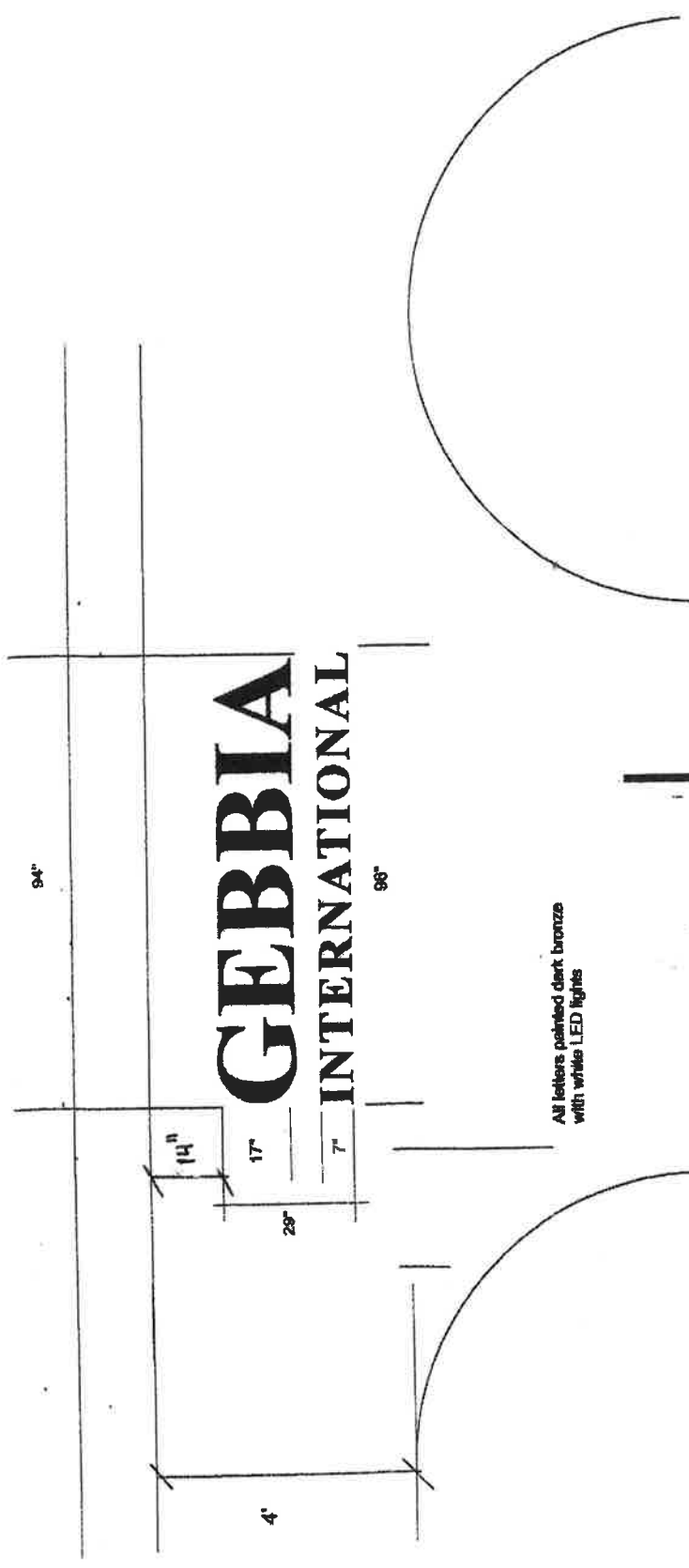
All letters to be on the horizontal grout lines



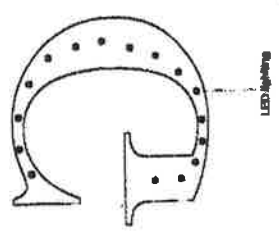
Job No.:	Date:	July 16, 2013
Order Date:	Salesperson:	
Sign Dimensions:	Estimate:	
Comments:		

Wall Sign

Customer:	Andy Yanuck
Company:	Gebbia International
Address:	24100 Calabasas Rd.
City:	Calabasas, Ca 91302
Phone:	818 932-9696
Fax:	Andyyanuck@gmail.com



All letters painted dark bronze with white LED lights



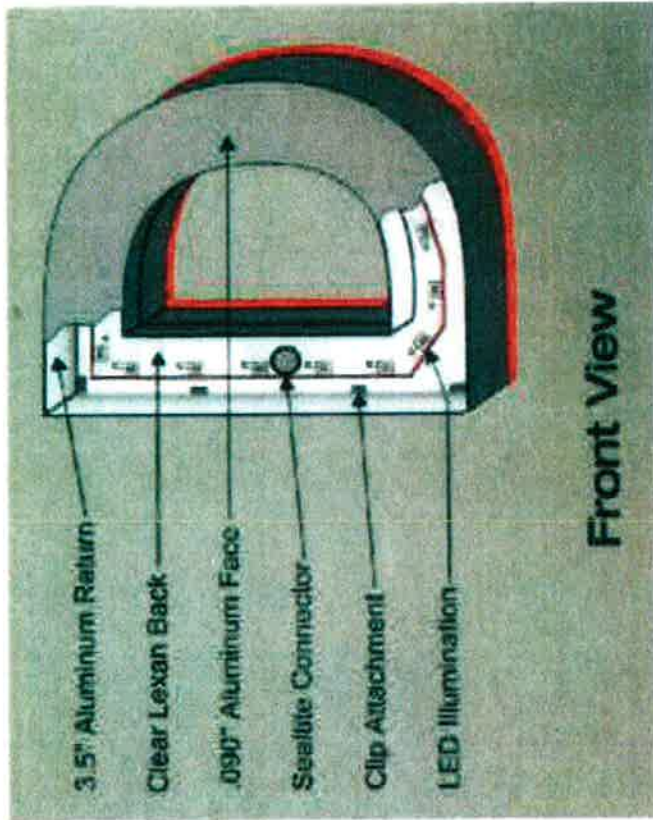
1/4" detail with silicone adhesive

Wall Letters detail

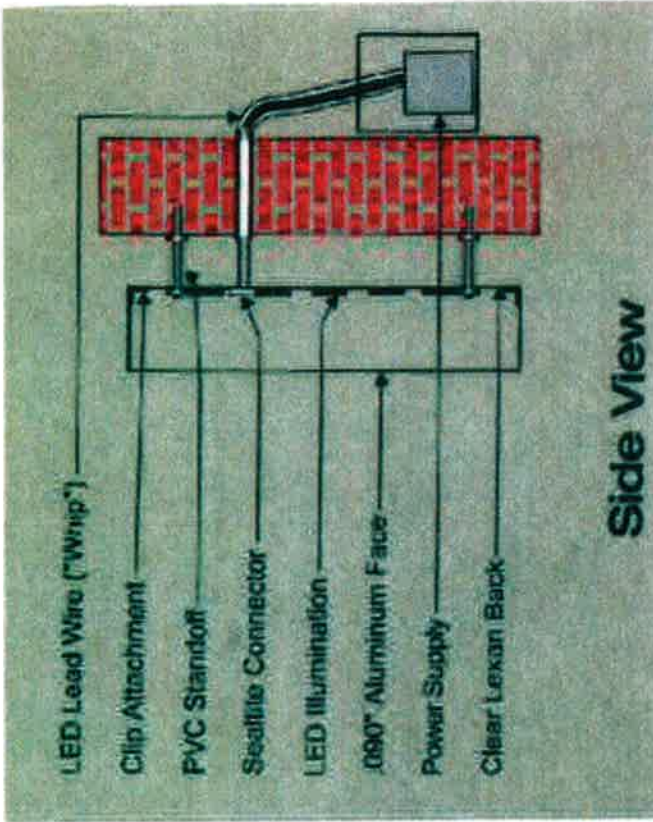
City:	
Phone:	
Fax:	
State/Zip:	

Link No. 1	Drawn	Mar 5, 2013
Order #3888		
High Components		
Comments:		

Wall / Studio



Front View



Side View

Customer	Andy Yansub
Company	Quiblic International
Address	24100 Calabasas Rd.
City	Calabasas, CA 91302
Phone	818 813-9999
E-mail	andy@quiblic.com

Job No.	0705	July 29, 2013
Order Ref#	040999003	
Sign Extension		Billions
Comments		

LED Letters