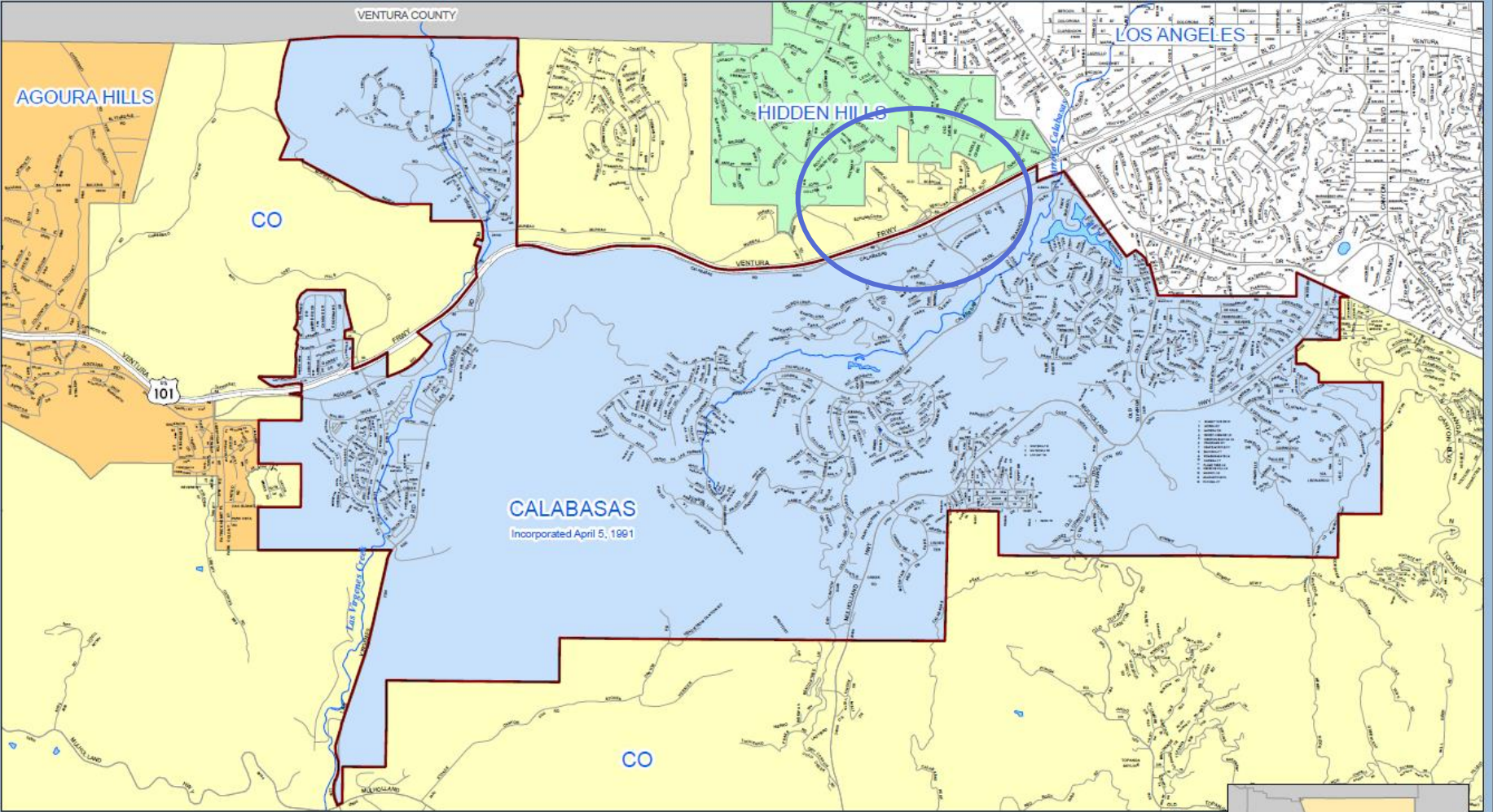


Craftsman's Corner Potential Future Annexation



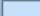

CITY *of* CALABASAS

July 15, 2013



Calabasas Sphere of Influence

Legend

-  City of Calabasas
-  Calabasas Sphere of Influence, Coterminous

Sphere of Influence History

Action	Effective Date
Established	07-08-92
Reconfirmed	08-25-04
Reconfirmed	10-10-12

1 in = 1 miles



Revised: November 29, 2012

C:\GIS\PROJECTS\TRANS\DRAMA\



Community Outreach Meeting
Craftsman's Corner Discussion

July 15, 2013

City of Hidden Hills

Craftsman's Corner

City of Calabasas

© 2013 Eagle Aerial, County Appraiser, TeleMaps, Customer Data, Digital Map Products



Community Outreach Meeting
Craftsman's Corner Discussion

July 15, 2013

Why Annex to Calabasas?

- The area already functions effectively as a part of Calabasas
 - By name
 - Access / roadways
 - Shopping
 - Use of city services (e.g., parks & library)
- But the area is left out politically



Community Outreach Meeting

Craftsman's Corner Discussion

July 15, 2013

Calabasas 2030 General Plan Supports Annexation

II-1: Work with residents and landowners of adjacent unincorporated areas contemplated for annexation to determine interest.

II-3: Pursue annexation of areas where residents and landowners desire to become part of the City of Calabasas.

II-4: Specifically pursue annexation of the Craftsman's Corner area.

IX-29: Annex and revitalize Craftsman's Corner through redevelopment with a mix of uses, improvement of circulation, and raising the quality of building design.



Community Outreach Meeting

Craftsman's Corner Discussion

July 15, 2013

Annexations are governed by State law

- The Cortese-Knox-Hertzberg Local Gov. Reorganization Act of 2000
- Intent of the Act is to encourage logical urban boundaries, and orderly and efficient provision of municipal services (water, sewer, streets, fire protection, etc.).
- Governs municipal annexations & boundary adjustments, incorporations, special district boundaries, etc.
- Establishes County LAFCOs as independent agencies to oversee process and to render decisions.



Community Outreach Meeting

Craftsman's Corner Discussion

July 15, 2013

HIDDEN HILLS

Incorporated October 19, 1981

Annexation
Area

CALABASAS



Community Outreach Meeting

Craftsman's Corner Discussion

July 15, 2013

If We Annex, What Will Change?

- First of all, your property taxes will not change.
- Address &/or post office will not change either.
- You will be able to vote in Calabasas elections, and you will be able to participate in city affairs (commissions, boards, etc.)
- Police & fire protection will remain with L. A. County Sheriff and L. A. County Fire Dept. (no change)



If We Annex, What Will Change?

- Trash & curbside recycling will transition to City of Calabasas service provider (no service disruption)
- You will become more informed about Calabasas events, programs and activities because your HOA will receive city's HOA notices & mailings, reverse-911 service, etc.
- Your local government will suddenly be accessible and responsive to your needs because it is right next door!



Community Outreach Meeting

Craftsman's Corner Discussion

July 15, 2013

What's Involved?

LAFCO would process a reorganization application involving LA County, City of Calabasas, and City of Hidden Hills; and which will include the following actions:

1. Amendments to Spheres of Influence (basically the future growth boundaries) for both the City of Calabasas and the City of Hidden Hills
2. Annexation of the territory to City of Calabasas (85 parcels and approx. 145 acres)
3. Annexation of four parcels to City of Hidden Hills (approx. 14 acres)



Community Outreach Meeting

Craftsman's Corner Discussion

July 15, 2013

Process Overview

- City conducts informational community outreach meetings with residents & property owners
- Consult with LA County officials, and Hidden Hills officials
- Initiate Council Resolution of Annexation
- Prepare formal application and submit to LAFCO
- Pre-zone the area consistent with 2030 General Plan and existing land uses
- Develop service transition plans
- LAFCO public hearing process begins (see chart, next)



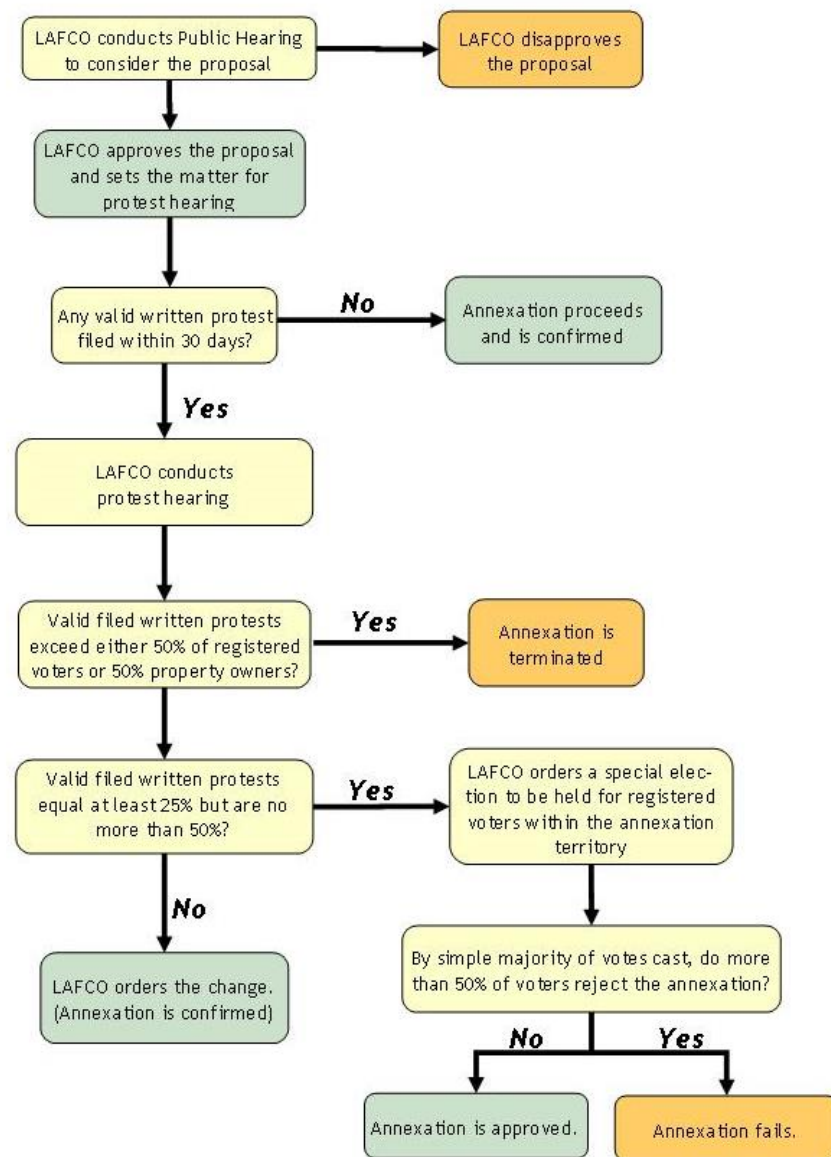
Community Outreach Meeting

Craftsman's Corner Discussion

July 15, 2013

LAFCO Review & Public Hearing Process

The bottom line is that annexation may be accomplished only when a majority of the land owners and voters support it.



Who will pay for the Annexation?

The City of Calabasas will pay all costs and there will be no cost to area residents and property owners.



We welcome your
questions.



Community Outreach Meeting
Craftsman's Corner Discussion

July 15, 2013