

Exhibit A: Sign Plans



Non illuminated channel letters - Front elevation

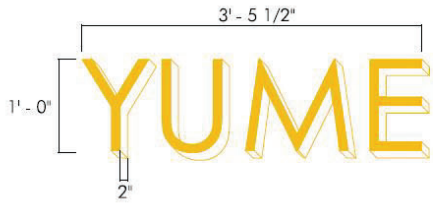
This rendering and design is the property of Signtopia and its use is restricted to the original project for which it was prepared. Any reproduction, publication or reuse by any method, in whole or in part, by others is prohibited without the written consent of Signtopia and is a violation of the law and is subject to legal recourse. Important note regarding digital colors shown: The colors represented on the layouts / drawings are only representations and may vary from the finished products. For actual samples of any displayed color or combination thereof, please contact your sales representative.

Client Approval:
 as submitted as noted resubmit
 By: _____ Date: _____

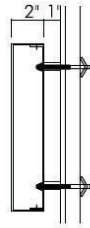
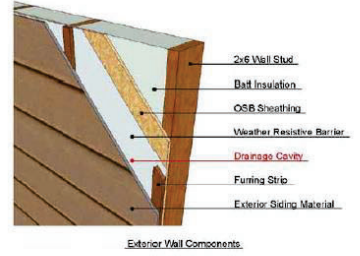
Project: Yumi Sushi
 Ref: Exterior wall sign - Non illuminated
 Address: 23536 Calabasas Rd, Calabasas, CA 91302

SIGNTOPIA value beams with quality.
 10741 Sherman Way #7 Sun Valley, CA 91352
 Phone: 818-785-4000 www.thesigntopia.com

Schematic #1.0
 Drawn by: Charlie Date: 09/25/24
 Revision Date: 09/25/24



- * Non-Illuminated channel letters face and return gold color painting with satin clear coating
- * Material - #18GA stainless steel & 22GA x 2" stainless steel return
- * Back - 3/16" Clear polycarbonate
- * 1" Aluminum spacer back



- * #6 x 3/4" stainless steel screw color match channel letter return color
- * 1" aluminum spacer with 1/4" x 4" toggle bolt

Non_illuminated channel letters - Detail & side view

This rendering and design is the property of Signtopia and its use is restricted to the original project for which it was prepared. Any reproduction, publication or reuse by any method, in whole or in part, by others is prohibited without the written consent of Signtopia and is a violation of the law and is subject to legal recourse. Important note regarding digital colors shown: The colors represented on the layouts/drawings are only representations and may vary from the finished products. For actual samples of any displayed color or combination thereof, please contact your sales representative.

Client Approval:
 as submitted as noted resubmit
 By: _____ Date: _____

Project : Yumi Sushi
 Ref : Exterior wall sign - Non Illuminated
 Address: 23536 Calabasas Rd.
 Calabasas, CA 91302

SIGNTOPIA value beams with quality.
 10741 Sherman Way #7 Sun Valley, CA 91352
 Phone : 818-765-4000 www.thesigntopia.com

Schematic #2.0
 Drawn by: Charlie Date: 09/25/24
 Revision Date: 09/25/24