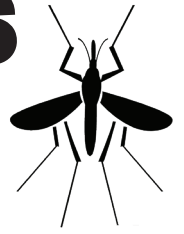




WEST NILE VIRUS ADVISORY



**West Nile virus has been found
in every county of California,
including Los Angeles County**

**This disease is transmitted to humans and
horses by the bite of an infected mosquito**

FOLLOW THESE PRECAUTIONS

- **Avoid outdoor activity** between dusk and dawn when mosquitoes may be most active
- **Apply** mosquito repellent containing EPA-registered active ingredients (DEET, picaridin, oil of lemon eucalyptus, or IR3535) when outside
- **Dress** in long sleeves and pants while outdoors
- **Mosquito-proof your home** with tight-fitting screens on doors and windows
- **Eliminate standing water** around your property

For Further Information Contact:

Los Angeles County West Vector Control District
6750 Centinela Avenue
Culver City, CA 90230
www.lawestvector.org
(310) 915-7370

