



***City of Calabasas  
Presentation on Policies and Procedures for Landscape  
Management***

***October 25, 2023***

***Dan Bergmann, P.E.  
IGService  
dan@igservice.com***

# Landscape Management Areas

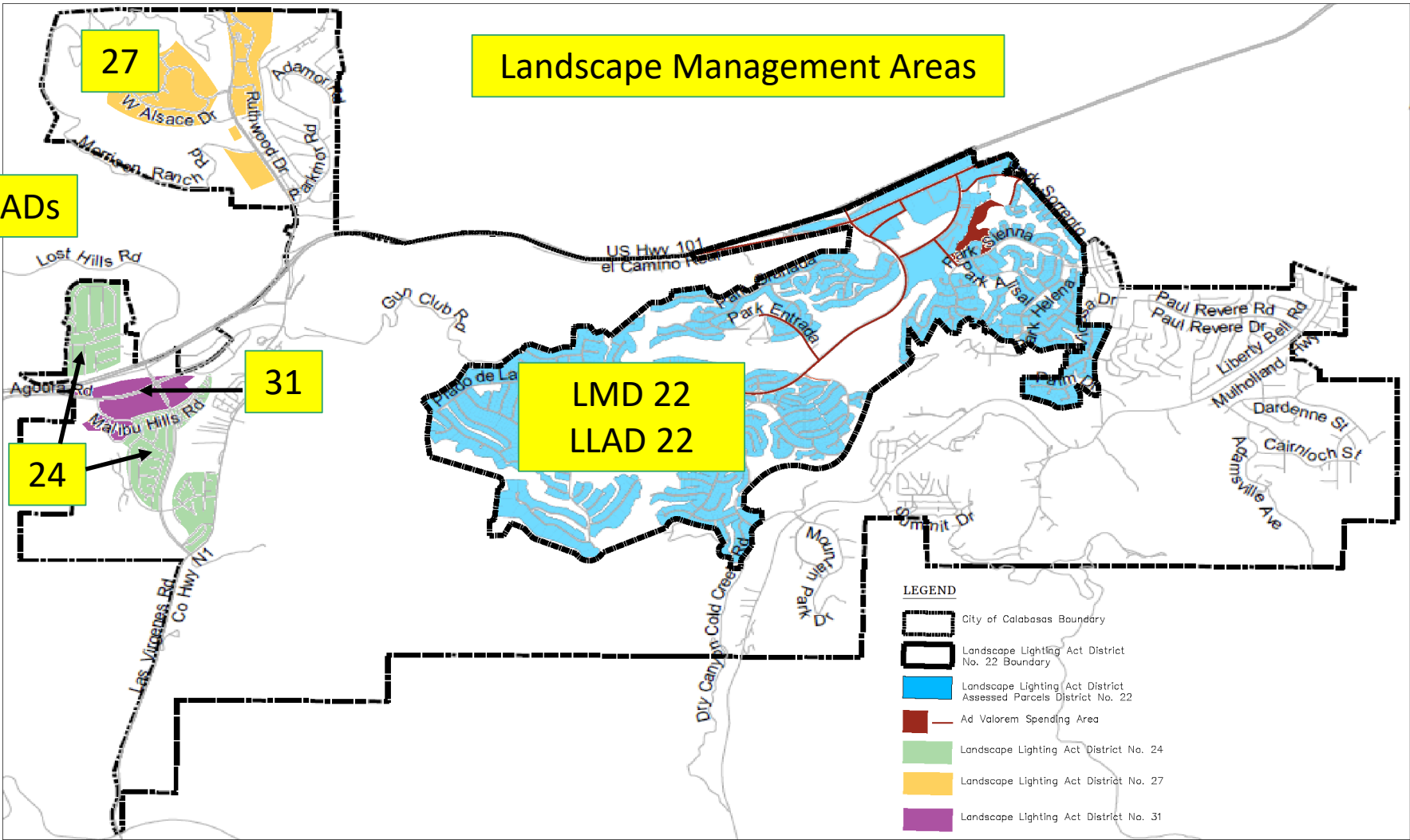
LLADs

27

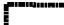






31

24

LMD 22  
LLAD 22



**LEGEND**

-  City of Calabasas Boundary
-  Landscape Lighting Act District No. 22 Boundary
-  Landscape Lighting Act District Assessed Parcels District No. 22
-  Ad Valorem Spending Area
-  Landscape Lighting Act District No. 24
-  Landscape Lighting Act District No. 27
-  Landscape Lighting Act District No. 31

# Timeline

<u>Year</u>	<u>Establishment of:</u>
1911	"The Improvement Act of 1911"
-	
<b>1968</b>	<b>LMD 22 (Ad Valorem)</b>
-	
1972	"Landscape and Lighting Act"
-	
1978	Proposition 13 limits property tax to 1%
1979	LLAD 22
-	
1984	LLAD 24 and 27
-	
1989	LLAD 32
-	
1991	Calabasas Incorporated
-	
1995	LMD 22 & LLADs transferred to city

# LMD 22 vs the LLADs

---

LMD 22 Ad Valorem

vs.

LLAD Assessment District

1911 Improvement Act

1972 LLAD Law

Within 1% General Tax Levy

Beyond 1% General Tax Levy

Changes with property value

Changes with inflation index

One LMD 22 area (*Fund 21*)

Four LLAD areas (22, 24, 27, 32)

Four Common Benefit Zones

40 Zones

Property owners don't decide

Property owners decide

# LMD 22 “Ad Valorem” Tax

---

- The LMD 22 portion is approximately 0.04% of the 1% General Tax: “Four cents of every dollar”
- LMD 22 revenue approximately \$2.5M/yr
- LMD 22 fund balance approximately \$8M

## DETAIL OF TAXES DUE FOR

2068 021 010 22 000 94

AGENCY	AGENCY PHONE NO.	RATE	AMOUNT
GENERAL TAX LEVY ALL AGENCIES		1.000000	\$ 8,727.89
VOTED INDEBTEDNESS			
METRO WATER DIST		.003500	\$ 30.55
COMMNTY COLLEGE		.024882	217.16
UNIFIED SCHOOLS		.063625	555.31
DIRECT ASSESSMENTS			
CALABASAS ST LT LAND/LIGHT #22	(626) 300-4891 (800) 755-6864		\$ 28.00 1,032.59
CONSLDATED SEWER	(626) 300-3340		50.50
SAFE CLEAN WATER	(833) 275-7297		72.53
FLOOD CONTROL	(626) 979-5498		57.70
LAS VIRGENES WTR	(866) 427-4304		10.00
LVUSD MEASURE E	(800) 273-5167		98.00
LA WEST MOSQ AB	(310) 915-7370		14.65
RPOSD MEASURE A	(833) 265-2600		47.68
MWD STANDBY #1	(866) 807-6864		8.02
LA CO FIRE DEPT TRAUMA/EMERG SRV	(323) 881-6151 (866) 587-2862		73.68 140.25

Agency	Original County Description	Basic Rate
001.05	Los Angeles County	0.2563906
001.20	LA County Accum. Cap. Outlay	0.0001109
007.30	Los Angeles Consolidated Fire District	0.1705127
007.31	LA County Fire FFW	0.0063321
023.81	County Lighting District Calabasas	0.0032000
030.10	LA County Flood DR. IMP. District Maint.	0.0016611
030.70	LA County Flood Control Maint.	0.0094005
061.10	LA County West Vector Control Dist.	0.0002343
068.22	RCD of the Santa Monica Mountains	0.0007293
126.01	Tax District #1	0.0471857
126.21	City of Calabasas Library Fund 28	0.0225591
<b>126.22</b>	<b>Landscape Maintenance #22</b>	<b>0.0438973</b>
363.05	Las Virgenes Muni. Water Dist.	0.0006758
363.51	Las Virgenes Muni. Water Dist. - IMP.D.U-2	0.0004943
400.00	Educational Rev. Augmentation Fund	0.0695424
400.01	Educational Aug. Fund Impound	0.1329720
400.15	County School Services	0.0013754
400.21	Childrens Instil. Tuition Fund	0.0027296
805.04	LA City Community College District	0.0293510
805.20	LA Community College Children's Center Fund	0.0003035
881.03	Las Virgenes Unified School District	0.1930918
881.06	County School Service Fund- Las Virgenes	0.0072507
<b>Total</b>		<b>1.0000000</b>