

Proposal for  
City of Calabasas

Prepared by



10-12-2023  
Job # 110624-01

Freedom Park Playground Option 1



435-760-5103 | [www.gwpark.com](http://www.gwpark.com)



Great Western Installations, Inc  
 975 S. State Hwy 89  
 Logan, UT 84321  
 Cell: 435-760-5103  
 Office: 435-245-5055  
 Fax: 435-245-5057  
 tyler@gwpark.com  
 www.gwpark.com

10/12/2023  
 Quote #  
 110624-01-01

## Freedom Park Playground Option 1

City of Calabasas  
 Attn: Erica Green  
 100 Civic Center Way  
 Calabasas, CA 91302  
 egreen@cityofcalabasas.com

Ship to Zip 91302

Quantity	Part #	Description	Unit Price	Amount
1	RDU	GameTime - Custom 5-12 Playground - <ul style="list-style-type: none"><li>• Drawing Reference #110624-01-Opt 1</li></ul>	\$96,874.00	\$96,874.00
1	5179	GameTime - Welcome Sign (5-12)	\$713.00	\$713.00
1	INSTALL	TJ Janca - Site Work- <ul style="list-style-type: none"><li>• Demo and remove existing playground footings.</li><li>• Demo and remove existing 1,323 of existing sand at 7.5" depth (city will move table and trash sitting on top of sand, no footing in those items).</li><li>• Demo and remove 193 sf of existing rubber and concrete base to 7.5" depth</li><li>• Provide and install 165 lf of MOW curb</li><li>• Provide and install 1,516 sf of compacted base at 4" depth, 90% compaction.</li><li>• Provide/install temp fencing around playground area for 160'LF (windscreen and sand bags not included)</li><li>• Remove and dispose spoils.</li><li>• Prevailing wages.</li><li>• Price includes one (1) move-on only.</li></ul>	\$24,967.00	\$24,967.00
1	INSTALL	TJ Janca - Playground Equipment-Opt1- <ul style="list-style-type: none"><li>• Installation only of (1) Gametime Structure #110624-01-Opt1</li><li>• Footings excavation, and concrete.</li><li>• Equipment assembly.</li><li>• Removal of spoils.</li><li>• Prevailing wages.</li><li>• Price includes one (1) move-on only.</li></ul>	\$29,894.00	\$29,894.00
1	INSTALL	TJ Janca - Surfacing-Standard 50/50- <ul style="list-style-type: none"><li>• Install approximately 1,516 sq. ft. of 3½" Pro-Tect Turf™</li><li>• 50% black, 50% standard color wear course.</li><li>• Standard colors (Blue, Green, Beige, Red).</li><li>• Use of California recycled tires.</li><li>• Use of aromatic binder.</li><li>• Prevailing wages.</li><li>• Removal of our construction debris.</li><li>• Price includes one (1) move-on only.</li><li>• Standard two-year warranty.</li></ul>	\$26,980.00	\$26,980.00
1	Permits	Other Products 1 - Stamped Plans/Calcs and Permit Fees	\$7,300.00	\$7,300.00
1	P&P	Payment and Performance Bond - Payment and Performance Bond	\$3,650.00	\$3,650.00
			<b>Sub Total</b>	<b>\$190,378.00</b>
			<b>Discount</b>	<b>(\$29,778.32)</b>
			<b>Freight</b>	<b>\$7,933.09</b>
			<b>Tax</b>	<b>\$6,441.82</b>
			<b>Total</b>	<b>\$174,974.59</b>



Great Western Installations, Inc  
975 S. State Hwy 89  
Logan, UT 84321  
Cell: 435-760-5103  
Office: 435-245-5055  
Fax: 435-245-5057  
tyler@gwpark.com  
www.gwpark.com

10/12/2023  
Quote #  
110624-01-01

## Freedom Park Playground Option 1

### Comments

Your Sales Rep is Tyler Kyriopoulos. Please reach out to Tyler at 435-760-5103 if you should have any questions regarding this quote.

Due to the volatility of freight costs, the freight pricing is subject to change at the time of order.

Pricing is subject to change. Request updated pricing when purchasing from quotes more than 30 days old.

Shipping to Site Address:  
4041 Balcony Dr.  
Calabasas, CA 91302

\*Freight charges are based on listed zip code and are subject to change if shipping information changes.

\*Deposit may be required.

Customer is responsible for offloading.

Prevailing Wages

DIR #1000028191 CSLB #929912 B & C61/D34

### TERMS & CONDITIONS:

#### Remittance Address:

975 S. Hwy 89  
Logan, UT 84321

- **PRICING:** Pricing is subject to change. Request updated pricing when purchasing from quotes more than 30 days old.
- **PAYMENT TERMS:** Net 30 days subject to approval by Credit Manager. A signed P.O. made out to Great Western Recreation or this signed quotation is required for all orders unless otherwise noted. Equipment shall be invoiced separately from other services and shall be payable in advance of those services and project completion. Checks should be made payable to Great Western unless otherwise directed.
- **FINANCE CHARGE:** A 1.5% monthly finance charge (or as permitted by law) will be added to invoices over 30 days past due.
- **TAXES:** Taxes will be shown as a separate line item when included. Any applicable taxes not shown will be added to final invoice. A copy of your tax exemption certificate must be submitted at time of order or taxes will be added to your invoice.
- **MINIMUM ORDER:** Our minimum order is \$50 (USD) Any order less than \$5000 requires cash with order or payment by major credit card.
- **SHIPMENT:** Multiple shipments may be required based on point of origin. Above costs assume one shipment for each vendor quoted.
- **DELIVERY:** It is the responsibility of the owner to offload and inventory equipment, unless other arrangements have been made. Missing or damaged equipment must be reported within 60 days of acceptance of delivery.

### INSTALLATION CONDITIONS:

- **ACCESS:** Site should be clear, level and allow for unrestricted access of trucks and machinery.
- **STORAGE:** Customer is responsible for providing a secure location to off-load and store the equipment during the installation process. Once equipment has delivered to the site, the owner is responsible should theft or vandalism occur unless other arrangements are made and noted on the quotation.
- **FOOTER EXCAVATION:** Installation pricing is based on footer excavation through earth/soil only. Customer shall be responsible for unknown conditions such as buried utilities (public & private), tree stumps, rock, or any concealed materials or conditions that may result in additional labor or materials cost.
- **UTILITIES:** Owner is responsible for locating any private utilities.
- **ADDITIONAL COSTS:** Pricing is based on a single mobilization for installation unless otherwise noted. Price includes ONLY what is stated in this quotation. If additional site work or specialized equipment is required, pricing is subject to change.



Great Western Installations, Inc  
975 S. State Hwy 89  
Logan, UT 84321  
Cell: 435-760-5103  
Office: 435-245-5055  
Fax: 435-245-5057  
tyler@gwpa.com  
www.gwpa.com

10/12/2023  
Quote #  
110624-01-01

## Freedom Park Playground Option 1

### ACCEPTANCE OF QUOTATION:

Acceptance of this proposal indicates your agreement to the terms and conditions stated herein.

Purchase Amount: **\$174,974.59**

Date: \_\_\_\_\_

\_\_\_\_\_  
Signature

Please fill out this [ORDER FORM](#), this is required to process the order.

**Freedom Park Playground, Project 110624-01-Opt 1  
Calabasas, CA**



**A STRONG FOUNDATION IN PLAY FOR OVER 50 YEARS**

**P: (435) 245-5055 / F: 435 245-5057 [Tyler@gwpark.com](mailto:Tyler@gwpark.com)**



**Freedom Park Playground, Project 110624-01-Opt 1  
Calabasas, CA**



**A STRONG FOUNDATION IN PLAY FOR OVER 50 YEARS**

**P: (435) 245-5055 / F: 435 245-5057 [Tyler@gwpark.com](mailto:Tyler@gwpark.com)**



**Freedom Park Playground, Project 110624-01-Opt 1  
Calabasas, CA**

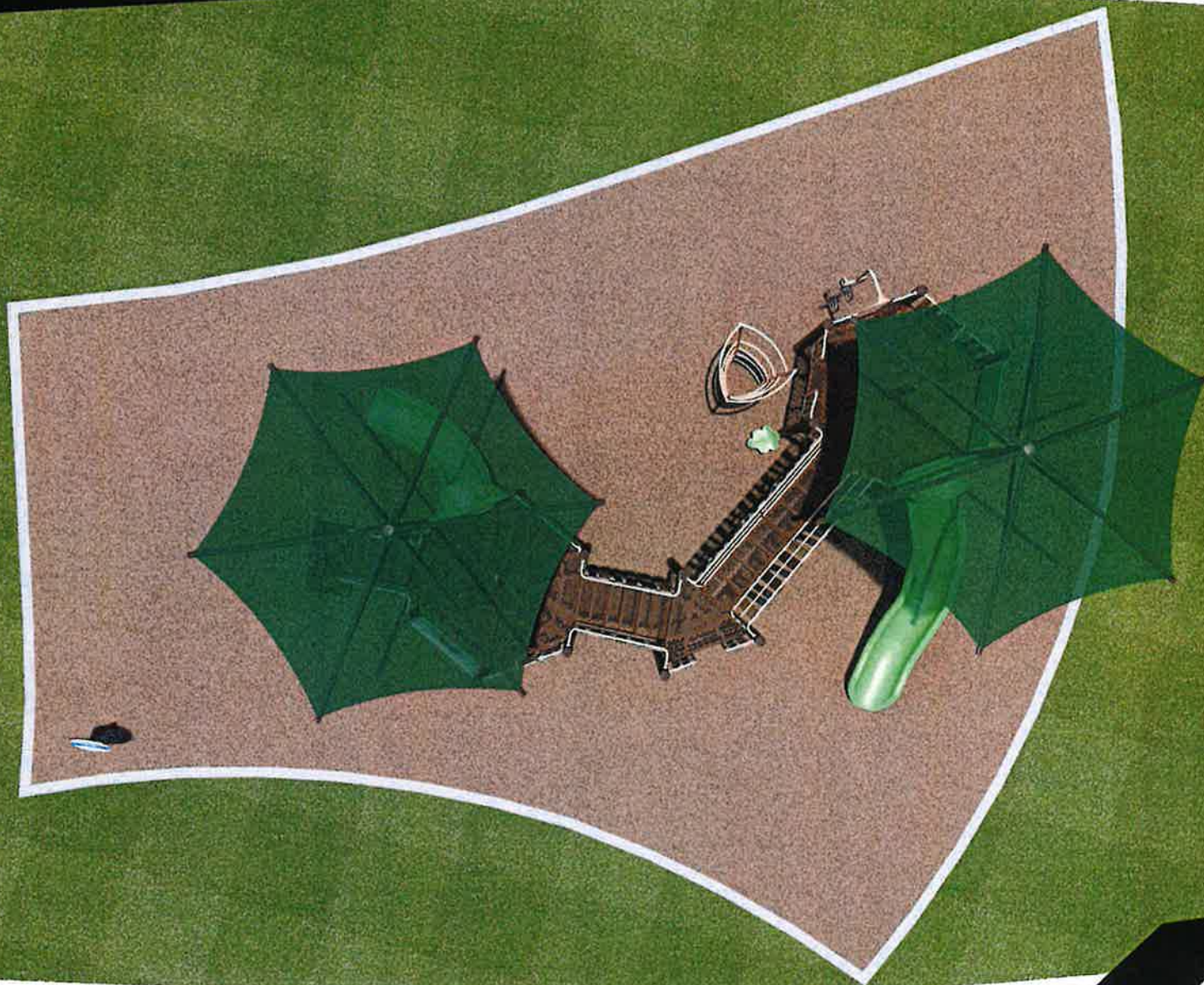


**A STRONG FOUNDATION IN PLAY FOR OVER 50 YEARS**

**P: (435) 245-5055 / F: 435 245-5057 Tyler@gwpark.com**



**Freedom Park Playground, Project 110624-01-Opt 1  
Calabasas, CA**



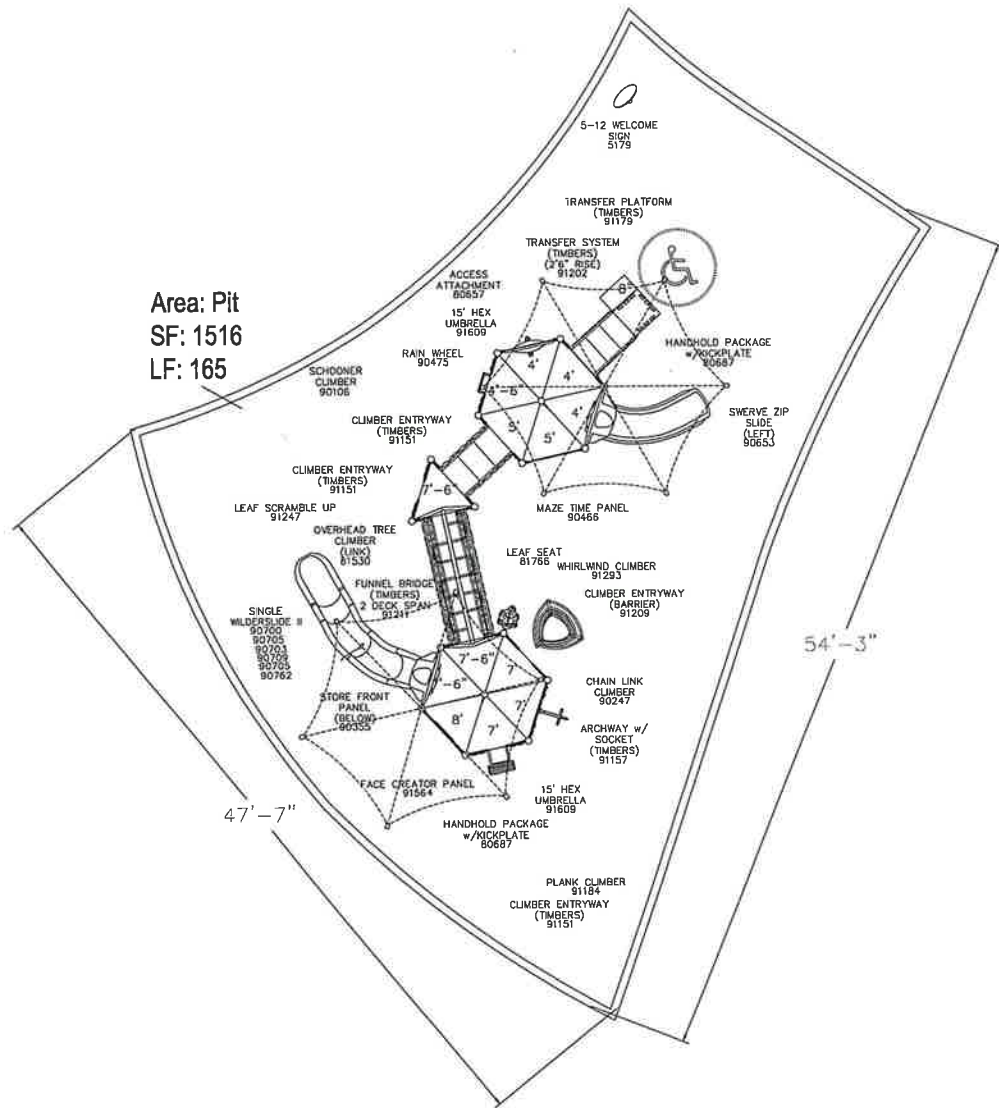
**A STRONG FOUNDATION IN PLAY FOR OVER 50 YEARS**

**P: (435) 245-5055 / F: 435 245-5057 [Tyler@gwpark.com](mailto:Tyler@gwpark.com)**



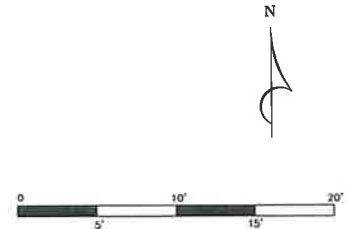


Area: Pit  
SF: 1516  
LF: 165



54'-3"

47'-7"



City of Calabasas  
Freedom Park  
Calabasas, CA  
Representative  
Great Western Recreation

SALES REP  
TYLER KYRIOPOULOS  
435-760-5103  
TYLER@GWPARK.COM

Total Elevated Play Components	10	-	Required	-
Total Elevated Play Components Accessible By Ramp	10	Required	5	
Total Elevated Components Accessible By Transfer	3	Required	3	
Total Accessible Ground Level Components Shown	3	Required	3	
Total Different Types Of Ground Level Components	3	Required	3	

This play equipment is recommended for children ages 5 - 12

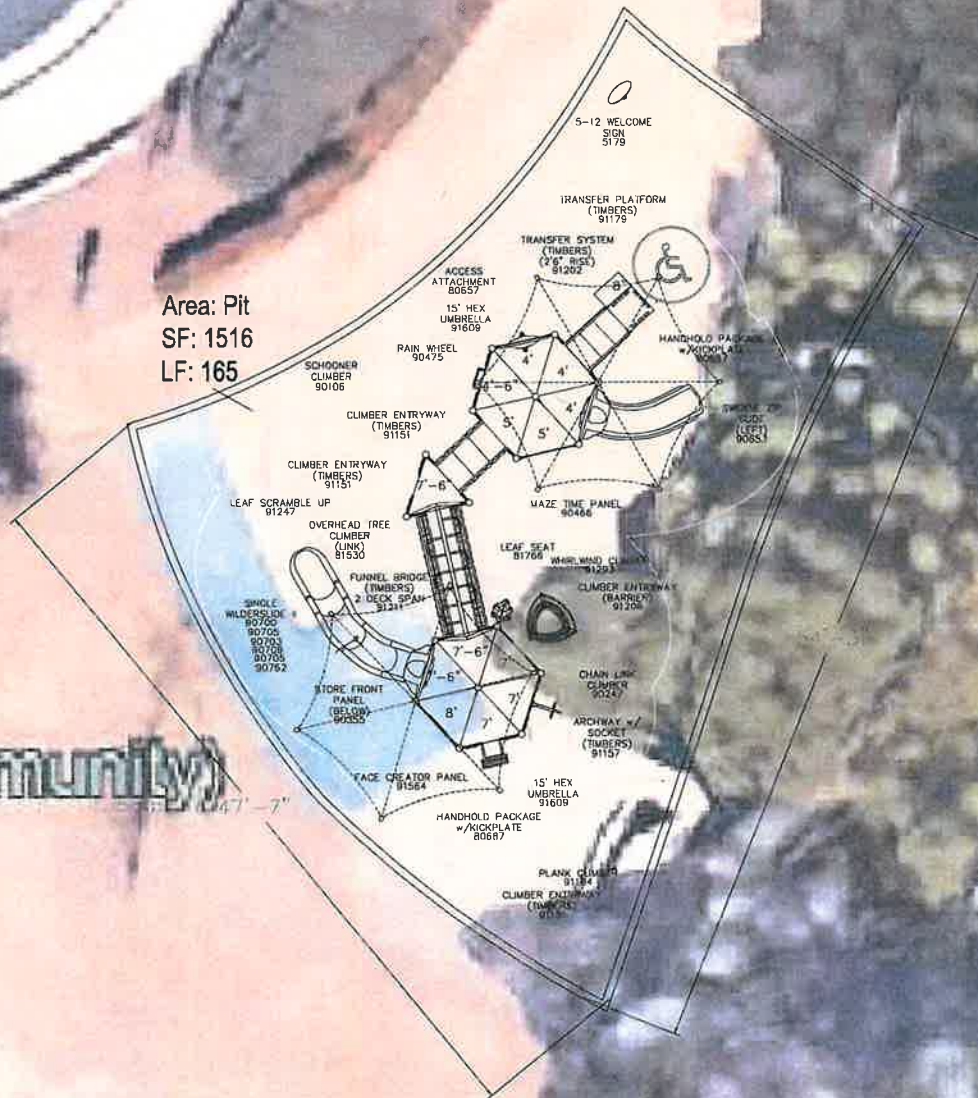
Minimum Area Required:  
-  
Scale: -  
This drawing can be scaled only when in an 18" x 24" format

**IMPORTANT:** Soft resilient surfacing should be placed in the use zones of all equipment, as specified for each type of equipment, and at depths to meet the critical fall heights as specified by the U.S. consumer Product Safety Commission, ASTM standard F 1487 and Canadian Standard CAN/CSA-Z-614

Drawn By:  
BW  
Date:  
10/9/23  
Drawing Name:  
110624-01-Opt 1

ated Community

Area: Pit  
SF: 1516  
LF: 165



City of Calabasas  
Freedom Park  
Calabasas, CA  
Representative  
Great Western Recreation

SALES REP  
TYLER KYRIOPOULOS  
435-760-5103  
TYLER@GWPARK.COM

Total Elevated Play Components	10	Required	10
Total Elevated Play Components Accessible By Ramp	10	Required	6
Total Elevated Components Accessible By Transfer	10	Required	6
Total Accessible Ground Level Components Shows	3	Required	3
Total Different Types Of Ground Level Components	3	Required	3

This play equipment is recommended for children ages 5 - 12

Minimum Area Required:  
Scale: -  
This drawing can be scaled only when in an 18" x 24" format

IMPORTANT: Soft resilient surfacing should be placed in the use zones of all equipment, as specified for each type of equipment, and at depths to meet the critical fall heights as specified by the U.S. consumer Product Safety Commission ASTM standard F 1487 and Canadian Standard CANCSA-Z-614

Drawn By:  
BW  
Date:  
10/9/23  
Drawing Name:  
110624-01-Opt 1



## IPEMA ASTM F1487-21 CERTIFICATE OF COMPLIANCE

**ISSUE DATE: October 13, 2023**

**Requested By: Berkley**

**Project: Freedom Park Opt 1**

In the interest of public playground safety, IPEMA provides a third-party certification service whereby TÜV SÜD America validates a manufacturer's certification of conformance to the ASTM F1487-21 (excluding sections 7.1.1, 10, 11.2, 11.3, 13.1.1, 13.1.2, 13.2, and 13.3) Standard Consumer Safety Performance Specification for Playground Equipment for Public Use.

The manufacturer listed below has received written validation from TÜV SÜD America that the product(s) listed conform with the requirements of ASTM F1487-21 (excluding sections 7.1.1, 10, 11.2, 11.3, 13.1.1, 13.1.2, 13.2, and 13.3).

This certificate is invalid if any component or part is replaced, unless purchased from the original manufacturer and assembled in accordance with the original equipment manufacturer's instructions. Check with the manufacturer to determine the validity of the certification of the product(s) listed prior to using this certificate for proof of certification.

MODEL #	COMMERCIAL NAME OF PRODUCT	PRODUCT LINE	MANUFACTURER
90762	Wilder Slide 11 Long Exit	Powerscape	GameTime
90703	Wilder Slide 11 (Straight)	Powerscape	GameTime
90709	Wilder Slide 11 (Slide Support)	Powerscape	GameTime
90700	Wilder Slide 11 (Single Entrance)	Powerscape	GameTime
90705	Wilder Slide 11 (Curve Right)	Powerscape	GameTime
G90273	Upright Galvanized 15'	Powerscape	GameTime
G90272	Upright Galvanized 14'	Powerscape	GameTime
G90271	Upright Galvanized 13'	Powerscape	GameTime
G90270	Upright Galvanized 12'	Powerscape	GameTime
90272	Upright Aluminum 14'	Powerscape	GameTime
90271	Upright Aluminum 13'	Powerscape	GameTime
90270	Upright Aluminum 12'	Powerscape	GameTime
91202	Transfer System Timbers 2'6"	Powerscape	GameTime
91179	Transfer Platform Timbers 4' Rise	Powerscape	GameTime
90653	Swerve Zip Slide (Single) 3'6" & 4' Left	Powerscape	GameTime
91609	SUNBLOX UMBRELLA CANOPY 7' THRU 8'	Powerscape	GameTime
90355	Store Window Panel	Powerscape	GameTime
90106	Schooner Climber 4'6" & 5'	Powerscape	GameTime
90475	Rain Wheel Panel	Powerscape	GameTime
80001	PLATFORM, TRIANGULAR	Powerscape	GameTime
90466	Maze Time Panel	Powerscape	GameTime
81766	Leaf Seat	Powerscape	GameTime
80687	Handhold Kick Plate Package	Powerscape	GameTime
91211	Funnel Bridge Timbers	Powerscape	GameTime
91564	FACE CREATOR PANEL	Powerscape	GameTime
91151	Climber Entryway Timbers	Powerscape	GameTime
91209	Climber Entryway (Barrier)	Powerscape	GameTime
91157	Archway W/Socket Timbers	Powerscape	GameTime
80657	ACCESS ATTACHMENT	Powerscape	GameTime
81530	1'-6", TO 30' OVERHEAD TREE CLIMBER, LINK	Powerscape	GameTime



## IPEMA CSA Z614:20 UPDATE NO. 1 CERTIFICATE OF COMPLIANCE

**ISSUE DATE: October 13, 2023**

**Requested By: Berkley**

**Project: Freedom Park Opt 1**

In the interest of public playground safety, IPEMA provides a third-party certification service whereby TÜV SÜD America validates a manufacturer's certification of conformance to CSA Z614:20 Update No. 1 (excluding clauses 10 and 11) Children's Playspaces and Equipment.

The manufacturer listed below has received written validation from TÜV SÜD America that the product(s) listed conform with the requirements of CSA Z614:20 Update No. 1 (excluding clauses 10 and 11).

This certificate is invalid if any component or part is replaced, unless purchased from the original manufacturer and assembled in accordance with the original equipment manufacturer's instructions. Check with the manufacturer to determine the validity of the certification of the product(s) listed prior to using this certificate for proof of certification.

MODEL #	COMMERCIAL NAME OF PRODUCT	PRODUCT LINE	MANUFACTURER
90762	Wilder Slide 11 Long Exit	Powerscape	GameTime
90703	Wilder Slide 11 (Straight)	Powerscape	GameTime
90709	Wilder Slide 11 (Slide Support)	Powerscape	GameTime
90700	Wilder Slide 11 (Single Entrance)	Powerscape	GameTime
90705	Wilder Slide 11 (Curve Right)	Powerscape	GameTime
G90273	Upright Galvanized 15'	Powerscape	GameTime
G90272	Upright Galvanized 14'	Powerscape	GameTime
G90271	Upright Galvanized 13'	Powerscape	GameTime
G90270	Upright Galvanized 12'	Powerscape	GameTime
90272	Upright Aluminum 14'	Powerscape	GameTime
90271	Upright Aluminum 13'	Powerscape	GameTime
90270	Upright Aluminum 12'	Powerscape	GameTime
91202	Transfer System Timbers 2'6"	Powerscape	GameTime
91179	Transfer Platform Timbers 4' Rise	Powerscape	GameTime
90653	Swerve Zip Slide (Single) 3'6" & 4' Left	Powerscape	GameTime
91609	SUNBLOX UMBRELLA CANOPY 7' THRU 8'	Powerscape	GameTime
90355	Store Window Panel	Powerscape	GameTime
90106	Schooner Climber 4'6" & 5'	Powerscape	GameTime
90475	Rain Wheel Panel	Powerscape	GameTime
80001	PLATFORM, TRIANGULAR	Powerscape	GameTime
90466	Maze Time Panel	Powerscape	GameTime
81766	Leaf Seat	Powerscape	GameTime
80687	Handhold Kick Plate Package	Powerscape	GameTime
91211	Funnel Bridge Timbers	Powerscape	GameTime
91564	FACE CREATOR PANEL	Powerscape	GameTime
91151	Climber Entryway Timbers	Powerscape	GameTime
91209	Climber Entryway (Barrier)	Powerscape	GameTime
91157	Archway W/Socket Timbers	Powerscape	GameTime
80657	ACCESS ATTACHMENT	Powerscape	GameTime
81530	1'-6", TO 30' OVERHEAD TREE CLIMBER, LINK	Powerscape	GameTime



## IPEMA CSA Z614:20 UPDATE NO. 1 CERTIFICAT DE CONFORMITÉ

**Date de Délivrance Initiale: octobre 13, 2023**

**Demandé par: Berkley**

**Nom du parc: Freedom Park Opt 1**

Dans l'intérêt de la sécurité au terrain de jeu, IPEMA offre une certification par une tierce partie et TÜV SÜD America valide une certification par le fabricant de la conformité à la norme CSA Z614:20 Update No. 1 (excluant les articles 10, 11) les enfants les espaces de jeu et du matériel.

Le fabricant ci-dessous a reçu la validation de la part de TÜV SÜD America que les produits énumérés ci-dessous sont conformes aux exigences de la norme CSA Z614:20 Update No. 1 (excluant les articles 10, 11).

Ce certificat n'est pas valide si un composant ou une pièce est remplacé, à moins que le composant soit acheté du fabricant d'origine et assemblé conformément aux instructions du fabricant de l'équipement. Vérifiez auprès du fabricant pour déterminer la validité de la certification du (des) produit(s) indiqué(s) avant d'utiliser ce certificat pour la preuve de la certification.

MODÈLE n°	NOM COMMERCIAL DU PRODUIT	LIGNE DE PRODUIT	MANUFACTURIER
90762	Wilder Slide 11 Long Exit	Powerscape	GameTime
90703	Wilder Slide 11 (Straight)	Powerscape	GameTime
90709	Wilder Slide 11 (Slide Support)	Powerscape	GameTime
90700	Wilder Slide 11 (Single Entrance)	Powerscape	GameTime
90705	Wilder Slide 11 (Curve Right)	Powerscape	GameTime
G90273	Upright Galvanized 15'	Powerscape	GameTime
G90272	Upright Galvanized 14'	Powerscape	GameTime
G90271	Upright Galvanized 13'	Powerscape	GameTime
G90270	Upright Galvanized 12'	Powerscape	GameTime
90272	Upright Aluminum 14'	Powerscape	GameTime
90271	Upright Aluminum 13'	Powerscape	GameTime
90270	Upright Aluminum 12'	Powerscape	GameTime
91202	Transfer System Timbers 2'6"	Powerscape	GameTime
91179	Transfer Platform Timbers 4' Rise	Powerscape	GameTime
90653	Swerve Zip Slide (Single) 3'6" & 4' Left	Powerscape	GameTime
91609	SUNBLOX UMBRELLA CANOPY 7' THRU 8'	Powerscape	GameTime
90355	Store Window Panel	Powerscape	GameTime
90106	Schooner Climber 4'6" & 5'	Powerscape	GameTime
90475	Rain Wheel Panel	Powerscape	GameTime
80001	PLATFORM, TRIANGULAR	Powerscape	GameTime
90466	Maze Time Panel	Powerscape	GameTime
81766	Leaf Seat	Powerscape	GameTime
80687	Handhold Kick Plate Package	Powerscape	GameTime
91211	Funnel Bridge Timbers	Powerscape	GameTime
91564	FACE CREATOR PANEL	Powerscape	GameTime
91151	Climber Entryway Timbers	Powerscape	GameTime
91209	Climber Entryway (Barrier)	Powerscape	GameTime
91157	Archway W/Socket Timbers	Powerscape	GameTime
80657	ACCESS ATTACHMENT	Powerscape	GameTime
81530	1'-6", TO 30' OVERHEAD TREE CLIMBER, LINK	Powerscape	GameTime

Proposal for  
City of Calabasas

Prepared by



10-12-2023  
Job # 110624-01

Freedom Park Playground Option 2



435-760-5103 | [www.gwpark.com](http://www.gwpark.com)



Great Western Installations, Inc  
 975 S. State Hwy 89  
 Logan, UT 84321  
 Cell: 435-760-5103  
 Office: 435-245-5055  
 Fax: 435-245-5057  
 tyler@gwpark.com  
 www.gwpark.com

10/12/2023  
 Quote #  
 110624-01-02

## Freedom Park Playground Option 2

City of Calabasas  
 Attn: Erica Green  
 100 Civic Center Way  
 Calabasas, CA 91302  
 egreen@cityofcalabasas.com

Ship to Zip 91302

Quantity	Part #	Description	Unit Price	Amount
1	RDU	GameTime - Custom 5-12 Playground - <ul style="list-style-type: none"> <li>Drawing Reference #110624-01-Opt 2</li> </ul>	\$66,824.00	\$66,824.00
1	5958SP	GameTime - VistaTree Top 1	\$13,227.00	\$13,227.00
1	5179	GameTime - Welcome Sign (5-12)	\$713.00	\$713.00
1	INSTALL	TJ Janca - Site Work- <ul style="list-style-type: none"> <li>Demo and remove existing playground footings.</li> <li>Demo and remove existing 1,323 of existing sand at 7.5" depth (city will move table and trash sitting on top of sand, no footing in those items).</li> <li>Demo and remove 193 sf of existing rubber and concrete base to 7.5" depth</li> <li>Provide and install 165 lf of MOW curb</li> <li>Provide and install 1,516 sf of compacted base at 4" depth, 90% compaction.</li> <li>Provide/install temp fencing around playground area for 160'LF (windscreen and sand bags not included)</li> <li>Remove and dispose spoils.</li> <li>Prevailing wages.</li> <li>Price includes one (1) move-on only.</li> </ul>	\$24,967.00	\$24,967.00
1	INSTALL	TJ Janca - Playground Equipment-Opt2- <ul style="list-style-type: none"> <li>Installation only of (1) Gametime Structure #110624-01-Opt2 (Vista Tree Top)</li> <li>Footings excavation, and concrete.</li> <li>Equipment assembly.</li> <li>Removal of spoils.</li> <li>Prevailing wages.</li> <li>Price includes one (1) move-on only.</li> </ul>	\$29,540.00	\$29,540.00
1	INSTALL	TJ Janca - Surfacing-Standard 50/50- <ul style="list-style-type: none"> <li>Install approximately 1,516 sq. ft. of 3½" Pro-Tect TurfTM</li> <li>50% black, 50% standard color wear course.</li> <li>Standard colors (Blue, Green, Beige, Red).</li> <li>Use of California recycled tires.</li> <li>Use of aromatic binder.</li> <li>Prevailing wages.</li> <li>Removal of our construction debris.</li> <li>Price includes one (1) move-on only.</li> <li>Standard two-year warranty.</li> </ul>	\$26,980.00	\$26,980.00
1	Permits	Other Products 1 - Stamped Plans/Calcs and Permit Fees	\$7,300.00	\$7,300.00
1	P&P	Payment and Performance Bond - Payment and Performance Bond	\$3,575.00	\$3,575.00
			<b>Sub Total</b>	<b>\$173,126.00</b>
			<b>Discount</b>	<b>(\$18,897.70)</b>
			<b>Freight</b>	<b>\$9,862.33</b>
			<b>Tax</b>	<b>\$5,877.30</b>
			<b>Total</b>	<b>\$169,967.93</b>



Great Western Installations, Inc  
975 S. State Hwy 89  
Logan, UT 84321  
Cell: 435-760-5103  
Office: 435-245-5055  
Fax: 435-245-5057  
tyler@gwpark.com  
www.gwpark.com

10/12/2023  
Quote #  
110624-01-02

## Freedom Park Playground Option 2

### Comments

Your Sales Rep is Tyler Kyriopoulos. Please reach out to Tyler at 435-760-5103 if you should have any questions regarding this quote.

Due to the volatility of freight costs, the freight pricing is subject to change at the time of order.

Pricing is subject to change. Request updated pricing when purchasing from quotes more than 30 days old.

Shipping to Site Address:  
4041 Balcony Dr.  
Calabasas, CA 91302

\*Freight charges are based on listed zip code and are subject to change if shipping information changes.

\*Deposit may be required.

Customer is responsible for offloading.

Prevailing Wages

DIR #1000028191 CSLB #929912 B & C61/D34

### TERMS & CONDITIONS:

Remittance Address:  
975 S. Hwy 89  
Logan, UT 84321

- **PRICING:** Pricing is subject to change. Request updated pricing when purchasing from quotes more than 30 days old.
- **PAYMENT TERMS:** Net 30 days subject to approval by Credit Manager. A signed P.O. made out to Great Western Recreation or this signed quotation is required for all orders unless otherwise noted. Equipment shall be invoiced separately from other services and shall be payable in advance of those services and project completion. Checks should be made payable to Great Western unless otherwise directed.
- **FINANCE CHARGE:** A 1.5% monthly finance charge (or as permitted by law) will be added to invoices over 30 days past due.
- **TAXES:** Taxes will be shown as a separate line item when included. Any applicable taxes not shown will be added to final invoice. A copy of your tax exemption certificate must be submitted at time of order or taxes will be added to your invoice.
- **MINIMUM ORDER:** Our minimum order is \$50 (USD) Any order less than \$5000 requires cash with order or payment by major credit card.
- **SHIPMENT:** Multiple shipments may be required based on point of origin. Above costs assume one shipment for each vendor quoted.
- **DELIVERY:** It is the responsibility of the owner to offload and inventory equipment, unless other arrangements have been made. Missing or damaged equipment must be reported within 60 days of acceptance of delivery.

### INSTALLATION CONDITIONS:

- **ACCESS:** Site should be clear, level and allow for unrestricted access of trucks and machinery.
- **STORAGE:** Customer is responsible for providing a secure location to off-load and store the equipment during the installation process. Once equipment has delivered to the site, the owner is responsible should theft or vandalism occur unless other arrangements are made and noted on the quotation.
- **FOOTER EXCAVATION:** Installation pricing is based on footer excavation through earth/soil only. Customer shall be responsible for unknown conditions such as buried utilities (public & private), tree stumps, rock, or any concealed materials or conditions that may result in additional labor or materials cost.
- **UTILITIES:** Owner is responsible for locating any private utilities.
- **ADDITIONAL COSTS:** Pricing is based on a single mobilization for installation unless otherwise noted. Price includes ONLY what is stated in this quotation. If additional site work or specialized equipment is required, pricing is subject to change.





Great Western Installations, Inc  
975 S. State Hwy 89  
Logan, UT 84321  
Cell: 435-760-5103  
Office: 435-245-5055  
Fax: 435-245-5057  
tyler@gwpark.com  
www.gwpark.com

10/12/2023  
Quote #  
110624-01-02

## Freedom Park Playground Option 2

### ACCEPTANCE OF QUOTATION:

Acceptance of this proposal indicates your agreement to the terms and conditions stated herein.

Purchase Amount: **\$169,967.93**

Date: \_\_\_\_\_

\_\_\_\_\_  
Signature

Please fill out this [ORDER FORM](#), this is required to process the order.

**Freedom Park Playground, Project 110624-01-Opt 2  
Calabasas, CA**



**A STRONG FOUNDATION IN PLAY FOR OVER 50 YEARS**

**P: (435) 245-5055 / F: 435 245-5057 [Tyler@gwpark.com](mailto:Tyler@gwpark.com)**



**Freedom Park Playground, Project 110624-01-Opt 2  
Calabasas, CA**



**A STRONG FOUNDATION IN PLAY FOR OVER 50 YEARS**

**P: (435) 245-5055 / F: 435 245-5057 [Tyler@gwpark.com](mailto:Tyler@gwpark.com)**



**Freedom Park Playground, Project 110624-01-Opt 2  
Calabasas, CA**

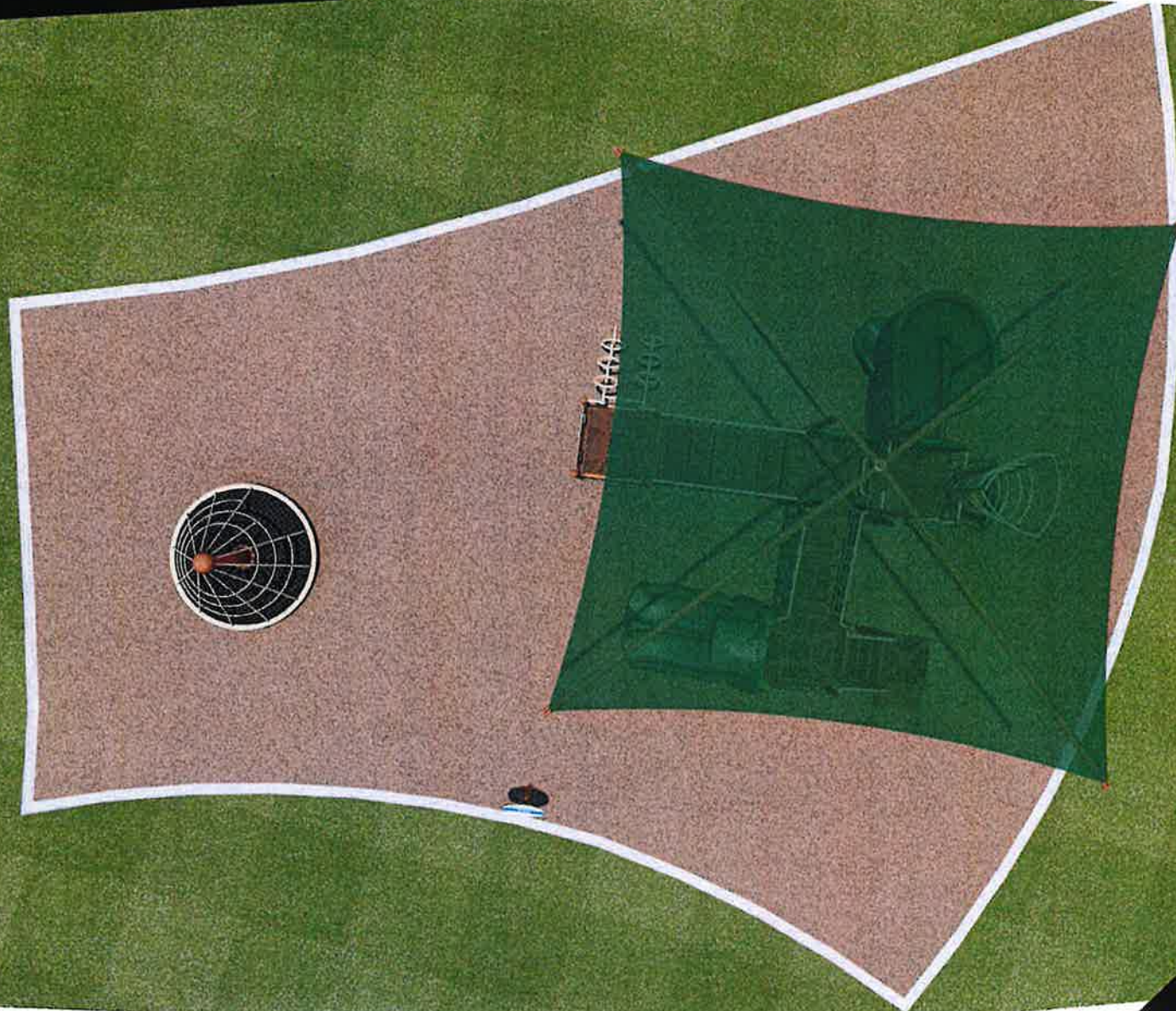


**A STRONG FOUNDATION IN PLAY FOR OVER 50 YEARS**

**P: (435) 245-5055 / F: 435 245-5057 Tyler@gwpark.com**



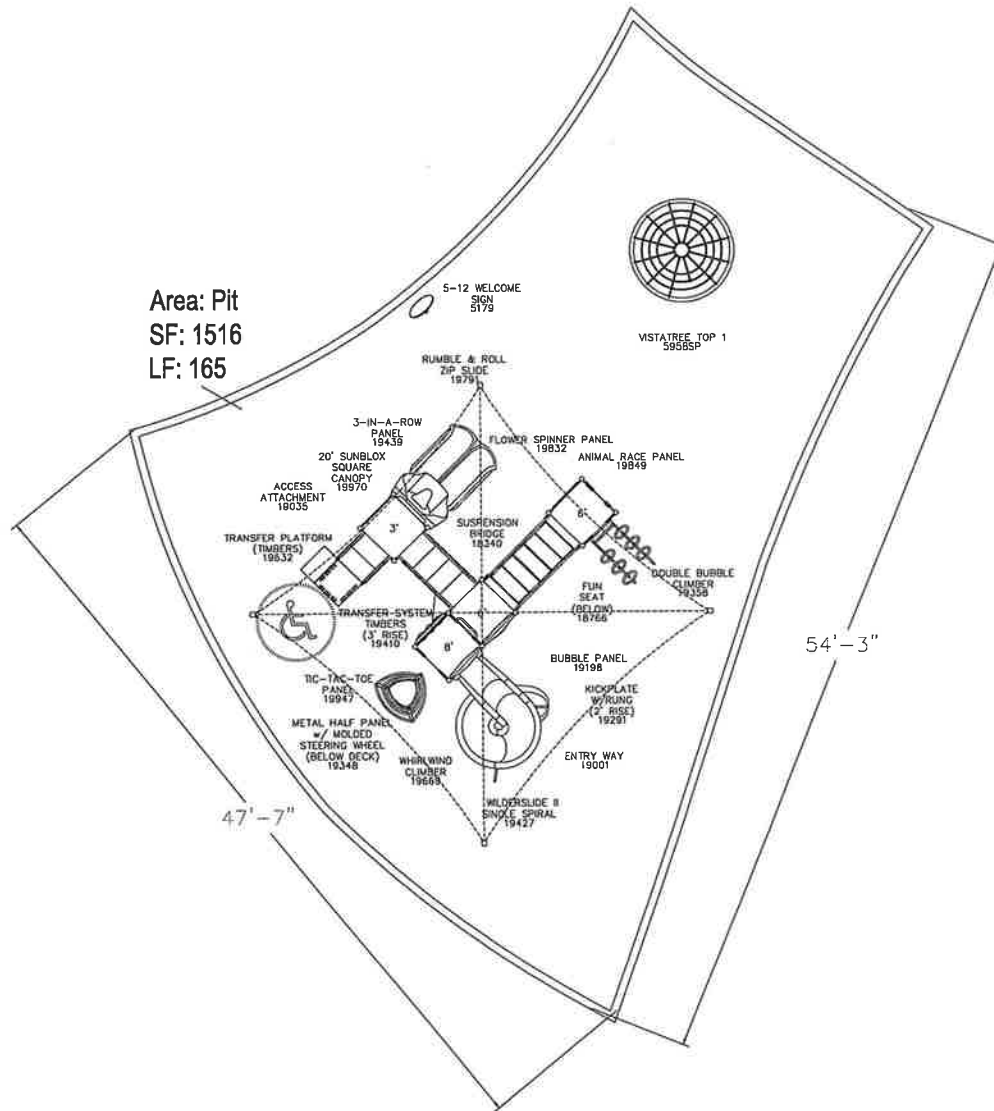
**Freedom Park Playground, Project 110624-01-Opt 2  
Calabasas, CA**



**A STRONG FOUNDATION IN PLAY FOR OVER 50 YEARS**

**P: (435) 245-5055 / F: 435 245-5057 [Tyler@gwpark.com](mailto:Tyler@gwpark.com)**





Area: Pit  
SF: 1516  
LF: 165



City of Calabasas  
Freedom Park  
Calabasas, CA  
Representative  
Great Western Recreation

SALES REP  
TYLER KYRIOPOULOS  
435-780-5103  
TYLER@GWPARK.COM

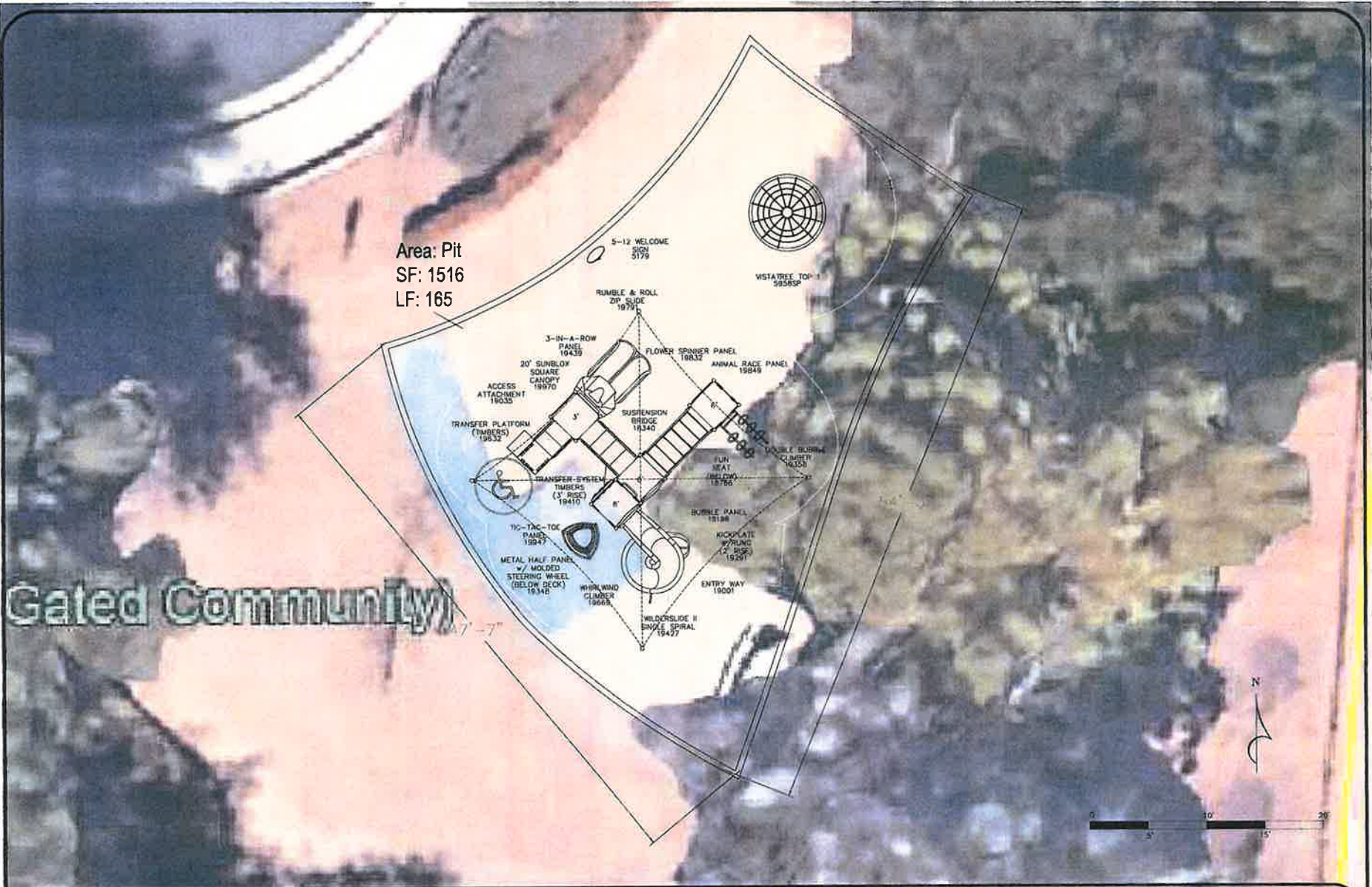
Total Elevated Play Components	10	Required	-
Total Elevated Play Components Accessible By Ramp	7	Required	5
Total Elevated Components Accessible By Transfer	3	Required	3
Total Accessible Ground Level Components Shown	3	Required	3
Total Different Types Of Ground Level Components	3	Required	3

This play equipment is recommended for children ages 5 - 12

Minimum Area Required: -  
Scale: -  
This drawing can be scaled only when in an 18" x 24" format

**IMPORTANT:** Soft resilient surfacing should be placed in the use zones of all equipment, as specified for each type of equipment, and at depths to meet the critical fall heights as specified by the U.S. consumer Product Safety Commission, ASTM standard F 1487 and Canadian Standard CAN/CSA-Z-814

Drawn By:  
BW  
Date:  
10/9/23  
Drawing Name:  
110624-01-Opt 2



Gated Community



City of Calabasas  
Freedom Park  
Calabasas, CA  
Representative  
Graal Western Recreation

SALES REP  
TYLER KYRIPOULOS  
435-760-5103  
TYLER@GWPARC.COM

Total Elevated Play Components	10	Required	-
Total Elevated Play Components Accessible By Ramp	7	Required	5
Total Elevated Components Accessible By Transfer	3	Required	3
Total Accessible Ground Level Components Shown	3	Required	3
Total Different Types Of Ground Level Components	3	Required	3

This play equipment is recommended for children ages 5 - 12

Minimum Area Required  
Scale: -  
This drawing can be scaled only when in an 18" x 24" format

IMPORTANT: Soft resilient surfacing should be placed in the use areas of all equipment, as specified for each type of equipment, and at depths to meet the critical fall heights as specified by the U.S. Consumer Product Safety Commission, ASTM standard F 1487 and Canadian Standard CAN/CSA-Z 614

Drawn By:  
BW  
Date:  
10/9/23  
Drawing Name:  
110624-01-Opt 2