

EXHIBIT A

# The Commons Lane

CALABASAS, CALIFORNIA

JULY 19, 2023 ARP

ELKUS | MANFREDI  
ARCHITECTS





**Existing Site Plan**





CALABASAS ROAD

CIVIC CENTER WAY

Commons Lane

PREVIOUS

MECHANICAL

FITNESS

CLUBROOM

MECHANICAL

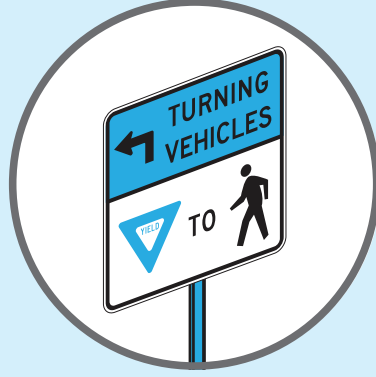
# Commons Lane - A pedestrian first multi-modal complete street

## Safety



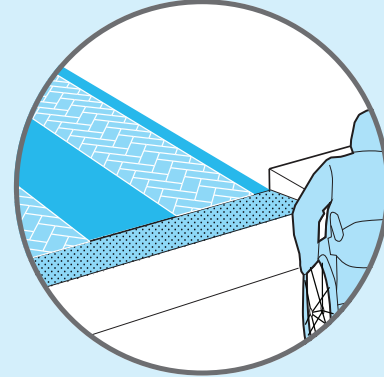
Lower motor vehicle speeds by implementing traffic calming measures:

- ▶ 24' asphalt drive lane with wider flush concrete aprons
- ▶ Stop signs at pedestrian crossings
- ▶ Elevated crosswalks / speed tables with textured materials
- ▶ Speed limit signage
- ▶ Corner and midblock curb extensions at crosswalks *(pending fire dept. approval)*



Less exposure to conflicts: Accessible environment:

- ▶ Clear pedestrian paths of travel
- ▶ Minimize crossing distances
- ▶ Align crossings with primary pedestrian destinations
- ▶ Improved parking field connectivity redirecting traffic from Commons Lane
- ▶ Maximize pedestrian sight lines and visibility
- ▶ Signage to enhance driver awareness of pedestrians
- ▶ American's With Disabilities Act (ADA) compliant curb ramps that prevent ponding of precipitation
- ▶ ADA compliant crosswalks and sidewalks
- ▶ Accessible pedestrian signals that inform pedestrian & vehicular traffic when signals have been activated
- ▶ Gentle site transitions



## Convenience



Comfortable, safe, and inviting spaces:

- ▶ Minimum 15' sidewalk widths
- ▶ Generous pedestrian zone paired with transparent storefronts and active building frontage zone
- ▶ Provide street trees, landscape, and lighting while maintaining clear pedestrian sightlines
- ▶ Public amenities such as benches, recycling and trash receptacles, art, street cafes, etc.





Corner Extensions  
*(pending fire dept. approval)*



Mid-Block Narrowing  
*(pending fire dept. approval)*



On-street Parking



Raised Crossings & Intersections



Special Paving



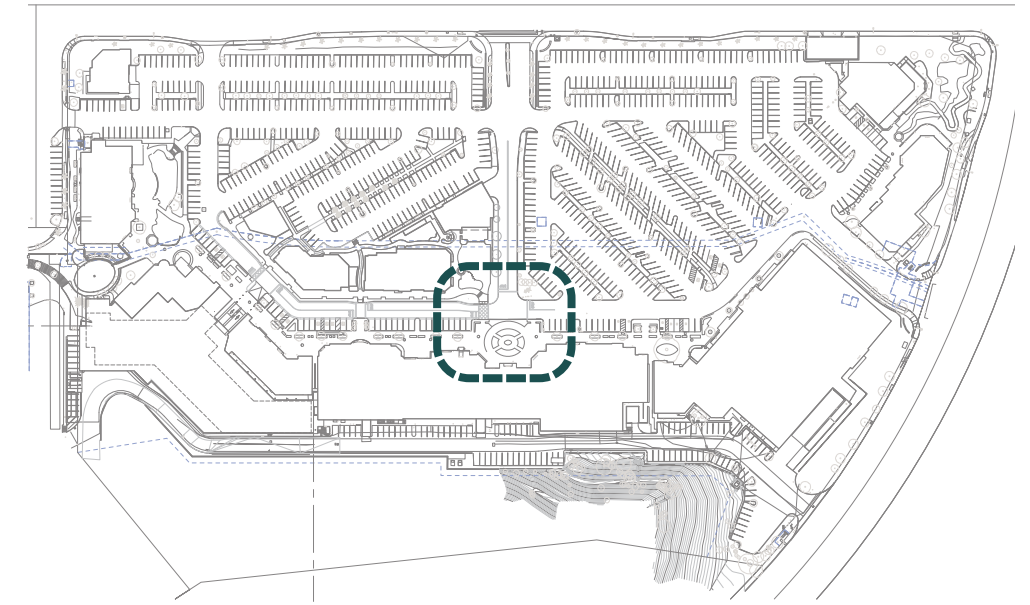
Parking Control Arms



Signage

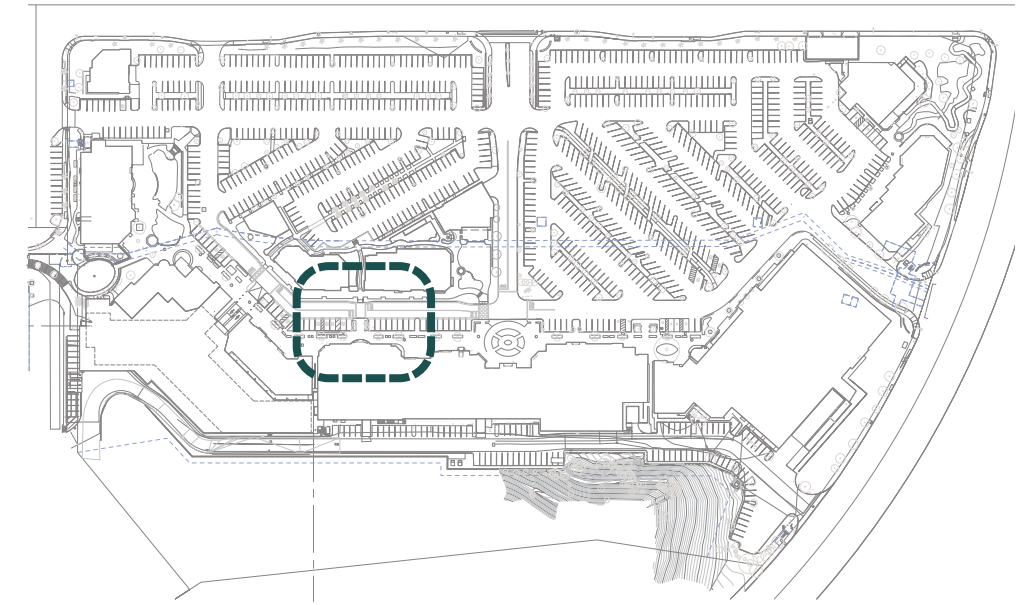


Signals



**TRAFFIC CALMING & SAFETY MEASURES**

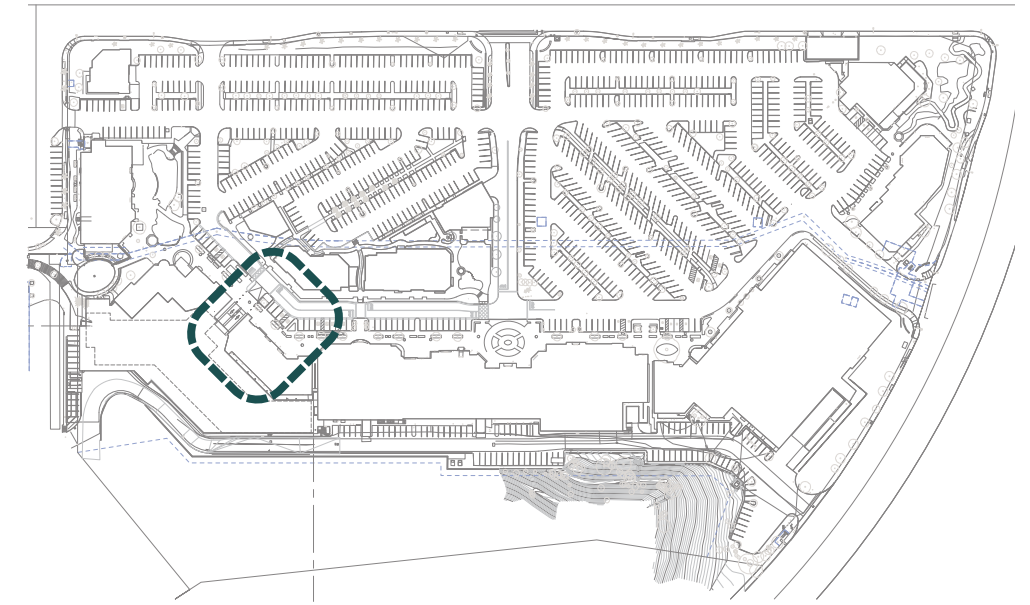
- 1. Corner Extensions *(pending Fire Department approval)*
- 2. Mid-Block Narrowing *(pending Fire Department approval)*
- 3. On-street Parking
- 4. Raised Intersections with Special Paving
- 5. Speed Table with Special Paving
- 6. Parking Control Arms
- 7. Stop Signs
- 8. Accessible Crossings
- 9. Generous Sidewalks



**TRAFFIC CALMING & SAFETY MEASURES**

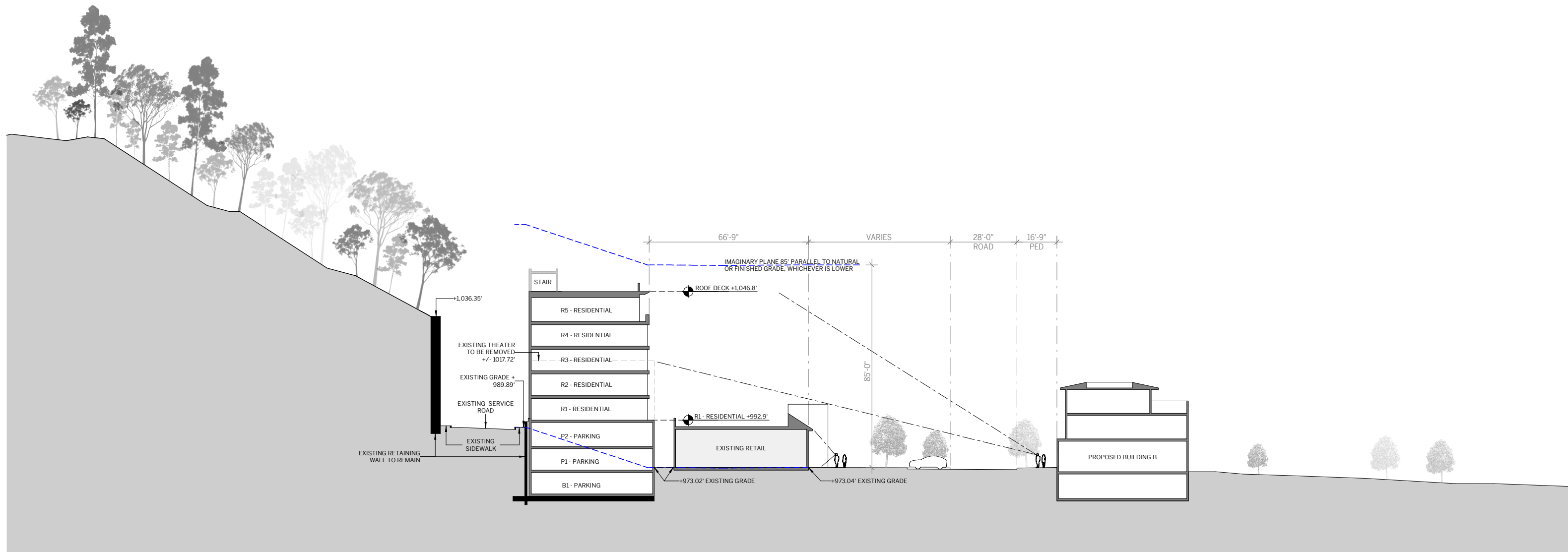
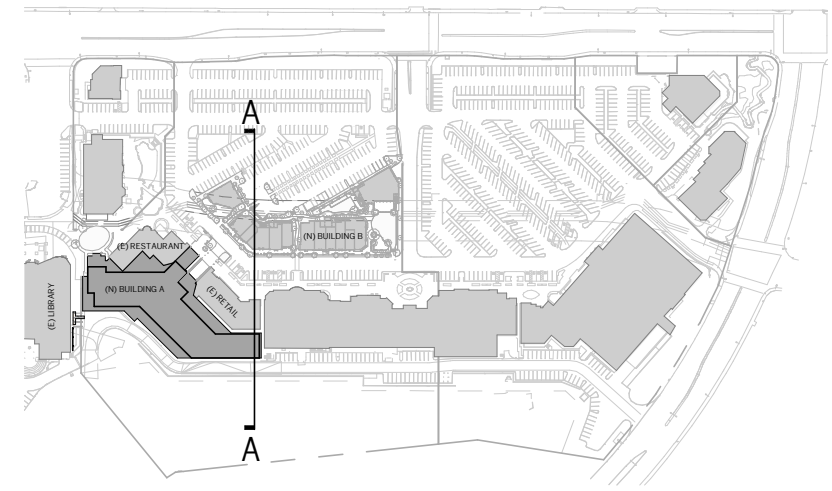
- 1. Corner Extensions *(pending Fire Department approval)*
- 2. Mid-Block Narrowing *(pending Fire Department approval)*
- 3. On-street Parking
- 4. Raised Intersections with Special Paving
- 5. Speed Table with Special Paving
- 6. Parking Control Arms
- 7. Stop Signs
- 8. Accessible Crossings
- 9. Generous Sidewalks





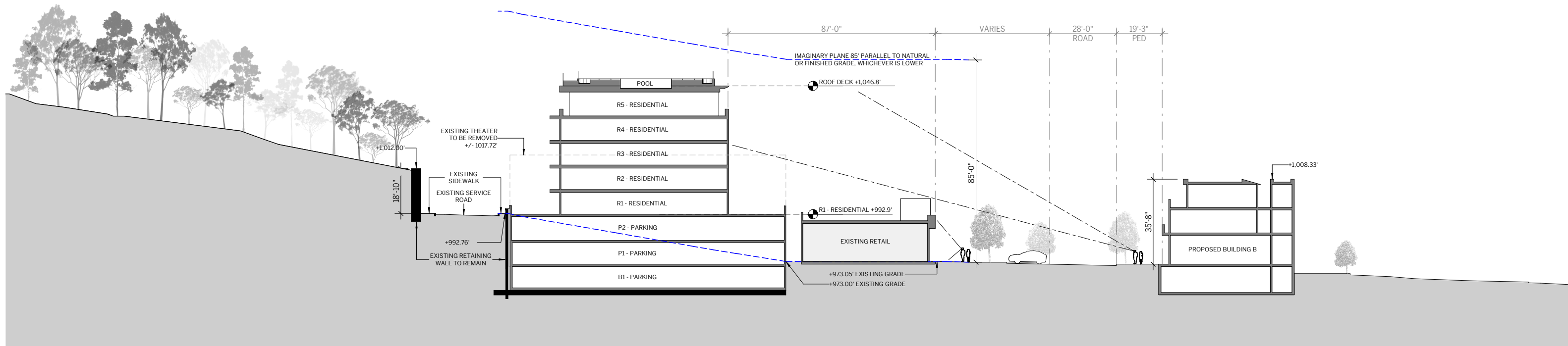
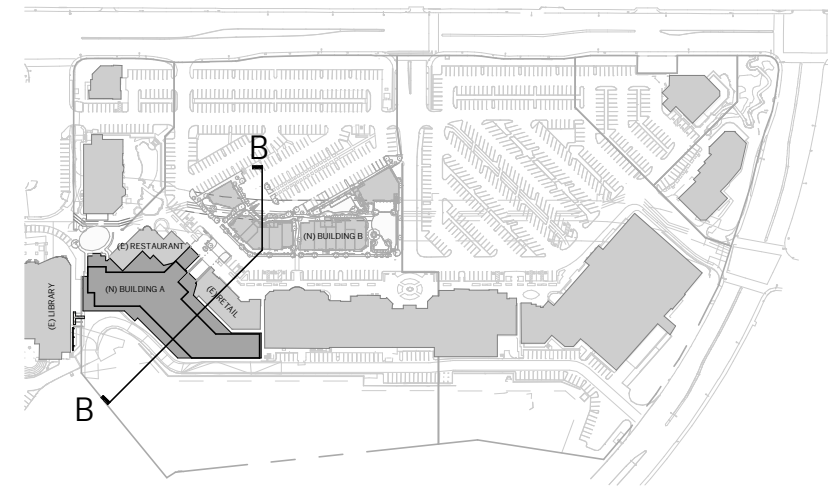
**TRAFFIC CALMING & SAFETY MEASURES**

- 1. Corner Extensions (*pending Fire Department approval*)
- 2. Mid-Block Narrowing (*pending Fire Department approval*)
- 3. On-street Parking
- 4. Raised Intersections with Special Paving
- 5. Speed Table with Special Paving
- 6. Parking Control Arms
- 7. Stop Signs
- 8. Accessible Crossings
- 9. Generous Sidewalks
- 10. Bollards



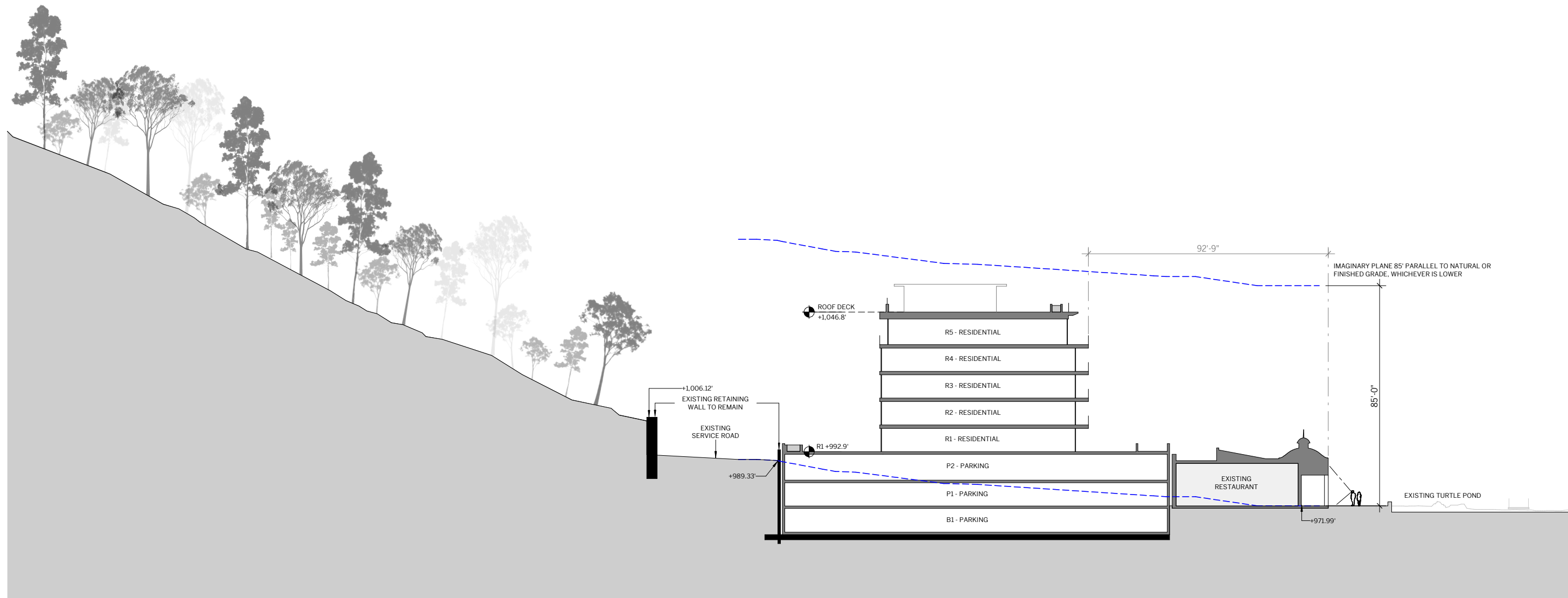
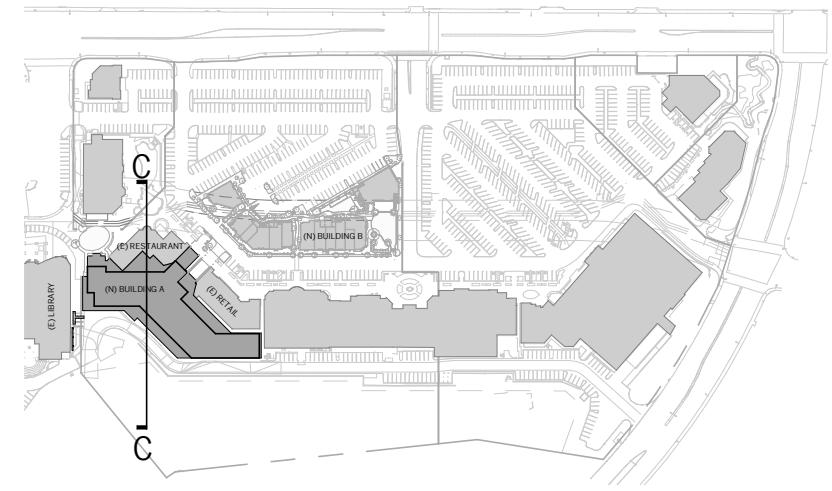
**Proposed Section A**





**Proposed Section B**





**Proposed Section C**





TYPICAL



COMMUNITY EVENTS







# **Palisades Village**











Commons Lane



Swarthmore Avenue

- KEY
-  Complete Street
  -  Pedestrian Plaza / Park

**Scale Comparison**





### TRAFFIC CALMING & SAFETY MEASURES

1. Corner Extensions
2. Mid-Block Narrowing
3. On-street Parking
4. Speed Table with Special Paving
5. Stop Signs
6. Accessible Crossings
7. Generous Sidewalks
8. Chicane





