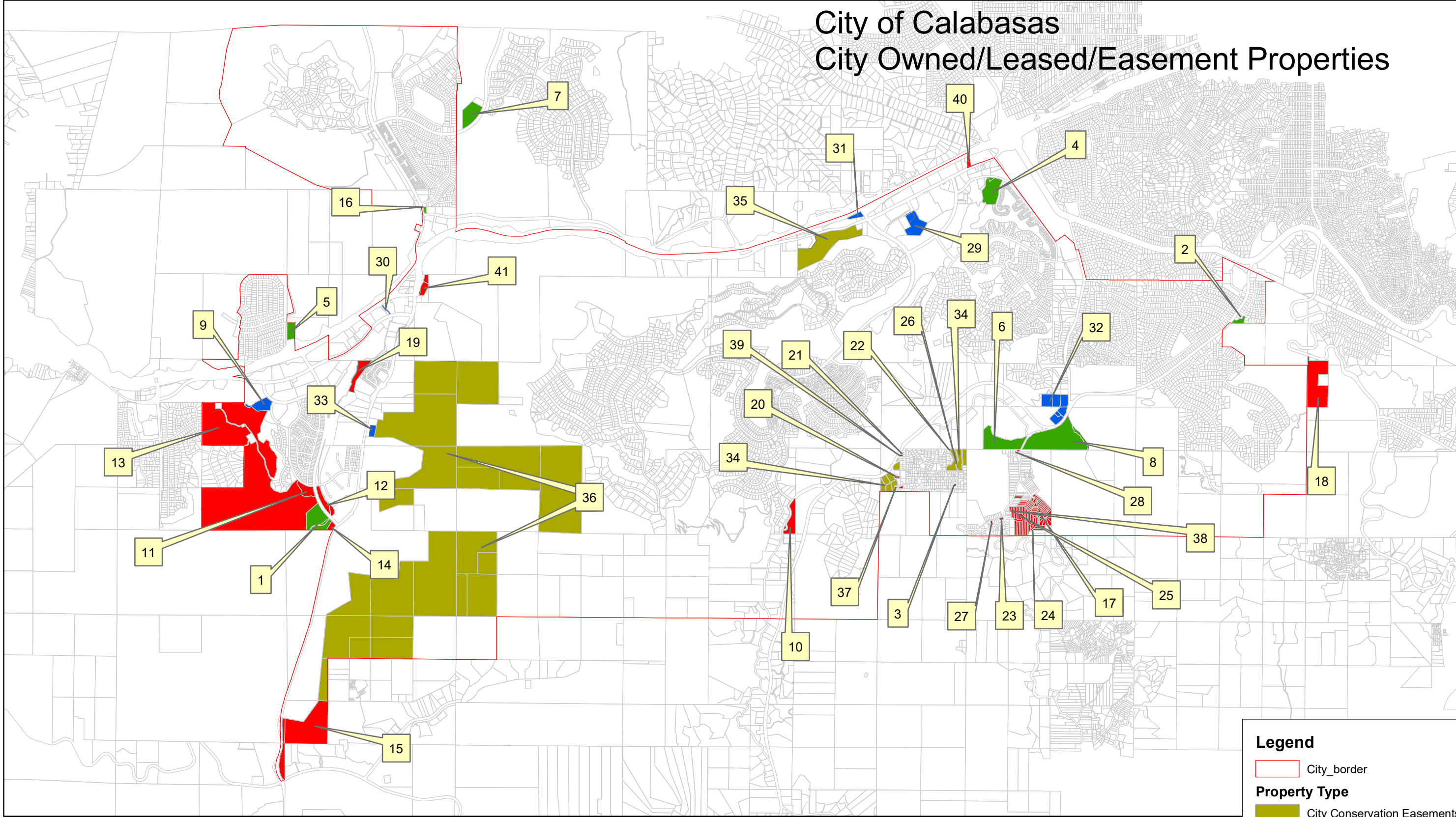
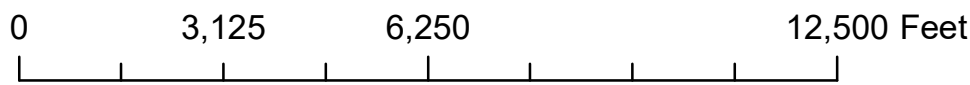


City of Calabasas City Owned/Leased/Easement Properties



Legend

- City_border
- Property Type**
 - City Conservation Easements
 - City Parks
 - Miscellaneous City Property
 - City Owned Open Space



Information taken from City GIS system.
Map updated May 2023



CITY OF CALABASAS
CITY OWNED/ LEASED/EASEMENT PROPERTIES
May 2023

Map Key	Name/Location/APN	Acres	Year Acquired/Dedicated	Geographical Subregion³
CITY PARKS				
1	Juan Bautista de Anza Park 2063-009-902 & 903	9.44	1991/1996	LH
2	Freedom Park 2173-017-900	1.02	1991/1994	MUL
3	Highlands Park NA	.214	1991/1997	MH
4	Calabasas Tennis and Swim Center 2068-005-900 & 901	8.80	1994	CP
5	Grape Arbor Park 2052-012-901	4.099	1991	SAR
6	Calabasas Creekside Park and Community Center 2072-024-900	12.94	1998	MH
7	Gates Canyon Park 2049-004-901 & 902	7.052	Leased since 1993. Acquired in 2000.	MC
8	Wild Walnut Park 2080-014-902	26.41	2000/2003	MH
9	Agoura Hills/Calabasas Community Center - Jointly held w/Agoura Hills 2064-004-903	4.152	1995/1999	LH
<i>Park Subtotal</i>		<i>74.13 acres</i>		
OPEN SPACE				
10	Dry Canyon/at Calabasas Park Estates Gate 4455-057-902	5.01	1991	MH
11	Southwest corner of Lost Hills Road and Calabasas	3.33	1993	LH

	Hills Road ² 2063-043-015			
12	Lost Hills at Meadow Creek near Malibu Meadows Equestrian/Hiking Trail 2063-034-900	3.79	1995	LH
13	Dedicated Open Space (Toll Brothers) adjacent to Calabasas View 2063-045-900, 901, 902	180.67	1995	LH
14	Southwest corner of Lost Hills Road and Las Virgenes Road 2063-009-904	1.7	1996	LH
15	Las Virgenes n/o Mulholland Las Virgenes View Trail 4455-028-902, 903 & 904	33.39	1997	LH
16	Las Virgenes/Parkmor 2052-043-900	.50	1997	MC
17	Dorothy Road - 84 lots 2072-033-902 thru 912 2080-016-900 thru 906 2080-017-901 thru 917 2080-018-900 thru 917 2080-019-900 thru 930 2080-020-906, 907 & 908	23.05	2001	MH
18	LeMans 4434-003-903	19.23	2002	MUL
19	Tax Default - Malibu Hills/Adjacent to Las Virgenes Creek behind Steeplechase- Equestrian/Hiking Trail 2064-025-900	4.90	2004	LH
20	Tax Default – Calabasas Highlands on Canyon Drive 2072-020-901, 902	.41	2005	MH
21	Tax Default - Mulholland Highway in Calabasas Highlands	.10	2006	MH

	2072-002-903			
22	Tax Default - Northern portion of Lily Drive in Calabasas Highlands 2072-007-904	.22	2006	MH
23	Tax Default - SWC of Valdez Rd. & Old Topanga Canyon 2072-030-901	.15	2006	MH
24	Tax Default - NWC of Valdez Rd./Summit to Summit Trail 2080-020-909	.02	2006	MH
25	Landlocked parcel east of Old Topanga Canyon adjacent to Dorothy Road parcels 2080-017-917	.07	2006	MH
26	Tax Default – Lilac Trail north of Holly Trail 2072-007-905	.43	2009	MH
27	Tax Default – Valdez Road 2072-030-902	.1928	2011	MH
28	Tax Default – Canon Drive 2072-025-900	.1342	2011	MH
37	Tax Default – Cannon Drive/Elsie Drive 2072-018-902	.19	2017	MH
38	Tax Default – Old Topanga Canyon 2080-017-918	.18	2017	MH
39	Tax Default – Mulholland Hwy in Calabasas Highlands 2072-002-904	.14	2018	MH
<i>Open Space Subtotal</i>		<i>277.81 acres</i>		
MISCELLANEOUS				
29	Calabasas Civic Center 2068-003-902	7.572	1999	CP
30	Concrete flood control channel 2064-002-034 (Creekside Village) ¹	1.08	2001	LH

31	Northwest quadrant of Calabasas Road and Parkway Adjacent to Shell Gas Station-9,387 sq. ft. Motorcars Lease Area-22,624 sq. ft. 2069-007-906	.74	2003	CP
32	Headwaters Corner - 2069-016-900 thru 905	11.7	2004	MH
40	Old Town Park and Ride 2068-002-901	.69	2014	CP
41	Rondell Park and Ride 2069-031-901 2069-031-900	1.29	2020	LH
<i>Miscellaneous Subtotal</i>		<i>23.07 acres</i>		
TOTAL-CITY OWNED PROPERTIES		373.43 acres		
CITY LEASED PROPERTY				
33	Calabasas Bark Park 2069-011-907 ¹	.80	1998	LH
CITY CONSERVATION EASEMENTS				
34	Calabasas Highlands – County Surplus Properties- 2072-002-900, 2072-007-901, 902, 2072-021-900 & 901, 2072-022-900, 901 & 902	12	2003	MH
MRT CONSERVATION EASEMENTS				
35	South side of Calabasas Road between Los Angeles County Fire Station and Mureau Road 2069-032-025	19	2003	CP
36	East side of Las Virgenes Road adjacent to the LVMWD headquarters 4455-027-903, 4455-027-906, 4455-027-907, 4455- 026-901, 4455-026-902, 4455-026-903, 4455-002- 904, 4455-002-905, 4455-002-9003, 4455-002-902, 4455-025-902, 4455-025-903, 4455-001-902, 4455- 001-903, 4455-001-900, 2069-011-910, 2069-011- 911, 2069-011-908, 4455-001-900, 4455-027-905	661.93	Unknown	LH

TOTAL EASEMENTS/LEASED**693.73 acres**

¹ Assessor parcel number for entire parcel. The flood control channel and Bark Park do not have separate assessor parcel numbers.

² Property to be transferred to the City per MOU with RCS Development. Staff is working on transfer.

³ Geographical Subregion

CP	Calabasas Park	LH	Lost Hills	MC	Malibu Canyon
MH	Mulholland Corridor	MUL	Greater Mulwood	SAR	Saratoga Hills