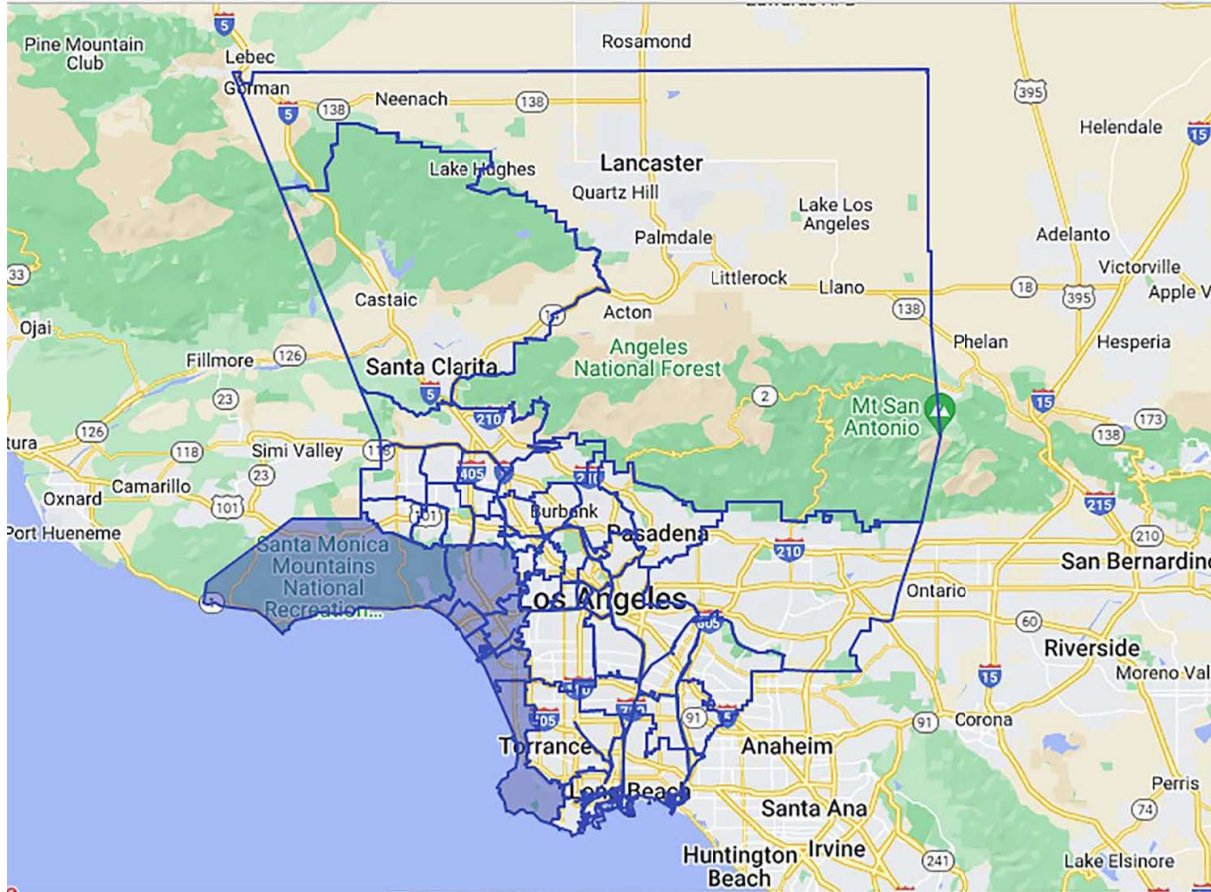
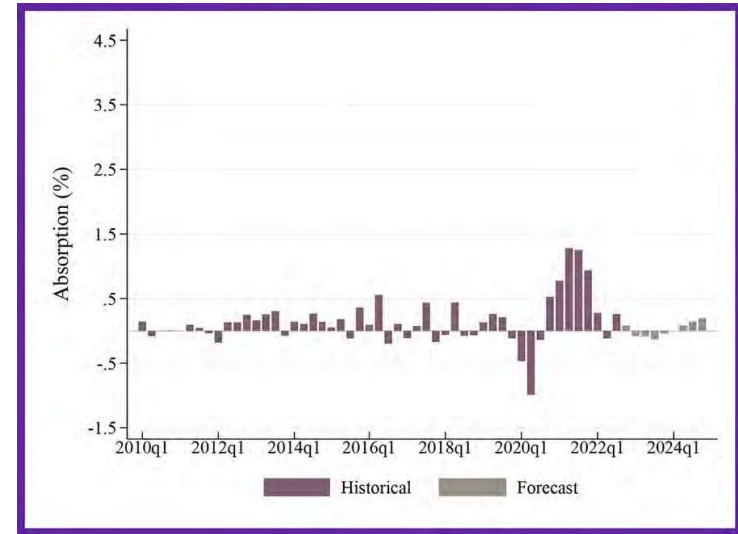
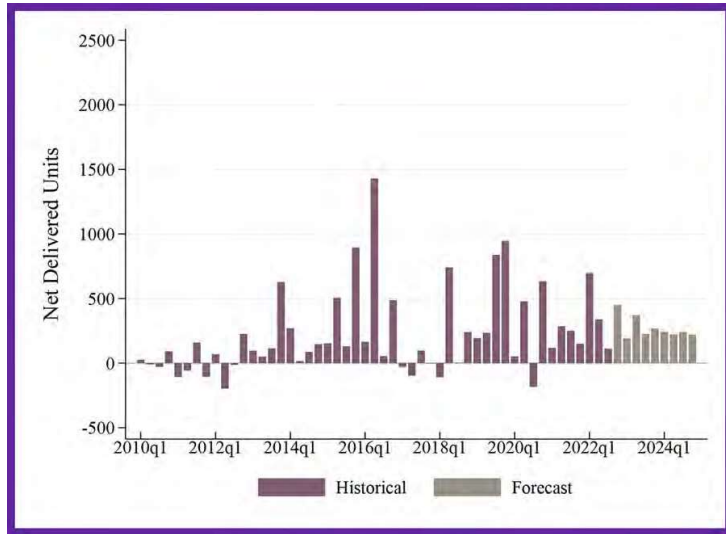


### Coastal Communities-Beverly Hills

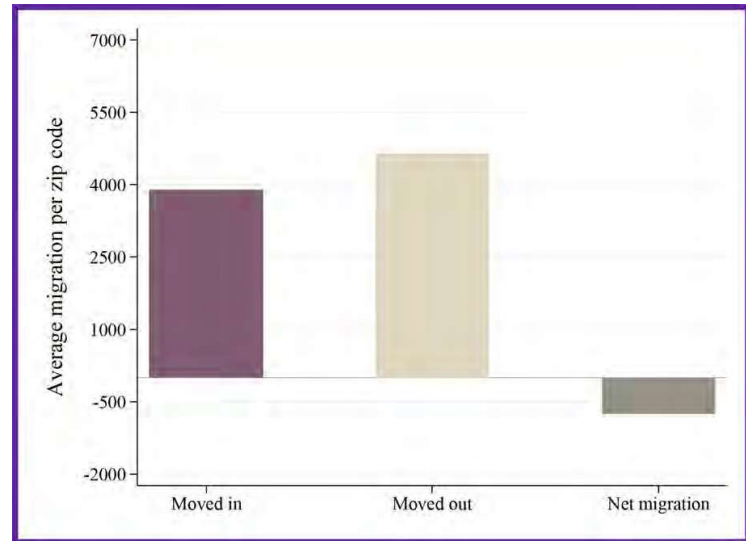
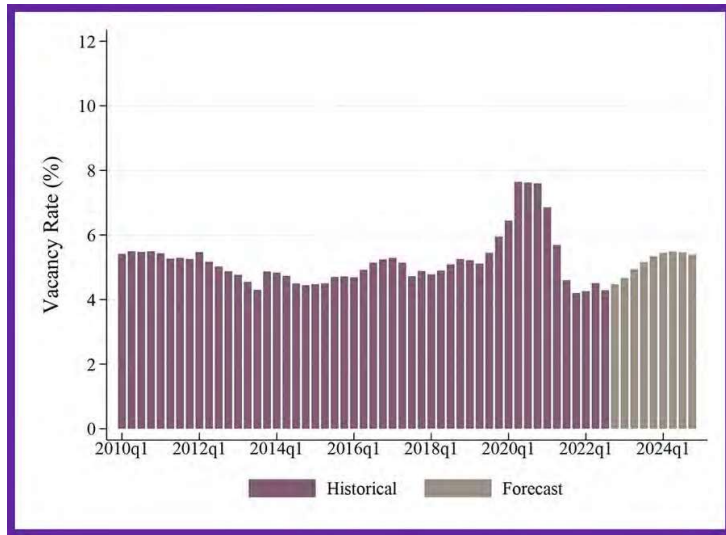


Source: CoStar

Coastal Communities-Beverly Hills Market - Delivered Units, Absorption, Vacancy, and Migration - Los Angeles County, 2010-2024

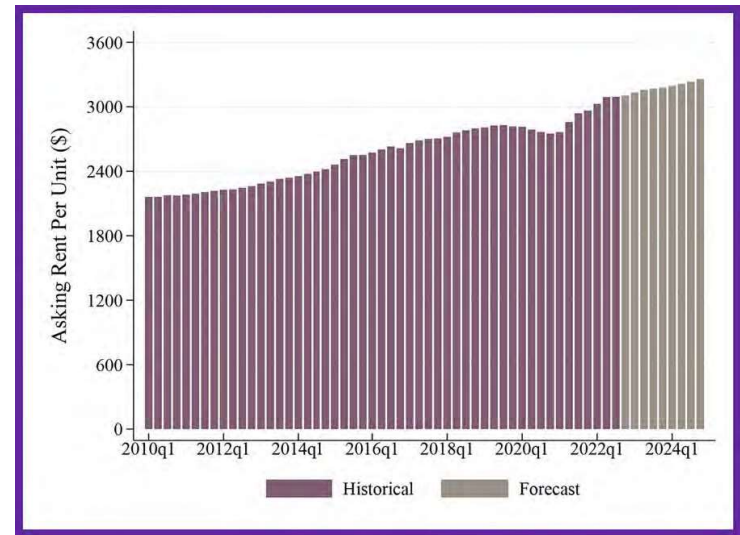
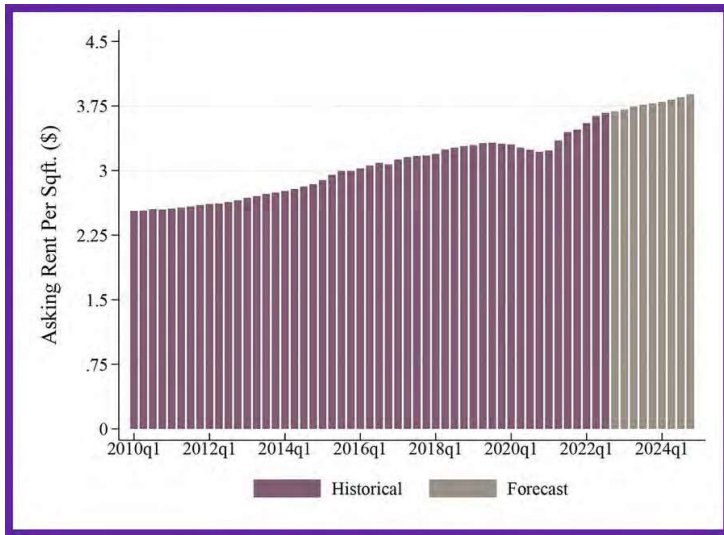
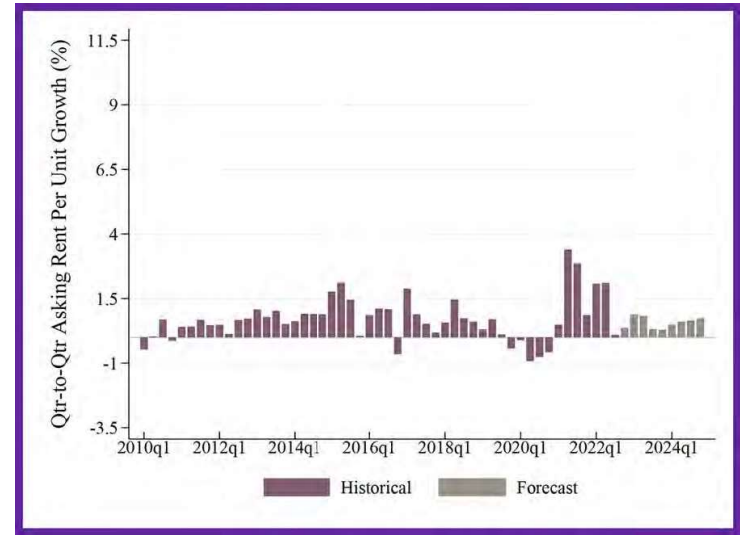
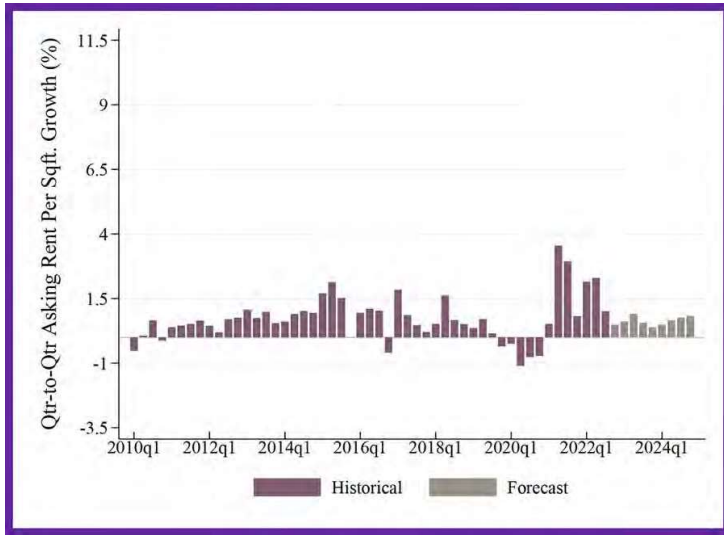


Coastal Communities-Beverly Hills Migration since the start of COVID-19



Source: USC Casden forecasts based on CoStar data and USPS net-migration data.

Coastal Communities-Beverly Hills Market - Asking Rents - Los Angeles County, 2010-2024



Source: USC Casden forecasts based on CoStar data and USPS net-migration data.