

City of Calabasas



# Updates to the General Plan Circulation and Safety Elements

Planning Commission Meeting, 01-19-2023



# Project Team



- City Departments
  - Planning Division
  - Transportation/Transit Division
  - Public Safety and Emergency Preparedness
- Consultant Team



# Circulation and Safety Elements



- The Circulation and Safety Elements are required chapters of the General Plan
  - Circulation Element establishes policies to achieve and maintain a balanced, safe, and reliable transportation system city-wide
  - Safety Element identifies policies that seek to reduce impacts from hazards (e.g., earthquake, wildfire, hazardous materials)

# Planning Commission Review Process



- Public Hearing on July 21, 2022, and October 6, 2022, to consider proposed updates to the General Plan Circulation Element and Safety Element
- Planning Commissioners' questions and comments provided via emails and letters, and during the Planning Commission meetings
- Comments and input have been provided by:
  - Las Virgenes Municipal Water District
  - LA County Fire Department
  - City's Public Safety and Public Works Departments
  - CalFIRE
  - Members of the general public
- The revisions presented this evening are only those that were made following the October 6, 2022, meeting

# Updated Circulation Element



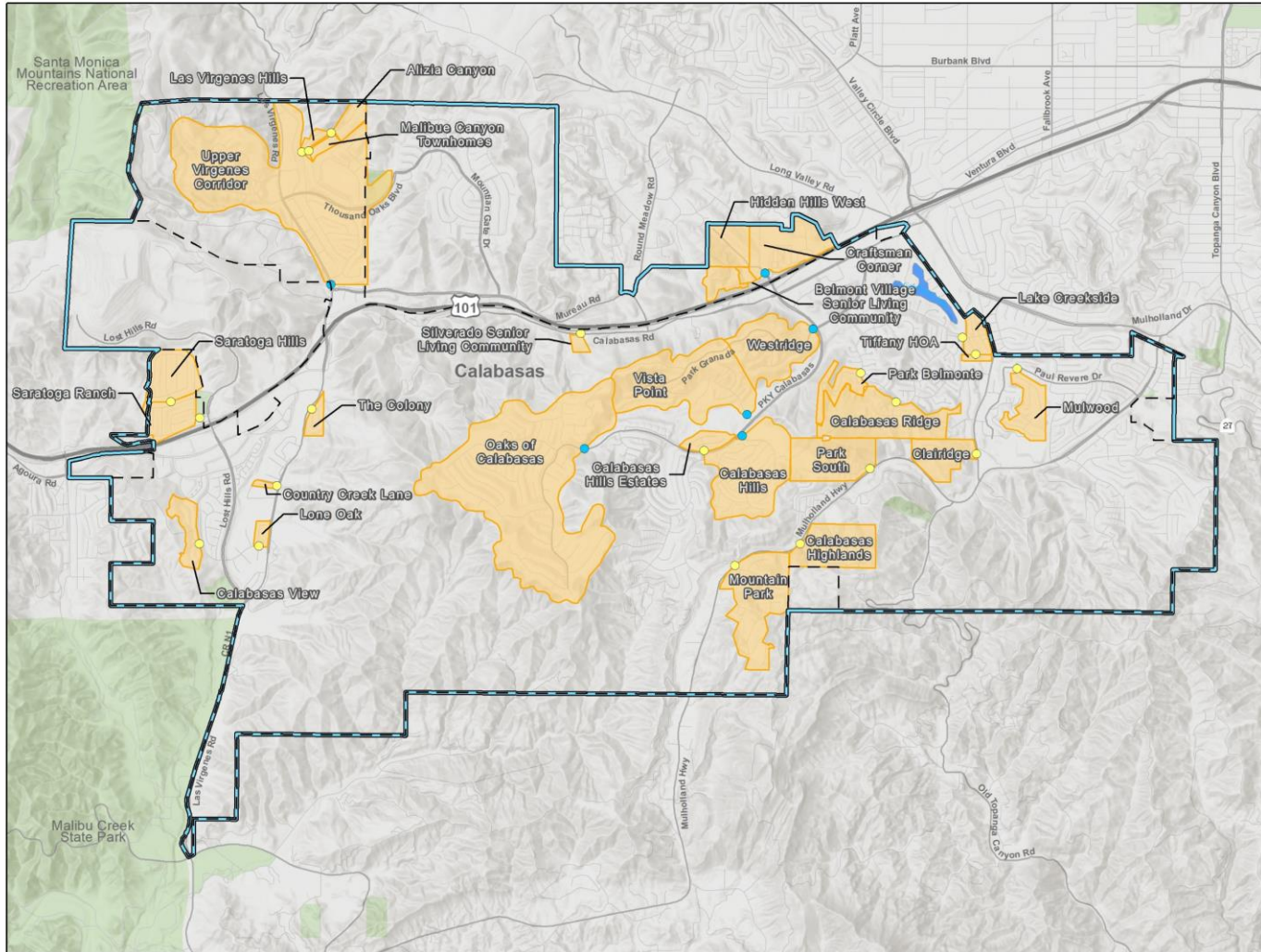
- Added a detailed explanation of how the City intends to continue using LOS, in addition to the new VMT thresholds for traffic impact reviews
- Added that the City plans to prepare a new fee study that could result in new traffic and transportation impacts mitigation fee
- Incorporated examples of how the City can improve operational efficiencies that do not necessitate addition of vehicular lanes
- Directs future updates to the Bicycle Master Plan to consider Class I and Class IV bike lanes.

# Updated Safety Element



- Clarified the full capacity that the Las Virgenes Reservoir can hold
- Revised policy directing the City to coordinate with the Las Virgenes Municipal Water District to ensure the maintenance and long-term integrity of water supply and water pressure for firefighting purposes
- Added senior living facilities and Craftsman Corner to single-access residential neighborhoods map
- Acknowledged that the transportation network could be significantly impacted during an emergency evacuation
- Adjusted Cal-Adapt temperature and extreme heat climate projection data to correspond to hottest area of Calabasas (eastern area)
- Incorporated NOAA weather station historic temperature data

# Wildfire and Critical Facilities Map



- Plan Area
- Calabasas City Limit
- Single Entry and Exit Community
- Single Entry and Exit Routes
- Potentially Singular Entry and Exit Routes \*

\*Potentially Singular Entry and Exit Points are potentially singular due to reliance upon a neighboring community for additional points of access.

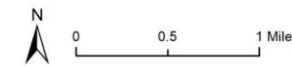


Figure VII-9  
Single-Access Route Residential Neighborhoods

Source: City of Calabasas, 2018, and Rincon Consultants, 2022. Updated February 2022. Basemap provided by ESRI and its licensors © 2022.



# Updated Appendices to the Safety Element



## Emergency Evacuation Assessment Appendix

- Edited to acknowledge the capacity constraints present in the transportation system
- Identified key strategies developed based on the results of the evacuation modeling

## Wildfire Appendix

- Clarified that the purpose of the wildfire risk mapping is intended to help prioritize vegetation management



# Updated Implementation Chapter



- Removed outdated information regarding the Oak Tree Reforestation Fund



- The General Plan Update EIR analyzed updates to the Land Use, Housing, Safety and Circulation Elements.
- Further updates to the Safety and Circulation Elements were made which were analyzed in the Addendum (Exhibit F of the July 21<sup>st</sup> staff report).
- There are no substantial changes or substantially important new information that will cause the project to have significant new impacts or substantially increase previously identified significant impacts.

# Recommended Planning Commission Action and Next Steps



1. Staff recommends that the Planning Commission approve and adopt Planning Commission Resolution No. 2023 – 746, recommending to the City Council approval of the proposed updates to the Calabasas 2030 General Plan Circulation Element, the Calabasas 2030 General Plan Safety Element, and the Calabasas 2030 General Plan “Implementation” chapter, as described in the staff report.
2. Submit Safety Element to CalFIRE
3. Submit Safety Element to State Board of Forestry and Fire Protection.
4. City Council considers adoption of updated Circulation and Safety Elements.



**Thank you for  
your time!**

Questions or comments?

