



RESOURCE

CONSERVATION DISTRICT
OF THE
SANTA MONICA MOUNTAINS

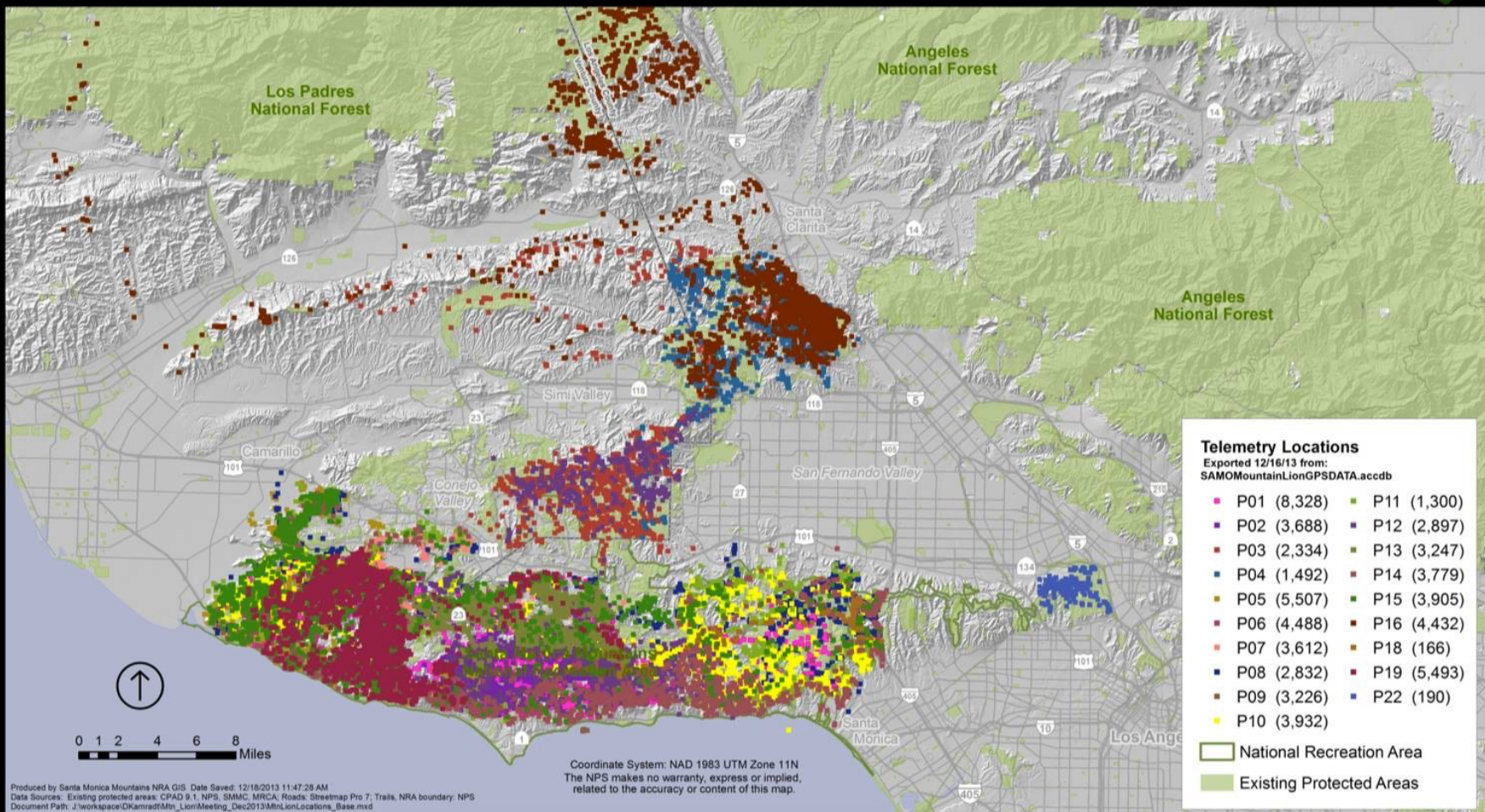
www.rcdsmm.org

The Liberty Canyon Wildlife Passage Project
and the
The Santa Monica – Sierra Madre Mountains Habitat Linkage
presented to City of Calabasas Environmental Commission
Clark Stevens, Architect- Executive Officer, RCDSMM

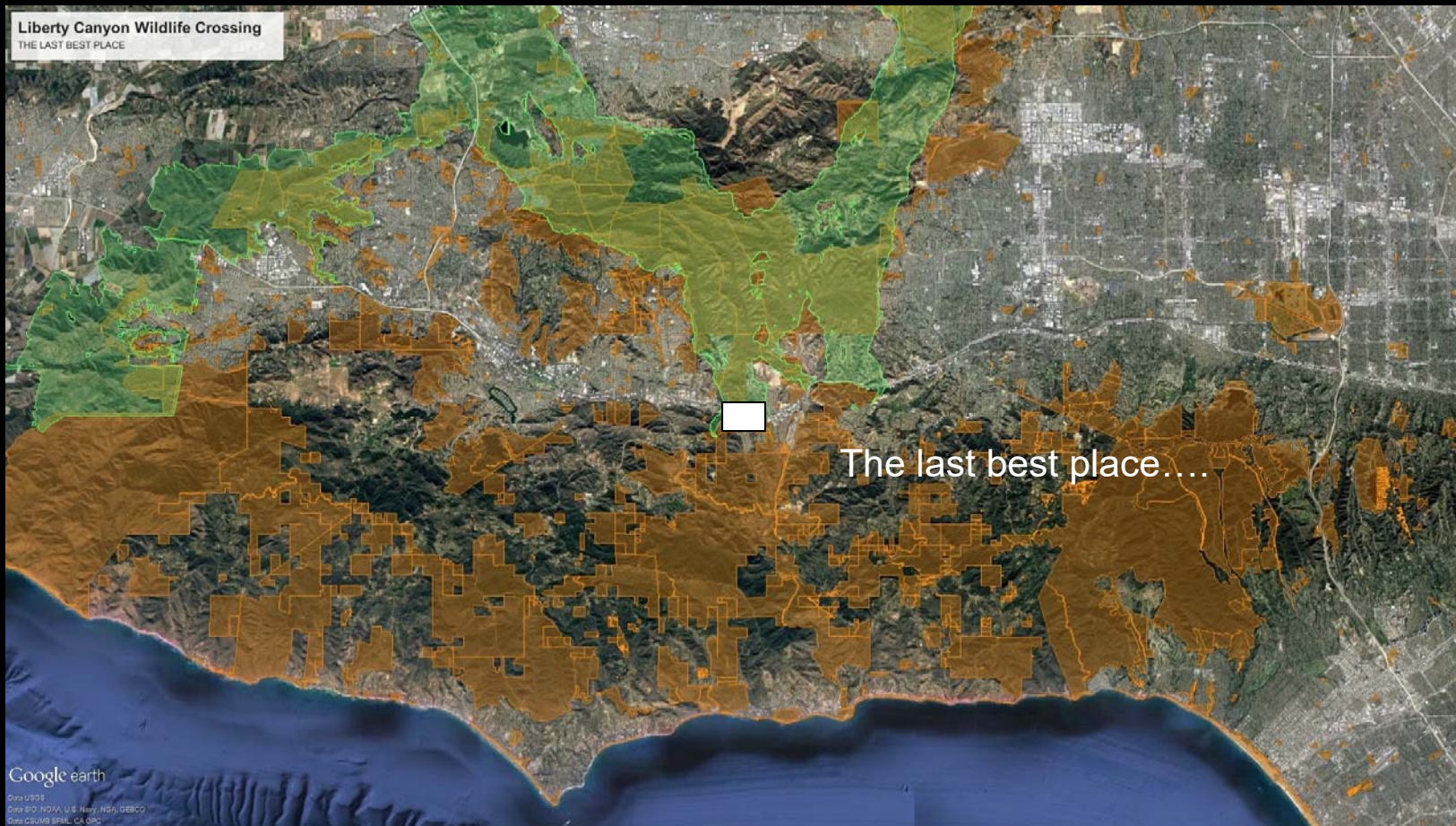
Mountain Lion Locations

Santa Monica Mountains National Recreation Area

National Park Service
U.S. Department of the Interior



Liberty Canyon Wildlife Crossing
THE LAST BEST PLACE



The last best place....

Google earth

Data © 2005
Data S.O. NOAA, U.S. Navy, NGA, GEBCO
Data © 2005 SPIL, CA GBC

Liberty Canyon Wildlife Crossing
THE LAST BEST PLACE



 **RESOURCE**
CONSERVATION DISTRICT
OF THE
SANTA MONICA MOUNTAINS

Google earth



Proposed 101/Agoura Road Wildlife Overcrossing Improvements Area

Proposed tunnel access

Proposed Liberty Canyon Undercrossing Improvements Area

October 2013 Lion Kill Site



RESOURCE
CONSERVATION DISTRICT
OF THE
SANTA MONICA MOUNTAINS

www.rcdsmm.org



RESOURCE
CONSERVATION DISTRICT
OF THE
SANTA MONICA MOUNTAINS

www.rcdsmm.org





SIMI HILLS

SANTA MONICA MOUNTAINS

WILDLIFE HABITAT OVERPASS AT LIBERTY CANYON

101 FREEWAY

AGOURA ROAD

LIBERTY CANYON ROAD



RESOURCE

CONSERVATION SERVICES

SANTA MONICA MOUNTAINS

www.resource.com



SIMI HILLS

Remove Former Development Pad
and Restore Riparian Woodland

SIERRA MADRE MOUNTAINS HERITAGE

Interstate 101

SANTA MONICA MTS

Apoura Road

Liberty Canyon RD

WILDLIFE CROSSING
(AT LIBERTY CANYON)

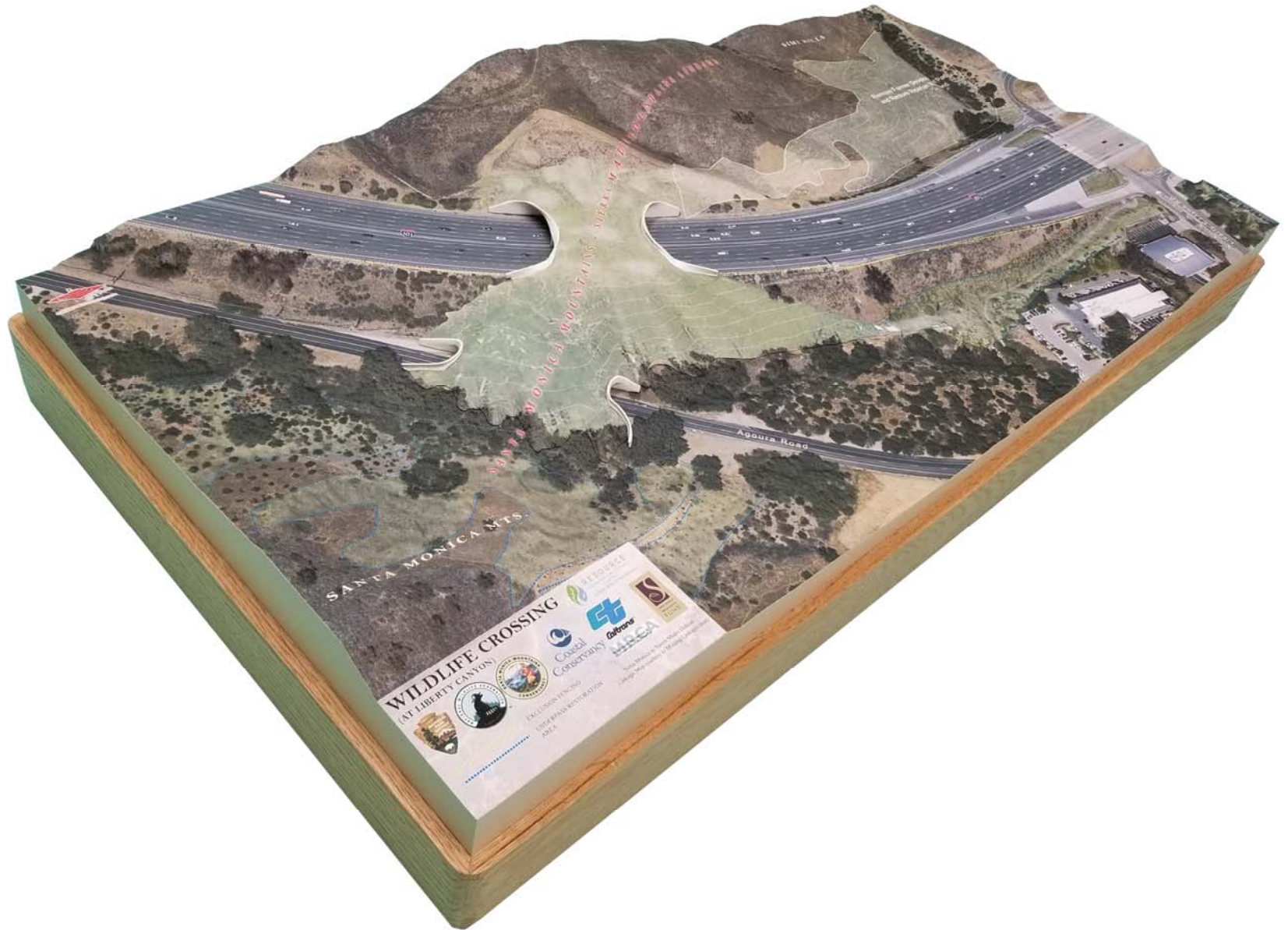
RESOURCE
Conservation & Stewardship

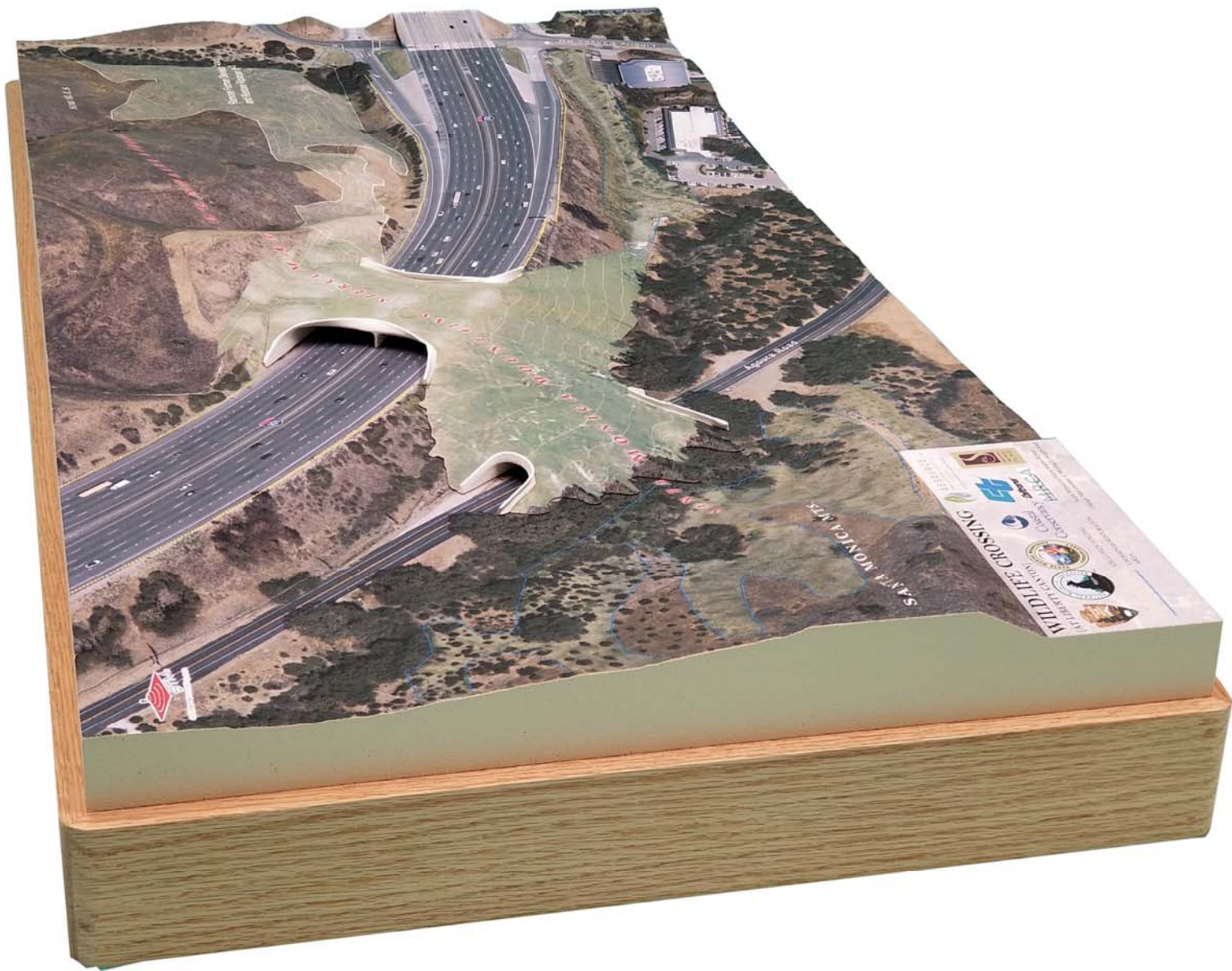
Coastal Conservancy
Caltrans
MRCA
FUND

EXHIBITION FENCING
UNDERPASS BY STRUCTURAL
AREA

Santa Monica to Santa Mader Heritage
Linkage Management of Missing Linkage





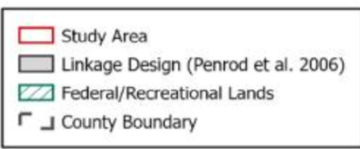
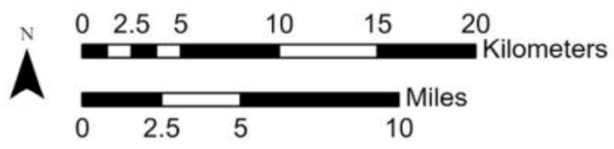
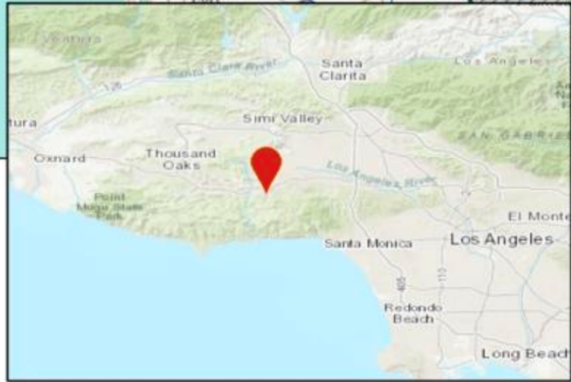
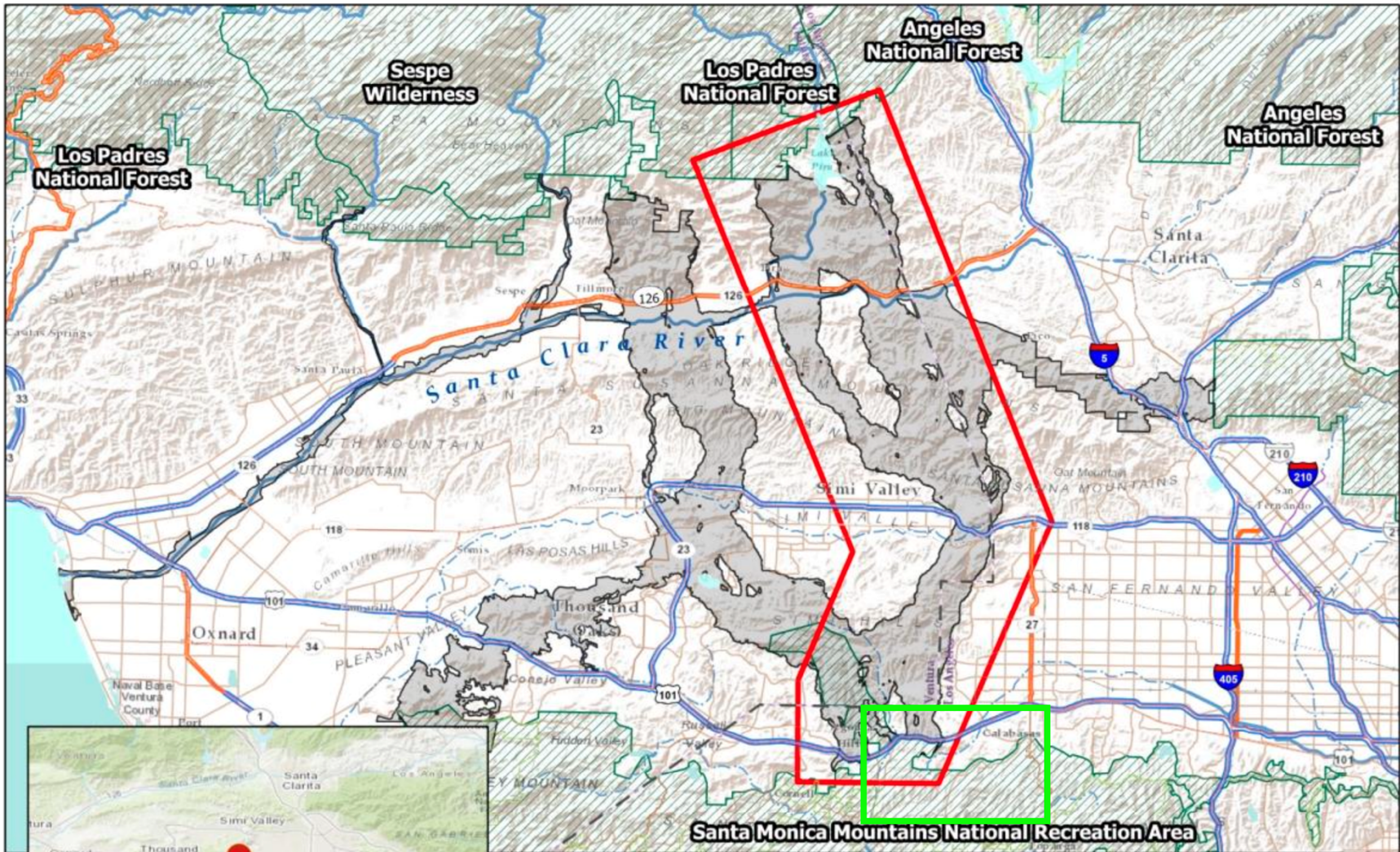




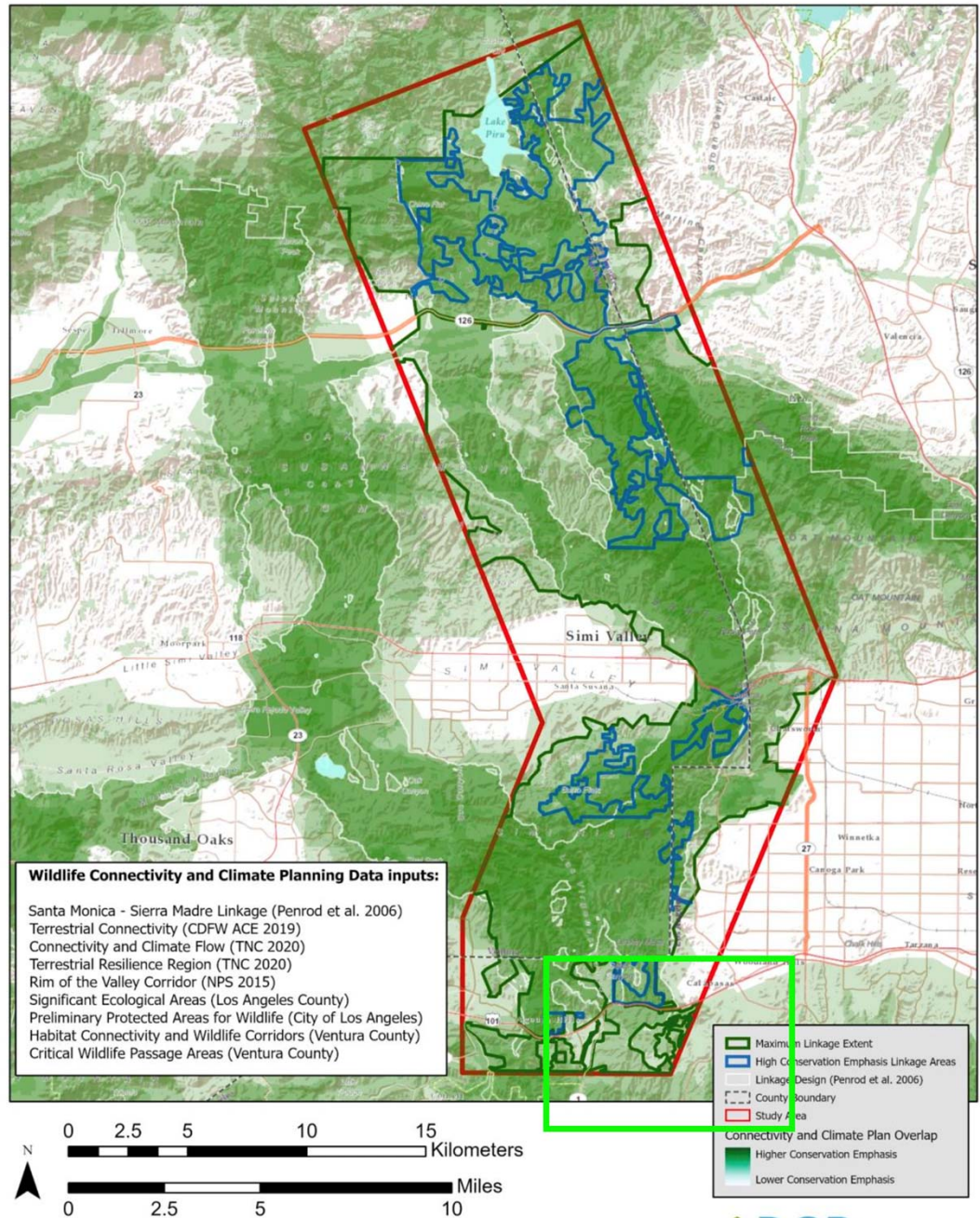








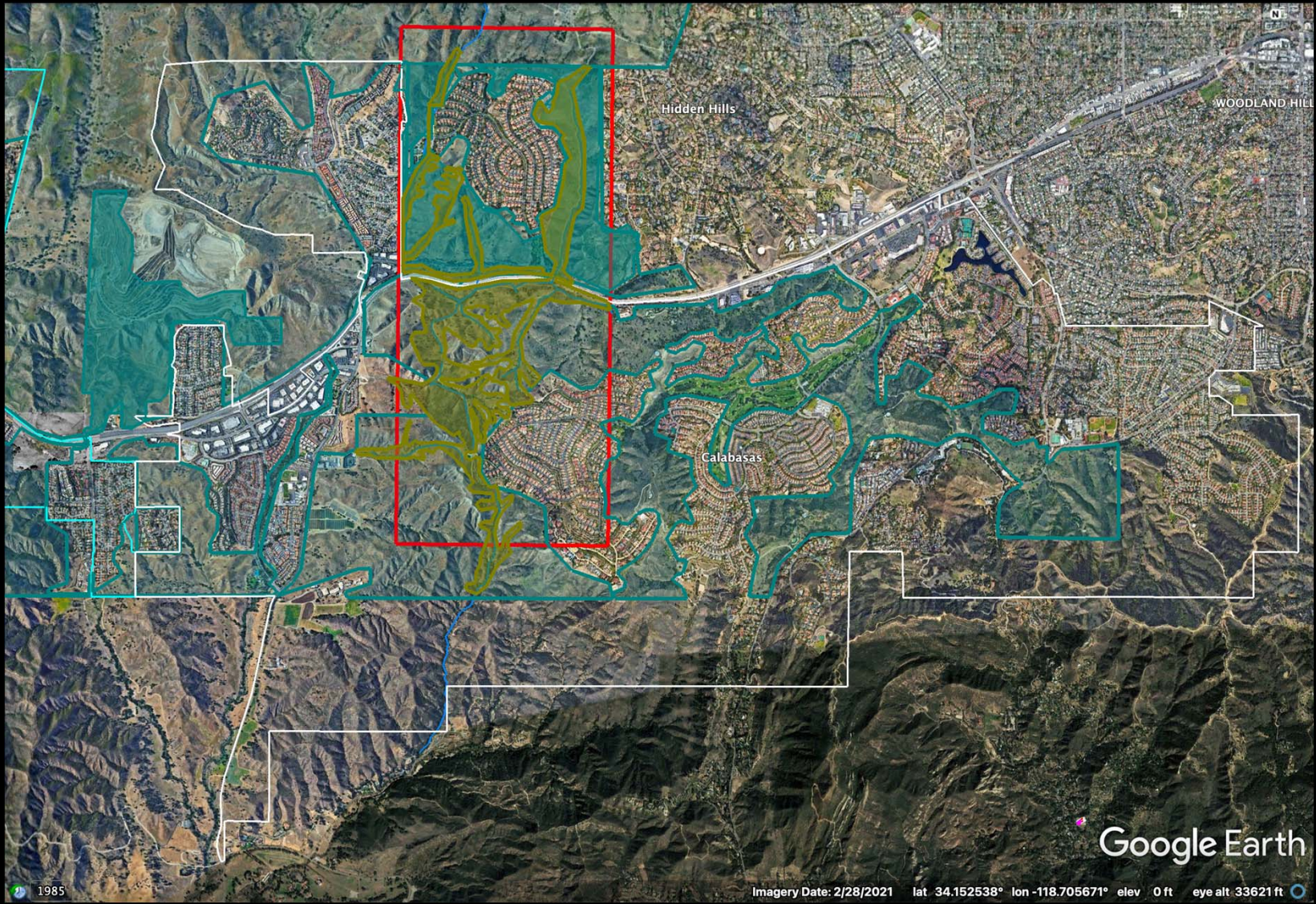
Sources: Esri, HERE, Garmin, Intermap, increment P Corp., GEBCO, USGS, FAO, NPS, NRCAN, GeoBase,



Sources: Esri, USGS, NOAA,

Date Created 12/29/2020

Figure 7. Wildlife Connectivity Prioritization



Hidden Hills

WOODLAND HILL

Calabasas

Google Earth

1985

Imagery Date: 2/28/2021 lat 34.152538° lon -118.705671° elev 0 ft eye alt 33621 ft

