


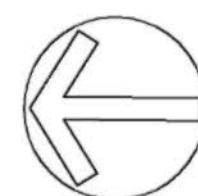


**LEGEND**

-  Multi-use Improved Trail, 6 - 8 feet wide\*
-  Natural (Open Space) Trail, 4 feet wide\*
-  Existing Easement



0 80 160 Feet

\*Trail standards per Calabasas Trails Master Plan, June 20, 2007.

REVISIONS DATE



APPROVED  
design:  
operations:



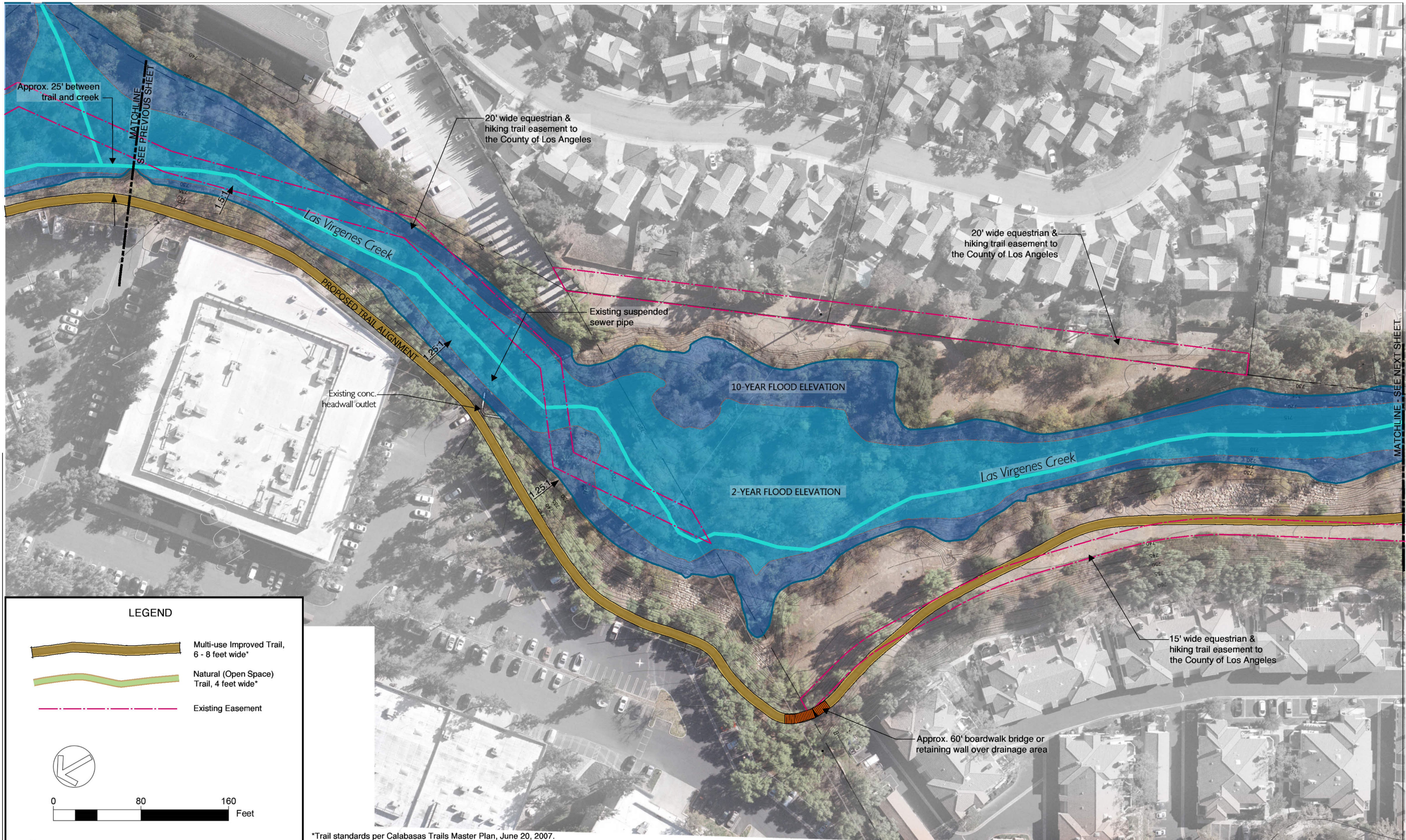
scale: 1" = 40'  
drawn: OR  
checked: —  
date: 8-12-2015

**Proposed Trail Alignment**  
**Las Virgenes Creek Restoration Project - Phase II**  
CALABASAS, CA


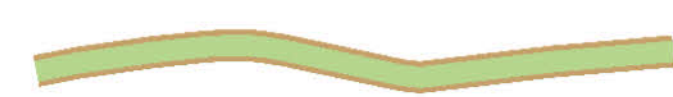

PROJECT NO. 1500058

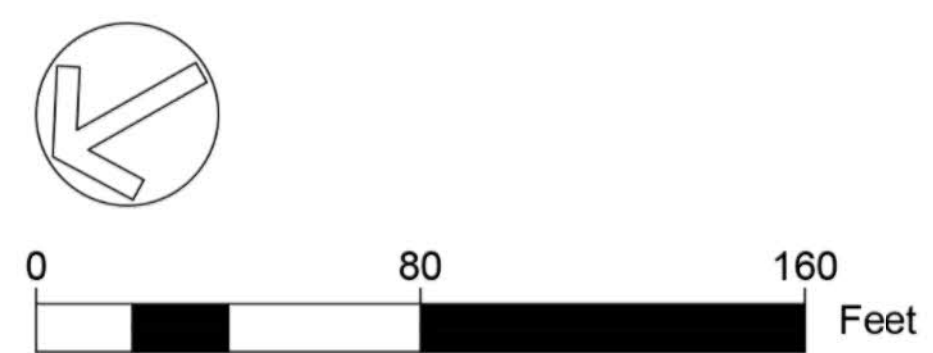
CONTRACT NO.

SHEET NO.  
**1**  
OF : TBD



**LEGEND**

-  Multi-use Improved Trail, 6 - 8 feet wide\*
-  Natural (Open Space) Trail, 4 feet wide\*
-  Existing Easement



\*Trail standards per Calabasas Trails Master Plan, June 20, 2007.

REVISIONS      DATE



APPROVED  
design:  
operations:

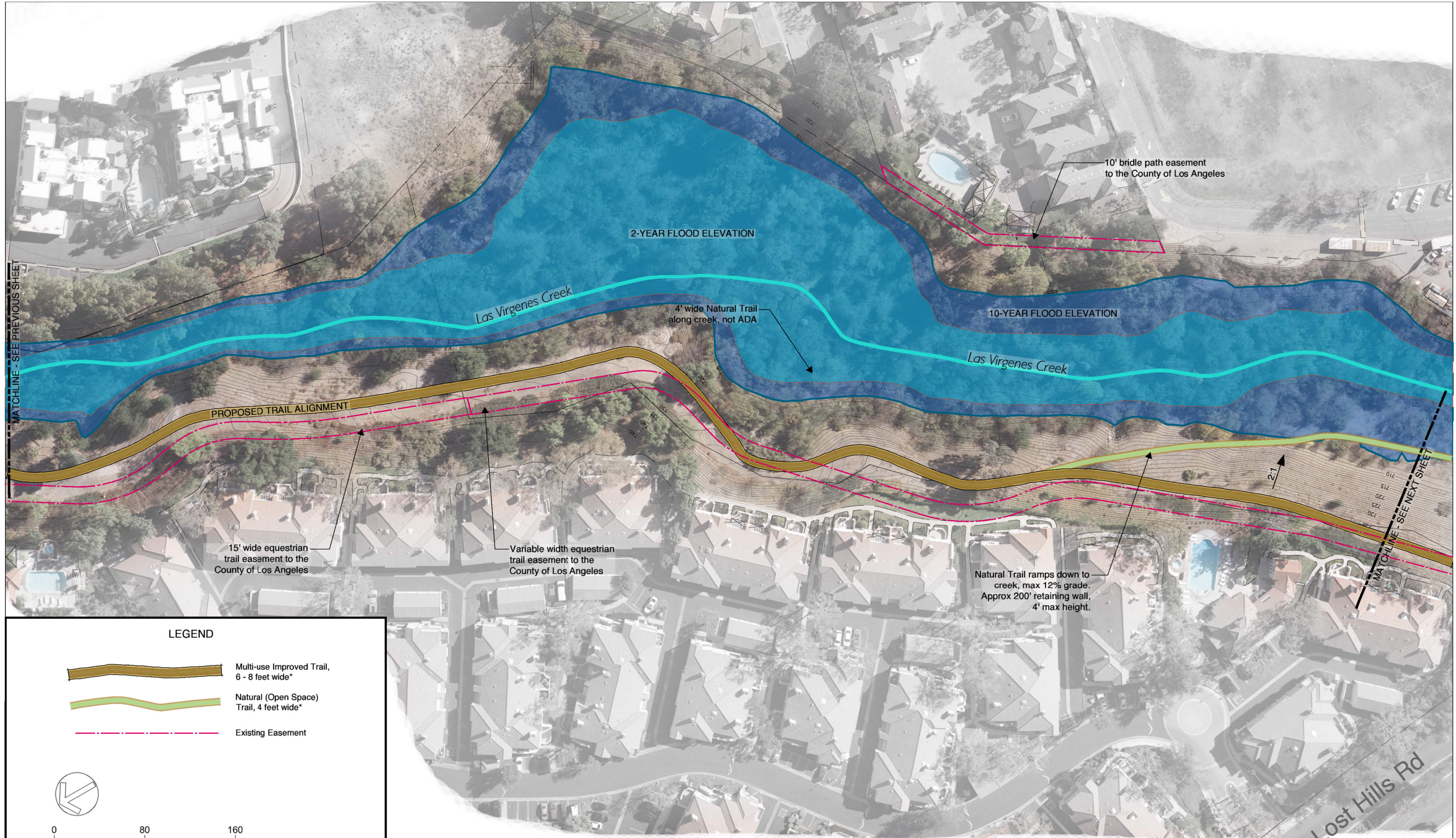


scale: 1" = 40'  
drawn: OR  
checked: \_\_\_  
date: 8-12-2015




**Proposed Trail Alignment**  
**Las Virgenes Creek Restoration Project - Phase II**  
CALABASAS, CA  
PROJECT NO. 1500058

CONTRACT NO.

SHEET NO.  
**2**  
OF : TBD




**LEGEND**

-  Multi-use Improved Trail, 6 - 8 feet wide\*
-  Natural (Open Space) Trail, 4 feet wide\*
-  Existing Easement

0 80 160 Feet

\*Trail standards per Calabasas Trails Master Plan, June 20, 2007.

REVISIONS	DATE
△	
△	
△	
△	

APPROVED  
 design:   
 operations:

scale: 1" = 40'  
 drawn: OR  
 checked: —  
 date: 8-12-2015

**Proposed Trail Alignment**  
**Las Virgenes Creek Restoration Project - Phase II**  
 CALABASAS, CA  
 PROJECT NO. 1500058

CONTRACT NO.

SHEET NO.  
**3**  
 OF : TBD

A.E. Wright Middle School

Las Virgenes Creek

Las Virgenes Creek

10-YEAR FLOOD ELEVATION

2-YEAR FLOOD ELEVATION

Overlook / Educational Area

Approx 80' boardwalk over drainage area

4' wide Natural Trail, not ADA

Approx 150' retaining wall, 4' max height.

Lost Hills Rd

Cold Springs St

Hot Springs Pl

Existing school access bridge

Existing conc. headwall outlet

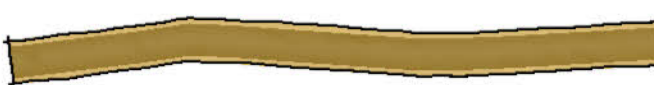
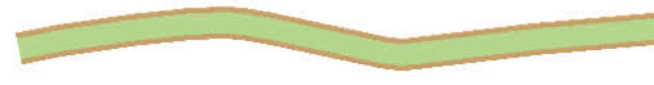


Variable width equestrian trail easement to the County of Los Angeles

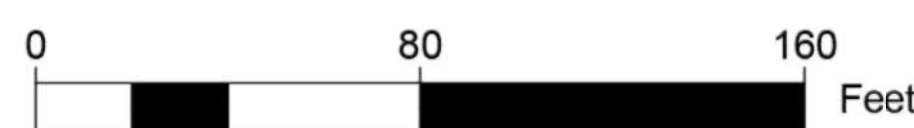
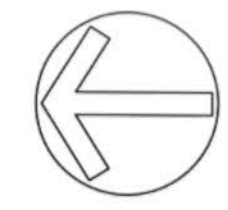
Natural Trail ramps down to creek @ 10% grade. Approx 200' retaining wall, 4' max height.

MATCHLINE - SEE PREVIOUS SHEET

MATCHLINE - SEE NEXT SHEET

LEGEND

-  Multi-use Improved Trail, 6 - 8 feet wide\*
-  Natural (Open Space) Trail, 4 feet wide\*
-  Shoulder along sidewalk
-  Existing Easement



REVISIONS      DATE

APPROVED

design: 

operations:

scale: 1" = 40'

drawn: OR

checked: —

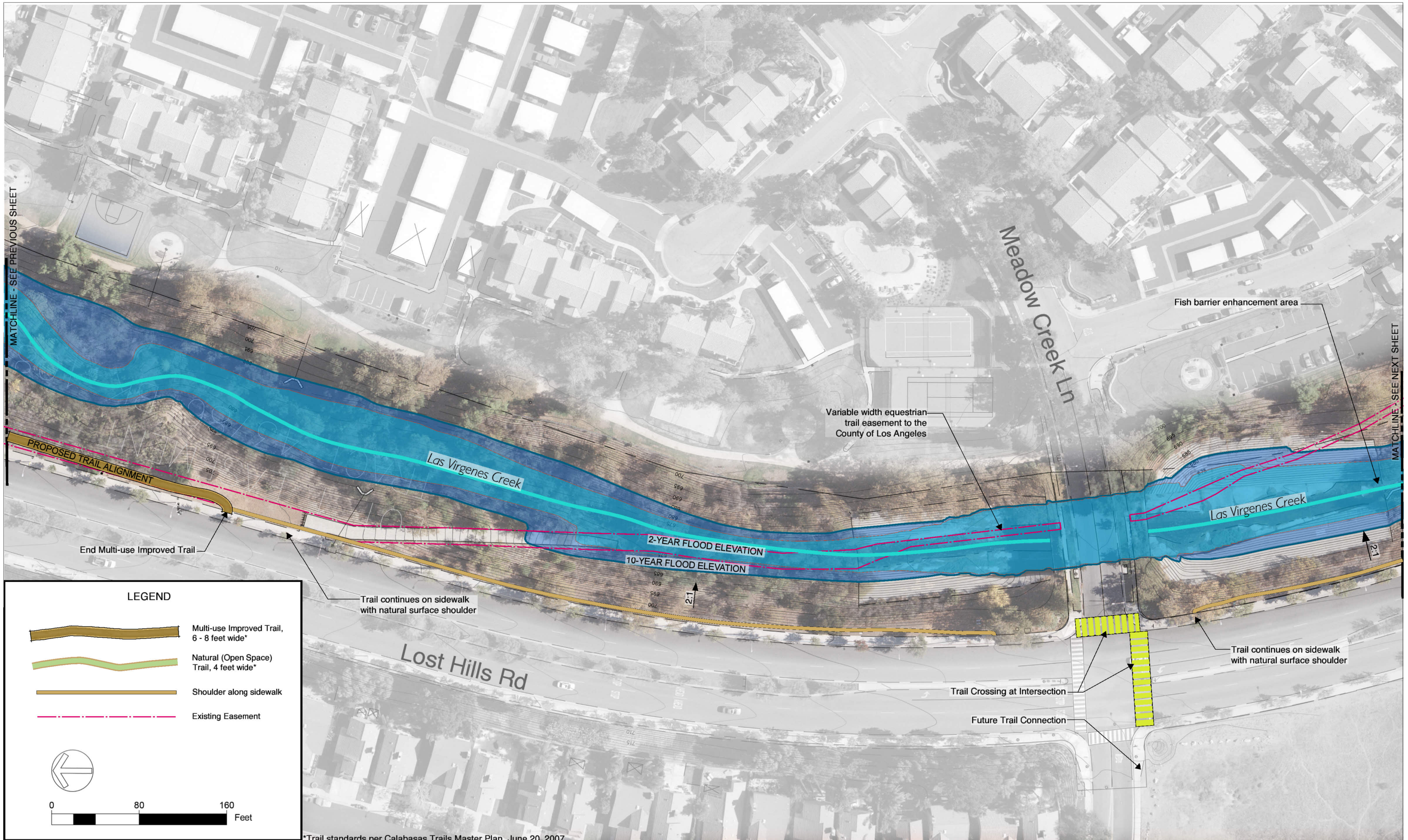
date: 8-12-2015

**Proposed Trail Alignment**  
**Las Virgenes Creek Restoration Project - Phase II**  
 CALABASAS, CA  
 PROJECT NO. 1500058


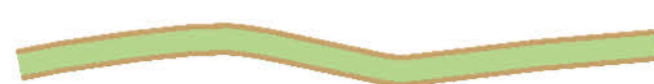


CONTRACT NO.

SHEET NO.  
**4**  
 OF : TBD





**LEGEND**

-  Multi-use Improved Trail, 6 - 8 feet wide\*
-  Natural (Open Space) Trail, 4 feet wide\*
-  Shoulder along sidewalk
-  Existing Easement

0 80 160 Feet

\*Trail standards per Calabasas Trails Master Plan, June 20, 2007.

REVISIONS	DATE
▲	
▲	
▲	
▲	

APPROVED: 

design: \_\_\_\_\_

operations: \_\_\_\_\_

scale: 1" = 40'

drawn: OR

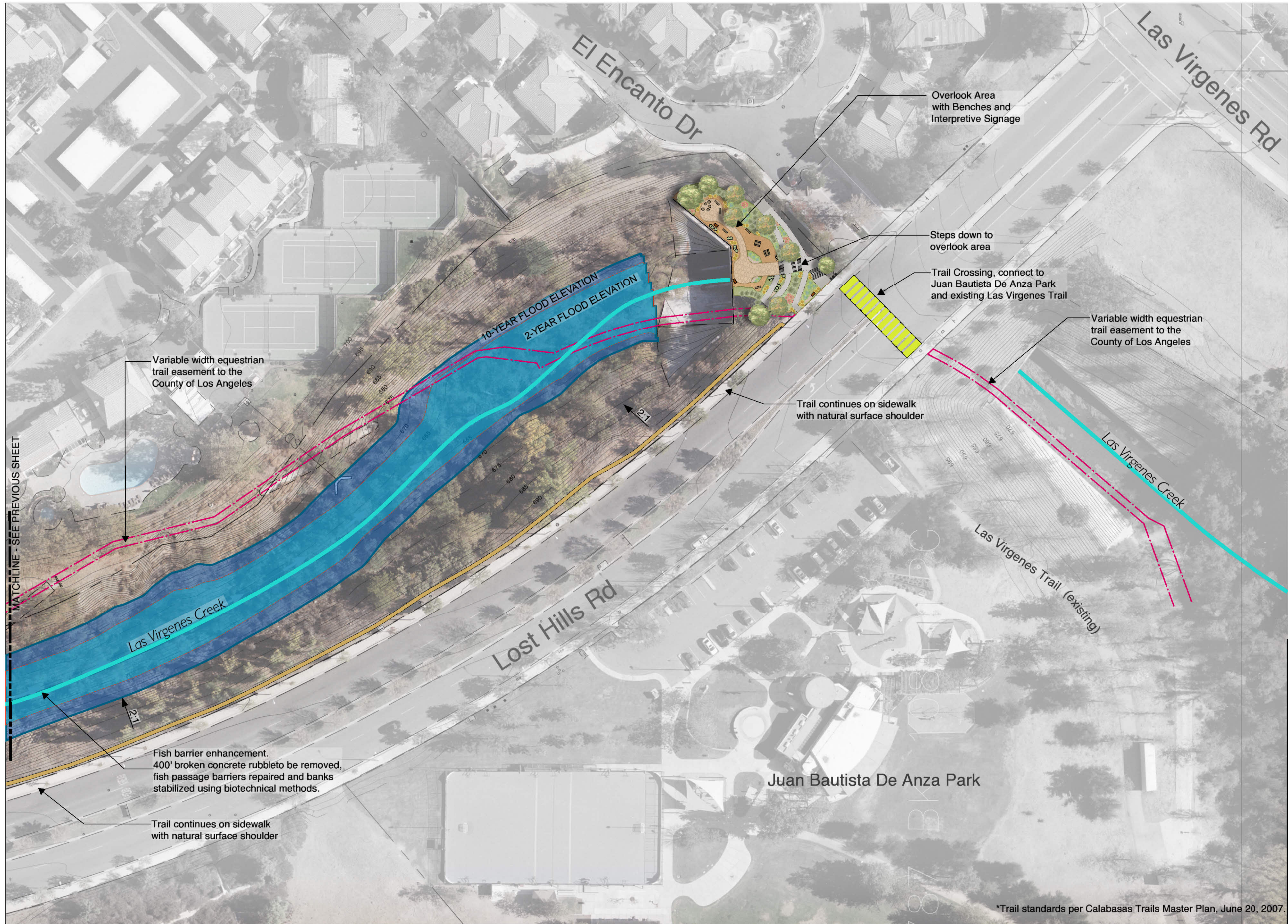
checked: \_\_\_\_\_

date: 8-12-2015





**Proposed Trail Alignment**  
**Las Virgenes Creek Restoration Project - Phase II**  
 CALABASAS, CA  
 PROJECT NO. 1500058


CONTRACT NO.


SHEET NO.  
**5**  
 OF : TBD



**LEGEND**

-  Multi-use Improved Trail, 6 - 8 feet wide\*
-  Natural (Open Space) Trail, 4 feet wide\*
-  Shoulder along sidewalk
-  Existing Easement



 0 80 160 Feet

\*Trail standards per Calabasas Trails Master Plan, June 20, 2007.

▲  
▲  
▲  
▲

REVISIONS	DATE

APPROVED  
design:  
operations:



scale: 1" = 40'  
drawn: OR  
checked: —  
date: 8-12-2015

**Proposed Trail Alignment**  
Las Virgenes Creek Restoration Project - Phase II  
CALABASAS, CA  
PROJECT NO. 1500058

CONTRACT NO.

SHEET NO.  
**6**  
OF : TBD