



CITY *of* CALABASAS

## City's Water Conservation Efforts

# Drought Related Projects

- Smart Irrigation Controller System
  - 2014: 58 pre-existing controllers were replaced with 52 weather based evapotranspiration smart controllers at City parks and all City maintained landscape areas
  - 2015/2016: The reclaimed irrigation system was expanded and low flow sprinkler heads and nozzles were installed
- The project reduced reclaimed water usage by approximately 35%



# Drought Related Projects

- Green Street Policy
  - Implementation of this policy includes the installation of native & drought landscape, better stormwater management and water infiltration areas
  - Existing green elements are located on Valmar Road, Malibu Hills Road & Park Sorrento
  - These medians also serve to act as bioretention basins which hold rain water and allow it to percolate into the ground water
  - Future green elements are being designed for Calabasas Rd, Las Virgenes Rd & Mureau Rd
- In 2021, the City reduced water by 15% at all parks and medians in July and again in October to support the State Emergency Declaration by Governor Newsom



# LVWMD Water Restrictions As of June 1

- Potable Water
  - Potable water is a term used to describe drinking water. It is the water that flows from your tap that is used for drinking, cooking, cleaning, and bathing. Potable water is clean, healthy, and safe.
  - Restricted to one day a week for 8 minutes maximum per station except for high-efficiency nozzles can run for 15 minutes
- Recycled Water
  - Recycled water is recovered from wastewater through an extensive treatment process
  - During the hot summer months Per Dave Pedersen (LVMWD General Manager), up to a 9% blend of potable water in the recycled water system can be expected.
  - Allowed and not subject to one day per week or run-time restrictions except water cannot run off from landscaped areas and usage must stay within water budget to avoid penalties.



# Compliance with Water District Restrictions

## Irrigation

- All potable water areas of landscape have been reduced from five (5) days for 12 minutes to one (1) day a week for 8 minutes.
  - Thousand Oaks Blvd. Turf & Planters
  - Pocket Park Turf & Planters
  - Highland Park Slope
  - Freedom Park Turf & Planters
  - Mulholland Hwy Turf & Planters
  - Park Sorrento Turf & Planters
- All reclaim water areas have been reduced from five (5) days to three (3) days a week for 10 minutes
  - All CBA's
  - Association Park
  - Tennis & Swim Center
  - De Anza Park
  - Grape Arbor Park
  - Gates Canyon Park
  - Las Virgenes Road
  - Lost Hills Road
  - Agoura Road
  - Calabasas Hills Road
  - Meadow Creek Ln.
  - Lost Hills On/Off Ramps
  - Parkway Calabasas On/Off Ramps



# Efforts Implemented by the City

- Temporary closure of the splash pad at De Anza Park
- Temporary closure of water feature at Gates Canyon Park
- Civic Center Site water fountains will be temporarily turned off and City Hall urinals will be switched to waterless
- Power washing of park amenities will be reduced
- Landscape transition to native-drought tolerant plants at Tennis and Swim and Civic Center Site areas
- Perennial flowers will be replaced with native-drought tolerant plants at City properties and Common Benefit Areas



CITY of CALABASAS



**Due to ongoing severe drought conditions the City has temporarily shut down this fountain to conserve water. Be water wise.**



# Sustainability Task Force Recommendations

- The Sustainability Task Force provided direction to transition from turf to drought tolerant landscaping in City parks, medians, and parkways
- Only **non-functional park areas** irrigated with potable water are subject to the restrictions set by LVMWD ( 1 Day a Week for 8 min)
- The trees located in these areas will continue to be watered as needed

## City Median & Parkway Areas to Transition:

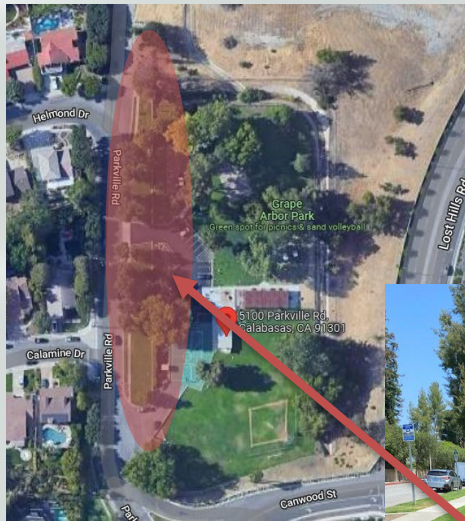
- Thousand Oaks Blvd (6,100 sf)
- Mulholland Hwy (16,100 sf)
- Las Virgenes Rd (3,400 sf)
- Park Capri (2,000 sf)
- Park Granada (13,000 sf)



# Sustainability Task Force Recommendations

## Non-Functional Park Areas to Transition:

- Grape Arbor Park (11,000 sf)
- Gates Canyon Park (14,800 sf)





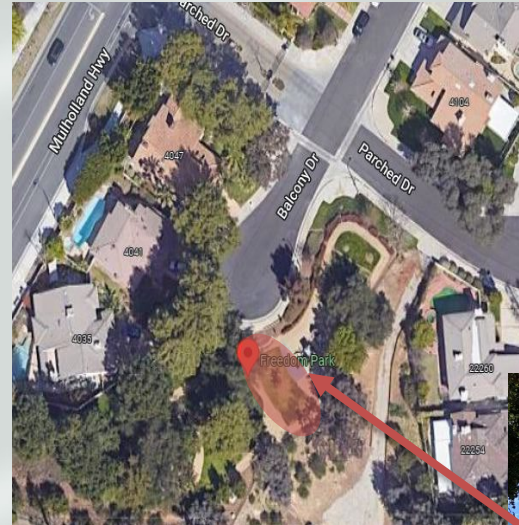
# Sustainability Task Force Recommendations

## Non Functional Park Areas to Transition:

- De Anza Park (15,000 sf)

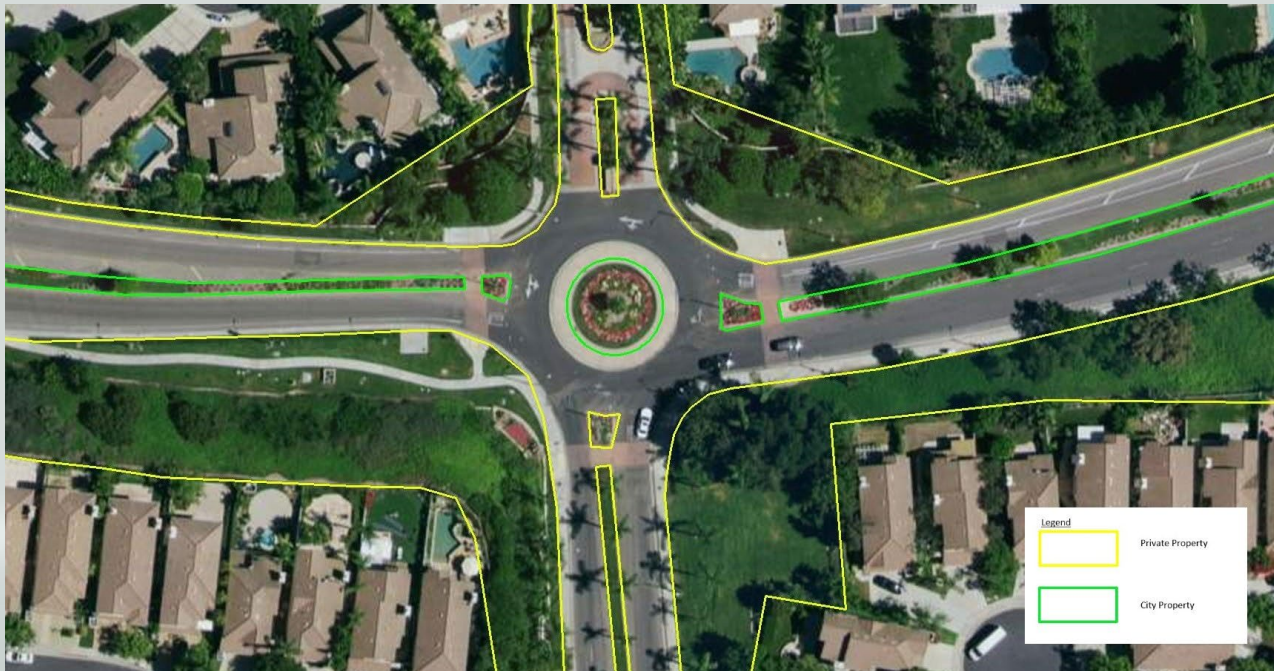


- Freedom Park (4,000 sf)



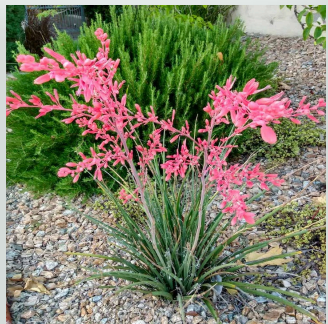
# City Property & Private Property Ownership

- The City manages special assessment areas through the LMD (Landscape Maintenance District) and LLAD (Landscape Lighting Act District)
- Below is an example of an area with both City and private properties:



# Sustainability Task Force Discussion Points

- Transition the reclaim areas in the LMD and LLAD from three (3) days to two (2) days a week per LVMWD conservation measures
- Begin discussion with HOA's regarding the transition from turf areas to native-drought tolerant landscaping using a plant palette provided by the City
- Sample plant palette to include:



Red Yucca



California Primrose



Lantana



Agave



Senecio



Calandrinia

\*Palette subject to change based on availability



# Turf Removal and Drought Tolerant Planting Cost Estimate

## Estimated Unit Prices

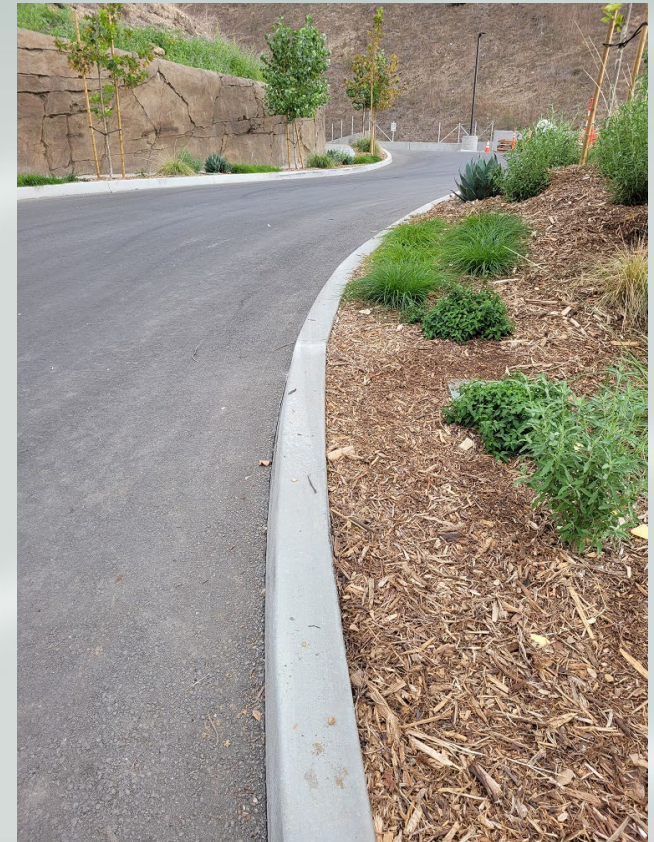
- Turf Removal \$3.90 per sf
- Planting \$4.65 per sf

Total \$8.55 per sf

## Example Thousand Oaks Blvd (6,100 SF)

- Turf removal \$23,790
- Planting \$28,365

Total cost is \$52,155



# Water Savings at City Park, Medians, and Parkways

## City Median & Parkway (40,600sf)

- Estimated total sprinkler heads to be closed: 933
- Total savings:
  - 36,964 gallons per year of reclaimed water
    - 1 unit = 748 gallons = \$1.34 for reclaimed water
  - 36,036 gallons per year of potable water
    - 1 unit = 748 gallons = \$3.94 for potable water
- Yearly Cost savings \$256.03

## Non-Functional Park Areas (44,800sf)

- Estimated total sprinkler heads to be closed: 140
- Total water savings: 201,600 gallons per year of reclaimed water
- Yearly Cost Savings \$361.15



# New Logo for City Landscape Areas

- The Communications Department has made the new logo for the City landscape areas that may be transitioned to drought tolerant plants
- The new logo is available to download off the City website for residents to make their own yard signs
- Also the QR code will open to the LVMWD website for the most current information on the drought



# Options for City Council to Consider

## City Owned Landscape

- Discontinue irrigation of all potable water areas in City medians, parkways (Thousand Oaks Blvd and Mullholland Hwy) and City Parks (Freedom Park and Pocket Park)
- Move forward with the transition of turf areas with reclaimed irrigation in City parkways, medians and parks in phases
- Proceed with reduction of reclaim water to two (2) days a week in all of the City's parkways, medians and parks

## HOA Owned Landscape

- Begin working with Homeowner Associations within the Assessment Districts to reduce reclaim water usage up to 50% by watering two (2) days a week



# Thank You

- **Questions**
- **Comments**
- **Recommendations**

