

CALABASAS

AND THE

SAFE, CLEAN WATER PROGRAM



**SAFE
CLEAN
WATER**

Presented by:

Upper Los Angeles River
Watershed Coordinator

February 1, 2022





What is the Safe, Clean, Water Program?

The Safe, Clean, Water Program (SCWP) was established with the passage of Measure W in 2018 by voters in Los Angeles County.

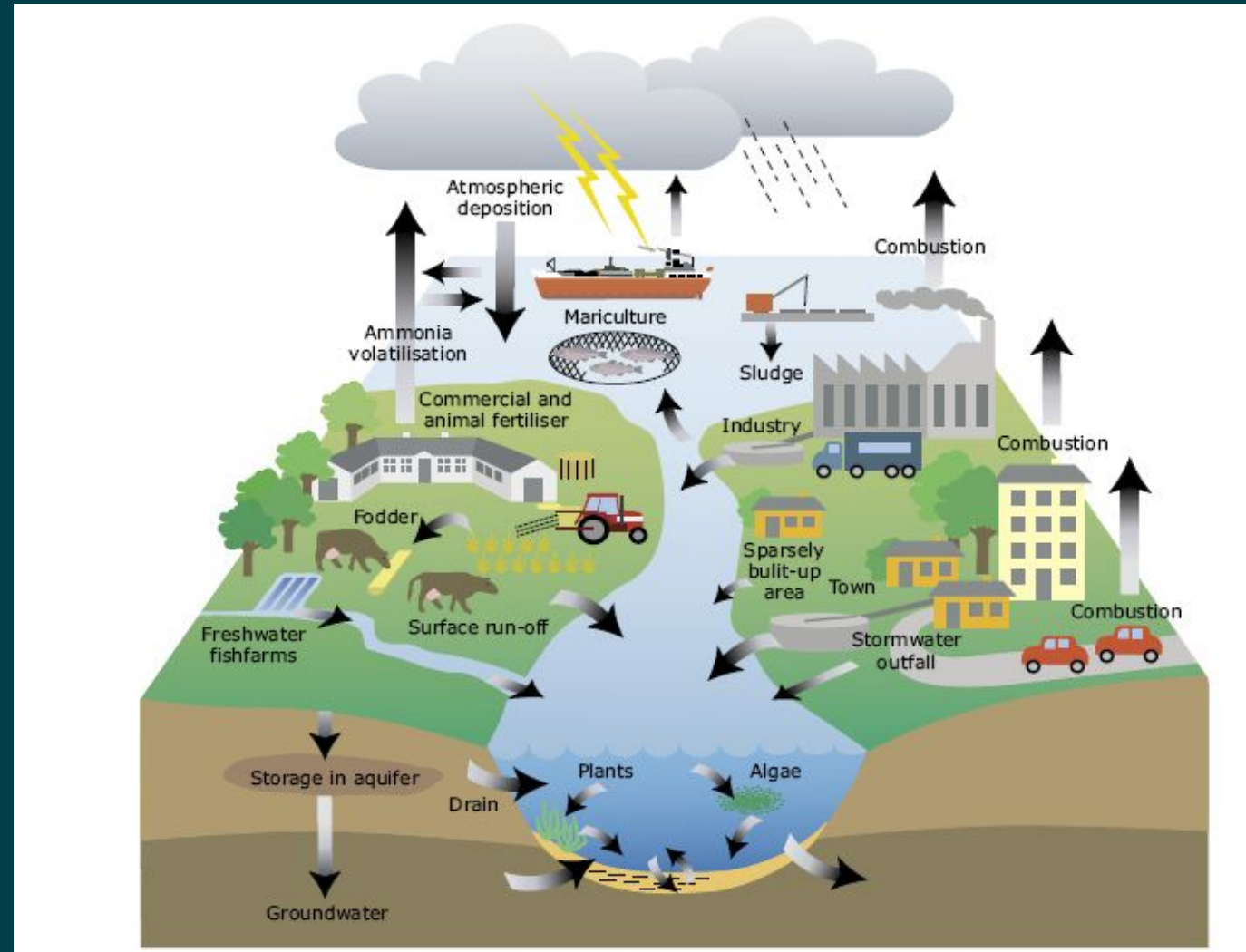
The SCWP provides local, dedicated funding to increase our local water supply, improve water quality, and protect public health.

Clean Water Act (CWA)

The Clean Water Act (CWA) establishes the basic structure for regulating discharges of pollutants into the waters of the US and regulating quality standards for surface waters.

<https://www.epa.gov/laws-regulations/summary-clean-water-act>

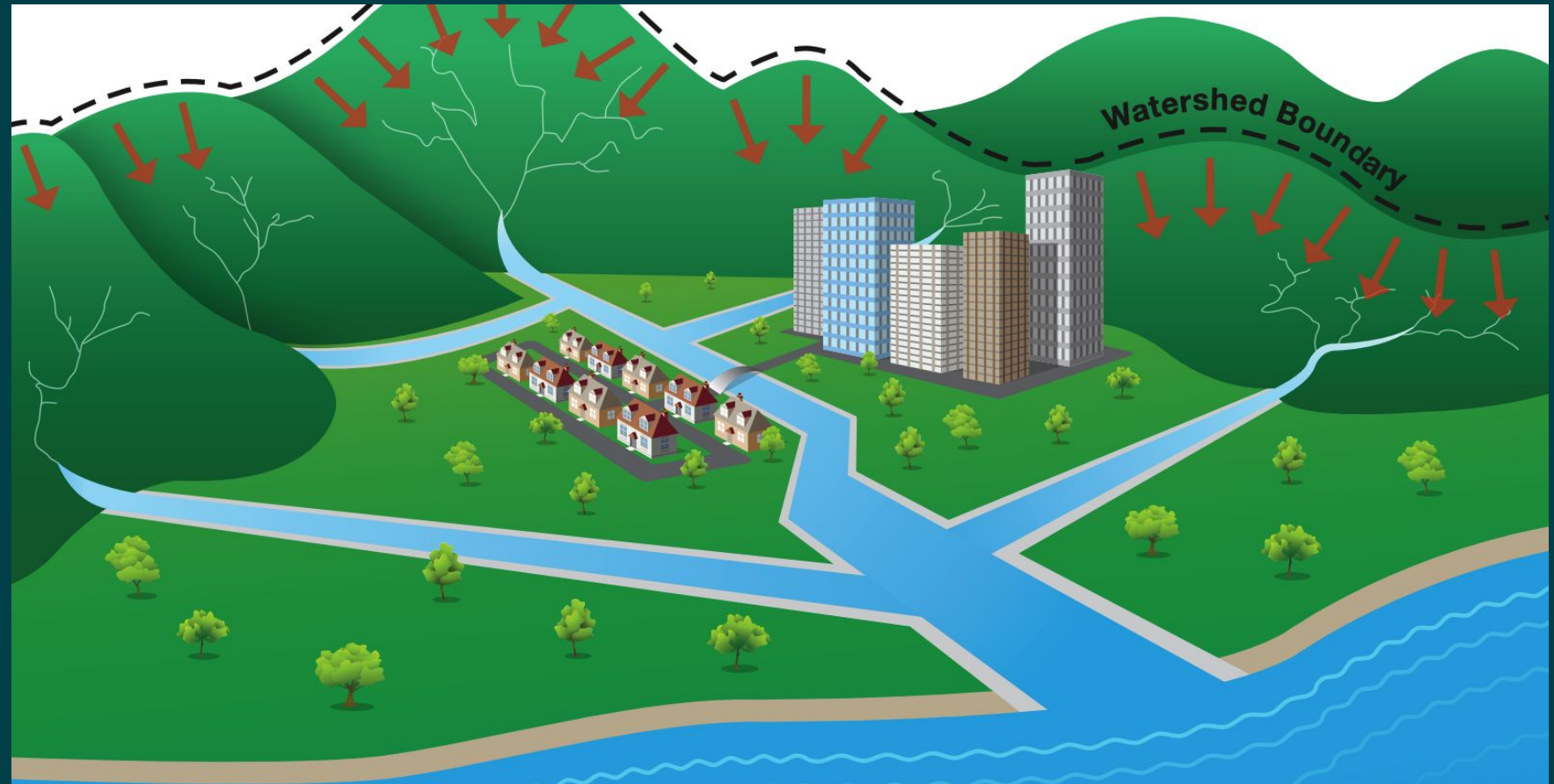
Overview of the aquatic nitrogen cycle and sources of pollution with nitrogen



https://www.eea.europa.eu/archived/archived-content-water-topic/water-pollution/figures-and-maps/sources-of-pollution/image_view_fullscreen

What is a Watershed?

A watershed is the area of land where water collects and drains into a specific river, ocean, lake, or other body of water.

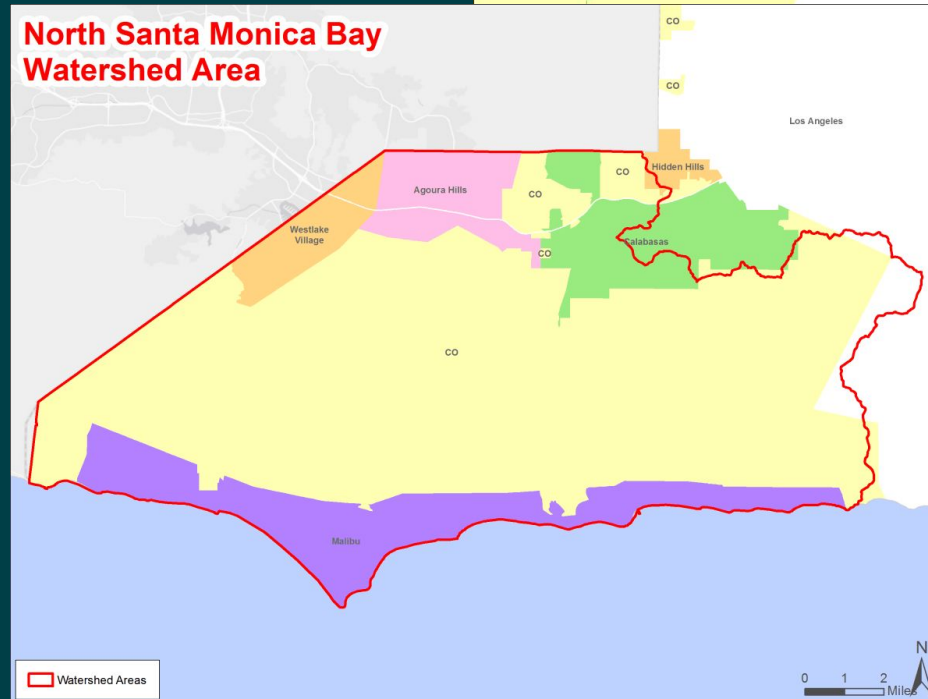


Which Watershed is Calabasas in?

The City of Calabasas lies within both the Upper Los Angeles River watershed and the North Santa Monica Bay watershed.



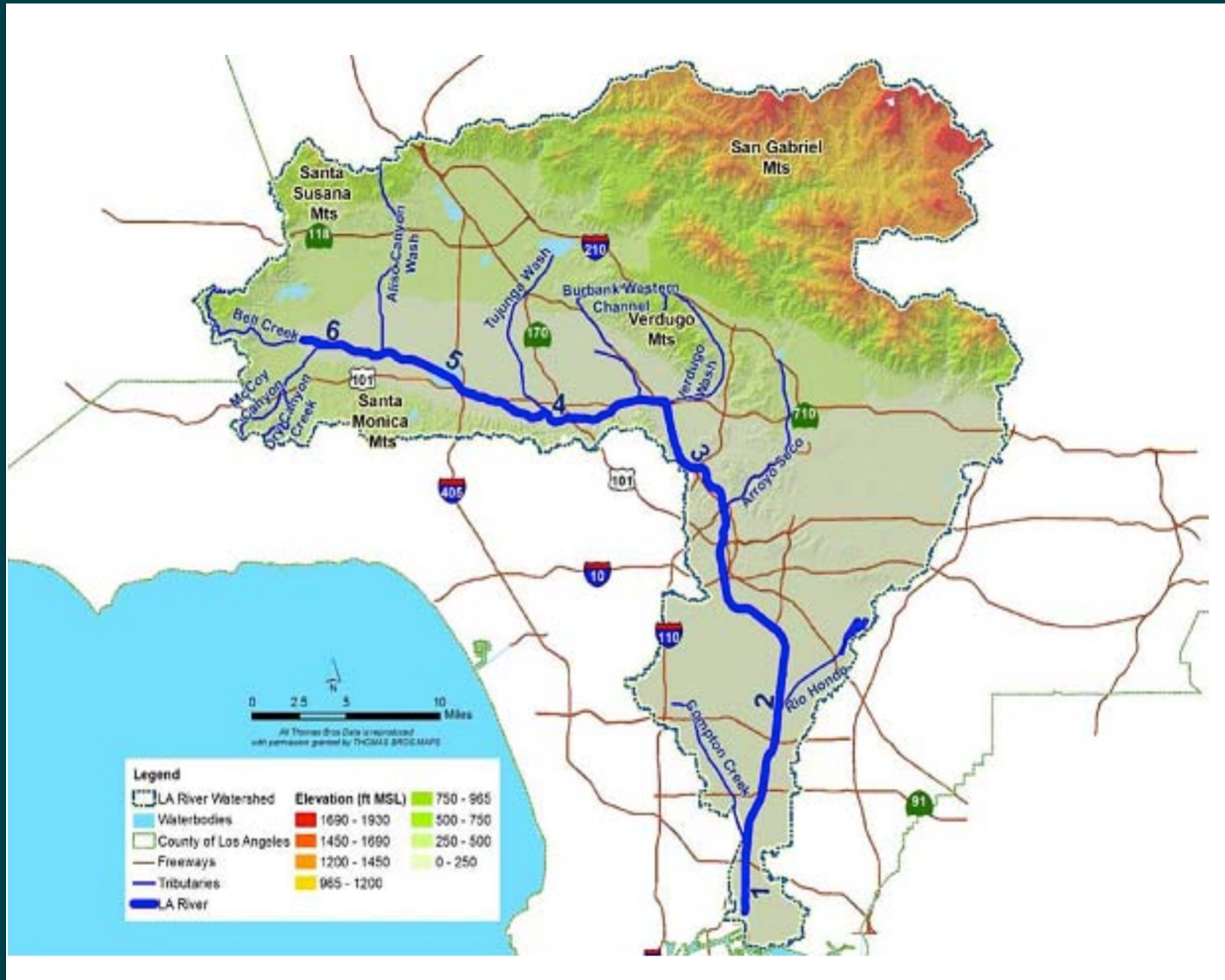
<https://safecleanwaterla.org/upper-los-angeles-river-watershed-area/>



<https://safecleanwaterla.org/north-santa-monica-bay-watershed-area/>



Topography of the LA River



The Upper LA River Watershed Area begins in Calabasas.

Benefits of the Safe, Clean Water Program

Improved Water Quality

Every day in LA – and especially when it rains – trash and contaminants pollute our waterways and ocean. Paved-over and flood-prone communities are especially at risk of exposure to contaminants found in stormwater runoff. It’s also the reason why beaches are closed during heavy rains. This Program will provide funding to help us capture and clean stormwater, reducing the risk that dirty, polluted runoff poses to our communities and the marine life that call our region home.



Benefits of the Safe, Clean Water Program



Increased Local Water Supply

Every year, we lose billions of gallons of rainwater to the ocean. Capturing this water can greatly increase the county's local water supply and make the entire region more sustainable for decades to come. This Program will help fund stormwater projects across the county, using a combination of nature, science, and new technology, that could triple the amount of rainfall we currently capture.

Benefits of the Safe, Clean Water Program

Community Enhancements

The neighborhoods with the most pavement are the most vulnerable to the negative health effects of extreme heat. The Safe, Clean Water Program will invest in our communities by greening schools, creating parks and wetlands; improving flood management; and increasing public access to rivers, lakes and streams.



Role of the Watershed Coordinator



There are nine watersheds in Los Angeles County with 12 Watershed Coordinators selected to help our local watersheds achieve the goals set forth by the Safe, Clean, Water Program.

1

Solicit & Support New Projects

Identify parties with project ideas & connect them with the Technical Resources Program

2

Community Engagement

Gather input on community needs that SCW projects can help fulfill

3

Public Education

Educate the public about SCWP projects in their communities
+
Inform community members about how they can voice their input



HOW WE CAN SUPPORT YOU:

- Guide you in developing your project concept
- Help identify a public agency to “own” the project
- Guide you in applying to the Technical Resources Program
- Provide guidance on effectively engaging the community with your project concept
- Help identify cost-share partners

INFRASTRUCTURE PROGRAM PROJECT EXAMPLE

Merced Avenue Greenway

A multi-benefit green street with active transportation, connection to public green space, and a water quality treatment train.

FUNDED IN: 2021

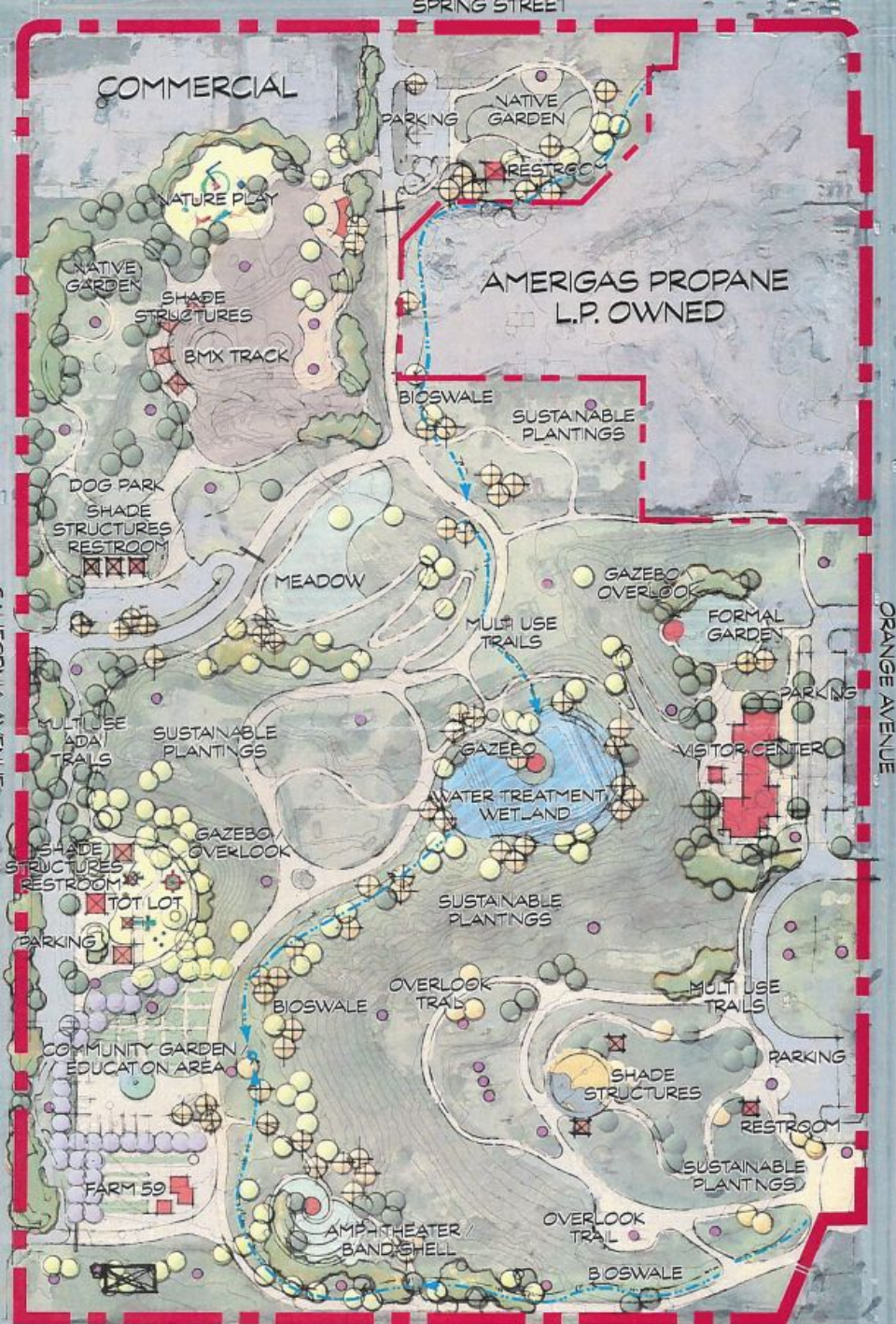
PROJECT LEAD: City of South El Monte

**PROJECT PARTNERS: Active SGV, Climate Resolve,
Council for Watershed Health**

PROJECT FEATURES:

- Bioswales, stormwater planters, and permeable pavement
- Protected bike lanes
- Heavily incorporated community input
- Serves underserved community





TRP PROJECT EXAMPLE WILLOW SPRINGS PARK IN LONG BEACH

A feasibility study was required to determine whether the existing park could have new wetlands developed.

FUNDED IN: 2020

PROJECT LEAD: City of Long Beach

WATERSHED: Lower LA River

PROJECT FEATURES:

- Creation of 1 acre of wetlands
- New trails
- Bioswales, water retention basin, and a constructed spring
- New native plants and canopy cover
- Outdoor learning opportunities



TRP PROJECT EXAMPLE

PARQUE DOS RIOS BIOSWALE IN SOUTH GATE

Proposes replacing a concrete-lined drainage v-ditch with a bioretention/bioswale system. This new engineering design requires a feasibility study.

FUNDED IN: 2020

PROJECT LEAD: Watershed Conservation Authority

WATERSHED: Lower LA River

PROJECT CHARACTERISTICS:

- Incorporates Nature-Based Solutions
- Was a project site identified by LA County and Rivers and Mountains Conservancy
- V-ditch is owned by Caltrans

INFRASTRUCTURE PROGRAM PROJECT EXAMPLE URBAN ORCHARD IN SOUTH GATE

A multi-benefit park project with an integrated dry weather runoff treatment facility.

FUNDED IN: 2021

AMOUNT: \$5,438,000 (Construction + O&M)

PROJECT LEAD: City of South Gate

WATERSHED: Lower LA River

PROJECT FEATURES:

- Wetland with infiltration gallery
- Educational garden and food orchard
- Nature-based playground honoring Tongva history
- Multi-use paths and community building
- Heavily incorporated community input
- Serves disadvantaged communities

URBAN ORCHARD - PHASE 1 SITE PLAN / HUERTA URBANA - PLAN DE SITIO FASE 1



INFRASTRUCTURE PROJECT EXAMPLE

BASSETT HIGH SCHOOL MULTI-BENEFIT STORMWATER CAPTURE PROJECT

A multi-benefit stormwater capture project located at Bassett High School in La Puente.

FUNDED IN: 2020

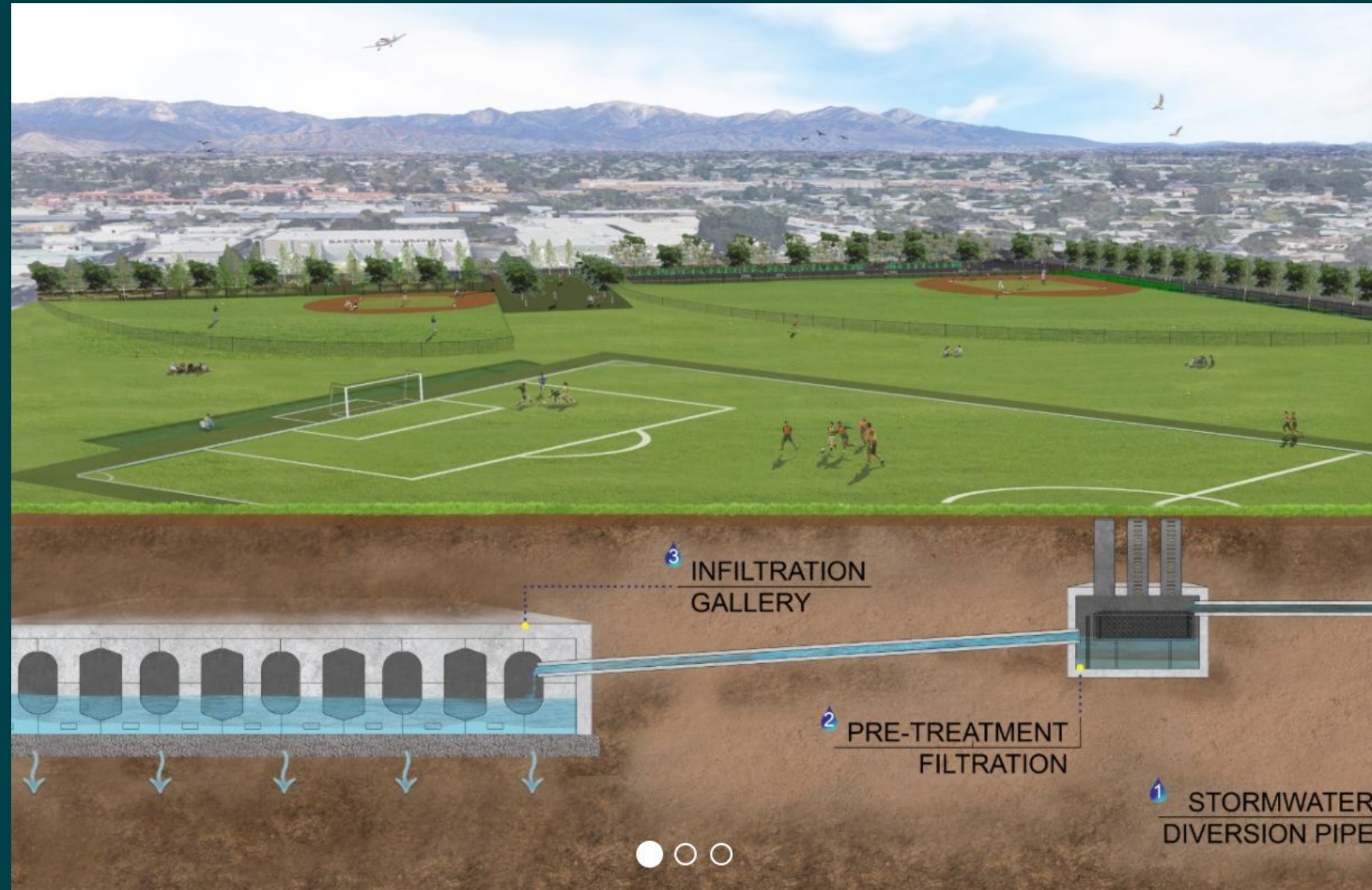
AMOUNT: \$31.2 Million (Design & Construction)

PROJECT LEAD: LA County

WATERSHED: Upper San Gabriel River

PROJECT FEATURES:

- Infiltration gallery beneath baseball field
- Captures water and recharge groundwater aquifer
- Creates new parkspace and tree canopy
- Provides school greening benefits
- Improves an athletic field
- Signage providing educational information

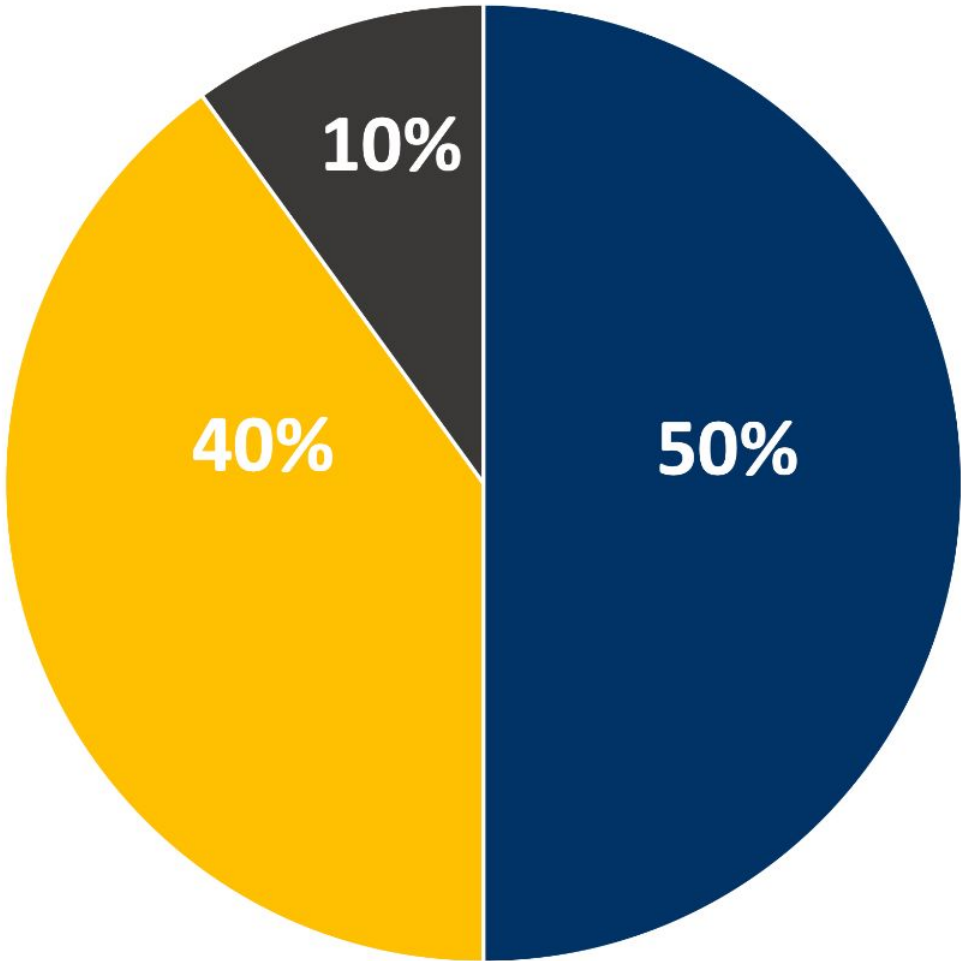


Water Quality Solutions

Liberty Canyon
Project 1: Los
Angeles County
Department of
Public Works



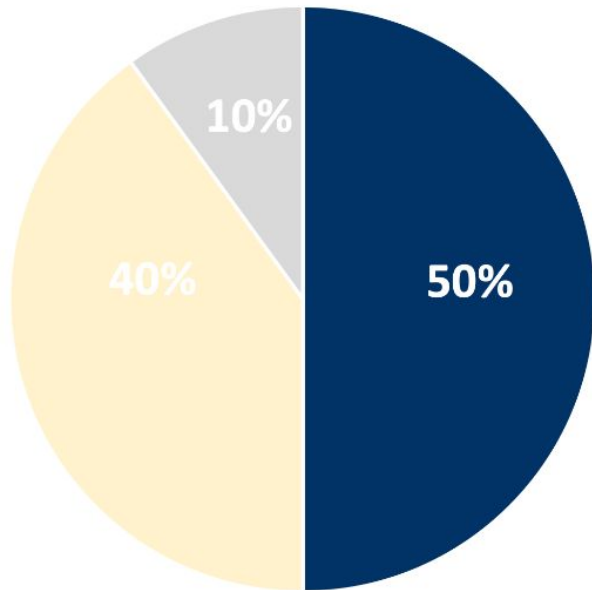
Safe, Clean Water Program Fund Allocation



- Regional Program
(50% = ~\$140.6M billed)
- Municipal Program
(40% = ~\$112.6M billed)
- FCD Program
(10% = ~\$27.8M billed)

Total Program
(100% = ~\$281M billed)

Regional Program

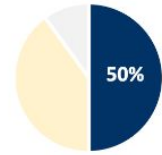


50% Program revenue

Provides funding for Multi-Benefit Watershed-based Projects

| WATERSHED AREA | ANNUAL RETURN |
|--------------------------|----------------|
| Central Santa Monica Bay | \$17.4 Million |
| Lower Los Angeles River | \$12.7 Million |
| Lower San Gabriel River | \$16.5 Million |
| North Santa Monica Bay | \$1.8 Million |
| Rio Hondo | \$11.5 Million |
| Santa Clara River | \$5.9 Million |
| South Santa Monica Bay | \$17.6 Million |
| Upper Los Angeles River | \$38.4 Million |
| Upper San Gabriel River | \$18.8 Million |

Regional Program - Scientific Studies Program

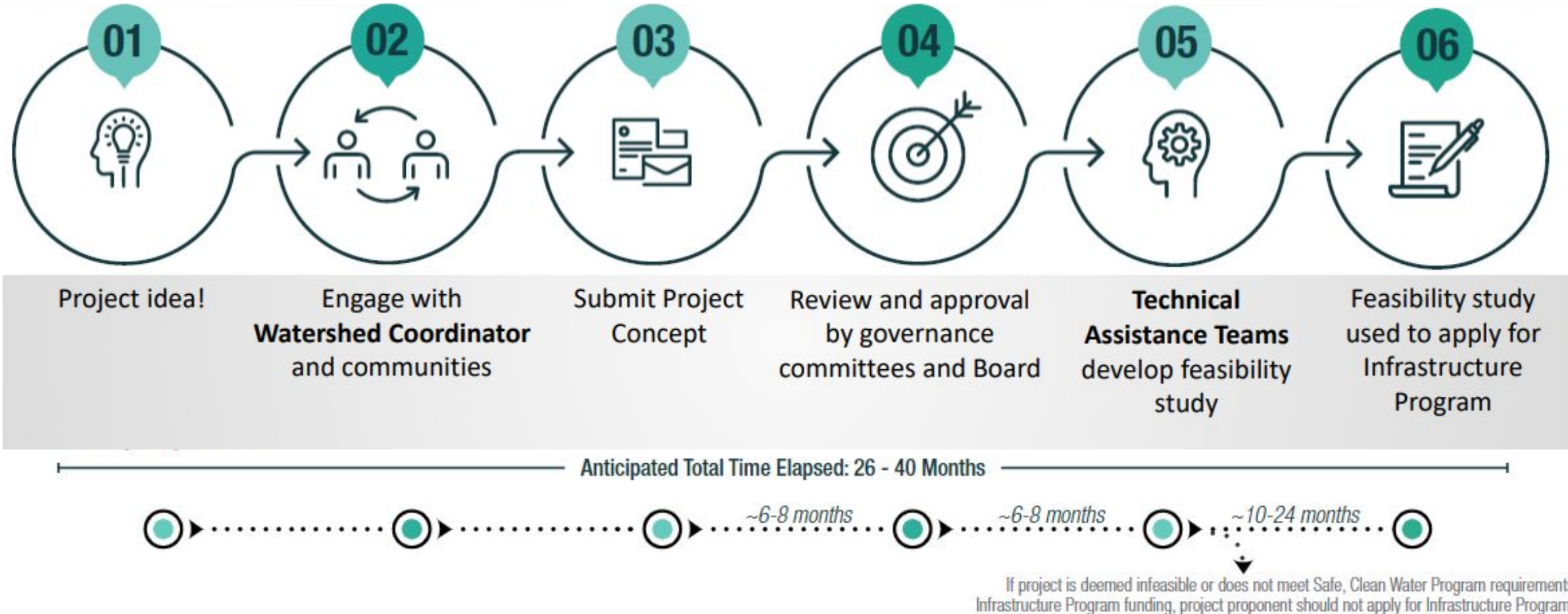


- **Watershed Area Steering Committees select activities/Projects**
- **The District will administer the Scientific Studies Program**

Scientific Studies Program

- To provide funding for eligible scientific and other activities, such as but not limited to:
 - Scientific studies
 - Monitoring
 - Modeling
 - Other similar activities
- Must be related to stormwater and urban runoff capture and pollution reduction

Technical Resources



Regional Program - Infrastructure Program



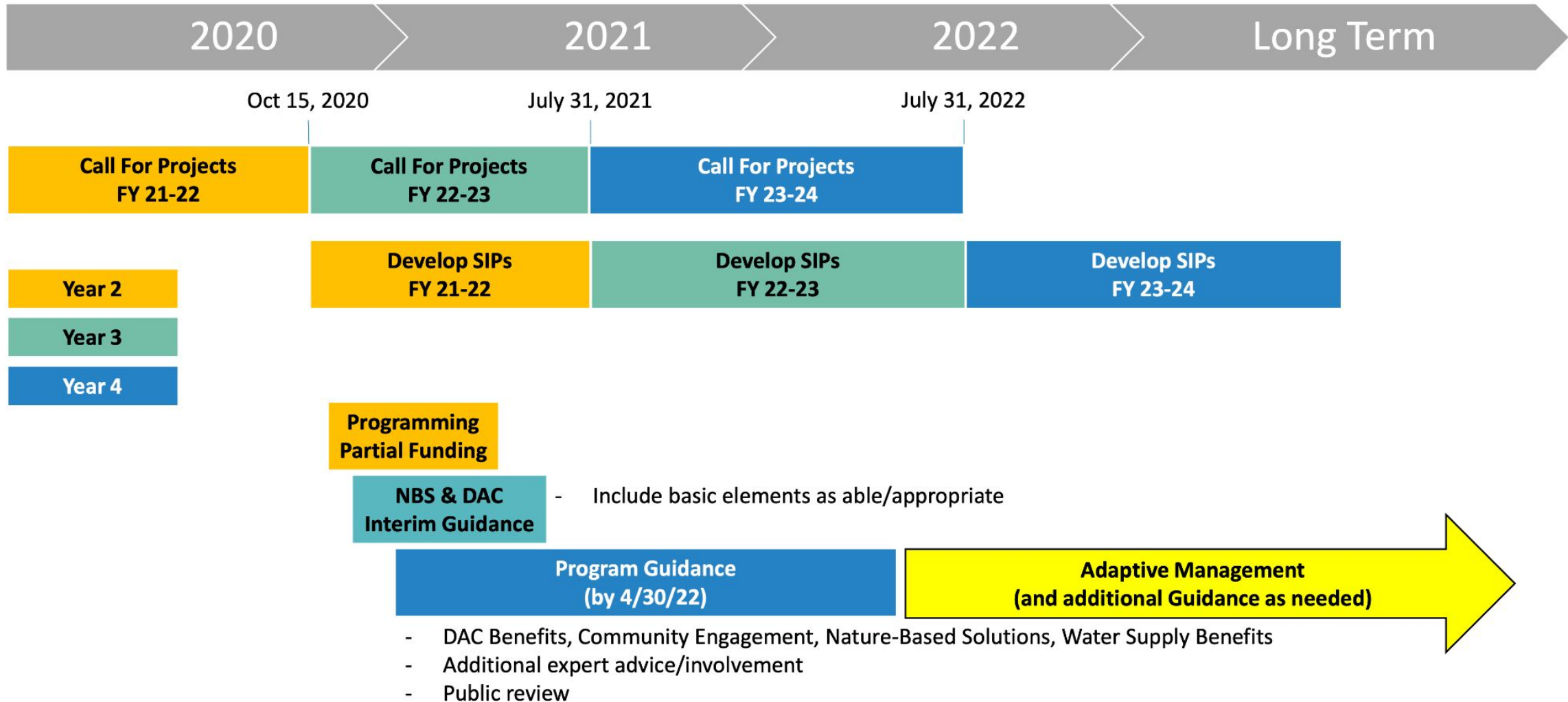
Project Applicants:

- Any entity with a completed Feasibility Study
 - Including Feasibility Studies funded by Technical Resource Program
- Requires Municipal sponsors (MOU)

Projects and Activities:

- Multi-benefit
- Watershed-based
- Design, construction, land acquisition, O&M, programs, and other eligible activities
- Projects to be included in an approved water quality plan such as E/WMP, IRWM, and others

Anticipated Timeline for Additional Guidelines



Questions?



SafeCleanWaterLA.org



SafeCleanWaterLA@pw.lacounty.gov



833-ASK-SCWP