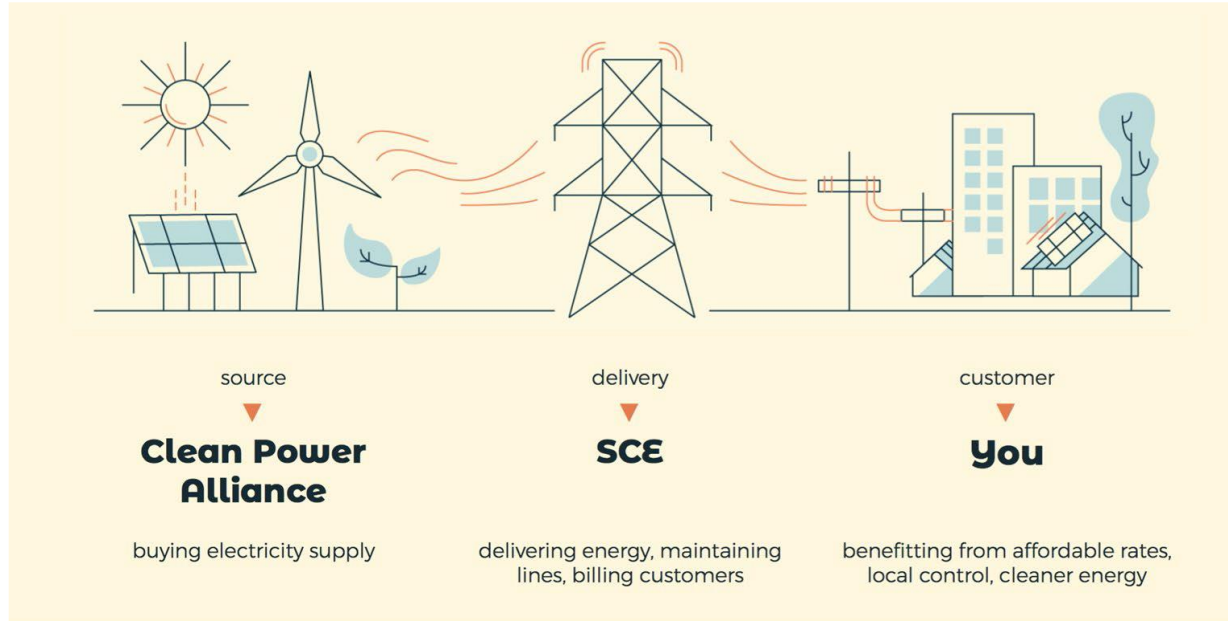




Transition to **100% Green Power**

August 25, 2021

CLEAN POWER ALLIANCE



- Clean Power Alliance is an electricity supply provider, offering **clean, renewable energy at competitive rates** to our community.
- Clean Power Alliance purchases clean power and Southern California Edison (SCE) delivers it.
- Southern California Edison (SCE) sends your monthly bill, which includes your SCE charges for electricity delivery followed by your Clean Power Alliance charges for electricity supply/generation.
- Note that Clean Power Alliance is NOT an added fee; it simply replaces the SCE supply/generation charges on your bill.



Who Does Clean Power Alliance Serve

- Clean Power Alliance is a public entity formed through a Joint Powers Authority (JPA) made up of 32 public agencies across Southern California.
- Clean Power Alliance serves approximately 1 million customer accounts representing 3 million residents and businesses.

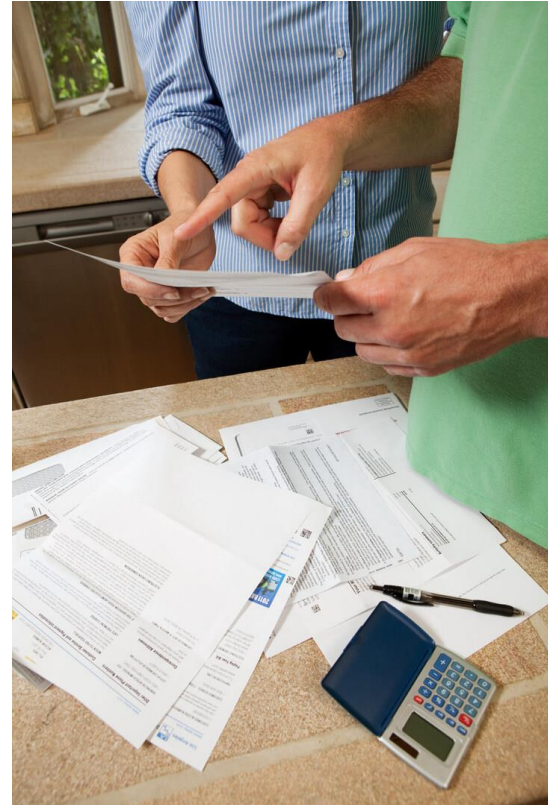
CPA: The Clean Energy Future is Here

Nation's Top Provider of 100% Clean Energy

- 305,000 customers on 100% Renewable Energy rate plans Customer Demand for Renewables = Met California's Clean Energy Targets 10 Years Early
- Reduces more than 1 million tons of greenhouse gases annually
- ~ 2500 Jobs Created
- Reliable decarbonization
- Local accountability and local benefit with revenues reinvested through local programs

Energy Rates

- Rates are increasing for all customers across the state
- National, regional, and local events, including wildfire, are driving prices higher
- SCE expected to change rates 8 times between Oct. 2020 and Jan. 2022 vs 1 rate change for CPA in July 2021



Calabasas is Going 100% Green!

- On October 9, Calabasas is transitioning to 100% Green Power.
- This means that renewable energy sources, like the sun and wind, will be used to produce the electricity that powers homes and businesses in Calabasas.
- This move will reduce greenhouse gas emissions by 39,946 metric tons each year!
That is the equivalent of planting 995,864 trees and taking 13,097 cars off the roads.
- Clean Power Alliance will clearly communicate these changes to customers, with the financial impacts as well as the benefit to the environment.
- The default change will take place on each customers' meter read date in October to coincide with the change from summer (higher) to winter (lower) rates.

Power of Choice

Start Making Your
Community Better



Lean Power

40% clean power

Support the Future of
Your Community



Clean Power

50% clean power

Invest in Your
Community and the
World



100% Green Power

100% renewable energy.

A cost comparison between the options for an \$100 bill :

	SCE	CPA Lean	CPA Clean	CPA 100% Green
\$	100	\$ 106.00	\$ 107.00	\$ 110.00

Calabasas' Transition to **100% Green Power**



Power of Choice cleanpoweralliance.org/compare

Calculate & Compare

See what your bill could look like with different Clean Power Alliance and Southern California Edison (SCE) service offerings using the calculator tool below. Click the orange question icons for guidance on where to find each input on your bill.

Rate

DOMESTIC



Service Location

Unincorporated Los Angeles Ct



Bill Ending Month

November



Winter - Baseline Usage (kWh)



Tier 1

Tier 2

High Usage Charge

[Click Here to Compare Your Bill](#)

Customers will have access to same tools and ability to change rates, stay on their current rate, or opt out of CPA

Enter Account Information

SCE Customer Account Number (Required)

Please enter your 12-digit SCE Customer Account Number



[View Sample SCE Bill Information](#)

Your Last Name or Business Name (Required)

Enter at least the first three letters



Service Location ZIP Code (Required)

Please enter your ZIP Code as it appears on your SCE bill



Next

OPT
OUT

JOIN
US

CPA

Ways to Connect with CPA

Online: cleanpoweralliance.org



Email: customerservice@cleanpoweralliance.org

Customer Support: 888-585-3788



CPA Bill Assistance Programs

1/3 of CPA customers receive bill assistance. Learn more at cleanpoweralliance.org/CPAbillhelp

AMP (Arrearage Management Plan)

- Debt-forgiveness program for customers with at least \$500 in past due electricity bills with some portion of the debt at least 90 days past due.

CARE (California Alternate Rates for energy)

- Reduces energy bills for eligible customers by about 30%. You can qualify for CARE based on participation in public assistance programs, or on household income.

FERA (Family Electric Rate Assistance)

- Reduces electric bills for qualified households by 18%. You can qualify for FERA based on participation in public assistance programs, or on household income.

Medical Baseline

- Helps offset the cost to operate medical equipment. This program provides an additional 16.5 kilowatt-hours (kWh) of electricity per day at the lowest rate.

CA COVID-19 Rent Relief

- CA COVID-19 Rent Relief will help income-eligible households pay rent and utilities, both for past due and future payments.

CPA Power Response Incentives

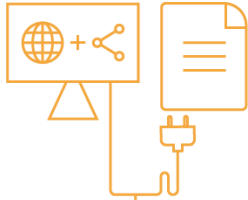
- Power Response program allows you to save up to \$200 a year by reducing your energy usage during times of heavy usage.

SCE's Summer Discount Program

- Save up to \$230 a year by allowing SCE to shut down your air conditioning during emergencies or periods of high electricity demand.

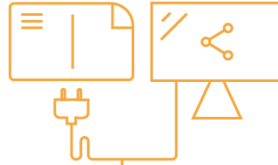
Outreach Timeline

Social Media
Webpages
eNewsletters



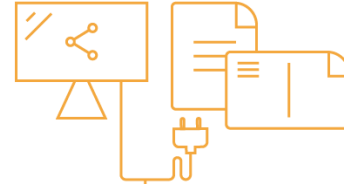
August

Postcard
Webpages
Social Media
eNewsletters



September

Press Release
2nd post card
Social Media
Webpages
eNewsletter



October

Questions



Thank you,
CALABASAS



CPA CLEAN
POWER
ALLIANCE