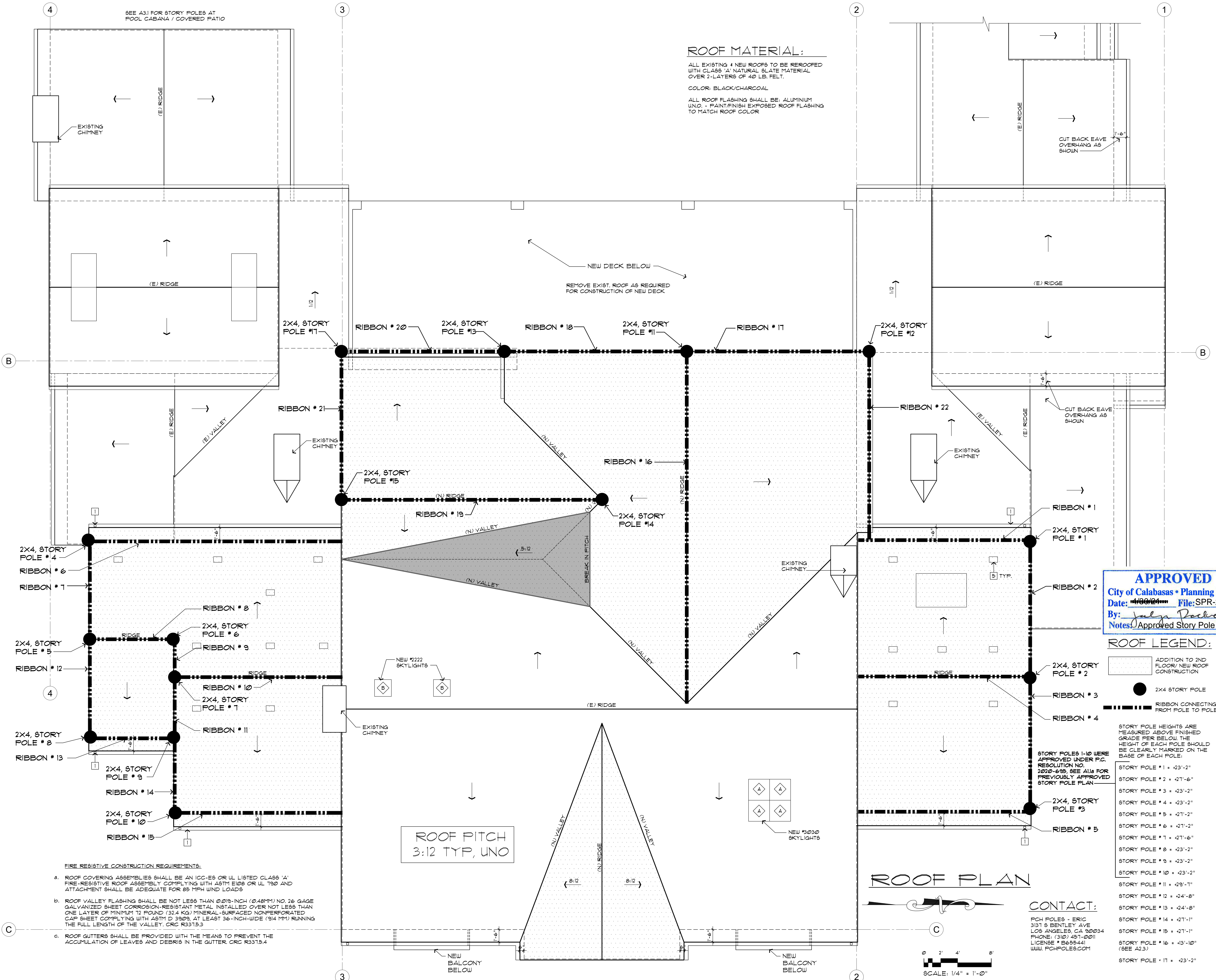


ROOF MATERIAL:
ALL EXISTING & NEW ROOFS TO BE REROOFED WITH CLASS 'A' NATURAL SLATE MATERIAL OVER 2-LAYERS OF 40 LB. FELT.
COLOR: BLACK/CHARCOAL
ALL ROOF FLASHING SHALL BE: ALUMINIUM UNO. - PAINT/FINISH EXPOSED ROOF FLASHING TO MATCH ROOF COLOR



APPROVED
City of Calabasas - Planning Dept.
Date: 4/30/21 File: SPR-2021-005 PAR-2021-001
By: *Julia Pacheco*
Notes: Approved Story Pole Plan Only

ROOF LEGEND:
[Pattern] ADDITION TO 2ND FLOOR / NEW ROOF CONSTRUCTION
● 2X4 STORY POLE
[Dashed Line] RIBBON CONNECTING FROM POLE TO POLE

STORY POLE HEIGHTS ARE MEASURED ABOVE FINISHED GRADE PER BELOW. THE HEIGHT OF EACH POLE SHOULD BE CLEARLY MARKED ON THE BASE OF EACH POLE:
STORY POLE # 1 = +23'-2"
STORY POLE # 2 = +21'-6"
STORY POLE # 3 = +23'-2"
STORY POLE # 4 = +23'-2"
STORY POLE # 5 = +21'-2"
STORY POLE # 6 = +21'-2"
STORY POLE # 7 = +21'-6"
STORY POLE # 8 = +23'-2"
STORY POLE # 9 = +23'-2"
STORY POLE # 10 = +23'-2"
STORY POLE # 11 = +23'-7"
STORY POLE # 12 = +24'-8"
STORY POLE # 13 = +24'-8"
STORY POLE # 14 = +21'-1"
STORY POLE # 15 = +21'-1"
STORY POLE # 16 = +13'-10"
(SEE A2.3)
STORY POLE # 17 = +23'-2"

CONTACT:
FCH POLES - ERIC
3151 S BENTLEY AVE
LOS ANGELES, CA 90034
PHONE: (310) 451-0011
LICENSE # B655441
WWW.FCHPOLES.COM

FIRE RESISTIVE CONSTRUCTION REQUIREMENTS:
a. ROOF COVERING ASSEMBLIES SHALL BE AN ICC-ES OR UL LISTED CLASS 'A' FIRE-RESISTIVE ROOF ASSEMBLY COMPLYING WITH ASTM E108 OR UL 750 AND ATTACHMENT SHALL BE ADEQUATE FOR 85 MPH WIND LOADS
b. ROOF VALLEY FLASHING SHALL BE NOT LESS THAN 0.019-INCH (0.48MM) NO. 26 GAGE GALVANIZED SHEET CORROSION-RESISTANT METAL INSTALLED OVER NOT LESS THAN ONE LAYER OF MINIMUM 12 POUND (32.4 KG) MINERAL-SURFACED NONPERFORATED CAP SHEET COMPLYING WITH ASTM D 3903, AT LEAST 36-INCH-WIDE (914 MM) RUNNING THE FULL LENGTH OF THE VALLEY. CRC R3315.3
c. ROOF GUTTERS SHALL BE PROVIDED WITH THE MEANS TO PREVENT THE ACCUMULATION OF LEAVES AND DEBRIS IN THE GUTTER. CRC R3315.4

ROOF PITCH
3:12 TYP, UNO

SCALE: 1/4" = 1'-0"