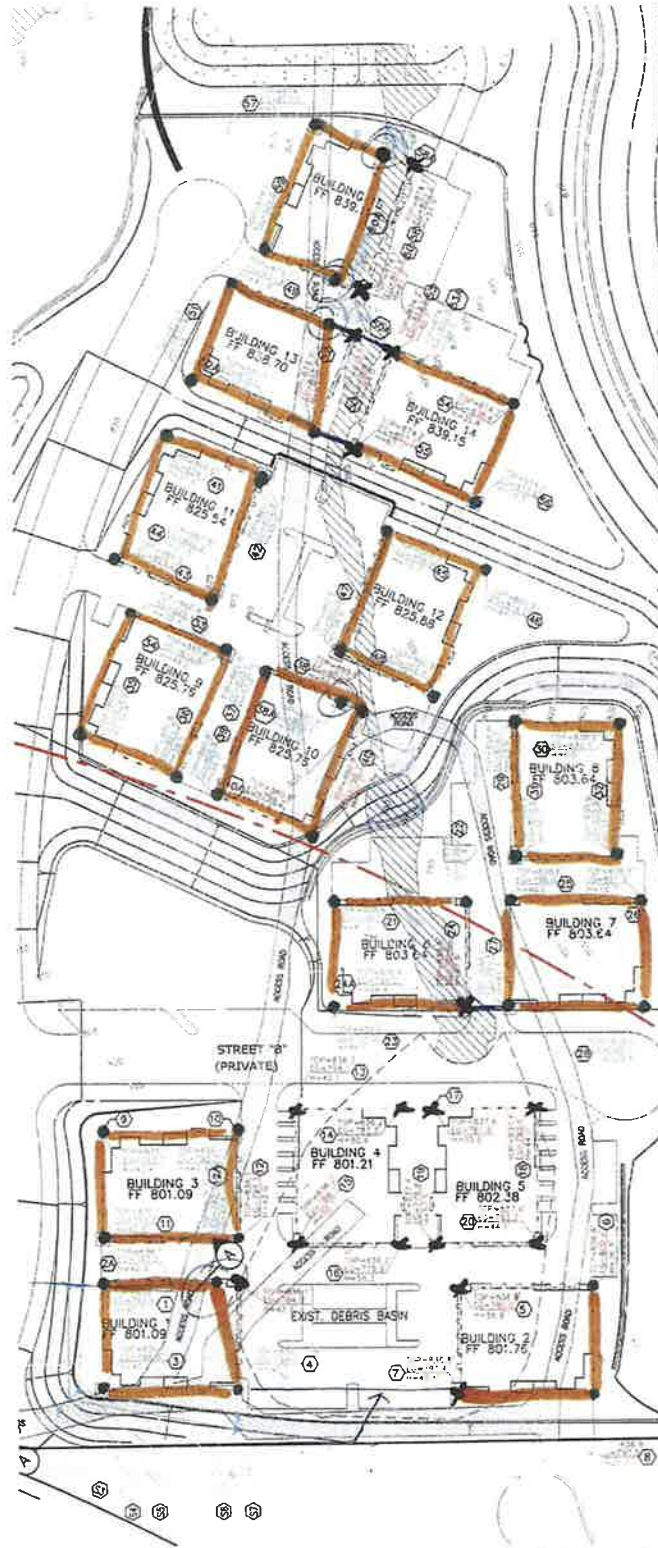


EXHIBIT M

AS-BUILT NOTES



Sheet 1	Area 57
Sheet 2	Area 58
Sheet 3	Area 59
Sheet 4	Area 60
Sheet 5	Area 61
Sheet 6	Area 62
Sheet 7	Area 63
Sheet 8	Area 64
Sheet 9	Area 65
Sheet 10	Area 66
Sheet 11	Area 67
Sheet 12	Area 68
Sheet 13	Area 69
Sheet 14	Area 70
Sheet 15	Area 71
Sheet 16	Area 72
Sheet 17	Area 73
Sheet 18	Area 74
Sheet 19	Area 75
Sheet 20	Area 76
Sheet 21	Area 77
Sheet 22	Area 78
Sheet 23	Area 79
Sheet 24	Area 80
Sheet 25	Area 81
Sheet 26	Area 82
Sheet 27	Area 83
Sheet 28	Area 84
Sheet 29	Area 85
Sheet 30	Area 86
Sheet 31	Area 87
Sheet 32	Area 88
Sheet 33	Area 89
Sheet 34	Area 90
Sheet 35	Area 91
Sheet 36	Area 92
Sheet 37	Area 93
Sheet 38	Area 94
Sheet 39	Area 95
Sheet 40	Area 96
Sheet 41	Area 97
Sheet 42	Area 98
Sheet 43	Area 99
Sheet 44	Area 100

50, 58, and 60
Moved out of creek

Extended flagging from 56 - 52

38 Moved from creek

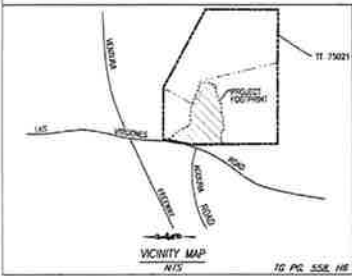
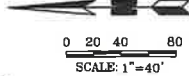
Flagging extended from 23 - 27

5, 7, 13 - 20
In basin not done

Flagging extended from 8 - 4

7 and 5 not done in basin

2 moved out of basin access road



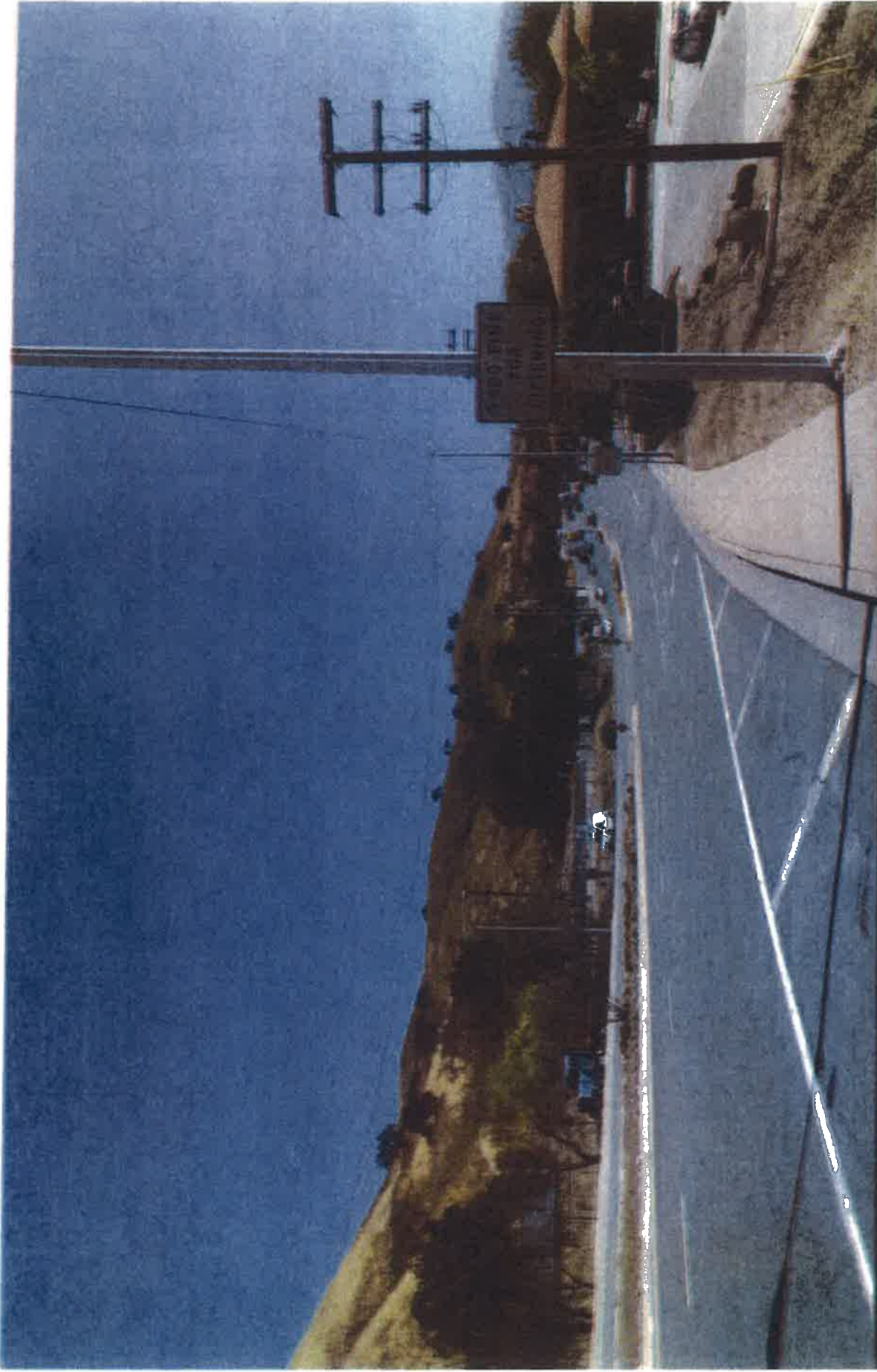
- LEGEND:**
- BUILDING STORY POLE INSTALLED
 - ⊗ ALTERNATE STORY POLE INSTALLED
 - ⊗ BUILDING STORY NOT INSTALLED
 - TALLEST POLE INSTALLED
 - ENVIRONMENTALLY SENSITIVE HABITAT
 - STORY POLE NUMBER
 - DESIGNATES AN ALTERNATE LOCATION
 - BUILDING ROOF LINE FLAGGING
 - FLAGGING HUNG ON WIRE BETWEEN POLES WHERE ONE POLE COULD NOT BE INSTALLED.
 - EXISTING DEBRIS BASIN
 - EG EXISTING GRADE
 - FF FINISHED FLOOR
 - FG FINAL GRADE
 - TOP ROOF ELEVATION
 - H POLE HEIGHT

AS-BUILT

NOTE: ALL POLES ASSOCIATED WITH THE COMMERCIAL BUILDINGS WERE INSTALLED PER PLAN.

<p>POLE INSTALLATION BY: HAWNER CONSTRUCTION DBA PCHPOLES C.B.L. OF 95441 3127 S. DENVER AVE LOS ANGELES, CA 90024</p>	<p>WEST VILLAGE AT CALABASAS STORY POLE EXHIBIT VTT-75021</p>
---	--

<p>OWNER/SUBOWNER: THE NEW HOME COMPANY 80 ENTERPRISE DRIVE, SUITE 450 ALISO VIEJO, CA 92656 CONTACT: RICK BIANCHI PH: (949) 362-2809</p>	<p>SURVEY PROVIDED BY: UNITED CIVIL, INC. 20141 AUBURN ROAD, SUITE 215 ARONA HILLS, CA 91301 TEL: (818) 707-8648 FAX: (818) 707-8649</p>	<p>PLAN PREPARED BY: UNITED CIVIL, INC. 30148 AUBURN ROAD, SUITE 215 ARONA HILLS, CA 91301 TEL: (818) 707-8648 FAX: (818) 707-8649</p>	<p>SHT 1 OF 1</p>
--	---	---	-------------------------------



View From Las Virgenes Road Looking South
(In Front Of Taco Bell)



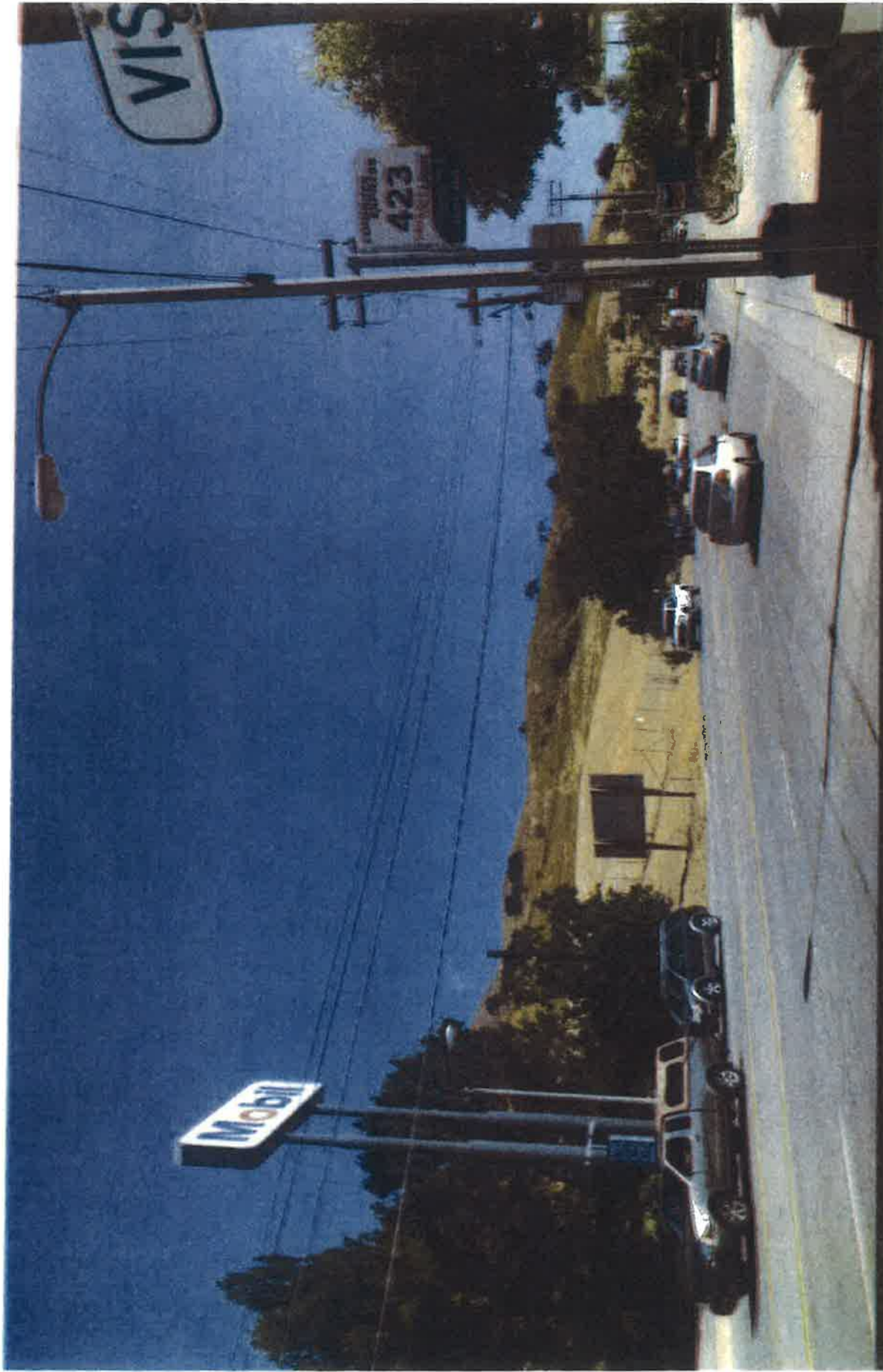
CITY OF CALABASAS



View From Las Virgenes Road Looking South
(In Front Of 7-Eleven / Calabasas Car Care)



CITY OF CALABASAS



View From Las Virgenes Road Looking South
(In Front Of Shell Gas Station)



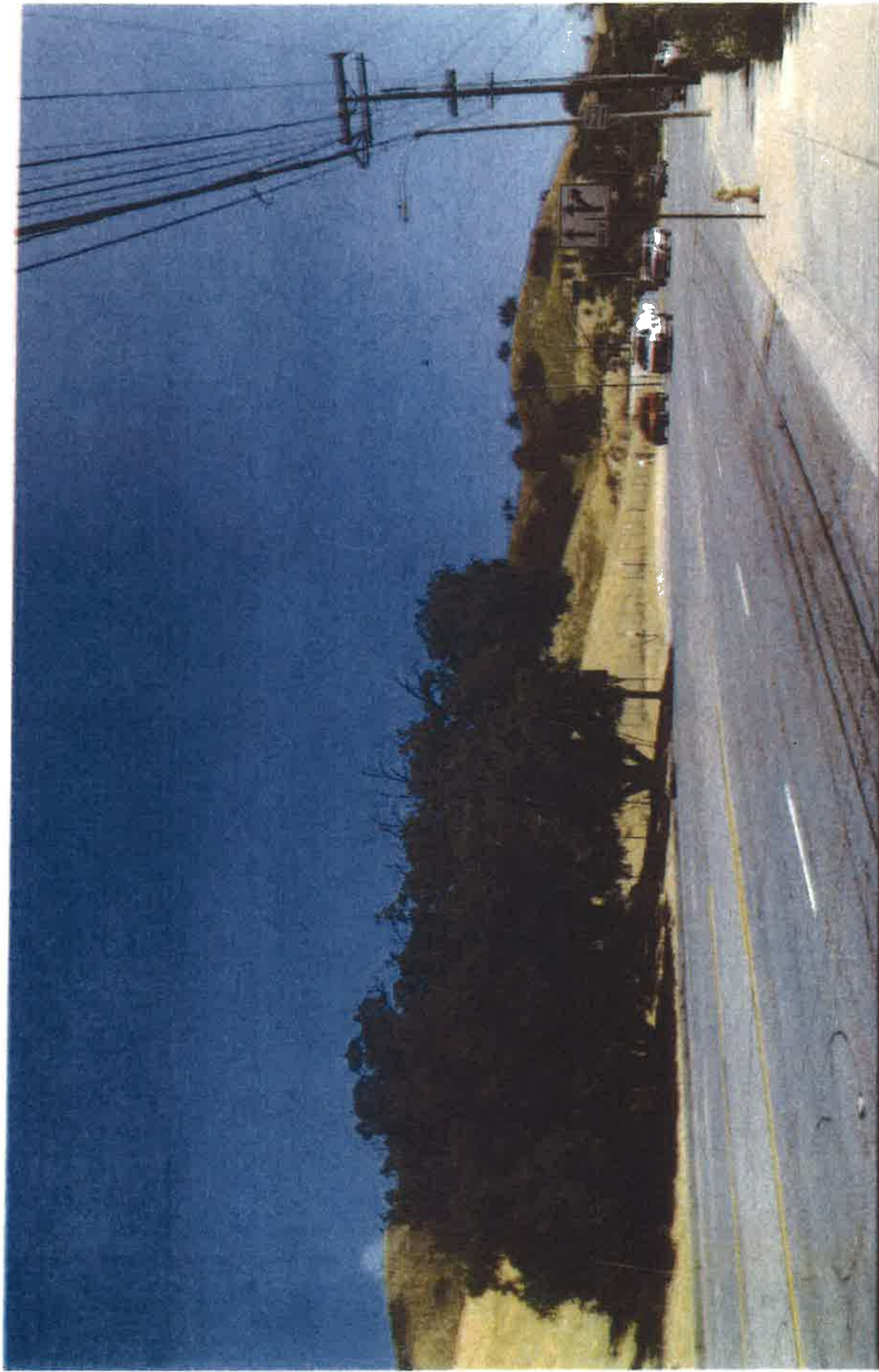
CITY OF CALABASAS



View From Las Virgenes Road Looking South
(In Front Of Pacific Bell Facility)

CITY OF CALABASAS

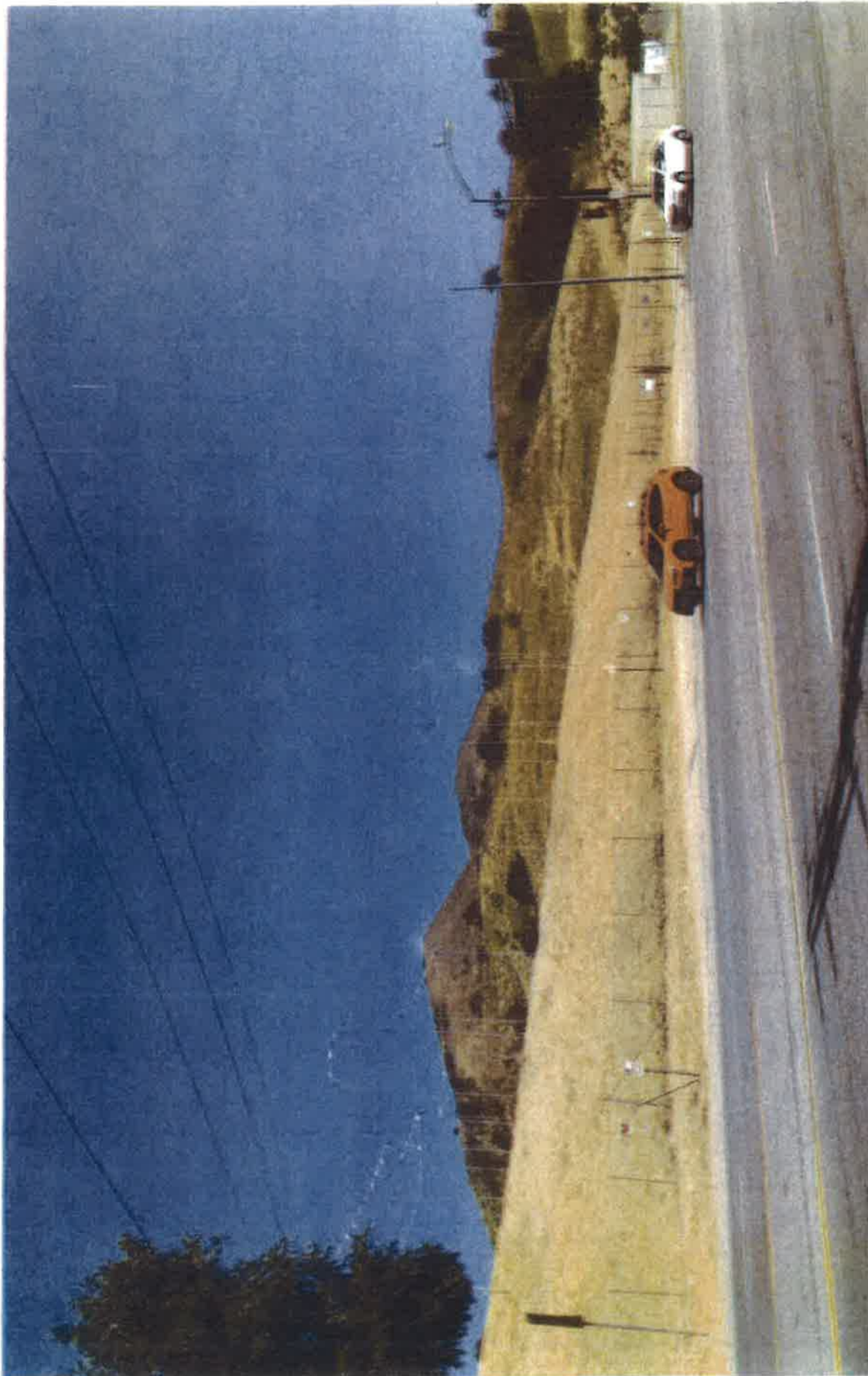




View From Las Virgenes Road Looking South
(In Front Of Chevron Gas Station)



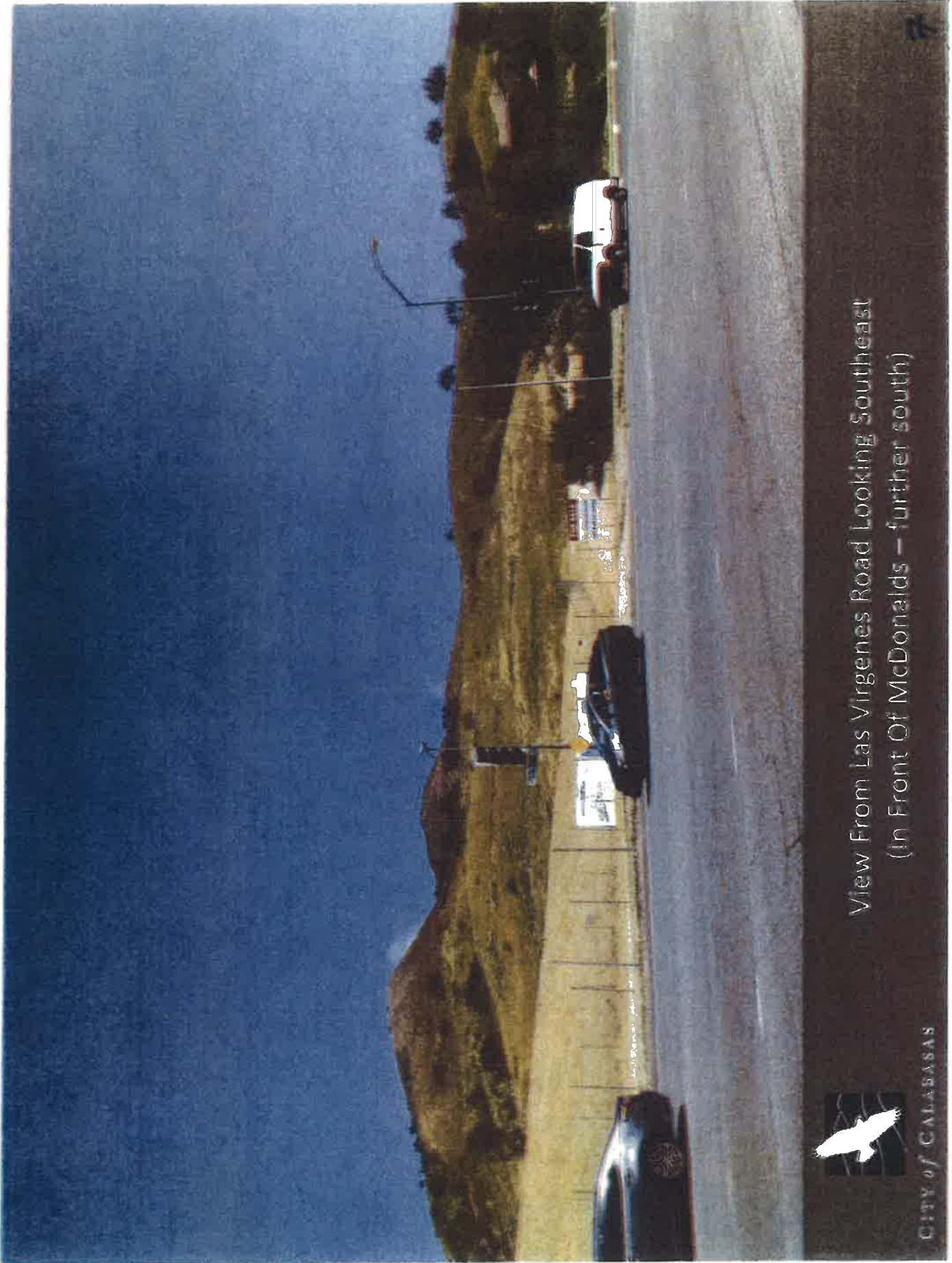
CITY OF CALABASAS



View From Las Virgenes Road Looking Southeast
(In Front Of McDonalds Restaurant)



CITY OF GALABASAS



View From Las Virgenes Road Looking Southeast
(In Front Of McDonalds – further south)



CITY OF CALABASAS



View From Las Virgenes Road Looking East
(At The Las Virgenes Rd/Agoura Rd Intersection)





View From Las Virgenes Road Looking Northeast
(At The Las Virgenes Rd/Agoura Rd Intersection)



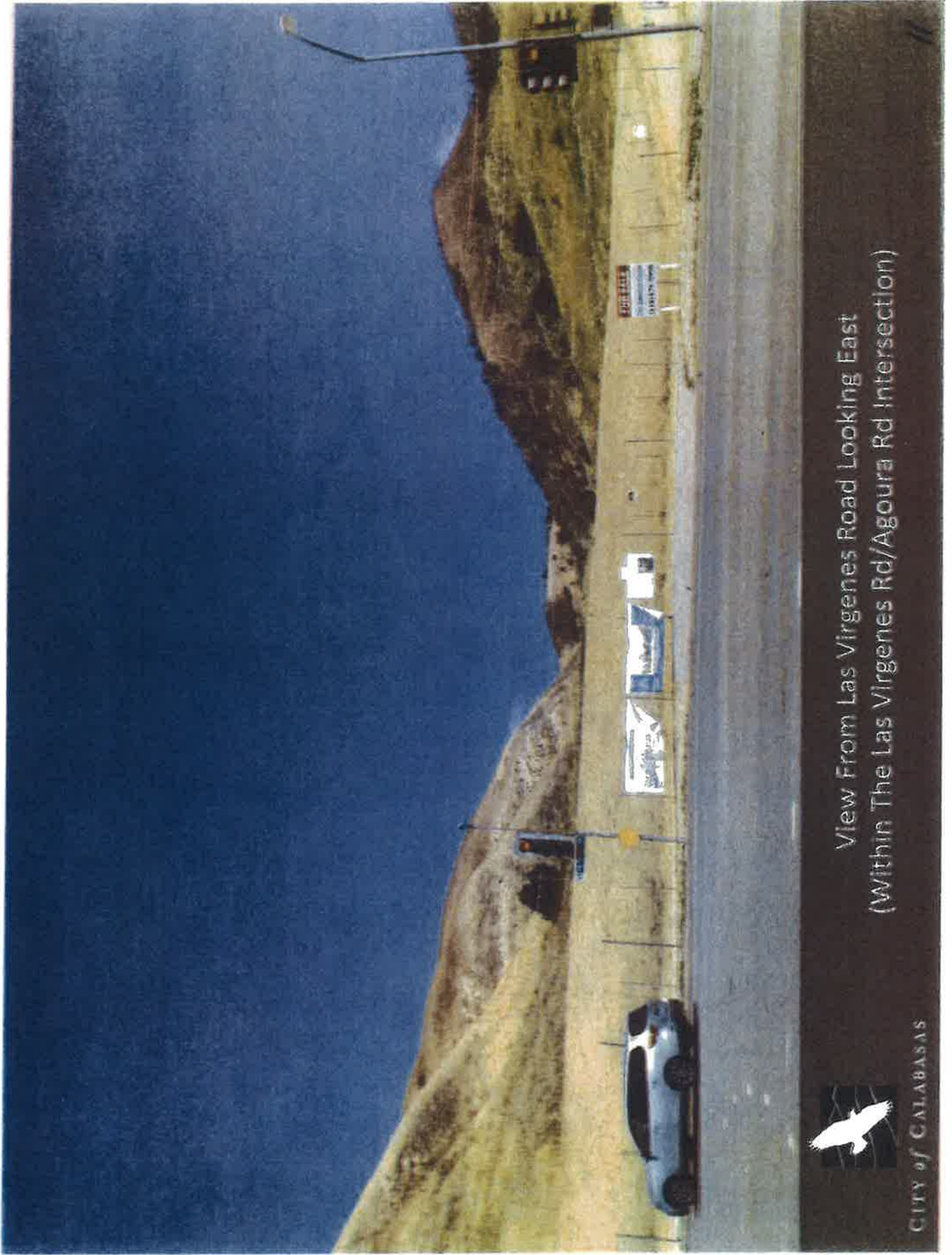
CITY OF CALABASAS



View From Las Virgenes Road Looking Southeast
(From the North Corner Of Las Virgenes Rd/Agoura Rd Intersection)



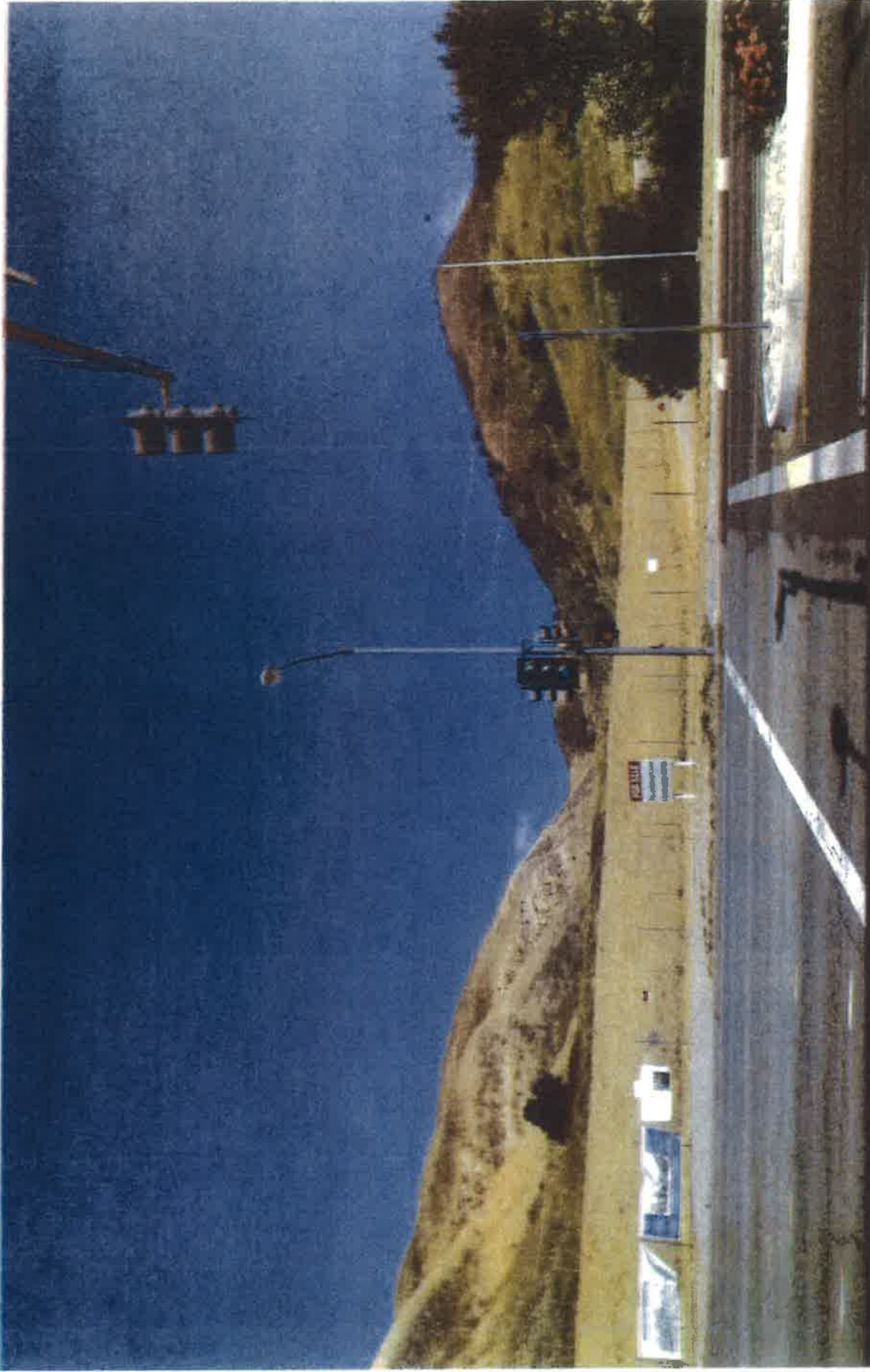
CITY OF CALABASAS



View From Las Virgenes Road Looking East
(Within The Las Virgenes Rd/Agoura Rd Intersection)



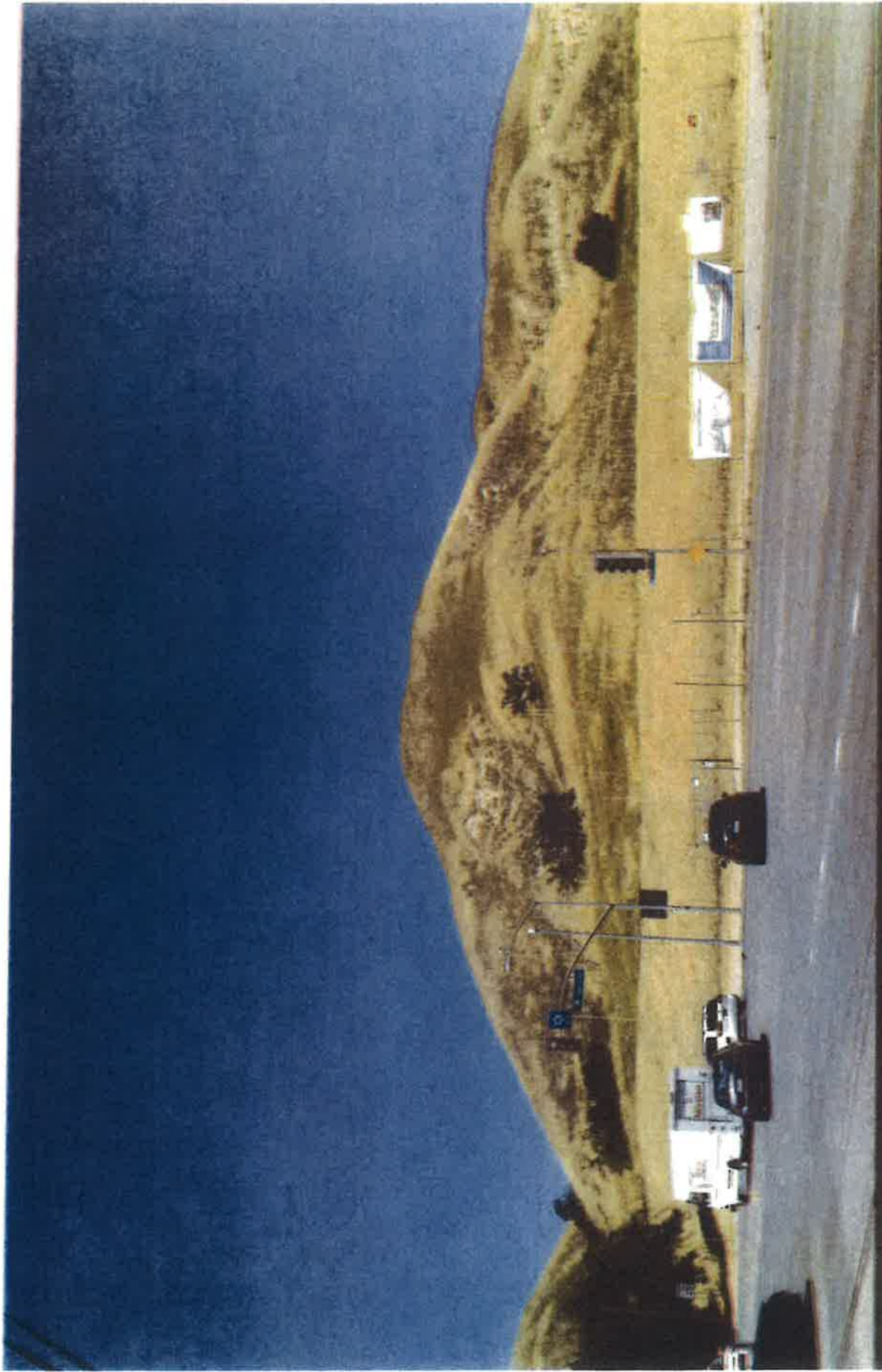
CITY OF CALABASAS



View From Las Virgenes Road Looking East
(From The South Corner of The Las Virgenes Rd/Agoura Rd Intersection)



CITY OF CALABASAS



View From Las Virgenes Road Looking Northeast
(From The South Corner Of Las Virgenes Rd/Agoura Rd Intersection)



CITY OF CALABASAS



View From Agoura Road Looking Northeast
(From Next To Malibu Canyon Plaza North Entrance Driveway)



CITY OF CALABASAS



View From Las Virgenes Road Looking Northeast
(From Next To Malibu Canyon Plaza East (Main) Entrance Driveway)



CITY OF CALABASAS



View From Las Virgenes Road Looking East
(From In Front Of Malibu Canyon Plaza)



CITY OF CALABASAS

16

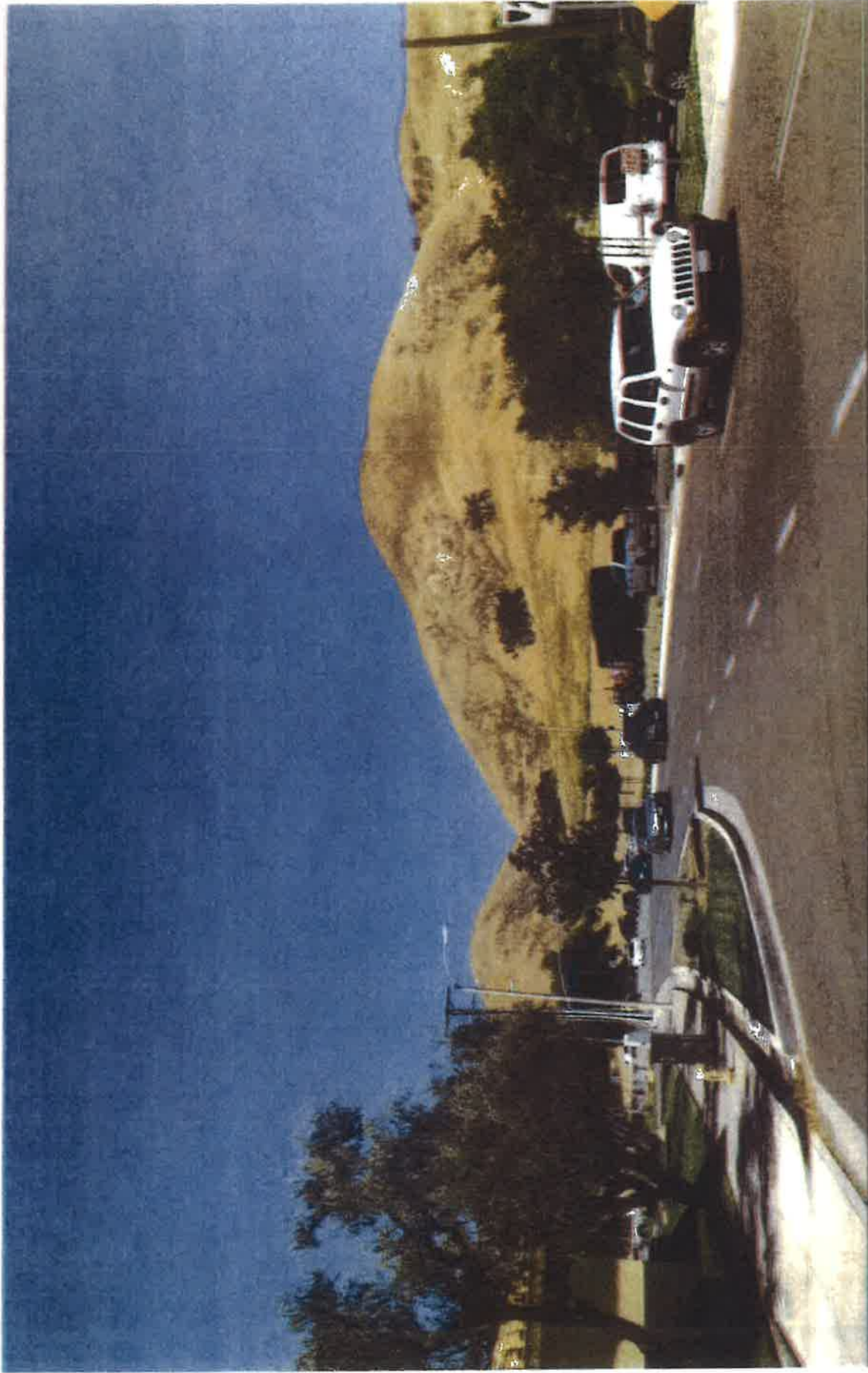


View From Las Virgenes Road Looking Northeast
(From In Front Of Malibu Canyon Plaza)



CITY OF CALABASAS

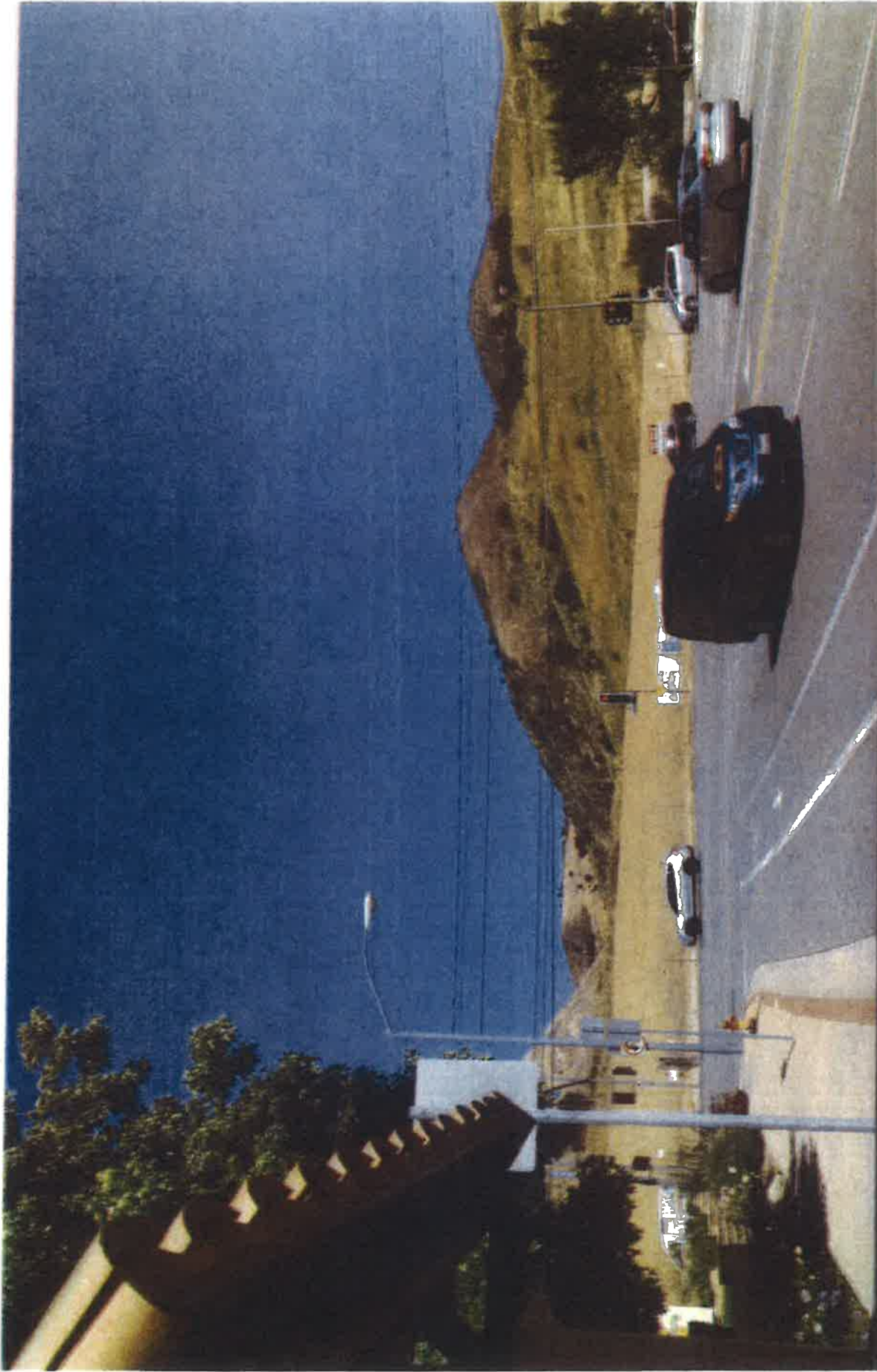
17



View From Las Virgenes Road Looking North
(From South Of Malibu Canyon Plaza Rear Entrance Driveway)



CITY OF CALABASAS



View From Agoura Road Looking East
(From Next To the Bus Shelter Near McDonalds Restaurant)

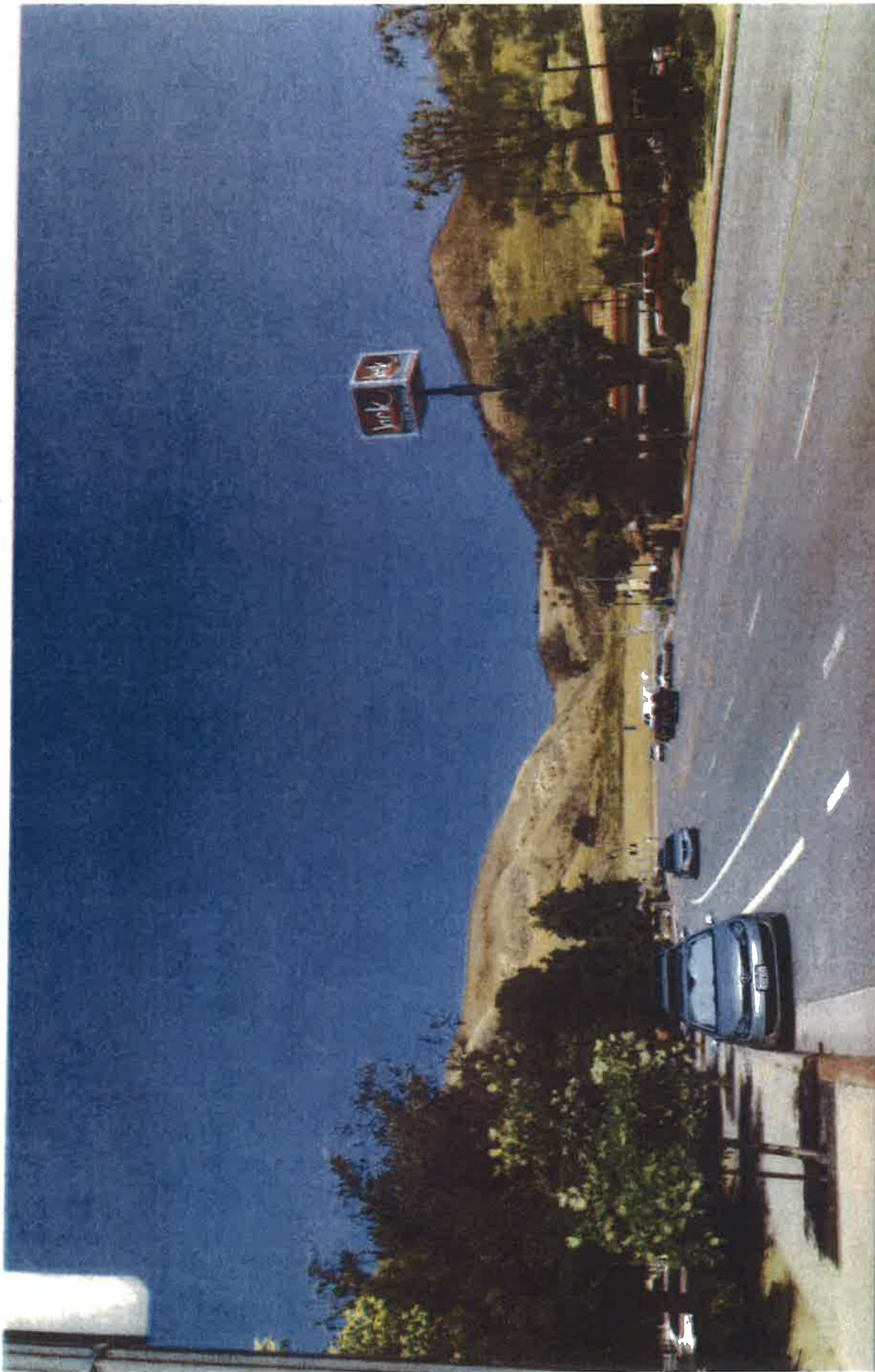


CITY of CALABASAS



View From Agoura Road Looking East/Southeast
(From West Of McDonalds Restaurant Entrance)





View From Agoura Road Looking East
(From Next To Albertson's)



CITY OF CALABASAS



View From Lost Hills Overpass Looking Northeast

