

Calabasas Trails Master Plan w/ Regional Trails

Legend

- City_Border
- Roads
- Roadway Undercrossings
- Existing Trailhead

Trails

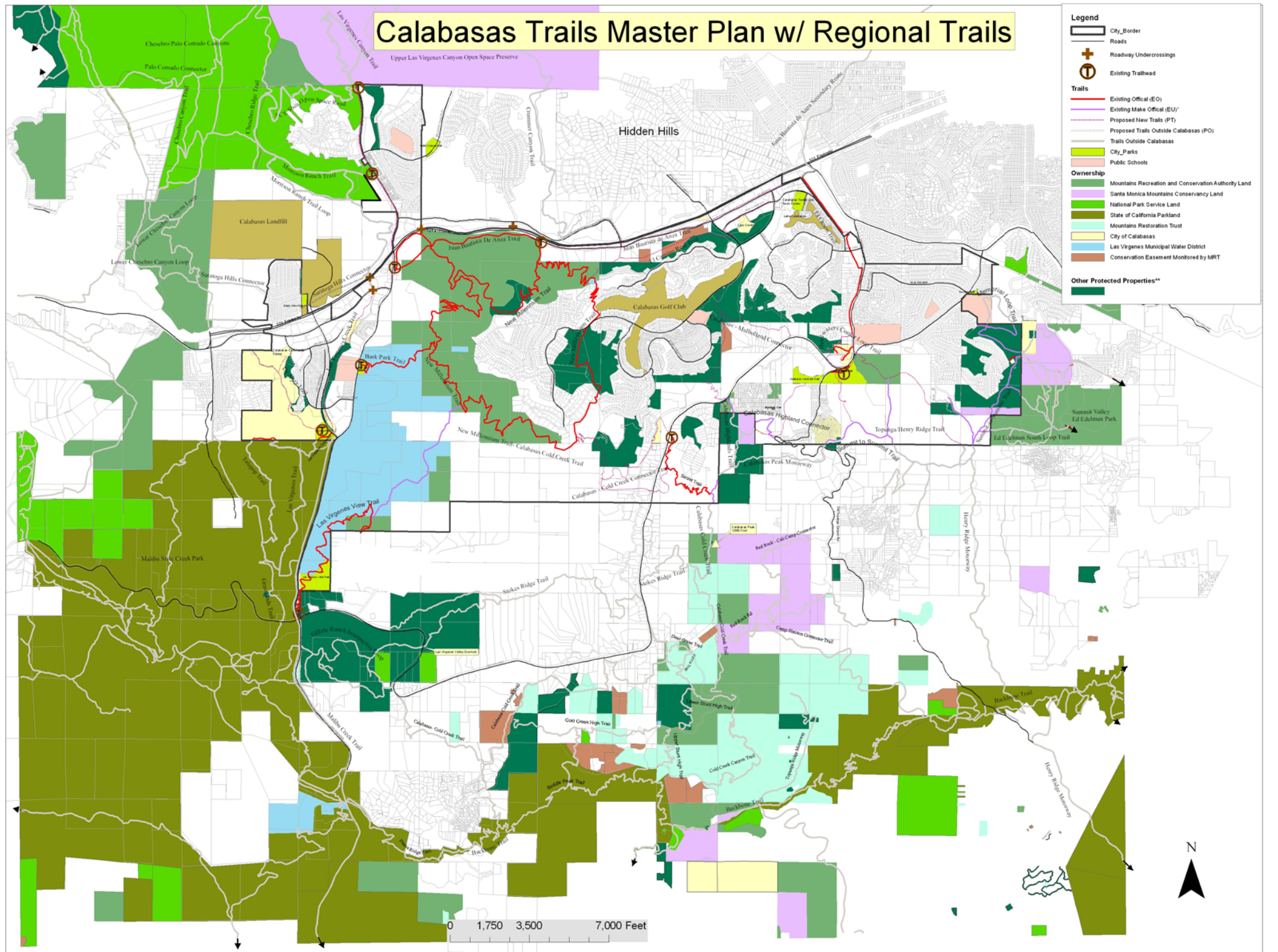
- Existing Official (EO)
- Existing Make Official (EU)*
- Proposed New Trails (PT)
- Proposed Trails Outside Calabasas (PO)
- Trails Outside Calabasas
- City_Parks
- Public Schools

Ownership

- Mountains Recreation and Conservation Authority Land
- Santa Monica Mountains Conservancy Land
- National Park Service Land
- State of California Parkland
- Mountains Restoration Trust
- City of Calabasas
- Las Virgenes Municipal Water District
- Conservation Easement Monitored by MRT

Other Protected Properties**

-



Map printed June 1, 2007. This map was prepared by the City in collaboration with National Park Service.

Disclaimer: This map was created for use by the City of Calabasas for trail planning purposes only. It is an illustrative map and is not intended to be used as a way finding map. For existing official trails, detailed trail maps may be obtained from the public agency managing the trail. Some trails shown do not exist currently and are planned for the future, or they exist but are not yet officially designated. Permission to use trails shown on this map should not be assumed. Some trails may traverse or abut private property and suggested alignments do not imply rights of public use except as may be accommodated legally via easements or covenants.

* The "Existing, Make Official" designation represents existing dirt or paved roads or dirt paths that may be utilized for future trails. The use of the term "existing" does not grant the City any rights to utilize these roads or pathways without first obtaining a trail easement from the property owner.

** This includes OS-DR zoning, UC Reserve, and other miscellaneous public land.