

Calabasas Municipal Service Review and Sphere of Influence Update

Authored by Policy Consulting Associates and
Berkson Associates for the Local Agency Formation
Commission for the County of Los Angeles

August 12, 2020

What is a Municipal Service Review?

“In order to prepare and update spheres of influence in accordance with Section 56425, the Commission shall conduct a service review of the municipal services provided”

- Government Code §56430

A Sphere of Influence (SOI) is a planning boundary outside of an agency's legal boundary that designates the agency's probable future boundary and service area.

What is a Municipal Service Review?

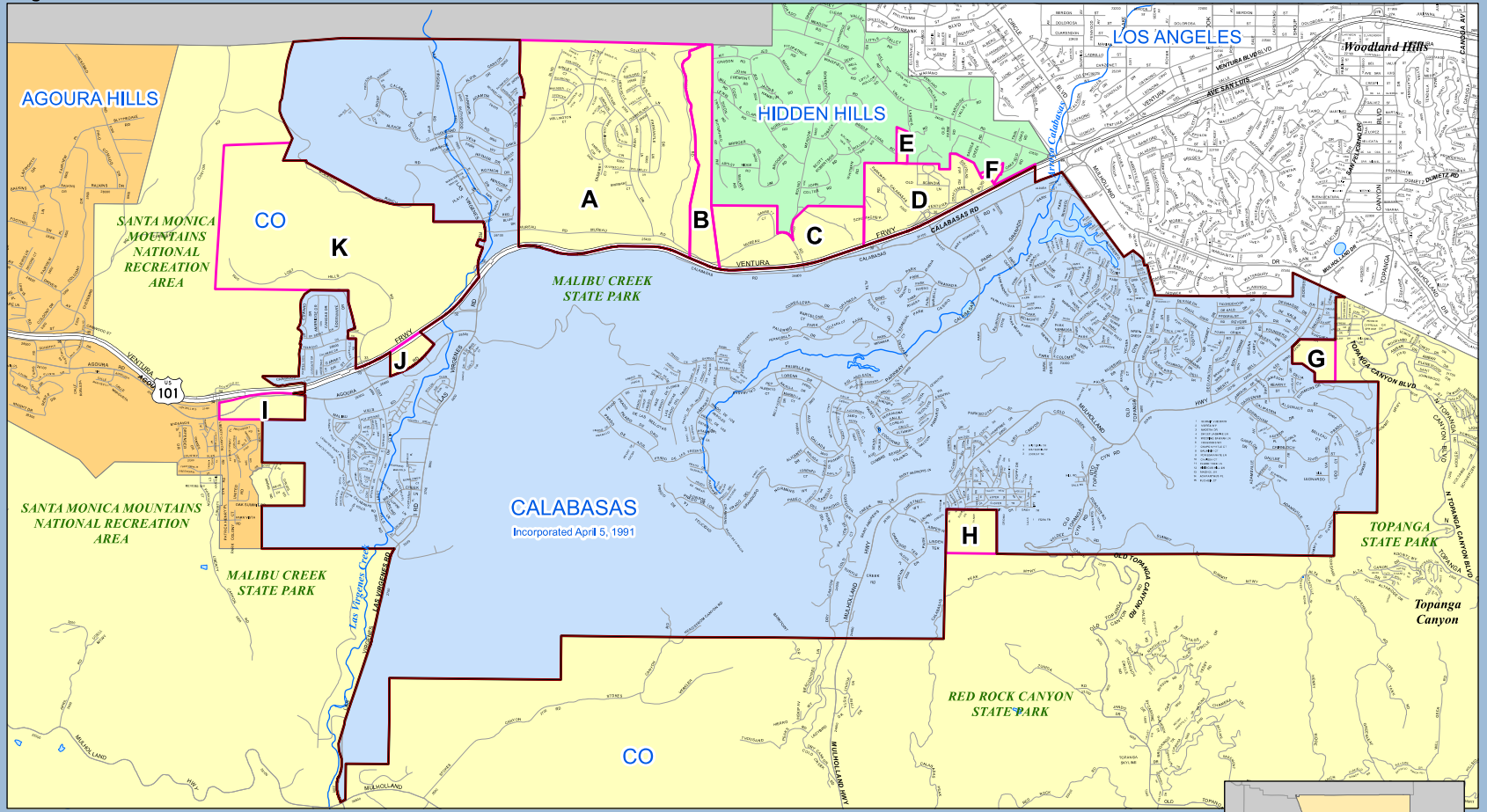
AB 1744 requires LAFCo to make certain determinations:

- Present and planned capacity of public facilities and adequacy of public services
- Disadvantaged Unincorporated Communities
- Growth and population projections
- Financial ability of agencies to provide services
- Status of, and opportunities for, shared facilities
- Accountability for community service needs
- Any other matter related to effective or efficient service delivery

MSR Process

1. Development of project website
2. Public outreach via email updates
3. Data discovery
4. Request for information
5. City interviews
6. City review of chapter
7. Compilation of administrative draft
8. Review by LAFCO staff
9. Release of public review draft list of interested staff, governing body, and public
10. Presentations at Agoura Hills, Calabasas and Hidden Hills council meetings
11. Edits made pursuant to comments received
12. Considered for adoption at LAFCO Public Hearing 9/9

Figure 5-5



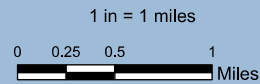
Calabasas Sphere of Influence

Legend

- City of Calabasas
- Calabasas Sphere of Influence (SOI), Coterminous

Sphere of Influence History

Action	Effective Date
Established	07-08-92
Reconfirmed	08-25-04
Reconfirmed	10-10-12



Revised: June 2, 2020

©2018 City of Calabasas, CA

Sphere of Influence Update

- Area A (Mountain View Estates) - the Mountain View Estates subdivision with 385 single-family homes covering approximately 237 acres, and open space lands covering 558 acres.
- Area B (Las Virgenes Open Space Preserve) - Adjacent to Hidden Hills western municipal boundary, undeveloped and substantially includes Upper Las Virgenes Open Space Preserve.
- Area C (Mureau Estates) - Unincorporated area south of Hidden Hills and north of Calabasas, includes gated Mureau Estates and a school.
- Areas D (Craftsman's Corner) - Commercial area proposed for annexation by Calabasas.
- Areas E and F (Craftsman's Corner) - Four unincorporated parcels required by LAFCO to be annexed to the Hidden Hills to prevent creation of unincorporated "islands" between cities post annexation of Area D.

Sphere of Influence Update

- Area G (Alice C. Stelle Middle School) - consists only of the Alice C. Stelle Middle School, surrounded on three sides by Calabasas, and is accessible only from Mullholland Highway, which is within the City.
- Area H (Open Space) - two lots zoned as open space.
- Area I (Agoura Road) – 43 acres with five properties, service island with potential shared impacts on both Agoura Hills and Calabasas
- Area J (Agoura Road) – 6 parcels with 7 business park structures, surrounded by Calabasas and Highway 101. Access is only from Agoura Road through the City.
- Area K (Calabasas Landfill) - 645 acres of open space and heavy agricultural designated uses. The Calabasas Landfill has been identified for potential future open space and regional recreational uses.

Sphere of Influence Recommendations

- Include Areas A, D, G, H and J within SOI to improve service efficiencies and create more logical city boundaries which integrate communities.
- Include Area D (and exclude E and F) consistent with the agreement between Hidden Hills and Calabasas.
- Areas B and C are recommended to remain in the Hidden Hills SOI so the City may have an opportunity to plan for these areas during its GP Update.
- Area I (Agoura Road) becomes a LAFCO “Area of Concern” or joint planning area between the County, Agoura Hills, and Calabasas to address issues of mutual concern/interest.
- Continue to exclude Area K from the City’s SOI until the landfill is nearing closure and the City has a more defined plan for use.