

# AIR QUALITY AND LAND USE HANDBOOK: A COMMUNITY HEALTH PERSPECTIVE



**April 2005**

California Environmental Protection Agency  
California Air Resources Board



# Air Agency Contacts

## Federal-

### U.S. EPA, Region 9

Phone: (866)-EPA-WEST  
Website: [www.epa.gov/region09](http://www.epa.gov/region09)  
Email: [r9.info@epa.gov](mailto:r9.info@epa.gov)

## -State-

### California Air Resources Board

Phone: (916) 322-2990 (public info)  
(800) 363-7664 (public info)  
(800) 952-5588 (complaints)  
(866)-397-5462 (env. justice)  
Website: [www.arb.ca.gov](http://www.arb.ca.gov)  
Email: [helpline@arb.ca.gov](mailto:helpline@arb.ca.gov)

## -Local-

### Amador County APCD

Phone: (209) 257-0112  
Website: [www.amadorapcd.org](http://www.amadorapcd.org)  
E-Mail: [jharris@amadorapcd.org](mailto:jharris@amadorapcd.org)

### Antelope Valley AQMD

Phone: (661) 723-8070  
Complaint Line: (888) 732-8070  
Website: [www.avaqmd.ca.gov](http://www.avaqmd.ca.gov)  
E-Mail: [bbanks@avaqmd.ca.gov](mailto:bbanks@avaqmd.ca.gov)

### Bay Area AQMD

Phone: (415) 749-5000  
Complaint Line: (800) 334-6367  
Website: [www.baaqmd.gov](http://www.baaqmd.gov)  
E-Mail: [webmaster@baaqmd.gov](mailto:webmaster@baaqmd.gov)

### Butte County AQMD

Phone: (530) 891-2882  
Website: [www.bcaqmd.org](http://www.bcaqmd.org)  
E-Mail: [air@bcaqmd.org](mailto:air@bcaqmd.org)

### Calaveras County APCD

Phone: (209) 754-6504  
E-Mail: [jgrewal@co.calaveras.ca.us](mailto:jgrewal@co.calaveras.ca.us)

### Colusa County APCD

Phone: (530) 458-0590  
Website: [www.colusanet.com/apcd](http://www.colusanet.com/apcd)  
E-Mail: [ccair@colusanet.com](mailto:ccair@colusanet.com)

### El Dorado County AQMD

Phone: (530) 621-6662  
Website: [www.co.el-dorado.ca.us/emd/apcd](http://www.co.el-dorado.ca.us/emd/apcd)  
E-Mail: [mcctaggart@co.el-dorado.ca.us](mailto:mcctaggart@co.el-dorado.ca.us)

### Feather River AQMD

Phone: (530) 634-7659  
Website: [www.fraqmd.org](http://www.fraqmd.org)  
E-Mail: [fracmd@fracmd.org](mailto:fracmd@fracmd.org)

### Glenn County APCD

Phone: (530) 934-6500  
[http://www.countyofglenn.net/air\\_pollution\\_control](http://www.countyofglenn.net/air_pollution_control)  
E-Mail: [ktokunaga@countyofglenn.net](mailto:ktokunaga@countyofglenn.net)

### Great Basin Unified APCD

Phone: (760) 872-8211  
Website: [www.gbuapcd.org](http://www.gbuapcd.org)  
E-Mail: [gb1@greatbasinapcd.org](mailto:gb1@greatbasinapcd.org)

### Imperial County APCD

Phone: (760) 482-4606  
E-Mail: [reyesromero@imperialcounty.net](mailto:reyesromero@imperialcounty.net)

### Kern County APCD

Phone: (661) 862-5250  
Website: [www.kernair.org](http://www.kernair.org)  
E-Mail: [kcapcd@co.kern.ca.us](mailto:kcapcd@co.kern.ca.us)

### Lake County AQMD

Phone: (707) 263-7000  
Website: [www.lcaqmd.net](http://www.lcaqmd.net)  
E-Mail: [bohr@pacific.net](mailto:bohr@pacific.net)

### Lassen County APCD

Phone: (530) 251-8110  
E-Mail: [lassenag@psln.com](mailto:lassenag@psln.com)

### Mariposa County APCD

Phone: (209) 966-2220  
E-Mail: [air@mariposacounty.org](mailto:air@mariposacounty.org)

### Mendocino County AQMD

Phone: (707) 463-4354  
Website: [www.co.mendocino.ca.us/aqmd](http://www.co.mendocino.ca.us/aqmd)  
E-Mail: [mcaqmd@co.mendocino.ca.us](mailto:mcaqmd@co.mendocino.ca.us)

### Modoc County APCD

Phone: (530) 233-6419  
E-Mail: [modapcd@hdo.net](mailto:modapcd@hdo.net)

### Mojave Desert AQMD

Phone: (760) 245-1661  
(800) 635-4617  
Website: [www.mdagmd.ca.gov](http://www.mdagmd.ca.gov)

### Monterey Bay Unified APCD

Phone: (831) 647-9411  
(800) 253-6028 (Complaints)  
Website: [www.mbuapcd.org](http://www.mbuapcd.org)  
E-Mail: [dquetin@mbuapcd.org](mailto:dquetin@mbuapcd.org)

### North Coast Unified AQMD

Phone: (707) 443-3093  
Website: [www.ncuaqmd.org](http://www.ncuaqmd.org)  
E-Mail: [lawrence@ncuaqmd.org](mailto:lawrence@ncuaqmd.org)

### Northern Sierra AQMD

Phone: (530) 274-9360  
Website: [www.myairdistrict.com](http://www.myairdistrict.com)  
E-Mail: [office@myairdistrict.com](mailto:office@myairdistrict.com)

### Northern Sonoma County APCD

Phone: (707) 433-5911  
E-Mail: [nsc@sonic.net](mailto:nsc@sonic.net)

### Placer County APCD

Phone: (530) 889-7130  
Website: <http://www.placer.ca.gov/airpollution/airpollut.htm>  
E-Mail: [pcapcd@placer.ca.gov](mailto:pcapcd@placer.ca.gov)

### Sacramento Metro AQMD

Phone: (916) 874-4800  
Website: [www.airquality.org](http://www.airquality.org)  
E-Mail: [kshearer@airquality.org](mailto:kshearer@airquality.org)

### San Diego County APCD

Phone: (858) 650-4700  
Website: [www.sdapcd.org](http://www.sdapcd.org)

### San Joaquin Valley APCD

Phone: (559) 230-6000 (General)  
(800) 281-7003  
(San Joaquin, Stanislaus, Merced)  
(800) 870-1037  
(Madera, Fresno, Kings)  
(800) 926-5550  
(Tulare and Valley portion of Kern)  
Website: [www.valleyair.org](http://www.valleyair.org)  
E-Mail: [svapcd@valleyair.org](mailto:svapcd@valleyair.org)

### San Luis Obispo County APCD

Phone: (805) 781-5912  
Website: [www.slocleanair.org](http://www.slocleanair.org)  
E-Mail: [info@slocleanair.org](mailto:info@slocleanair.org)

### Santa Barbara County APCD

Phone (805) 961-8800  
Website: [www.sbcapcd.org](http://www.sbcapcd.org)  
Email us: [apcd@sbcapcd.org](mailto:apcd@sbcapcd.org)

### Shasta County AQMD

Phone: (530) 225-5789  
Website: [www.co.shasta.ca.us/Departments/ResourceMgmt/drm/aqmain.htm](http://www.co.shasta.ca.us/Departments/ResourceMgmt/drm/aqmain.htm)  
E-Mail: [scdrm@snowcrest.net](mailto:scdrm@snowcrest.net)

### Siskiyou County APCD

Phone: (530) 841-4029  
E-Mail: [ebeck@siskiyou.ca.us](mailto:ebeck@siskiyou.ca.us)

### South Coast AQMD

Phone: (909) 396-2000  
Complaint Line: 1-800-CUT-SMOG  
Website: [www.aqmd.gov](http://www.aqmd.gov)  
Email: [bwallerstein@aqmd.gov](mailto:bwallerstein@aqmd.gov)

### Tehama County APCD

Phone: (530) 527-3717  
Website: [www.tehcoapcd.net](http://www.tehcoapcd.net)  
Email: [general@tehcoapcd.net](mailto:general@tehcoapcd.net)

### Tuolumne County APCD

Phone: (209) 533-5693  
E-Mail: [bsandman@co.tuolumne.ca.us](mailto:bsandman@co.tuolumne.ca.us)

### Ventura County APCD

Phone: (805) 645-1400  
Complaint Line: (805) 654-2797  
Website: [www.vcapcd.org](http://www.vcapcd.org)  
E-Mail: [info@vcapcd.org](mailto:info@vcapcd.org)

### Yolo-Solano AQMD

Phone: (530) 757-3650  
Website: [www.ysaqmd.org](http://www.ysaqmd.org)  
Email: [administration@ysaqmd.org](mailto:administration@ysaqmd.org)

## ***To My Local Government Colleagues....***

I am pleased to introduce this informational guide to air quality and land use issues focused on community health. As a former county supervisor, I know from experience the complexity of local land use decisions. There are multiple factors to consider and balance. This document provides important public health information that we hope will be considered along with housing needs, economic development priorities, and other quality of life issues.

An important focus of this document is prevention. We hope the air quality information provided will help inform decision-makers about the benefits of avoiding certain siting situations. The overarching goal is to avoid placing people in harm's way. Recent studies have shown that public exposure to air pollution can be substantially elevated near freeways and certain other facilities. What is encouraging is that the health risk is greatly reduced with distance. For that reason, we have provided some general recommendations aimed at keeping appropriate distances between sources of air pollution and land uses such as residences.

Land use decisions are a local government responsibility. The Air Resources Board's role is advisory and these recommendations do not establish regulatory standards of any kind. However, we hope that the information in this document will be seriously considered by local elected officials and land use agencies. We also hope that this document will promote enhanced communication between land use agencies and local air pollution control agencies. We developed this document in close coordination with the California Air Pollution Control Officers Association with that goal in mind.

I hope you find this document both informative and useful.



Mrs. Barbara Riordian  
Interim Chairman  
California Air Resources Board

## TABLE OF CONTENTS

<b>EXECUTIVE SUMMARY</b> .....	<b>ES-1</b>
<b>1. ARB RECOMMENDATIONS ON SITING NEW SENSITIVE LAND USES</b> .....	<b>1</b>
FREEWAYS AND HIGH TRAFFIC ROADS .....	8
DISTRIBUTION CENTERS .....	11
RAIL YARDS .....	15
PORTS .....	19
PETROLEUM REFINERIES .....	21
CHROME PLATING OPERATIONS .....	23
DRY CLEANERS USING PERCHLOROETHYLENE (PERC DRY CLEANERS) .....	27
GASOLINE DISPENSING FACILITIES .....	30
OTHER FACILITY TYPES THAT EMIT AIR POLLUTANTS OF CONCERN .....	32
POTENTIAL SOURCES OF ODOR AND DUST COMPLAINTS .....	32
<b>2. HANDBOOK DEVELOPMENT</b> .....	<b>35</b>
<b>3. KEY COMMUNITY FOCUSED ISSUES LAND USE AGENCIES SHOULD CONSIDER</b> .....	<b>38</b>
INCOMPATIBLE LAND USES .....	38
CUMULATIVE AIR POLLUTION IMPACTS .....	39
<b>4. MECHANISMS FOR INTEGRATING LOCALIZED AIR QUALITY CONCERNS INTO LAND USE PROCESSES</b> .....	<b>40</b>
GENERAL PLANS .....	41
ZONING .....	42
LAND USE PERMITTING PROCESSES .....	43
OUTREACH TO OTHER AGENCIES .....	51
<b>5. AVAILABLE TOOLS TO EVALUATE CUMULATIVE AIR POLLUTION EMISSIONS AND RISK</b> .....	<b>53</b>
<b>6. ARB PROGRAMS TO REDUCE AIR POLLUTION IN COMMUNITIES</b> .....	<b>55</b>
<b>7. WAYS TO ENHANCE MEANINGFUL PUBLIC PARTICIPATION</b> .....	<b>58</b>

## **APPENDICES**

- Appendix A** Land Use Classifications And Associated Facility Categories That Could Emit Air Pollutants
- Appendix B** Land Use-Based Reference Tools To Evaluate New Projects For Potential Air Pollution Impacts
- Appendix C** ARB And Local Air District Information And Tools Concerning Cumulative Air Pollution Impacts
- Appendix D** Land Use And Air Quality Agency Roles In The Land Use Process
- Appendix E** Special Processes That Apply To School Siting
- Appendix F** General Processes Used By Land Use Agencies To Address Air Pollution Impacts
- Appendix G** Glossary Of Key Air Pollution Terms

## **Acknowledgments**

The ARB staff would like to acknowledge the exceptional contributions made to this document by members of the ARB Environmental Justice Stakeholders Group. Since 2001, ARB staff has consistently relied on this group to provide critical and constructive input on implementing the specifics of ARB's environmental justice policies and actions. The Stakeholders Group is convened by the ARB, and comprised of representatives from local land use and air agencies, community interest groups, environmental justice organizations, academia, and business. Their assistance and suggestions throughout the development of this Handbook have been invaluable.



## Executive Summary

The Air Resources Board's (ARB) primary goal in developing this document is to provide information that will help keep California's children and other vulnerable populations out of harm's way with respect to nearby sources of air pollution. Recent air pollution studies have shown an association between respiratory and other non-cancer health effects and proximity to high traffic roadways. Other studies have shown that diesel exhaust and other cancer-causing chemicals emitted from cars and trucks are responsible for much of the overall cancer risk from airborne toxics in California. Also, ARB community health risk assessments and regulatory programs have produced important air quality information about certain types of facilities that should be considered when siting new residences, schools, day care centers, playgrounds, and medical facilities (i.e., sensitive land uses). Sensitive land uses deserve special attention because children, pregnant women, the elderly, and those with existing health problems are especially vulnerable to the non-cancer effects of air pollution. There is also substantial evidence that children are more sensitive to cancer-causing chemicals.

Focusing attention on these siting situations is an important preventative action. ARB and local air districts have comprehensive efforts underway to address new and existing air pollution sources under their respective jurisdictions. The issue of siting is a local government function. As more data on the connection between proximity and health risk from air pollution become available, it is essential that air agencies share what we know with land use agencies. We hope this document will serve that purpose.

The first section provides ARB recommendations regarding the siting of new sensitive land uses near freeways, distribution centers, rail yards, ports, refineries, chrome plating facilities, dry cleaners, and gasoline dispensing facilities. This list consists of the air pollution sources that we have evaluated from the standpoint of the proximity issue. It is based on available information and reflects ARB's primary areas of jurisdiction – mobile sources and toxic air contaminants. A key air pollutant common to many of these sources is particulate matter from diesel engines. Diesel particulate matter (diesel PM) is a carcinogen identified by ARB as a toxic air contaminant and contributes to particulate pollution statewide.

Reducing diesel particulate emissions is one of ARB's highest public health priorities and the focus of a comprehensive statewide control program that is reducing diesel PM emissions each year. ARB's long-term goal is to reduce diesel PM emissions 85% by 2020. However, cleaning up diesel engines will take time as new engine standards phase in and programs to accelerate fleet turnover or retrofit existing engines are implemented. Also, these efforts are reducing diesel particulate emissions on a statewide basis, but do not yet capture every site where diesel vehicles and engines may congregate. Because living or going to school too close to such air pollution sources may increase both cancer and non-cancer health risks, we are recommending that proximity be considered in the siting of new sensitive land uses.



There are also other key toxic air contaminants associated with specific types of facilities. Most of these are subject to stringent state and local air district regulations. However, what we know today indicates that keeping new homes and other sensitive land uses from siting too close to such facilities would provide additional health protection. Chrome platers are a prime example of facilities that should not be located near vulnerable communities because of the cancer health risks from exposure to the toxic material used during their operations.

In addition to source specific recommendations, we also encourage land use agencies to use their planning processes to ensure the appropriate separation of industrial facilities and sensitive land uses. While we provide some suggestions, how to best achieve that goal is a local issue. In the development of these guidelines, we received valuable input from local government about the spectrum of issues that must be considered in the land use planning process. This includes addressing housing and transportation needs, the benefits of urban infill, community economic development priorities, and other quality of life issues. All of these factors are important considerations. The recommendations in the Handbook need to be balanced with other State and local policies.

Our purpose with this document is to highlight the potential health impacts associated with proximity to air pollution sources so planners explicitly consider this issue in planning processes. We believe that with careful evaluation, infill development, mixed use, higher density, transit-oriented development, and other concepts that benefit regional air quality can be compatible with protecting the health of individuals at the neighborhood level. One suggestion for achieving this goal is more communication between air agencies and land use planners. Local air districts are an important resource that should be consulted regarding sources of air pollution in their jurisdictions. ARB staff will also continue to provide updated technical information as it becomes available.

Our recommendations are as specific as possible given the nature of the available data. In some cases, like refineries, we suggest that the siting of new sensitive land uses should be avoided immediately downwind. However, we leave definition of the size of this area to local agencies based on facility specific considerations. Also, project design that would reduce air pollution exposure may be part of the picture and we encourage consultation with air agencies on this subject.

In developing the recommendations, our first consideration was the adequacy of the data available for an air pollution source category. Using that data, we assessed whether we could reasonably characterize the relative exposure and health risk from a proximity standpoint. That screening provided the list of air pollution sources that we were able to address with specific recommendations. We also considered the practical implications of making hard and fast recommendations where the potential impact area is large, emissions will be reduced with time, and air agencies are in the process of looking at options for additional emission control. In the end, we tailored our recommendations to minimize the highest exposures for each source category independently. Due to the large variability in relative risk in the source categories, we chose not to apply

a uniform, quantified risk threshold as is typically done in air quality permitting programs. Instead, because these guidelines are not regulatory or binding on local agencies, we took a more qualitative approach in developing the distance-based recommendations.

Where possible, we recommend a minimum separation between a new sensitive land use and known air pollution risks. In other cases, we acknowledge that the existing health risk is too high in a relatively large area, that air agencies are working to reduce that risk, and that in the meantime, we recommend keeping new sensitive land uses out of the highest exposure areas. However, it is critical to note that our implied identification of the high exposure areas for these sources does not mean that the risk in the remaining impact area is insignificant. Rather, we hope this document will bring further attention to the potential health risk throughout the impact area and help garner support for our ongoing efforts to reduce health risk associated with air pollution sources. Areas downwind of major ports, rail yards, and other inter-modal transportation facilities are prime examples.

We developed these recommendations as a means to share important public health information. The underlying data are publicly available and referenced in this document. We also describe our rationale and the factors considered in developing each recommendation, including data limitations and uncertainties. These recommendations are advisory and should not be interpreted as defined “buffer zones.” We recognize the opportunity for more detailed site-specific analyses always exists, and that there is no “one size fits all” solution to land use planning.

As California continues to grow, we collectively have the opportunity to use all the information at hand to avoid siting scenarios that may pose a health risk. As part of ARB’s focus on communities and children’s health, we encourage land use agencies to apply these recommendations and work more closely with air agencies. We also hope that this document will help educate a wider audience about the value of preventative action to reduce environmental exposures to air pollution.



## **1. ARB Recommendations on Siting New Sensitive Land Uses**

Protecting California's communities and our children from the health effects of air pollution is one of the most fundamental goals of state and local air pollution control programs. Our focus on children reflects their special vulnerability to the health impacts of air pollution. Other vulnerable populations include the elderly, pregnant women, and those with serious health problems affected by air pollution. With this document, we hope to more effectively engage local land use agencies as partners in our efforts to reduce health risk from air pollution in all California communities.

Later sections emphasize the need to strengthen the connection between air quality and land use in both planning and permitting processes. Because the siting process for many, but not all air pollution sources involves permitting by local air districts, there is an opportunity for interagency coordination where the proposed location might pose a problem. To enhance the evaluation process from a land use perspective, section 4 includes recommended project related questions to help screen for potential proximity related issues.

Unlike industrial and other stationary sources of air pollution, the siting of new homes or day care centers does not require an air quality permit. Because these situations fall outside the air quality permitting process, it is especially important that land use agencies be aware of potential air pollution impacts.

The following recommendations address the issue of siting "sensitive land uses" near specific sources of air pollution; namely:

- High traffic freeways and roads
- Distribution centers
- Rail yards
- Ports
- Refineries
- Chrome plating facilities
- Dry cleaners
- Large gas dispensing facilities

The recommendations for each category include a summary of key information and guidance on what to avoid from a public health perspective.

*Sensitive individuals refer to those segments of the population most susceptible to poor air quality (i.e., children, the elderly, and those with pre-existing serious health problems affected by air quality). Land uses where sensitive individuals are most likely to spend time include schools and schoolyards, parks and playgrounds, daycare centers, nursing homes, hospitals, and residential communities (sensitive sites or sensitive land uses).*

We are characterizing sensitive land uses as simply as we can by using the example of residences, schools, day care centers, playgrounds, and medical facilities. However, a variety of facilities are encompassed. For example, residences can include houses, apartments, and senior living complexes. Medical facilities can include hospitals, convalescent homes, and health clinics. Playgrounds could be play areas associated with parks or community centers.

In developing these recommendations, ARB first considered the adequacy of the data available for each air pollution source category. We assessed whether we could generally characterize the relative exposure and health risk from a proximity standpoint. The documented non-cancer health risks include triggering of asthma attacks, heart attacks, and increases in daily mortality and hospitalization for heart and respiratory diseases. These health impacts are well documented in epidemiological studies, but less easy to quantify from a particular air pollution source. Therefore, the cancer health impacts are used in this document to provide a picture of relative risk. This screening process provided the list of source categories we were able to address with specific recommendations. In evaluating the available information, we also considered the practical implications of making hard and fast recommendations where the potential impact area is large, emissions will be reduced with time, and air agencies are in the process of looking at options for additional emission control. Due to the large variability in relative risk between the source categories, we chose not to apply a uniform, quantified risk threshold as is typically done in regulatory programs. Therefore, in the end, we tailored our recommendations to minimize the highest exposures for each source category independently. Additionally, because this guidance is not regulatory or binding on local agencies, we took a more qualitative approach to developing distance based recommendations.

Where possible, we recommend a minimum separation between new sensitive land uses and existing sources. However, this is not always possible, particularly where there is an elevated health risk over large geographical areas. Areas downwind of ports and rail yards are prime examples. In such cases, we recommend doing everything possible to avoid locating sensitive receptors within the highest risk zones. Concurrently, air agencies and others will be working to reduce the overall risk through controls and measures within their scope of authority.

The recommendations were developed from the standpoint of siting new sensitive land uses. Project-specific data for new and existing air pollution sources are available as part of the air quality permitting process. Where such information is available, it should be used. Our recommendations are designed to fill a gap where information about existing facilities may not be readily available. These recommendations are only guidelines and are not designed to substitute for more specific information if it exists.

A summary of our recommendations is shown in Table 1-1. The basis and references<sup>1</sup> supporting each of these recommendations, including health studies, air quality modeling and monitoring studies is discussed below beginning with freeways and summarized in Table 1-2. As new information becomes available, it will be included on ARB's community health web page.

---

<sup>1</sup>Detailed information on these references are available on ARB's website at: <http://www.ARB.ca.gov/ch/landuse.htm>.

**Table 1-1**

**Recommendations on Siting New Sensitive Land Uses  
Such As Residences, Schools, Daycare Centers, Playgrounds, or Medical  
Facilities\***

<b>Source Category</b>	<b>Advisory Recommendations</b>
Freeways and High-Traffic Roads	<ul style="list-style-type: none"> <li>• Avoid siting new sensitive land uses within 500 feet of a freeway, urban roads with 100,000 vehicles/day, or rural roads with 50,000 vehicles/day.</li> </ul>
Distribution Centers	<ul style="list-style-type: none"> <li>• Avoid siting new sensitive land uses within 1,000 feet of a distribution center (that accommodates more than 100 trucks per day, more than 40 trucks with operating transport refrigeration units (TRUs) per day, or where TRU unit operations exceed 300 hours per week).</li> <li>• Take into account the configuration of existing distribution centers and avoid locating residences and other new sensitive land uses near entry and exit points.</li> </ul>
Rail Yards	<ul style="list-style-type: none"> <li>• Avoid siting new sensitive land uses within 1,000 feet of a major service and maintenance rail yard.</li> <li>• Within one mile of a rail yard, consider possible siting limitations and mitigation approaches.</li> </ul>
Ports	<ul style="list-style-type: none"> <li>• Avoid siting of new sensitive land uses immediately downwind of ports in the most heavily impacted zones. Consult local air districts or the ARB on the status of pending analyses of health risks.</li> </ul>
Refineries	<ul style="list-style-type: none"> <li>• Avoid siting new sensitive land uses immediately downwind of petroleum refineries. Consult with local air districts and other local agencies to determine an appropriate separation.</li> </ul>
Chrome Platers	<ul style="list-style-type: none"> <li>• Avoid siting new sensitive land uses within 1,000 feet of a chrome plater.</li> </ul>
Dry Cleaners Using Perchloro-ethylene	<ul style="list-style-type: none"> <li>• Avoid siting new sensitive land uses within 300 feet of any dry cleaning operation. For operations with two or more machines, provide 500 feet. For operations with 3 or more machines, consult with the local air district.</li> <li>• Do not site new sensitive land uses in the same building with perc dry cleaning operations.</li> </ul>
Gasoline Dispensing Facilities	<ul style="list-style-type: none"> <li>• Avoid siting new sensitive land uses within 300 feet of a large gas station (defined as a facility with a throughput of 3.6 million gallons per year or greater). A 50 foot separation is recommended for typical gas dispensing facilities.</li> </ul>

**\*Notes:**

- These recommendations are advisory. Land use agencies have to balance other considerations, including housing and transportation needs, economic development priorities, and other quality of life issues.

- Recommendations are based primarily on data showing that the air pollution exposures addressed here (i.e., localized) can be reduced as much as 80% with the recommended separation.
- The relative risk for these categories varies greatly (see Table 1-2). To determine the actual risk near a particular facility, a site-specific analysis would be required. Risk from diesel PM will decrease over time as cleaner technology phases in.
- These recommendations are designed to fill a gap where information about existing facilities may not be readily available and are not designed to substitute for more specific information if it exists. The recommended distances take into account other factors in addition to available health risk data (see individual category descriptions).
- Site-specific project design improvements may help reduce air pollution exposures and should also be considered when siting new sensitive land uses.
- This table does not imply that mixed residential and commercial development in general is incompatible. Rather it focuses on known problems like dry cleaners using perchloroethylene that can be addressed with reasonable preventative actions.
- A summary of the basis for the distance recommendations can be found in Table 1-2.



**Table 1-2**

**Summary of Basis for Advisory Recommendations**

Source Category	Range of Relative Cancer Risk <sup>1,2</sup>	Summary of Basis for Advisory Recommendations
Freeways and High-Traffic Roads	300 – 1,700	<ul style="list-style-type: none"> <li>In traffic-related studies, the additional non-cancer health risk attributable to proximity was seen within 1,000 feet and was strongest within 300 feet. California freeway studies show about a 70% drop off in particulate pollution levels at 500 feet.</li> </ul>
Distribution Centers <sup>3</sup>	Up to 500	<ul style="list-style-type: none"> <li>Because ARB regulations will restrict truck idling at distribution centers, transport refrigeration unit (TRU) operations are the largest onsite diesel PM emission source followed by truck travel in and out of distribution centers.</li> <li>Based on ARB and South Coast District emissions and modeling analyses, we estimate an 80 percent drop-off in pollutant concentrations at approximately 1,000 feet from a distribution center.</li> </ul>
Rail Yards	Up to 500	<ul style="list-style-type: none"> <li>The air quality modeling conducted for the Roseville Rail Yard Study predicted the highest impact is within 1,000 feet of the Yard, and is associated with service and maintenance activities. The next highest impact is between a half to one mile of the Yard, depending on wind direction and intensity.</li> </ul>
Ports	Studies underway	<ul style="list-style-type: none"> <li>ARB will evaluate the impacts of ports and develop a new comprehensive plan that will describe the steps needed to reduce public health impacts from port and rail activities in California. In the interim, a general advisory is appropriate based on the magnitude of diesel PM emissions associated with ports.</li> </ul>
Refineries	Under 10	<ul style="list-style-type: none"> <li>Risk assessments conducted at California refineries show risks from air toxics to be under 10 chances of cancer per million.<sup>4</sup></li> <li>Distance recommendations were based on the amount and potentially hazardous nature of many of the pollutants released as part of the refinery process, particularly during non-routine emissions releases.</li> </ul>
Chrome Platers	10-100	<ul style="list-style-type: none"> <li>ARB modeling and monitoring studies show localized risk of hexavalent chromium diminishing significantly at 300 feet. There are data limitations in both the modeling and monitoring studies. These include variability of plating activities and uncertainty of emissions such as fugitive dust. Hexavalent chromium is one of the most potent toxic air contaminants. Considering these factors, a distance of 1,000 feet was used as a precautionary measure.</li> </ul>
Dry Cleaners Using Perchloroethylene (perc)	15-150	<ul style="list-style-type: none"> <li>Local air district studies indicate that individual cancer risk can be reduced by as much as 75 percent by establishing a 300 foot separation between a sensitive land use and a one-machine perc dry cleaning operation. For larger operations (2 machines or more), a separation of 500 feet can reduce risk by over 85 percent.</li> </ul>

Source Category	Range of Relative Cancer Risk <sup>1,2</sup>	Summary of Basis for Advisory Recommendations
Gasoline Dispensing Facilities (GDF) <sup>5</sup>	<p>Typical GDF: Less than 10</p> <p>Large GDF: Between Less than 10 and 120</p>	<ul style="list-style-type: none"> <li>Based on the CAPCOA Gasoline Service Station Industry-wide Risk Assessment Guidelines, most typical GDFs (less than 3.6 million gallons per year) have a risk of less than 10 at 50 feet under urban air dispersion conditions. Over the last few years, there has been a growing number of extremely large GDFs with sales over 3.6 and as high as 19 million gallons per year. Under rural air dispersion conditions, these large GDFs can pose a larger risk at a greater distance.</li> </ul>

<sup>1</sup>For cancer health effects, risk is expressed as an estimate of the increased chances of getting cancer due to facility emissions over a 70-year lifetime. This increase in risk is expressed as chances in a million (e.g., 10 chances in a million).

<sup>2</sup>The estimated cancer risks are a function of the proximity to the specific category and were calculated independent of the regional health risk from air pollution. For example, the estimated regional cancer risk from air toxics in the Los Angeles region (South Coast Air Basin) is approximately 1,000 in a million.

<sup>3</sup>Analysis based on refrigerator trucks.

<sup>4</sup>Although risk assessments performed by refineries indicate they represent a low cancer risk, there is limited data on non-cancer effects of pollutants that are emitted from these facilities. Refineries are also a source of non-routine emissions and odors.

<sup>5</sup>A typical GDF in California dispenses under 3.6 million gallons of gasoline per year. The cancer risk for this size facility is likely to be less than 10 in a million at the fence line under urban air dispersion conditions.

A large GDF has fuel throughputs that can range from 3.6 to 19 million gallons of gasoline per year. The upper end of the risk range (i.e., 120 in a million) represents a hypothetical worst case scenario for an extremely large GDF under rural air dispersion conditions.

## **Freeways and High Traffic Roads**

Air pollution studies indicate that living close to high traffic and the associated emissions may lead to adverse health effects beyond those associated with regional air pollution in urban areas. Many of these epidemiological studies have focused on children. A number of studies identify an association between adverse non-cancer health effects and living or attending school near heavily traveled roadways (see findings below). These studies have reported associations between residential proximity to high traffic roadways and a variety of respiratory symptoms, asthma exacerbations, and decreases in lung function in children.

One such study that found an association between traffic and respiratory symptoms in children was conducted in the San Francisco Bay Area. Measurements of traffic-related pollutants showed concentrations within 300 meters (approximately 1,000 feet) downwind of freeways were higher than regional values. Most other studies have assessed exposure based on proximity factors such as distance to freeways or traffic density.

These studies linking traffic emissions with health impacts build on a wealth of data on the adverse health effects of ambient air pollution. The data on the effects of proximity to traffic-related emissions provides additional information that can be used in land use siting and regulatory actions by air agencies. The key observation in these studies is that close proximity increases both exposure and the potential for adverse health effects. Other effects associated with traffic emissions include premature death in elderly individuals with heart disease.

### **Key Health Findings**

- Reduced lung function in children was associated with traffic density, especially trucks, within 1,000 feet and the association was strongest within 300 feet. (Brunekreef, 1997)
- Increased asthma hospitalizations were associated with living within 650 feet of heavy traffic and heavy truck volume. (Lin, 2000)
- Asthma symptoms increased with proximity to roadways and the risk was greatest within 300 feet. (Venn, 2001)
- Asthma and bronchitis symptoms in children were associated with proximity to high traffic in a San Francisco Bay Area community with good overall regional air quality. (Kim, 2004)
- A San Diego study found increased medical visits in children living within 550 feet of heavy traffic. (English, 1999)

In these and other proximity studies, the distance from the roadway and truck traffic densities were key factors affecting the strength of the association with adverse health effects. In the above health studies, the association of traffic-related emissions with adverse health effects was seen within 1,000 feet and was

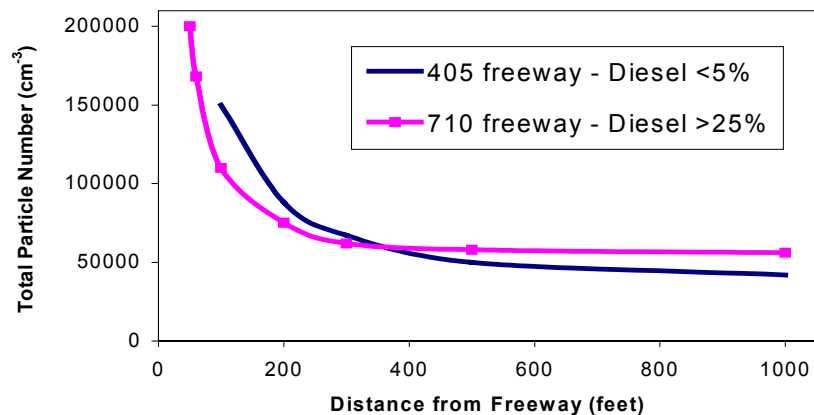
strongest within 300 feet. This demonstrates that the adverse effects diminished with distance.

In addition to the respiratory health effects in children, proximity to freeways increases potential cancer risk and contributes to total particulate matter exposure. There are three carcinogenic toxic air contaminants that constitute the majority of the known health risk from motor vehicle traffic – diesel particulate matter (diesel PM) from trucks, and benzene and 1,3-butadiene from passenger vehicles. On a typical urban freeway (truck traffic of 10,000-20,000/day), diesel PM represents about 70 percent of the potential cancer risk from the vehicle traffic. Diesel particulate emissions are also of special concern because health studies show an association between particulate matter and premature mortality in those with existing cardiovascular disease.

### Distance Related Findings

A southern California study (Zhu, 2002) showed measured concentrations of vehicle-related pollutants, including ultra-fine particles, decreased dramatically within approximately 300 feet of the 710 and 405 freeways. Another study looked at the validity of using distance from a roadway as a measure of exposure

**Figure 1-1  
Decrease In Concentration of Freeway Diesel PM Emissions  
With Distance**



to traffic related air pollution (Knape, 1999). This study showed that concentrations of traffic related pollutants declined with distance from the road, primarily in the first 500 feet.

These findings are consistent with air quality modeling and risk analyses done by ARB staff that show an estimated range of potential cancer risk that decreases with distance from freeways. The estimated risk varies with the local meteorology, including wind pattern. As an example, at 300 feet downwind from a freeway (Interstate 80) with truck traffic of 10,000 trucks per day, the potential cancer risk was as high as 100 in one million (ARB Roseville Rail Yard Study). The cancer health risk at 300 feet on the upwind side of the freeway was much

less. The risk at that distance for other freeways will vary based on local conditions – it may be higher or lower. However, in all these analyses the relative exposure and health risk dropped substantially within the first 300 feet. This phenomenon is illustrated in Figure 1-1.

State law restricts the siting of new schools within 500 feet of a freeway, urban roadways with 100,000 vehicles/day, or rural roadways with 50,000 vehicles with some exceptions.<sup>2</sup> However, no such requirements apply to the siting of residences, day care centers, playgrounds, or medical facilities. The available data show that exposure is greatly reduced at approximately 300 feet. In the traffic-related studies the additional health risk attributable to the proximity effect was strongest within 1,000 feet.

The combination of the children's health studies and the distance related findings suggests that it is important to avoid exposing children to elevated air pollution levels immediately downwind of freeways and high traffic roadways. These studies suggest a substantial benefit to a 500-foot separation.

The impact of traffic emissions is on a gradient that at some point becomes indistinguishable from the regional air pollution problem. As air agencies work to reduce the underlying regional health risk from diesel PM and other pollutants, the impact of proximity will also be reduced. In the meantime, as a preventative measure, we hope to avoid exposing more children and other vulnerable individuals to the highest concentrations of traffic-related emissions.

### Recommendation

- Avoid siting new sensitive land uses within 500 feet of a freeway, urban roads with 100,000 vehicles/day, or rural roads with 50,000 vehicles/day.

### References

- Brunekreef, B. et al. "Air pollution from truck traffic and lung function in children living near motorways." Epidemiology. 1997; 8:298-303
- Lin, S. et al. "Childhood asthma hospitalization and residential exposure to state route traffic." Environ Res. 2002;88:73-81
- Venn. et al. "Living near a main road and the risk of wheezing illness in children." American Journal of Respiratory and Critical Care Medicine. 2001; Vol.164, pp. 2177-2180
- Kim, J. et al. "Traffic-related air pollution and respiratory health: East Bay Children's Respiratory Health Study." American Journal of Respiratory and Critical Care Medicine 2004; Vol. 170. pp. 520-526

---

<sup>2</sup> Section 17213 of the California Education Code and section 21151.8 of the California Public Resources Code. See also Appendix E for a description of special processes that apply to school siting.

- Zhu, Y et al. "Study of Ultra-Fine Particles Near A Major Highway With Heavy-Duty Diesel Traffic." Atmospheric Environment. 2002 ; 36:4323-4335
- Knape, M. "Traffic related air pollution in city districts near motorways." The Science of the Total Environment. 1999; 235:339-341
- *Roseville Rail Yard Study*. ARB (October 2004)
- *ARB Diesel Risk Reduction Plan*. (2000)
- Delfino RJ "Epidemiologic Evidence for Asthma and Exposure to Air Toxics: Linkages Between Occupational, Indoor, and Community Air Pollution Research." Environmental Health Perspectives. (2002) 110 (supplement 4): 573-589
- English P., Neutra R., Scalf R. Sullivan M. Waller L. Zhu L. "Examining Associations Between Childhood Asthma and Traffic Flow Using a Geographic Information System." (1999) Environmental Health Perspectives 107(9): 761-767

### **Distribution Centers**

Distribution centers or warehouses are facilities that serve as a distribution point for the transfer of goods. Such facilities include cold storage warehouses, goods transfer facilities, and inter-modal facilities such as ports. These operations involve trucks, trailers, shipping containers, and other equipment with diesel engines. A distribution center can be comprised of multiple centers or warehouses within an area. The size can range from several to hundreds of acres, involving a number of different transfer operations and long waiting periods. A distribution center can accommodate hundreds of diesel trucks a day that deliver, load, and/or unload goods up to seven days a week. To the extent that these trucks are transporting perishable goods, they are equipped with diesel-powered transport refrigeration units (TRUs) or TRU generator sets.

The activities associated with delivering, storing, and loading freight produces diesel PM emissions. Although TRUs have relatively small diesel-powered engines, in the normal course of business, their emissions can pose a significant health risk to those nearby. In addition to onsite emissions, truck travel in and out of distribution centers contributes to the local pollution impact.

ARB is working to reduce diesel PM emissions through regulations, financial incentives, and enforcement programs. In 2004, ARB adopted two airborne toxic control measures that will reduce diesel PM emissions associated with distribution centers. The first will limit nonessential (or unnecessary) idling of diesel-fueled commercial vehicles, including those entering from other states or countries. This statewide measure, effective in 2005, prohibits idling of a vehicle more than five minutes at any one location.<sup>3</sup> The elimination of unnecessary idling will reduce the localized impacts caused by diesel PM and other air toxics

---

<sup>3</sup> For further information on the Anti-Idling ATCM, please click on:  
<http://www.arb.ca.gov/toxics/idling/outreach/factsheet.pdf>

in diesel vehicle exhaust. This should be a very effective new strategy for reducing diesel PM emissions at distribution centers as well as other locations.

The second measure requires that TRUs operating in California become cleaner over time. The measure establishes in-use performance standards for existing TRU engines that operate in California, including out-of-state TRUs. The requirements are phased-in beginning in 2008, and extend to 2019.<sup>4</sup>

ARB also operates a smoke inspection program for heavy-duty diesel trucks that focuses on reducing truck emissions in California communities. Areas with large numbers of distribution centers are a high priority.

### Key Health Findings

Diesel PM has been identified by ARB as a toxic air contaminant and represents 70 percent of the known potential cancer risk from air toxics in California. Diesel PM is an important contributor to particulate matter air pollution. Particulate matter exposure is associated with premature mortality and health effects such as asthma exacerbation and hospitalization due to aggravating heart and lung disease.

### Distance Related Findings

Although distribution centers are located throughout the state, they are usually clustered near transportation corridors, and are often located in or near population centers. Diesel PM emissions from associated delivery truck traffic and TRUs at these facilities may result in elevated diesel PM concentrations in neighborhoods surrounding those sites. Because ARB regulations will restrict truck idling at distribution centers, the largest continuing onsite diesel PM emission source is the operation of TRUs. Truck travel in and out of distribution centers also contributes to localized exposures, but specific travel patterns and truck volumes would be needed to identify the exact locations of the highest concentrations.

As part of the development of ARB's regulation for TRUs, ARB staff performed air quality modeling to estimate exposure and the associated potential cancer risk of onsite TRUs for a typical distribution center. For an individual person, cancer risk estimates for air pollution are commonly expressed as a probability of developing cancer from a lifetime (i.e., 70 years) of exposure. These risks were calculated independent of regional risk. For example, the estimated regional cancer risk from air toxics in the Los Angeles region (South Coast Air Basin) is approximately 1,000 additional cancer cases per one million population.

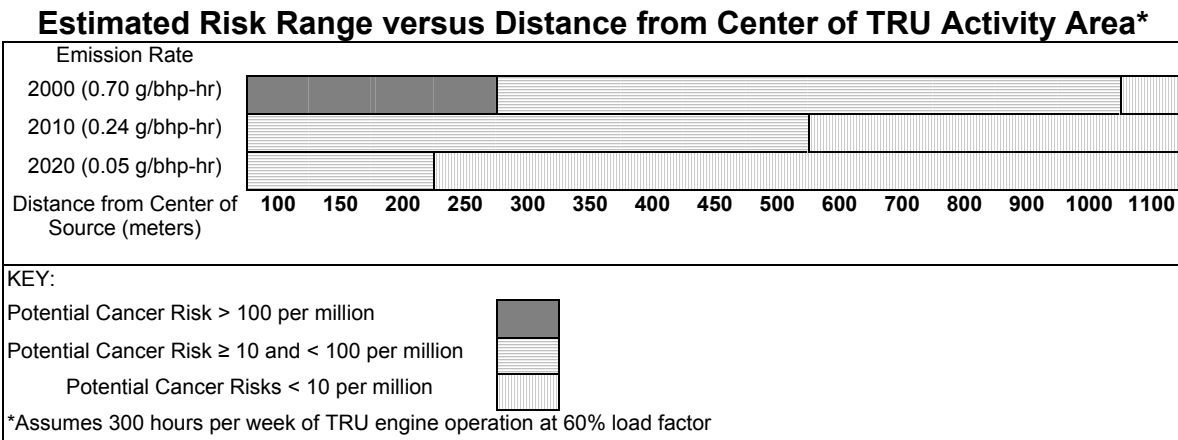
---

<sup>4</sup> For further information on the Transport Refrigeration Unit ATCM, please click on: <http://www.arb.ca.gov/diesel/documents/trufa.pdf>

The diesel PM emissions from a facility are dependent on the size (horsepower), age, and number of engines, emission rates, the number of hours the truck engines and/or TRUs operate, distance, and meteorological conditions at the site. This assessment assumes a total on-site operating time for all TRUs of 300 hours per week. This would be the equivalent of 40 TRU-equipped trucks a day, each loading or unloading on-site for one hour, 12 hours a day and seven days a week.

As shown in Figure 1-2 below, at this estimated level of activity and assuming a current fleet diesel PM emission rate, the potential cancer risk would be over 100 in a million at 800 feet from the center of the TRU activity. The estimated potential cancer risk would be in the 10 to 100 per million range between 800 to 3,300 feet and fall off to less than 10 per million at approximately 3,600 feet. However with the implementation of ARB’s regulation on TRUs, the risk will be significantly reduced.<sup>5</sup> We have not conducted a risk assessment for distribution centers based on truck traffic alone, but on an emissions basis, we would expect similar risks for a facility with truck volumes in the range of 100 per day.

**Figure 1-2**



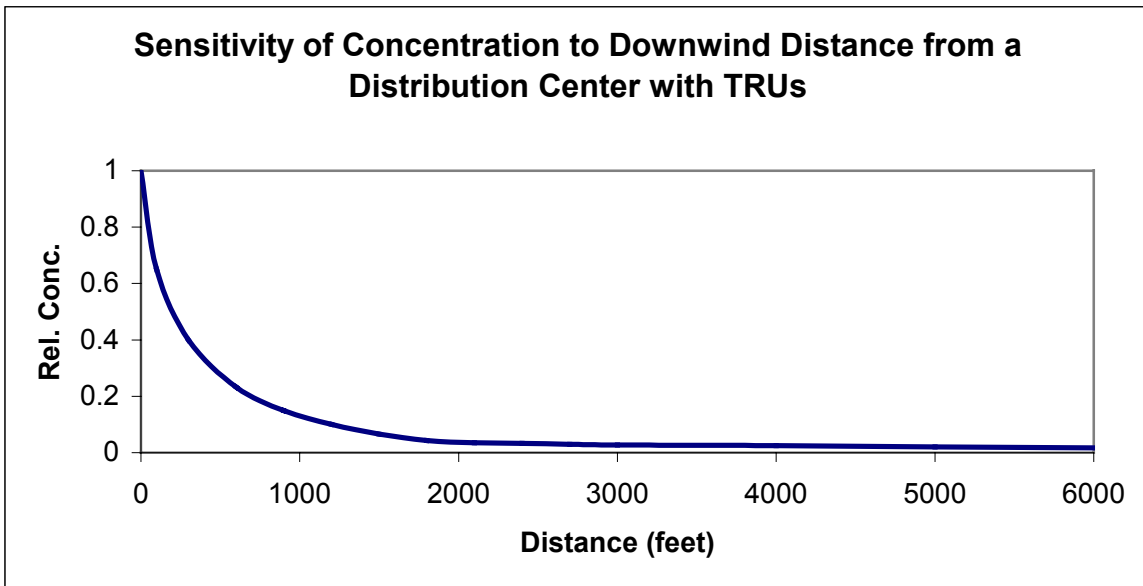
The estimated potential cancer risk level in Figure 1-2 is based on a number of assumptions that may not reflect actual conditions for a specific site. For example, increasing or decreasing the hours of diesel engine operations would change the potential risk levels. Meteorological and other facility specific parameters can also impact the results. Therefore, the results presented here are not directly applicable to any particular facility or operation. Rather, this information is intended to provide an indication as to the potential relative levels of risk that may be observed from operations at distribution centers. As shown in Figure 1-2, the estimated risk levels will decrease over time as lower-emitting diesel engines are used.

<sup>5</sup> These risk values assume an exposure duration of 70 years for a nearby resident and uses the methodology specified in the 2003 OEHHA health risk assessment guidelines.



Another air modeling analysis, performed by the South Coast Air Quality Management District (South Coast AQMD), evaluated the impact of diesel PM emissions from distribution center operations in the community of Mira Loma in southern California. Based on dispersion of diesel PM emissions from a large distribution center, Figure 1-3 shows the relative pollution concentrations at varying distances downwind. As Figure 1-3 shows, there is about an 80 percent drop off in concentration at approximately 1,000 feet.

**Figure 1-3**  
**Decrease In Relative Concentration of Risk**  
**With Distance**



Both the ARB and the South Coast AQMD analyses indicate that providing a separation of 1,000 feet would substantially reduce diesel PM concentrations and public exposure downwind of a distribution center. While these analyses do not provide specific risk estimates for distribution centers, they provide an indication of the range of risk and the benefits of providing a separation. ARB recommends a separation of 1,000 feet based on the combination of risk analysis done for TRUs and the decrease in exposure predicted with the South Coast AQMD modeling. However, ARB staff plans to provide further information on distribution centers as we collect more data and implement the TRU control measure.

Taking into account the configuration of distribution centers can also reduce population exposure and risk. For example, locating new sensitive land uses away from the main entry and exit points helps to reduce cancer risk and other health impacts.

## Recommendations

- Avoid siting new sensitive land uses within 1,000 feet of a distribution center (that accommodates more than 100 trucks per day, more than 40 trucks with operating TRUs per day, or where TRU unit operations exceed 300 hours per week).
- Take into account the configuration of existing distribution centers and avoid locating residences and other new sensitive land uses near entry and exit points.

## References

- *Airborne Toxic Control Measure To Limit Diesel-Fueled Commercial Motor Vehicle Idling*. ARB (August 20, 2004). Rule effectiveness date awaiting submittal of regulation to the Office of Administration Law.  
<http://www.arb.ca.gov/regact/idling/idling.htm>
- *Revised Staff Report: Initial Statement of Reasons for Proposed Rulemaking. Airborne Toxic Control Measure for In-Use Diesel-Fueled Transport Refrigeration Units (TRU) and TRU Generator Sets, and Facilities Where TRUs Operate*. ARB (October 28, 2003).  
<http://www.arb.ca.gov/regact/trude03/revisor.doc>
- *Health Risk Assessment Guidance for Analyzing Cancer Risks from Mobile Source Diesel Idling Emissions for CEQA Air Quality Analysis*. SCAQMD (August 2003) [http://www.aqmd.gov/ceqa/handbook/diesel\\_analysis.doc](http://www.aqmd.gov/ceqa/handbook/diesel_analysis.doc)
- “*Mira Loma Study: Analysis of the Impact of Diesel Particulate Emissions from Warehouse/Distribution Center Operations*”, PowerPoint presentation. SCAQMD (July 31, 2002)

## Rail Yards

Rail yards are a major source of diesel particulate air pollution. They are usually located near inter-modal facilities, which attract heavy truck traffic, and are often sited in mixed industrial and residential areas. ARB, working with the Placer County air district and Union Pacific Railroad, recently completed a study<sup>6</sup> of the Roseville Rail Yard (Yard) in northern California that focused on the health risk from diesel particulate. A comprehensive emissions analysis and air quality modeling were conducted to characterize the estimated potential cancer risk associated with the facility.

---

<sup>6</sup> To review the study, please click on: <http://www.arb.ca.gov/diesel/documents/rstudy.htm>

The Yard encompasses about 950 acres on a one-quarter mile wide by four-mile long strip of land that parallels Interstate 80. It is surrounded by commercial, industrial, and residential properties. The Yard is one of the largest service and maintenance rail yards in the West with over 30,000 locomotives visiting annually.

Using data provided by Union Pacific Railroad, the ARB determined the number and type of locomotives visiting the Yard annually and what those locomotives were doing - moving, idling, or undergoing maintenance testing. Union Pacific provided the annual, monthly, daily, and hourly locomotive activity in the yard including locomotive movements; routes for arrival, departure, and through trains; and locomotive service and testing. This information was used to estimate the emissions of particulate matter from the locomotives, which was then used to model the potential impacts on the surrounding community.

The key findings of the study are:

- Diesel PM emissions in 2000 from locomotive operations at the Roseville Yard were estimated at about 25 tons per year.
- Of the total diesel PM in the Yard, moving locomotives accounted for about 50 percent, idling locomotives about 45 percent, and locomotive testing about five percent.
- Air quality modeling predicts potential cancer risks greater than 500 in a million (based on 70 years of exposure) in a 10-40 acre area immediately adjacent to the Yard's maintenance operations.
- The risk assessment also showed elevated cancer risk impacting a larger area covering about a 10 by 10 mile area around the Yard.

The elevated concentrations of diesel PM found in the study contribute to an increased risk of cancer and premature death due to cardiovascular disease, and non-cancer health effects such as asthma and other respiratory illnesses. The magnitude of the risk, the general location, and the size of the impacted area depended on the meteorological data used to characterize conditions at the Yard, the dispersion characteristics, and exposure assumptions. In addition to these variables, the nature of locomotive activity will influence a risk characterization at a particular rail yard. For these reasons, the quantified risk estimates in the Roseville Rail Yard Study cannot be directly applied to other rail yards. However, the study does indicate the health risk due to diesel PM from rail yards needs to be addressed. ARB, in conjunction with the U.S. Environmental Protection Agency (U.S. EPA), and local air districts, is working with the rail industry to identify and implement short term, mid-term and long-term mitigation strategies. ARB also intends to conduct a second rail study in southern California to increase its understanding of rail yard operations and the associated public health impacts.

## Key Health Findings

Diesel PM has been identified by ARB as a toxic air contaminant and represents 70 percent of the known potential cancer risk from air toxics in California. Diesel PM is an important contributor to particulate matter air pollution. Particulate matter exposure is associated with premature mortality and health effects such as asthma exacerbation and hospitalization due to aggravating heart and lung disease.

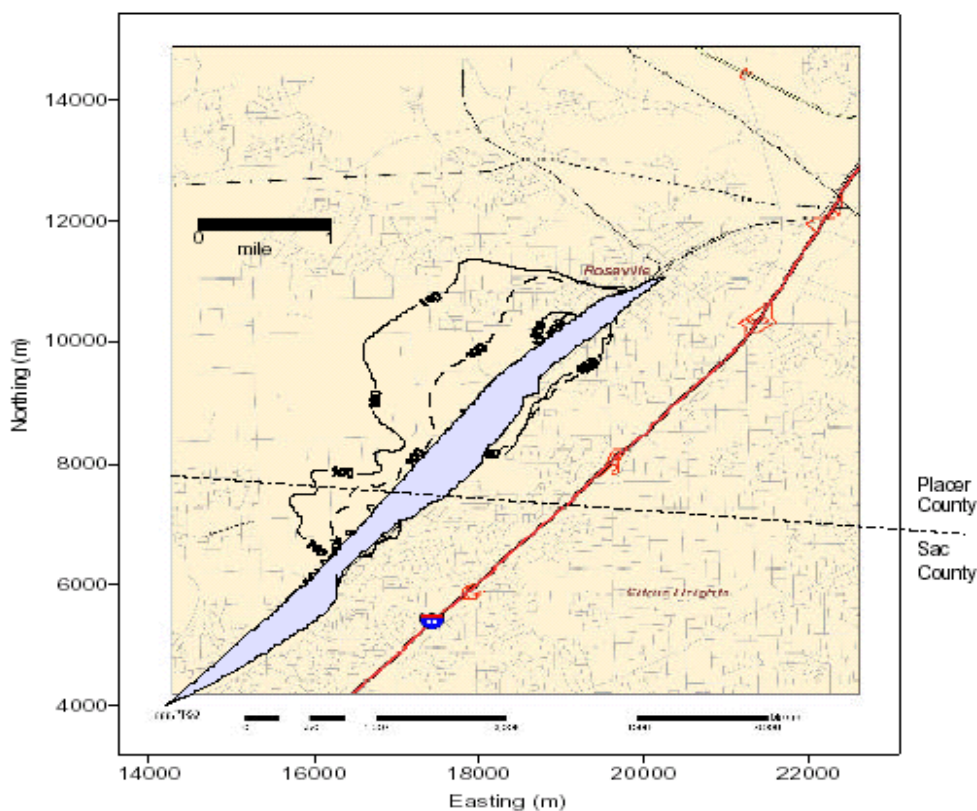
## Distance Related Findings

Two sets of meteorological data were used in the Roseville study because of technical limitations in the data. The size of the impact area was highly dependent on the meteorological data set used. The predicted highest impact area ranged from 10 - 40 acres with the two different meteorological data sets. This area, with risks estimated above 500 in a million, is adjacent to an area that includes a maintenance shop (see Figure 1-4). The high concentration of diesel PM emissions is due to the number of locomotives and nature of activities in this area, particularly idling locomotives.

The area of highest impact is within 1,000 feet of the Yard. The next highest impact zone as defined in the report had a predicted risk between 500 and 100 in one million and extends out between a half to one mile in some spots, depending on which meteorological conditions were assumed. The impact areas are irregular in shape making it difficult to generalize about the impact of distance at a particular location. However, the Roseville Rail Yard Study clearly indicates that the localized health risk is high, the impact area is large, and mitigation of the locomotive diesel PM emissions is needed.

For facilities like rail yards and ports, the potential impact area is so large that the real solution is to substantially reduce facility emissions. However, land use planners can avoid encroaching upon existing rail facilities and those scheduled for expansion. We also recommend that while air agencies tackle this problem, land use planners try not to add new sensitive individuals into the highest exposure areas. Finally, we recommend that land use agencies consider the potential health impacts of rail yards in their planning and permitting processes. Additional limitations and mitigation may be feasible to further reduce exposure on a site-specific basis.

**Figure 1-4**  
**Estimated Cancer Risk from the Yard**  
**(100 and 500 in a million risk isopleths)**



Notes: 100/Million Contours: Solid Line – Roseville Met Data; Dashed Line-McClellan Met Data, Urban Dispersion Coefficients, 80<sup>th</sup> Percentile Breathing Rate, All Locomotives' Activities (23 TPY), 70-Year Exposure

### Recommendation

- Avoid siting new sensitive land uses within 1,000 feet of a major service and maintenance rail yard<sup>7</sup>.
- Within one mile of a rail yard, consider possible siting limitations and mitigation approaches.

### References

- *Roseville Rail Yard Study*. ARB (2004)

<sup>7</sup> The rail yard risk analysis was conducted for the Union Pacific rail yard in Roseville, California. This rail yard is one of the largest in the state. There are other rail yards in California with comparable levels of activity that should be considered "major" for purposes of this Handbook.

## Ports

Air pollution from maritime port activities is a growing concern for regional air quality as well as air quality in nearby communities. The primary air pollutant associated with port operations is directly emitted diesel particulate. Port-related activities also result in emissions that form ozone and secondary particulate in the atmosphere. The emission sources associated with ports include diesel engine-powered ocean-going ships, harbor craft, cargo handling equipment, trucks, and locomotives. The size and concentration of these diesel engines makes ports one of the biggest sources of diesel PM in the state. For that reason, ARB has made it a top priority to reduce diesel PM emissions at the ports, in surrounding communities, and throughout California.

International, national, state, and local government collaboration is critical to reducing port emissions based on both legal and practical considerations. For example, the International Maritime Organization (IMO) and the U.S. EPA establish emission standards for ocean-going vessels and U.S.-flagged harbor craft, respectively. ARB is pursuing further federal actions to tighten these standards. In addition, ARB and local air districts are reducing emissions from ports through a variety of approaches. These include: incentive programs to fund cleaner engines, enhanced enforcement of smoke emissions from ships and trucks, use of dockside electricity instead of diesel engines, cleaner fuels for ships, harbor craft, locomotives, and reduced engine idling. The two ATCMs that limit truck idling and reduce emissions from TRUs (discussed under “Distribution Centers”) also apply to ports.

ARB is also developing several other regulations that will reduce port-related emissions. One rule would require ocean-going ships to use a cleaner marine diesel fuel to power auxiliary engines while in California coastal waters and at dock. Ships that frequently visit California ports would also be required to further reduce their emissions. ARB has adopted a rule that would require harbor craft to use the same cleaner diesel fuel used by on-road trucks in California. In 2005, ARB will consider a rule that would require additional controls for in-use harbor craft, such as the use of add-on emission controls and accelerated turnover of older engines.

## Key Health Findings

Port activities are a major source of diesel PM. Diesel PM has been identified by ARB as a toxic air contaminant and represents 70 percent of the known potential cancer risk from air toxics in California. Diesel PM is an important contributor to particulate matter air pollution. Particulate matter exposure is associated with premature mortality and health effects such as asthma exacerbation and hospitalization due to aggravating heart and lung disease.

## Distance Related Findings

The Ports of Los Angeles and Long Beach provide an example of the emissions impact of port operations. A comprehensive emissions inventory was completed in June 2004. These ports combined are one of the world's largest and busiest seaports. Located in San Pedro Bay, about 20 miles south of downtown Los Angeles, the port complex occupies approximately 16 square miles of land and water. Port activities include five source categories that produce diesel emissions. These are ocean-going vessels, harbor craft, cargo handling equipment, railroad locomotives, and heavy-duty trucks.

The baseline emission inventory provides emission estimates for all major air pollutants. This analysis focuses on diesel PM from in-port activity because these emissions have the most potential health impact on the areas adjacent to the port. Ocean vessels are the largest overall source of diesel PM related to the ports, but these emissions occur primarily outside of the port in coastal waters, making the impact more regional in nature.

The overall in-port emission inventory for diesel particulate for the ports of Los Angeles and Long Beach is estimated to be 550 tons per year. The emissions fall in the following major categories: ocean-going vessels (17%), harbor craft (25%), cargo handling (47%), railroad locomotive (3%), and heavy duty vehicles (8%). In addition to in-port emissions, ship, rail, and trucking activities also contribute to regional emissions and increase emissions in nearby neighborhoods. Off-port emissions associated with related ship, rail, and trucking activities contribute an additional 680 tons per year of diesel particulate at the Port of Los Angeles alone.

To put this in perspective, the diesel PM emissions estimated for the Roseville Yard in ARB's 2004 study are 25 tons per year. The potential cancer risk associated with these emissions is 100 in one million at a distance of one mile, or one half mile, depending on the data set used. This rail yard covers one and a half square miles. The Los Angeles and Long Beach ports have combined diesel PM emissions of 550 tons per year emitted from a facility that covers a much larger area - 16 miles. The ports have about twice the emission density of the rail yard - 34 tons per year per square mile compared to 16 tons per year per square mile. However, while this general comparison is illustrative of the overall size of the complex, a detailed air quality modeling analysis would be needed to assess the potential health impact on specific downwind areas near the ports.

ARB is in the process of evaluating the various port-related emission sources from the standpoint of existing emissions, growth forecasts, new control options, regional air quality impacts, and localized health risk. A number of public processes - both state and local - are underway to address various aspects of these issues. Until more of these analyses are complete, there is little basis for recommending a specific separation between new sensitive land uses and ports.

For example, the type of data we have showing the relationship between air pollutant concentrations and distance from freeways is not yet available.

Also, the complexity of the port facilities makes a site-specific analysis critical. Ports are a concentration of multiple emission sources with differing dispersion and other characteristics. In the case of the Roseville rail yard, we found a high, very localized impact associated with a particular activity, service and maintenance. By contrast, the location, size, and nature of impact areas can be expected to vary substantially for different port activities. For instance, ground level emissions from dockside activities would behave differently from ship stack level emissions.

Nonetheless, on an emissions basis alone, we expect locations downwind of ports to be substantially impacted. For that reason, we recommend that land use agencies track the current assessment efforts, and consider limitations on the siting of new sensitive land uses in areas immediately downwind of ports.

### Recommendations

Avoid siting new sensitive land uses immediately downwind of ports in the most heavily impacted zones. Consult local air districts or the ARB on the status of pending analyses of health risks.

### References

- *Roseville Rail Yard Study*. ARB (2004)
- Final Draft, "*Port-Wide Baseline Air Emissions Inventory*." Port of Los Angeles (June 2004)
- Final Draft, "*2002 Baseline Air Emissions Inventory*." Port of Long Beach (February 2004)

### Petroleum Refineries

A petroleum refinery is a complex facility where crude oil is converted into petroleum products (primarily gasoline, diesel fuel, and jet fuel), which are then transported through a system of pipelines and storage tanks for final distribution by delivery truck to fueling facilities throughout the state. In California, most crude oil is delivered either by ship from Alaska or foreign sources, or is delivered via pipeline from oil production fields within the state. The crude oil then undergoes many complex chemical and physical reactions, which include distillation, catalytic cracking, reforming, and finishing. These refining processes have the potential to emit air contaminants, and are subject to extensive emission controls by district regulations.

As a result of these regulations covering the production, marketing, and use of gasoline and other oil by-products, California has seen significant regional air quality benefits both in terms of cleaner fuels and cleaner operating facilities. In



the 1990s, California refineries underwent significant modifications and modernization to produce cleaner fuels in response to changes in state law. Nevertheless, while residual emissions are small when compared to the total emissions controlled from these major sources, refineries are so large that even small amounts of fugitive, uncontrollable emissions and associated odors from the operations, can be significant. This is particularly the case for communities that may be directly downwind of the refinery. Odors can cause health symptoms such as nausea and headache. Also, because of the size, complexity, and vast numbers of refinery processes onsite, the occasional refinery upset or malfunction can potentially result in acute or short-term health effects to exposed individuals.

### Key Health Findings

Petroleum refineries are large single sources of emissions. For volatile organic compounds (VOCs), eight of the ten largest stationary sources in California are petroleum refineries. For oxides of nitrogen (NO<sub>x</sub>), four of the ten largest stationary sources in California are petroleum refineries. Both of these compounds react in the presence of sunlight to form ozone. Ozone impacts lung function by irritating and damaging the respiratory system. Petroleum refineries are also large stationary sources of both particulate matter under 10 microns in size (PM<sub>10</sub>) and particulate matter under 2.5 microns in size (PM<sub>2.5</sub>). Exposure to particulate matter aggravates a number of respiratory illnesses, including asthma, and is associated with premature mortality in people with existing cardiac and respiratory disease. Both long-term and short-term exposure can have adverse health impacts. Finer particles pose an increased health risk because they can deposit deep in the lung and contain substances that are particularly harmful to human health. NO<sub>x</sub> are also significant contributors to the secondary formation of PM<sub>2.5</sub>.

Petroleum refineries also emit a variety of toxic air pollutants. These air toxics vary by facility and process operation but may include: acetaldehyde, arsenic, antimony, benzene, beryllium, 1,3-butadiene, cadmium compounds, carbonyl sulfide, carbon disulfide, chlorine, dibenzofurans, diesel particulate matter, formaldehyde, hexane, hydrogen chloride, lead compounds, mercury compounds, nickel compounds, phenol, 2,3,7,8 tetrachlorodibenzo-p-dioxin, toluene, and xylenes (mixed) among others. The potential health effects associated with these air toxics can include cancer, respiratory irritation, and damage to the central nervous system, depending on exposure levels.

### Distance Related Findings

Health risk assessments for petroleum refineries have shown risks from toxic air pollutants that have quantifiable health risk values to be around 10 potential cancer cases per million. Routine air monitoring and several air monitoring studies conducted in the San Francisco Bay Area (Crockett) and the South Coast Air Basin (Wilmington) have not identified significant health risks specifically

associated with refineries. However, these studies did not measure diesel PM as no accepted method currently exists, and there are many toxic air pollutants that do not have quantifiable health risk values.

In 2002, ARB published a report on the results of the state and local air district air monitoring done near oil refineries. The purpose of this evaluation was to try to determine how refinery-related emissions might impact nearby communities. This inventory of air monitoring activities included 10 ambient air monitoring stations located near refineries in Crockett and four stations near refineries in Wilmington. These monitoring results did not identify significant increased health risks associated with the petroleum refineries. In 2002-2003, ARB conducted additional monitoring studies in communities downwind of refineries in Crockett and Wilmington. These monitoring results also did not indicate significant increased health risks from the petroleum refineries.

Consequently, there are no air quality modeling or air monitoring data that provides a quantifiable basis for recommending a specific separation between refineries and new sensitive land uses. However, in view of the amount and potentially hazardous nature of many of the pollutants released as part of the refinery process, we believe the siting of new sensitive land uses immediately downwind should be avoided. Land use agencies should consult with the local air district when considering how to define an appropriate separation for refineries within their jurisdiction.

### Recommendations

- Avoid siting new sensitive land uses immediately downwind of petroleum refineries. Consult with local air districts and other local agencies to determine an appropriate separation.

### References

- *Review of Current Ambient Air Monitoring Activities Related to California Bay Area and South Coast Refineries.* ARB (March 2002)  
<http://www.arb.ca.gov/aaqm/qmosqual/special/mldrefinery.pdf>
- *Community Air Quality Monitoring: Special Studies – Crockett.* ARB (September 2004)  
<http://www.arb.ca.gov/ch/communities/studies/crockett/crockett.htm>
- *Wilmington Study - Air Monitoring Results.* ARB (2003)  
<http://www.arb.ca.gov/ch/communities/studies/wilmington/wilmington.htm>

### Chrome Plating Operations

Chrome plating operations rely on the use of the toxic metal hexavalent chromium, and have been subject to ARB and local air district control programs for many years. Regulation of chrome plating operations has reduced statewide emissions substantially. However, due to the nature of chrome plating

operations and the highly toxic nature of hexavalent chromium, the remaining health risk to nearby residents is a continuing concern.

Chrome plating operations convert hexavalent chromium in solution to a chromium metal layer by electroplating, and are categorized based upon the thickness of the chromium metal layer applied. In “decorative plating”, a layer of nickel is first plated over a metal substrate. Following this step, a thin layer of chromium is deposited over the nickel layer to provide a decorative and protective finish, for example, on faucets and automotive wheels. “Hard chrome plating” is a process in which a thicker layer of chromium metal is deposited directly on metal substrates such as engine parts, industrial machinery, and tools to provide greater protection against corrosion and wear.

Hexavalent chromium is emitted into the air when an electric current is applied to the plating bath. Emissions are dependent upon the amount of electroplating done per year and the control requirements. A unit of production referred to as an ampere-hour represents the amount of electroplating produced. Small facilities have an annual production rate of 100,000 – 500,000 ampere-hours, while medium-size facilities may have a production rate of 500,000 to about 3 million ampere-hours. The remaining larger facilities have a range of production rates that can be as high as 80 million ampere-hours.

The control requirements, which reduce emissions from the plating tanks, vary according to the size and type of the operation. Facilities either install add-on pollution control equipment, such as filters and scrubbers, or in-tank controls, such as fume suppressants and polyballs. With this combination of controls, the overall hexavalent chromium emissions have been reduced by over 90 percent. Larger facilities typically have better controls that can achieve efficiencies greater than 99 percent. However, even with stringent controls, the lack of maintenance and good housekeeping practices can lead to problems. And, since the material itself is inherently dangerous, any lapse in compliance poses a significant risk to nearby residents.

A 2002 ARB study in the San Diego community of Barrio Logan measured unexpectedly high concentrations of hexavalent chromium near chrome platers. The facilities were located in a mixed-use area with residences nearby. The study found that fugitive dust laden with hexavalent chromium was an important source of emissions that likely contributed to the elevated cancer risk. Largely as a result of this study, ARB is in the process of updating the current requirements to further reduce the emissions from these facilities.

In December 2004, the ARB adopted an ATCM to reduce emissions of hexavalent chromium and nickel from thermal spraying operations through the installation of best available control technology. The ATCM requires all existing facilities to comply with its requirements by January 1, 2006. New and modified thermal spraying operations must comply upon initial startup. An existing thermal spraying facility may be exempt from the minimum control efficiency

requirements of the ATCM if it is located at least 1,640 feet from the nearest sensitive receptor and emits no more than 0.5 pound per year of hexavalent chromium.<sup>8</sup>

### Key Health Findings

Hexavalent chromium is one of the most toxic air pollutants regulated by the State of California. Hexavalent chromium is a carcinogen and has been identified in worker health studies as causing lung cancer. Exposure to even very low levels of hexavalent chromium should be avoided.

The California Office of Environmental Health Hazard Assessment has found that: 1) many epidemiological studies show a strong association between hexavalent chromium exposure in the work place and respiratory cancer; and 2) all short-term assays reported show that hexavalent chromium compounds can cause damage to human DNA.

Hexavalent chromium when inhaled over a period of many years can cause a variety of non-cancer health effects. These health effects include damage to the nose, blood disorders, lung disease, and kidney damage. The non-cancer health impacts occur with exposures considerably higher than exposures causing significant cancer risks. It is less likely that the public would be exposed to hexavalent chromium at levels high enough to cause these non-cancer health effects. Non-cancer health effects, unlike cancer health effects, have a threshold or exposure level below which non-cancer health effects would not be expected.

### Distance Related Findings

ARB's 2002 Barrio Logan Study measured concentrations of hexavalent chromium in the air near two chrome plating facilities. The study was conducted from December 2001 to May 2002. There were two chrome platers on the street - one decorative and one hard plater. The purpose of the study was to better understand the near source impact of hexavalent chromium emissions. Air monitors were placed at residences next to the platers and at varying distances down the street. The monitors were moved periodically to look at the spatial distribution of the impact. Source testing and facility inspections identified one of the facilities as the likely source.

The first two weeks of monitoring results showed unexpectedly high levels of hexavalent chromium at a number of the monitoring sites. The high concentrations were intermittent. The concentrations ranged from 1 to 22 ng/m<sup>3</sup> compared to the statewide average of 0.1 ng/m<sup>3</sup>. If these levels were to continue for 70 years, the potential cancer risk would be 150 in one million. The highest value was found at an air monitor behind a house adjacent to one of the

---

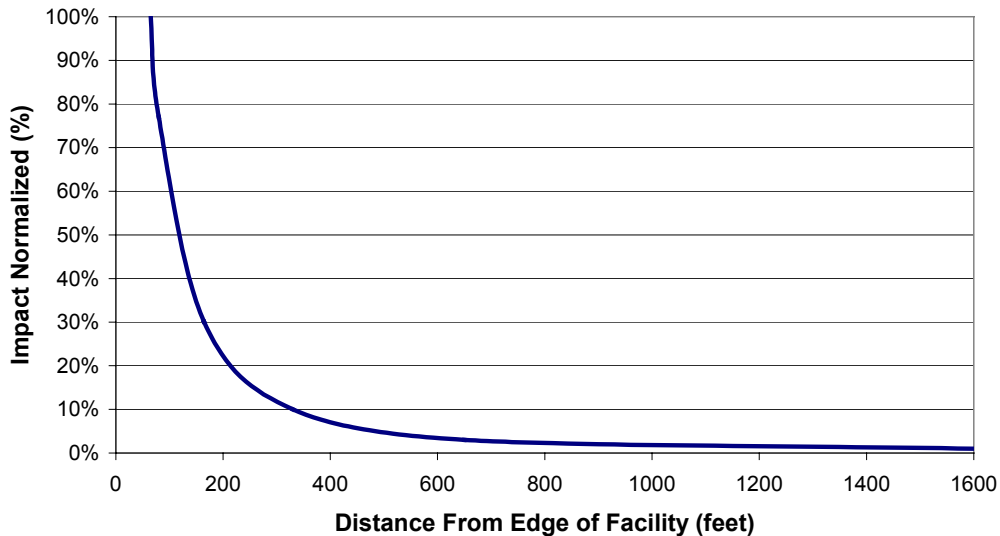
<sup>8</sup> For further information on the ATCM, please refer to:  
<http://www.arb.ca.gov/regact/thermspr/thermalspr.htm>

plating facilities—approximately 30 feet from the back entrance. Lower, but significant concentrations were found at an ambient air monitor 250 feet away.

The monitoring covered a period when the facility was not operating its plating tank. During this period, one of the highest concentrations was measured at an adjacent house. It appears that chromium-laden dust was responsible for high concentrations at this location since there was no plating activity at the time. Dust samples from the facility were tested and found to contain high levels of hexavalent chromium. On the day the highest concentration was measured at the house next door, a monitor 350 feet away from the plater's entrance showed very little impact. Similar proximity effects are shown in ARB modeling studies.

Figure 1-5 shows how the relative health risk varies as a function of distance from a chrome plater. This analysis is based on a medium-sized chrome plater with an annual production rate of 3 million ampere-hours. As shown in Figure 1- 5, the potential health risk drops off rapidly, with over 90 percent reduction in risk within 300 feet. This modeling was done in 2003 as part of a review of ARB's current air toxic control measure for chrome platers and is based on data from a recent ARB survey of chrome platers in California. The emission

**Figure 1-5**  
**Risk vs. Distance From Chrome Plater**  
**(Based on plating tank emissions)**



rates are only for plating operations. Because there are insufficient data available to directly quantify the impacts, the analysis does not include fugitive emissions, which the Barrio Logan analysis indicated could be significant.

Both the ARB Barrio Logan monitoring results and ARB's 2003 modeling analysis suggests that the localized emissions impact of a chrome plater diminishes significantly at 300 feet. However, in developing our recommendation, we also considered the following factors:

- some chrome platers will have higher volumes of plating activity,
- potential dust impacts were not modeled,
- we have only one monitoring study looking at the impact of distance, and,
- hexavalent chromium is one of the most potent toxic air contaminants ARB has identified.

Given these limitations in the analysis, we recommend a separation of 1,000 feet as a precautionary measure. For large chrome platers, site specific information should be obtained from the local air district.

### Recommendation

- Avoid siting new sensitive land uses within 1,000 feet of a chrome plater.

### References

- *Ambient Air Monitoring for Hexavalent Chromium and Metals in Barrio Logan: May 2001 through May 2002.* ARB, Monitoring and Laboratory Division (October 14, 2003)
- *Draft Barrio Logan Report.* ARB, Planning and Technical Support Division (November 2004)
- *Proposed Amendments to the Hexavalent Chromium Control Measure for Decorative and Hard Chrome Plating and Chromic Acid Anodizing Facilities.* ARB (April 1998)
- Murchison, Linda; Suer, Carolyn; Cook, Jeff. *“Neighborhood Scale Monitoring in Barrio Logan,”* (AWMA Annual Conference Proceedings, June 2003)

### **Dry Cleaners Using Perchloroethylene (Perc Dry Cleaners)**

Perchloroethylene (perc) is the solvent most commonly used by the dry cleaning industry to clean clothes or other materials. The ARB and other public health agencies have identified perc as a potential cancer-causing compound. Perc persists in the atmosphere long enough to contribute to both regional air pollution and localized exposures. Perc dry cleaners are the major source of perc emissions in California.

Since 1990, the statewide concentrations and health risk from exposure to perc has dropped over 70 percent. This is due to a number of regulatory requirements on perc dry cleaners and other sources, including degreasing operations, brake cleaners, and adhesives. ARB adopted an Airborne Toxic Control Measure (ATCM) for Perc Emissions from Dry Cleaning Operations in 1993. ARB has also prohibited the use of perc in aerosol adhesives and automotive brake cleaners.

Perc dry cleaners statewide are required to comply with ARB and local air district regulations to reduce emissions. However, even with these controls, some emissions continue to occur. Air quality studies indicate that there is still the potential for significant risks even near well-controlled dry cleaners. The South Coast AQMD has adopted a rule requiring that all new dry cleaners use alternatives to perc and that existing dry cleaners phase out the use of perc by December 2020. Over time, transition to non-toxic alternatives should occur. However, while perc continues to be used, a preventative approach should be taken to siting of new sensitive land uses.

### Key Health Findings

Inhalation of perc may result in both cancer and non-cancer health effects. An assessment by California's Office of Environmental Health Hazard Assessment (OEHHA) concluded that perc is a potential human carcinogen and can cause non-cancer health effects. In addition to the potential cancer risk, the effects of long-term exposure include dizziness, impaired judgment and perception, and damage to the liver and kidneys. Workers have shown signs of liver toxicity following chronic exposure to perc, as well as kidney dysfunction and neurological effects. Non-cancer health effects occur with higher exposure levels than those associated with significant cancer risks. The public is more likely to be exposed to perchloroethylene at levels causing significant cancer risks than to levels causing non-cancer health effects. Non-cancer health effects, unlike cancer health effects, have a threshold or exposure level below which non-cancer health effects would not be expected. The ARB formally identified perc as a toxic air contaminant in October 1991.

One study has determined that inhalation of perc is the predominant route of exposure to infants living in apartments co-located in the same building with a business operating perc dry cleaning equipment. Results of air sampling within co-residential buildings indicate that dry cleaners can cause a wide range of exposures depending on the type and maintenance of the equipment. For example, a well-maintained state-of-the-art system may have risks in the range of 10 in one million, whereas a badly maintained machine with major leaks can have potential cancer risks of thousands in one million.

The California Air Pollution Control Officers Association (CAPCOA) is developing Industry-wide Risk Assessment Guidelines for Perchloroethylene Dry Cleaners which, when published, will provide detailed information on public health risk from exposure to emissions from this source.

### Distance Related Findings

Risk created by perc dry cleaning is dependent on the amount of perc emissions, the type of dry cleaning equipment, proximity to the source, and how the emissions are released and dispersed (e.g., type of ventilation system, stack parameters, and local meteorology). Dry cleaners are often located near

residential areas, and near shopping centers, schools, day-care centers, and restaurants.

The vast majority of dry cleaners in California have one dry cleaning machine per facility. The South Coast AQMD estimates that an average well-controlled dry cleaner uses about 30 to 160 gallons of cleaning solvent per year, with an average of about 100 gallons. Based on these estimates, the South Coast AQMD estimates a potential cancer risk between 25 to 140 in one million at residential locations 75 feet or less from the dry cleaner, with an average of about 80 in one million. The estimate could be as high as 270 in one million for older machines.

CAPCOA's draft industry-wide risk assessment of perc dry cleaning operations indicates that the potential cancer risk for many dry cleaners may be in excess of potential cancer risk levels adopted by the local air districts. The draft document also indicates that, in general, the public's exposure can be reduced by at least 75 percent, by providing a separation distance of about 300 feet from the operation. This assessment is based on a single machine with perc use of about 100 gallons per year. At these distances, the potential cancer risk would be less than 10 potential cases per million for most scenarios.

The risk would be proportionately higher for large, industrial size, dry cleaners. These facilities typically have two or more machines and use 200 gallons or more per year of perc. Therefore, separation distances need to be greater for large dry cleaners. At a distance of 500 feet, the remaining risk for a large plant can be reduced by over 85 percent.

In California, a small number of dry cleaners that are co-located (sharing a common wall, floor, or ceiling) with a residence have the potential to expose the inhabitants of the residence to high levels of perc. However, while special requirements have been imposed on these existing facilities, the potential for exposure still exists. Avoiding these siting situations in the future is an important preventative measure.

Local air districts are a source of information regarding specific dry cleaning operations—particularly for large industrial operations with multiple machines. The 300 foot separation recommended below reflects the most common situation – a dry cleaner with only one machine. While we recommend 500 feet when there are two or more machines, site specific information should be obtained from the local air district for some very large industrial operations. Factors that can impact the risk include the number and type of machines, controls used, source configuration, building dimensions, terrain, and meteorological data.



## Recommendation

- Avoid siting new sensitive land uses within 300 feet of any dry cleaning operation. For operations with two or more machines provide 500 feet. For operations with 3 or more machines, consult with the local air district.
- Do not site new sensitive land uses in the same building with perc dry cleaning operations.

## References

- *Proposed Amended Rule 1421 – Control of Perchloroethylene Emissions from Dry Cleaning Systems*, Final Staff Report. South Coast AQMD. (October 2002)
- *Air Toxic Control Measure for Emissions of Perchloroethylene from Dry Cleaning Operations*. ARB (1994)  
(<http://www.arb.ca.gov/toxics/atcm/percatcm.htm>)
- “An Assessment of Tetrachloroethylene in Human Breast Milk”, Judith Schreiber, New York State Department of Health – Bureau of Toxic Substance Assessment, Journal of Exposure Analysis and Environmental Epidemiology, Vol.2, Suppl.2, pp. 15-26, 1992.
- *Draft Air Toxics “Hot Spots” Program Perchloroethylene Dry Cleaner Industry-wide Risk Assessment Guidelines*. (CAPCOA (November 2002)
- *Final Environmental Assessment for Proposed Amended Rule 1421 – Control of Perchloroethylene Emissions from Dry Cleaning Systems*. South Coast AQMD. (October 18, 2002)

## **Gasoline Dispensing Facilities**

Refueling at gasoline dispensing facilities releases benzene into the air. Benzene is a potent carcinogen and is one of the highest risk air pollutants regulated by ARB. Motor vehicles and motor vehicle-related activity account for over 90 percent of benzene emissions in California. While gasoline-dispensing facilities account for a small part of total benzene emissions, near source exposures for large facilities can be significant.

Since 1990, benzene in the air has been reduced by over 75 percent statewide, primarily due to the implementation of emissions controls on motor vehicle vapor recovery equipment at gas stations, and a reduction in benzene levels in gasoline. However, benzene levels are still significant. In urban areas, average benzene exposure is equivalent to about 50 in one million.

Gasoline dispensing facilities tend to be located in areas close to residential and shopping areas. Benzene emissions from the largest gas stations may result in near source health risk beyond the regional background and district health risk thresholds. The emergence of very high gasoline throughput at large retail or

wholesale outlets makes this a concern as these types of outlets are projected to account for an increasing market share in the next few years.

### Key Health Findings

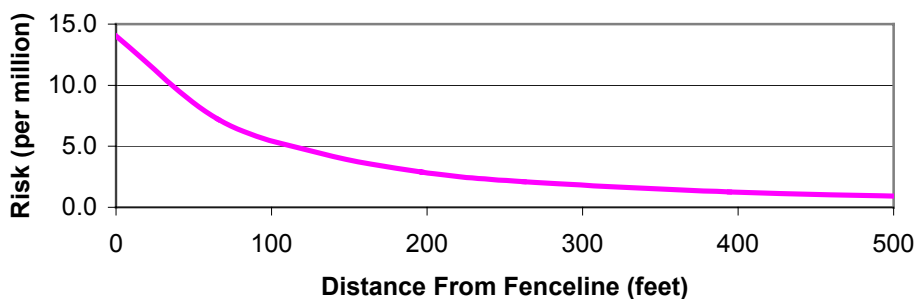
Benzene is a human carcinogen identified by ARB as a toxic air contaminant. Benzene also can cause non-cancer health effects above a certain level of exposure. Brief inhalation exposure to high concentrations can cause central nervous system depression. Acute effects include central nervous system symptoms of nausea, tremors, drowsiness, dizziness, headache, intoxication, and unconsciousness. It is unlikely that the public would be exposed to levels of benzene from gasoline dispensing facilities high enough to cause these non-cancer health effects.

### Distance Related Findings

A well-maintained vapor recovery system can decrease emissions of benzene by more than 90% compared with an uncontrolled facility. Almost all facilities have emission control systems. Air quality modeling of the health risks from gasoline dispensing facilities indicate that the impact from the facilities decreases rapidly as the distance from the facility increases.

Statistics reported in the ARB's staff reports on Enhanced Vapor Recovery released in 2000 and 2002, indicated that almost 96 percent of the gasoline dispensing facilities had a throughput less than 2.4 million gallons per year. The remaining four percent, or approximately 450 facilities, had throughputs exceeding 2.4 million gallons per year. For these stations, the average gasoline throughput was 3.6 million gallons per year.

**Figure 1-6  
Gasoline Dispensing Facility Health Risk  
for 3,600,000 gal/yr throughput**



As shown in Figure 1-6, the risk levels for a gasoline dispensing facility with a throughput of 3.6 million gallons per year is about 10 in one million at a distance of 50 feet from the fenceline. However, as the throughput increases, the potential risk increases.

As mentioned above, air pollution levels in the immediate vicinity of large gasoline dispensing facilities may be higher than the surrounding area (although tailpipe emissions from motor vehicles dominates the health impacts). Very large gasoline dispensing facilities located at large wholesale and discount centers may dispense nine million gallons of gasoline per year or more. At nine million gallons, the potential risk could be around 25 in one million at 50 feet, dropping to about five in one million at 300 feet. Some facilities have throughputs as high as 19 million gallons.

### Recommendation

- Avoid siting new sensitive land uses within 300 feet of a large gasoline dispensing facility (defined as a facility with a throughput of 3.6 million gallons per year or greater). A 50 foot separation is recommended for typical gas dispensing facilities.

### References

- *Gasoline Service Station Industry-wide Risk Assessment Guidelines*. California Air Pollution Control Officers Association (December 1997 and revised November 1, 2001)
- *Staff Report on Enhanced Vapor Recovery*. ARB (February 4, 2000)
- *The California Almanac of Emissions and Air Quality*. ARB (2004)
- *Staff Report on Enhanced Vapor Recovery Technology Review*. ARB (October 2002)

### **Other Facility Types that Emit Air Pollutants of Concern**

In addition to source specific recommendations, Table 1-3 includes a list of other industrial sources that could pose a significant health risk to nearby sensitive individuals depending on a number of factors. These factors include the amount of pollutant emitted and its toxicity, the distance to nearby individuals, and the type of emission controls in place. Since these types of facilities are subject to air permits from local air districts, facility specific information should be obtained where there are questions about siting a sensitive land use close to an industrial facility.

### **Potential Sources of Odor and Dust Complaints**

Odors and dust from commercial activities are the most common sources of air pollution complaints and concerns from the public. Land use planning and permitting processes should consider the potential impacts of odor and dust on surrounding land uses, and provide for adequate separation between odor and dust sources. As with other types of air pollution, a number of factors need to be considered when determining an adequate distance or mitigation to avoid odor or

**Table 1-3 – Examples of Other Facility Types That Emit<sup>1</sup> Air Pollutants of Concern**

<u>Categories</u>	<u>Facility Type</u>	<u>Air Pollutants of Concern</u>
Commercial	Autobody Shops Furniture Repair Film Processing Services Distribution Centers Printing Shops Diesel Engines	Metals, Solvents Solvents <sup>2</sup> , Methylene Chloride Solvents, Perchloroethylene Diesel Particulate Matter Solvents Diesel Particulate Matter
Industrial	Construction Manufacturers Metal Platers, Welders, Metal Spray (flame spray) Operations Chemical Producers Furniture Manufacturers Shipbuilding and Repair  Rock Quarries and Cement Manufacturers Hazardous Waste Incinerators Power Plants  Research and Development Facilities	Particulate Matter, Asbestos Solvents, Metals Hexavalent Chromium, Nickel, Metals Solvents, Metals Solvents Hexavalent chromium and other metals, Solvents Particulate Matter, Asbestos  Dioxin, Solvents, Metals Benzene, Formaldehyde, Particulate Matter Solvents, Metals, etc.
Public	Landfills  Waste Water Treatment Plants Medical Waste Incinerators  Recycling, Garbage Transfer Stations Municipal Incinerators	Benzene, Vinyl Chloride, Diesel Particulate Matter Hydrogen Sulfide Dioxin, Benzene, PAH, PCBs, 1,3-Butadiene Diesel Particulate Matter  Dioxin, Benzene, PAH, PCBs, 1,3-Butadiene
Transportation	Truck Stops	Diesel Particulate Matter
Agricultural Operations	Farming Operations  Livestock and Dairy Operations	Diesel Particulate Matter, VOCs, NOx, PM10, CO, SOx, Pesticides Ammonia, VOCs, PM10

<sup>1</sup>Not all facilities will emit pollutants of concern due to process changes or chemical substitution. Consult the local air district regarding specific facilities.

<sup>2</sup>Some solvents may emit toxic air pollutants, but not all solvents are toxic air contaminants.

dust complaints in a specific situation. Local air districts should be consulted for advice when these siting situations arise.

Table 1-4 lists some of the most common sources of odor complaints received by local air districts. Complaints about odors are the responsibility of local air districts and are covered under state law. The types of facilities that can cause odor complaints are varied and can range from small commercial facilities to large industrial facilities, and may include waste disposal and recycling operations. Odors can cause health symptoms such as nausea and headache. Facilities with odors may also be sources of toxic air pollutants (See Table 1-3). Some common sources of odors emitted by facilities are sulfur compounds, organic solvents, and the decomposition/digestion of biological materials. Because of the subjective nature of an individual's sensitivity to a particular type of odor, there is no specific rule for assigning appropriate separations from odor sources. Under the right meteorological conditions, some odors may still be offensive several miles from the source.



Sources of dust are also common sources of air pollution-related complaints. Operations that can result in dust problems are rock crushing, gravel production, stone quarrying, and mining operations. A common source of complaints is the dust and noise associated with blasting that may be part of these operations. Besides the health impacts of dust as particulate matter, thick dust also impairs visibility, aesthetic values, and can soil homes and automobiles. Local air districts typically have rules for regulating dust sources in their jurisdictions, but dust sources can still be a concern. Therefore, separation of these facilities from residential and other new sensitive land uses should be considered.

In some areas of California, asbestos occurs naturally in stone deposits. Asbestos is a potent carcinogenic substance when inhaled. Asbestos-containing dust may be a public health concern in areas where asbestos-containing rock is mined, crushed, processed, or used. Situations where asbestos-containing gravel has been used in road paving materials are also a source of asbestos exposure to the general public. Planners are advised to consult with local air pollution agencies in areas where asbestos-containing gravel or stone products are produced or used.

## 2. Handbook Development

ARB and local air districts share responsibility for improving statewide air quality. As a result of California's air pollution control programs, air quality has improved and health risk has been reduced statewide. However, state and federal air quality standards are still exceeded in many areas of California and the statewide health risk posed by toxic air contaminants (air toxics) remains too high. Also, some communities experience higher pollution exposures than others - making localized impacts, as well regional or statewide impacts, an important consideration. It is for this reason that this Handbook has been produced - to promote better, more informed decision-making by local land use agencies that will improve air quality and public health in their communities.

Land use policies and practices, including planning, zoning, and siting activities, can play a critical role in air quality and public health at the local level. For instance, even with the best available control technology, some projects that are sited very close to homes, schools, and other public places can result in elevated air pollution exposures. The reverse is also true – siting a new school or home too close to an existing source of air pollution can pose a public health risk. The ARB recommendations in section 1 address this issue.

*This Handbook is an informational document that we hope will strengthen the relationship between air quality and land use agencies. It highlights the need for land use agencies to address the potential for new projects to result in localized health risk or contribute to cumulative impacts where air pollution sources are concentrated.*

Avoiding these incompatible land uses is a key to reducing localized air pollution exposures that can result in adverse health impacts, especially to sensitive individuals.

Individual siting decisions that result in incompatible land uses are often the result of locating “sensitive” land uses next to polluting sources. These decisions can be of even greater concern when existing air pollution exposures in a community are considered. In general terms, this is often referred to as the issue of “cumulative impacts.” ARB is working with local air districts to better define these situations and to make information about existing air pollution levels (e.g., from local businesses, motor vehicles, and other areawide sources) more readily available to land use agencies.

In December 2001, the ARB adopted “Policies and Actions for Environmental Justice” (Policies). These Policies were developed in coordination with a group of stakeholders, representing local government agencies, community interest

groups, environmental justice organizations, academia, and business (Environmental Justice Stakeholders Group).

The Policies included a commitment to work with land use planners, transportation agencies, and local air districts to develop ways to identify, consider, and reduce cumulative air pollution emissions, exposure, and health risks associated with land use planning and decision-making. Developed under the auspices of the ARB's Environmental Justice Stakeholders Group, this Handbook is a first step in meeting that commitment.

ARB has produced this Handbook to help achieve several objectives:

- Provide recommendations on situations to avoid when siting new residences, schools, day care centers, playgrounds, and medical-related facilities (sensitive sites or sensitive land uses);
- Identify approaches that land use agencies can use to prevent or reduce potential air pollution impacts associated with general plan policies, new land use development, siting, and permitting decisions;
- Improve and facilitate access to air quality data and evaluation tools for use in the land use decision-making process;
- Encourage stronger collaboration between land use agencies and local air districts to reduce community exposure to source-specific and cumulative air pollution impacts; and
- Emphasize community outreach approaches that promote active public involvement in the air quality/land use decision-making process.

This Handbook builds upon California's 2003 General Plan Guidelines. These Guidelines, developed by the Governor's Office of Planning and Research (OPR), explain the land use planning process and applicable legal requirements. This Handbook also builds upon a 1997 ARB report, "The Land Use-Air Quality Linkage" ("Linkage Report").<sup>9</sup> The Linkage Report was an outgrowth of the California Clean Air Act which, among other things, called upon local air districts to focus particular attention on reducing emissions from sources that indirectly cause air pollution by attracting vehicle trips. Such indirect sources include, but are not limited to, shopping centers, schools and universities, employment centers, warehousing, airport hubs, medical offices, and sports arenas. The Linkage Report summarizes data as of 1997 on the relationships between land use, transportation, and air quality, and highlights strategies that can help to reduce the use of single occupancy automobile use. Such strategies

---

<sup>9</sup> To access this report, please refer to ARB's website or click on: <http://www.arb.ca.gov/ch/programs/link97.pdf>

complement ARB regulatory programs that continue to reduce motor vehicle emissions.

In this Handbook, we identify types of air quality-related information that we recommend land use agencies consider in the land use decision-making processes such as the development of regional, general, and community plans; zoning ordinances; environmental reviews; project siting; and permit issuance. The Handbook provides recommendations on the siting of new sensitive land uses based on current analyses. It also contains information on approaches and methodologies for evaluating new projects from an air pollution perspective.

The Handbook looks at air quality issues associated with emissions from industrial, commercial, and mobile sources of air pollution. Mobile sources continue to be the largest overall contributors to the state's air pollution problems, representing the greatest air pollution health risk to most Californians. Based on current health risk information for air toxics, the most serious pollutants on a statewide basis are diesel PM, benzene, and 1,3-butadiene, all of which are primarily emitted by motor vehicles. From a state perspective, ARB continues to pursue new strategies to further reduce motor vehicle-related emissions in order to meet air quality standards and reduce air toxics risk.

While mobile sources are the largest overall contributors to the state's air pollution problems, industrial and commercial sources can also pose a health risk, particularly to people near the source. For this reason, the issue of incompatible land uses is an important focus of this document.

### **Handbook Audience**

Even though the primary users of the Handbook will likely be agencies responsible for air quality and land use planning, we hope the ideas and technical issues presented in this Handbook will also be useful for:

- public and community organizations and community residents;
- federal, state and regional agencies that fund, review, regulate, oversee, or otherwise influence environmental policies and programs affected by land use policies; and
- private developers.



### 3. Key Community Focused Issues Land Use Agencies Should Consider

Two key air quality issues that land use agencies should consider in their planning, zoning, and permitting processes are:

- 1) **Incompatible Land Uses.** Localized air pollution impacts from incompatible land use can occur when polluting sources, such as a heavily trafficked roadway, warehousing facilities, or industrial or commercial facilities, are located near a land use where sensitive individuals are found such as a school, hospital, or homes.
- 2) **Cumulative Impacts.** Cumulative air pollution impacts can occur from a concentration of multiple sources that individually comply with air pollution control requirements or fall below risk thresholds, but in the aggregate may pose a public health risk to exposed individuals. These sources can be heavy or light-industrial operations, commercial facilities such as autobody shops, large gas dispensing facilities, dry cleaners, and chrome platers, and freeways or other nearby busy transportation corridors.

#### **Incompatible Land Uses**

Land use policies and practices can worsen air pollution exposure and adversely affect public health by mixing incompatible land uses. Examples include locating new sensitive land uses, such as housing or schools, next to small metal plating facilities that use a highly toxic form of chromium, or very near large industrial facilities or freeways. Based on recent monitoring and health-based studies, we now know that air quality impacts from incompatible land uses can contribute to increased risk of illness, missed work and school, a lower quality of life, and higher costs for public health and pollution control.<sup>10</sup>

Avoiding incompatible land uses can be a challenge in the context of mixed-use industrial and residential zoning. For a variety of reasons, government agencies and housing advocates have encouraged the proximity of affordable housing to employment centers, shopping areas, and transportation corridors, partially as a means to reduce vehicle trips and their associated emissions. Generally speaking, typical distances in mixed-use communities between businesses and industries and other land uses such as homes and schools, should be adequate to avoid health risks. However, generalizations do not always hold as we addressed in section 1 of this Handbook.

In terms of siting air pollution sources, the proposed location of a project is a major factor in determining whether it will result in localized air quality impacts. Often, the problem can be avoided by providing an adequate distance or setback

---

<sup>10</sup> For more information, the reader should refer to ARB's website on community health: <http://www.arb.ca.gov/ch/ch.htm>

between a source of emissions and nearby sensitive land uses. Sometimes, suggesting project design changes or mitigation measures in the project review phase can also reduce or avoid potential impacts. This underscores the importance of addressing potential incompatible land uses as early as possible in the project review process, ideally in the general plan itself.

### **Cumulative Air Pollution Impacts**

The broad concept of cumulative air pollution impacts reflects the combination of regional air pollution levels and any localized impacts. Many factors contribute to air pollution levels experienced in any location. These include urban background air pollution, historic land use patterns, the prevalence of freeways and other transportation corridors, the concentration of industrial and commercial businesses, and local meteorology and terrain.

When considering the potential air quality impacts of polluting sources on individuals, project location and the concentration of emissions from air pollution sources need to be considered in the land use decision-making process. In section 4, the Handbook offers a series of questions that helps land use agencies determine if a project should undergo a more careful analysis. This holds true regardless of whether the project being sited is a polluting source or a sensitive land use project.

Large industrial areas are not the only land uses that may result in public health concerns in mixed-use communities. Cumulative air pollution impacts can also occur if land uses do not adequately provide setbacks or otherwise protect sensitive individuals from potential air pollution impacts associated with nearby light industrial sources. This can occur with activities such as truck idling and traffic congestion, or from indirect sources such as warehousing facilities that are located in a community or neighborhood.

In October 2004, Cal/EPA published its Environmental Justice Action Plan. In February 2005, the Cal/EPA Interagency Working Group approved a working definition of “cumulative impacts” for purposes of initially guiding the pilot projects that are being conducted pursuant to that plan. Cal/EPA is now in the process of developing a Cumulative Impacts Assessment Guidance document. Cal/EPA will revisit the working definition of “cumulative impacts” as the Agency develops that guidance. The following is the working definition:

*“Cumulative impacts means exposures, public health or environmental effects from the combined emissions and discharges, in a geographic area, including environmental pollution from all sources, whether single or multi-media, routinely, accidentally, or otherwise released. Impacts will take into account sensitive populations and socio-economic factors, where applicable, and to the extent data are available.”*

#### **4. Mechanisms for Integrating Localized Air Quality Concerns Into Land Use Processes**

Land use agencies should use each of their existing planning, zoning, and permitting authorities to address the potential health risk associated with new projects. Land use-specific mechanisms can go a long way toward addressing both localized and cumulative impacts from new air pollution sources that are not otherwise addressed by environmental regulations. Likewise, close collaboration and communication between land use agencies and local air districts in both the planning and project approval stages can further reduce these impacts. Local agency partnerships can also result in early identification of potential impacts from proposed activities that might otherwise escape environmental review. When this happens, pollution problems can be prevented or reduced before projects are approved, when it is less complex and expensive to mitigate.

The land use entitlement process requires a series of planning decisions. At the highest level, the General Plan sets the policies and direction for the jurisdiction, and includes a number of mandatory elements dealing with issues such as housing, circulation, and health hazards. Zoning is the primary tool for implementing land use policies. Specific or community plans created in conjunction with a specific project also perform many of the same functions as a zoning ordinance. Zoning can be modified by means of variances and conditional use permits. The latter are frequently used to insure compatibility between otherwise conflicting land uses. Finally, new development usually requires the approval of a parcel or tract map before grading and building permits can be issued. These parcel or tract maps must be consistent with the applicable General Plan, zoning and other standards.

Land use agencies can use their planning authority to separate industrial and residential land uses, or to require mitigation where separation is not feasible. By separating incompatible land uses, land use agencies can prevent or reduce both localized and cumulative air pollution impacts without denying what might otherwise be a desirable project.<sup>11</sup> For instance:

- a dry cleaner could open a storefront operation in a community with actual cleaning operations performed at a remote location away from residential areas;
- gas dispensing facilities with lower fuel throughput could be sited in mixed-use areas;
- enhanced building ventilation or filtering systems in schools or senior care centers can reduce ambient air from nearby busy arterials; or
- landscaping and regular watering can be used to reduce fugitive dust at a building construction site near a school yard.

---

<sup>11</sup> It should be noted that such actions should also be considered as part of the General Plan or Plan element process.

The following general and specific land use approaches can help to reduce potential adverse air pollution impacts that projects may have on public health.

### **General Plans**

The primary purpose of planning, and the source of government authority to engage in planning, is to protect public health, safety, and welfare. In its most basic sense, a local government General Plan expresses the community's development goals and embodies public policy relative to the distribution of future land uses, forming the basis for most land use decisions. Therefore, the most effective mechanism for dealing with the central land use concept of compatibility and its relationship to cumulative air pollution impacts is the General Plan. Well before projects are proposed within a jurisdiction, the General Plan sets the stage for where projects can be sited, and their compatibility with comprehensive community goals, objectives, and policies.

In 2003, OPR revised its General Plan Guidelines, highlighting the importance of incorporating sustainable development and environmental justice policies in the planning process. The OPR General Plan Guidelines provides an effective and long-term approach to reduce cumulative air pollution impacts at the earliest planning stages. In light of these important additions to the Guidelines, land use agencies should consider updating their General Plans or Plan elements to address these revisions.

The General Plan and related Plan elements can be used to avoid incompatible land uses by incorporating air quality considerations into these documents. For instance, a General Plan safety element with an air quality component could be used to incorporate policies or objectives that are intended to protect the public from the potential for facility breakdowns that may result in a dangerous release of air toxics. Likewise, an air quality component to the transportation circulation element of the General Plan could include policies or standards to prevent or reduce local exposure to diesel exhaust from trucks and other vehicles. For instance, the transportation circulation element could encourage the construction of alternative routes away from residential areas for heavy-duty diesel trucks. By considering the relationship between air quality and transportation, the circulation element could also include air quality policies to prevent or reduce trips and travel, and thus vehicle emissions. Policies in the land use element of the General Plan could identify areas appropriate for future industrial, commercial, and residential uses. Such policies could also introduce design and distance parameters that reduce emissions, exposure, and risk from industrial and some commercial land uses (e.g., dry cleaners) that are in close proximity to residential areas or schools.

Land use agencies should also consider updating or creating an air quality element in the jurisdiction's General Plan. In the air quality element, local decision-makers could develop long-term, effective plans and policies to address

air quality issues, including cumulative impacts. The air quality element can also provide a general reference guide that informs local land use planners about regional and community level air quality, regulatory air pollution control requirements and guidelines, and references emissions and pollution source data bases and assessment and modeling tools. As is further described in Appendix C of the Handbook, new assessment tools that ARB is developing can be included into the air quality element by reference. For instance, ARB's statewide risk maps could be referenced in the air quality element as a resource that could be consulted by developers or land use agencies

## **Zoning**

The purpose of "zoning" is to separate different land uses. Zoning ordinances establish development controls to ensure that private development takes place within a given area in a manner in which:

- All uses are compatible (e.g., an industrial plant is not permitted in a residential area);
- Common development standards are used (e.g., all homes in a given area are set back the same minimum distance from the street); and,
- Each development does not unreasonably impose a burden upon its neighbors (e.g., parking is required on site so as not to create neighborhood parking problems).

To do this, use districts called "zones" are established and standards are developed for these zones. The four basic zones are residential, commercial, industrial and institutional.

Land use agencies may wish to consider how zoning ordinances, particularly those for mixed-use areas, can be used to avoid exacerbating poor land use practices of the past or contributing to localized and cumulative air pollution impacts in the community.

Sometimes, especially in mixed-use zones, there is a potential for certain categories of existing businesses or industrial operations to result in cumulative air pollution impacts to new development projects. For example:

- An assisted living project is proposed for a mixed-use zone adjacent to an existing chrome plating facility, or several dry cleaners;
- Multiple industrial sources regulated by a local air district are located directly upwind of a new apartment complex;
- A new housing development is sited in a mixed-use zone that is downwind or adjacent to a distribution center that attracts diesel-fueled delivery trucks and TRUs; or
- A new housing development or sensitive land use is sited without adequate setbacks from an existing major transportation corridor or rail yard.

As part of the public process for making zoning changes, local land use agencies could work with community planning groups, local businesses, and community residents to determine how best to address existing incompatible land uses.

### **Land Use Permitting Processes**

#### **■ Questions to Consider When Reviewing New Projects**

Very often, just knowing what questions to ask can yield critical information about the potential air pollution impacts of proposed projects – both from the perspective of a specific project as well as in the nature of existing air pollution sources in the same impact area. Available land use information can reveal the proximity of air pollution sources to sensitive individuals, the potential for incompatible land uses, and the location and nature of nearby air pollution sources. Air quality data, available from the ARB and local air districts, can provide information about the types and amounts of air pollution emitted in an area, regional air quality concentrations, and health risk estimates for specific sources.

General Plans and zoning maps are an excellent starting point in reviewing project proposals for their potential air pollution impacts. These documents contain information about existing or proposed land uses for a specific location as well as the surrounding area. Often, just looking at a map of the proposed location for a facility and its surrounding area will help to identify a potential adjacent incompatible land use.

The following pages are a “pull-out” list of questions to consider along with cross-references to pertinent information in the Handbook. These questions are intended to assist land use agencies in evaluating potential air quality-related concerns associated with new project proposals.

The first group of questions contains project-related queries designed to help identify the potential for localized project impacts, particularly associated with incompatible land uses. The second group of questions focuses on the issue of potential cumulative impacts by including questions about existing emissions and air quality in the community, and community feedback. Depending on the answers to these questions, a land use agency may decide a more detailed review of the proposal is warranted.

The California Department of Education has already developed a detailed process for school siting which is outlined in Appendix E. However, school districts may also find this section helpful when evaluating the most appropriate site for new schools in their area. At a minimum, using these questions may encourage school districts to engage throughout their siting process with land use agencies and local air districts. The combined expertise of these entities can be useful in devising relevant design standards and mitigation measures that can

reduce exposure to cumulative emissions, exposure, and health risk to students and school workers.

As indicated throughout the Handbook, we strongly encourage land use agencies to consult early and often with local air districts. Local air districts have the expertise, many of the analytical tools, and a working knowledge of the sources they regulate. It is also critical to fully involve the public and businesses that could be affected by the siting decision. The questions provided in the chart below do not imply any particular action should be taken by land use agencies. Rather the questions are intended to improve the assessment process and facilitate informed decision-making.

■ **Project-Related Questions**

This section includes project-related questions that, in conjunction with the questions in the next section, can be used to tailor the project evaluation. These questions are designed to help identify the potential for incompatible land uses from localized project impacts.

**Questions to Consider When Reviewing New Projects**

Project-Related Questions	Cross-Reference to Relevant Handbook Sections
<p>1. Is the proposed project:</p> <ul style="list-style-type: none"> <li>▲ A business or commercial license renewal</li> <li>▲ A new or modified commercial project</li> <li>▲ A new or modified industrial project</li> <li>▲ A new or modified public facility project</li> <li>▲ A new or modified transportation project</li> <li>▲ A housing or other development in which sensitive individuals may live or play</li> </ul>	<p>See Appendix A for typical land use classifications and associated project categories that could emit air pollutants.</p>
<p>2. Does the proposed project:</p> <ul style="list-style-type: none"> <li>▲ Conform to the zoning designation?</li> <li>▲ Require a variance to the zoning designation?</li> <li>▲ Include plans to expand operations over the life of the business such that additional emissions may increase the pollution burden in the community (e.g., from additional truck operations, new industrial operations or process lines, increased hours of operation, build-out to the property line, etc.)?</li> </ul>	<p>See Appendix F for a general explanation of land use processes.</p> <p>In addition, Section 3 contains a discussion of how land use planning, zoning, and permitting practices can result in incompatible land uses or cumulative air pollution impacts.</p>
<p>3. Has the local air district provided comments or information to assist in the analysis?</p>	<p>See Section 5 and Appendix C for a description of air quality-related tools that the ARB and local air districts use to provide information on potential air pollution impacts.</p>
<p>4. Have public meetings been scheduled with the affected community to solicit their involvement in the decision-making process for the proposed project?</p>	<p>See Section 7 for a discussion of public participation, information and outreach tools.</p>
<p>5. If the proposed project will be subject to local air district regulations:</p> <ul style="list-style-type: none"> <li>▲ Has the project received a permit from the local air district?</li> <li>▲ Would it comply with applicable local air district requirements?</li> <li>▲ Is the local air district contemplating new regulations that would reduce emissions from the source over time?</li> <li>▲ Will potential emissions from the project</li> </ul>	<p>See Appendix C for a description of local air district programs.</p>



Project-Related Questions	Cross-Reference to Relevant Handbook Sections
<p>trigger the local air district's new source review for criteria pollutants or air toxics emissions?</p> <ul style="list-style-type: none"> <li>▲ Is the local air district expected to ask the proposed project to perform a risk assessment?</li> <li>▲ Is there sufficient new information or public concern to call for a more thorough environmental analysis of the proposed project?</li> <li>▲ Are there plans to expand operations over time?</li> <li>▲ Are there land-use based air quality significance thresholds or design standards that could be applied to this project in addition to applicable air district requirements?</li> </ul>	
<p>6. If the proposed project will release air pollution emissions, either directly or indirectly, but is not regulated by the local air district:</p> <ul style="list-style-type: none"> <li>▲ Is the local air district informed of the project?</li> <li>▲ Does the local air district believe that there could be potential air pollution impacts associated with this project category because of the proximity of the project to sensitive individuals?</li> <li>▲ If the project is one in which individuals live or play (e.g., a home, playground, convalescent home, etc.), does the local air district believe that the project's proximity to nearby sources could pose potential air pollution impacts?</li> <li>▲ Are there indirect emissions that could be associated with the project (e.g., truck traffic or idling, transport refrigeration unit operations, stationary diesel engine operations, etc.) that will be in close proximity to sensitive individuals?</li> <li>▲ Will the proposed project increase or serve as a magnet for diesel traffic?</li> <li>▲ Are there land-use based air quality significance thresholds or design standards that could be applied to this project in addition to applicable air district requirements?</li> <li>▲ Is there sufficient new information or public concern to call for a more thorough environmental analysis of the proposed project?</li> <li>▲ Should the site approval process include identification and mitigation of potential</li> </ul>	<p>See Section 1 for recommendations on situations to avoid when siting projects where sensitive individuals would be located (sensitive sites).</p>

Project-Related Questions	Cross-Reference to Relevant Handbook Sections
<p>direct or indirect emissions associated with the potential project?</p>	
<p>7. Does the local air district or land use agency have pertinent information on the source, such as:</p> <ul style="list-style-type: none"> <li>▲ Available permit and enforcement data, including for the owner or operator of the proposed source that may have other sources in the State.</li> <li>▲ Proximity of the proposed project to sensitive individuals.</li> <li>▲ Number of potentially exposed individuals from the proposed project.</li> <li>▲ Potential for the proposed project to expose sensitive individuals to odor or other air pollution nuisances.</li> <li>▲ Meteorology or the prevailing wind patterns between the proposed project and the nearest receptor, or between the proposed sensitive receptor project and sources that could pose a localized or cumulative air pollution impact.</li> </ul>	<p>See Appendix C for a description of local air district programs.</p> <p>See Appendix B for a listing of useful information that land use agencies should have on hand or have accessible when reviewing proposed projects for potential air pollution impacts.</p> <p>Also, do not hesitate to contact your local air district regarding answers to any of these questions that might not be available at the land use agency.</p> <p>See Section 1 for recommendations on situations to avoid when siting projects where sensitive individuals would be located (sensitive sites).</p>
<p>8. Based upon the project application, its location, and the nature of the source, could the proposed project:</p> <ul style="list-style-type: none"> <li>▲ Be a polluting source that is located in proximity to, or otherwise upwind, of a location where sensitive individuals live or play?</li> <li>▲ Attract sensitive individuals and be located in proximity to or otherwise downwind, of a source or multiple sources of pollution, including polluting facilities or transportation-related sources that contribute emissions either directly or indirectly?</li> <li>▲ Result in health risk to the surrounding community?</li> </ul>	<p>See Section 3 for a discussion of what is an incompatible land use and the potential cumulative air pollution impacts.</p> <p>See Section 1 for recommendations on situations to avoid when siting projects where sensitive individuals would be located (sensitive sites).</p>
<p>9. If a CEQA categorical exemption is proposed, were the following questions considered:</p> <ul style="list-style-type: none"> <li>▲ Is the project site environmentally sensitive as defined by the project's location? (A project that is ordinarily insignificant in its impact on the environment may in a particularly sensitive environment be significant.)</li> <li>▲ Would the project and successive future projects of the same type in the approximate location potentially result in cumulative impacts?</li> <li>▲ Are there "unusual circumstances" creating the possibility of significant effects?</li> </ul>	<p>See CEQA Guidelines section 15300, and Public Resources Code, section 21084.</p> <p>See Section 1 for recommendations on situations to avoid when siting projects where sensitive individuals would be located (sensitive sites).</p> <p>See also Section 5 and Appendix C for a description of air quality-related tools that the ARB and local air districts use to provide information on potential air pollution impacts.</p>

■ **Questions Related to Cumulative Impact Assessment**

The following questions can be used to provide the decision-maker with a better understanding of the potential for cumulative air pollution impacts to an affected community. Answers to these questions will help to determine if new projects or activities warrant a more detailed review. It may also help to see potential environmental concerns from the perspective of the affected community. Additionally, responses can provide local decision-makers with information with which to assess the best policy options for addressing neighborhood-scale air pollution concerns.

The questions below can be used to identify whether existing tools and procedures are adequate to address land use-related air pollution issues. This process can also be used to pinpoint project characteristics that may have the greatest impact on community-level emissions, exposure, and risk. Such elements can include: the compliance record of existing sources including those owned or operated by the project proponent; the concentration of emissions from polluting sources within the approximate area of sensitive sites; transportation circulation in proximity to the proposed project; compatibility with the General Plan and General Plan elements; etc.

The local air district can provide useful assistance in the collection and evaluation of air quality-related information for some of the questions and should be consulted early in the process.

**Questions Related to Cumulative Impact Assessment**

Technical Questions	Cross-Reference to Relevant Handbook Sections
1. Is the community home to industrial facilities?	See Appendix A for typical land use classifications and associated project categories that could emit air pollutants.
2. Do one or more major freeways or high-traffic volume surface streets cut through the community?	See transportation circulation element of your general plan. See also Appendix B for useful information that land use agencies should have on hand or have accessible when reviewing proposed projects for potential air pollution impacts.  See Section 1 for recommendations on situations to avoid when siting projects where sensitive individuals would be located (sensitive sites).
3. Is the area classified for mixed-use zoning?	See your general plan and zoning ordinances.
4. Is there an available list of air pollution sources in the community?	Contact your local air district.
5. Has a walk-through of the community been conducted to gather the following information:	See Appendix B for a listing of useful information that land use agencies

Technical Questions	Cross-Reference to Relevant Handbook Sections
<ul style="list-style-type: none"> <li>▲ Corroborate available information on land use activities in the area (e.g., businesses, housing developments, sensitive individuals, etc.)?</li> <li>▲ Determine the proximity of existing and anticipated future projects to residential areas or sensitive individuals?</li> <li>▲ Determine the concentration of emission sources (including anticipated future projects) to residential areas or sensitive individuals?</li> </ul>	<p>should have on hand or have accessible when reviewing proposed projects for potential air pollution impacts. Also contact your local air district.</p>
<p>6. Has the local air district been contacted to obtain information on sources in the community?</p>	<p>See Section 7 for a discussion of public participation, information and outreach tools.</p>
<p>7. What categories of commercial establishments are currently located in the area and does the local air district have these sources on file as being regulated or permitted?</p>	<p>See Appendix A for typical land use classifications and associated project categories that could emit air pollutants. Also contact your local air district.</p>
<p>8. What categories of indirect sources such as distribution centers or warehouses are currently located in the area?</p>	<p>See Appendix A for typical land use classifications and associated project categories that emit air pollutants.</p>
<p>9. What air quality monitoring data are available?</p>	<p>Contact your local air district.</p>
<p>10. Have any risk assessments been performed on emission sources in the area?</p>	<p>Contact your local air district.</p>
<p>11. Does the land use agency have the capability of applying a GIS spatial mapping tool that can overlay zoning, sub-development information, and other neighborhood characteristics, with air pollution and transportation data?</p>	<p>See Appendix B for a listing of useful information that land use agencies should have on hand or have accessible when reviewing proposed projects for potential air pollution impacts. Also contact your local air district for tools that can be used to supplement available land use agency tools.</p>
<p>12. Based on available information, is it possible to determine if the affected community or neighborhood experiences elevated health risk due to a concentration of air pollution sources in close proximity, and if not, can the necessary information be obtained?</p>	<p>Contact your local air district. Also see Section 1 for recommendations on situations to avoid when siting projects where sensitive individuals would be located (sensitive sites).</p>
<p>13. Does the community have a history of chronic complaints about air quality?</p>	<p>See Section 7 for a discussion of public participation, information and outreach tools. Also contact your local air district.</p>
<p>14. Is the affected community included in the public participation process for the agency's decision?</p>	<p>See Section 7 for a discussion of public participation, information and outreach tools.</p>
<p>15. Have community leaders or groups been contacted about any pre-existing or chronic community air quality concerns?</p>	<p>See Section 7 for a discussion of public participation, information and outreach tools. Also contact your local air district.</p>

## ■ **Mitigation Approaches**

In addition to considering the suitability of the project location, opportunities for mitigation of air pollution impacts should be considered. Sometimes, a land use agency may find that selection of a different project location to avoid a health risk is not feasible. When that happens, land use agencies should consider design improvements or other strategies that would reduce the risk. Such strategies could include performance or design standards, consultation with local air districts and other agencies on appropriate actions that these agencies should, or plan to, undertake, and consultation and outreach in the affected community. Potential mitigation measures should be feasible, cost-effective solutions within the available resources and authority of implementing agencies to enforce.<sup>12</sup>

## ■ **Conditional Use Permits and Performance Standards**

Some types of land uses are only allowed upon approval of a conditional use permit (also called a CUP or special use permit). A conditional use permit does not re-zone the land but specifies conditions under which a particular land use will be permitted. Such land uses could be those with potentially significant environmental impacts. Local zoning ordinances specify the uses for which a conditional use permit is required, the zones they may be allowed in, and public hearing procedures. The conditional use permit imposes special requirements to ensure that the use will not be detrimental to its surroundings.

In the context of land use planning, performance standards are requirements imposed on projects or project categories through conditional use permits to ensure compliance with general plan policies and local ordinances. These standards could apply to such project categories as distribution centers, very large gas dispensing facilities, autobody shops, dry cleaners, and metal platers. Land use agencies may wish to consider adding land use-based performance standards to zoning ordinances in existing mixed-use communities for certain air pollution project categories. Such standards would provide certainty and equitable treatment to all projects of a similar nature, and reserve the more resource intensive conditional or special use permits to projects that require a more detailed analysis. In developing project design or performance standards, land use agencies should consult with the local air district. Early and regular consultation can avoid duplication or inconsistency with local air district control requirements when considering the site-specific design and operation of a project.

---

<sup>12</sup> A land use agency has the authority to condition or deny a project based upon information collected and evaluated through the land use decision-making process. However, any denial would need to be based upon identifiable, generally applicable, articulated standards set forth in the local government's General Plan and zoning codes. One way of averting this is to conduct early and regular outreach to the community and the local air district so that community and environmental concerns can be addressed and accommodated into the project proposal.

Examples of land use-based air quality-specific performance standards include the following:

- Placing a process vent away from the direction of the local playground that is nearby or increasing the stack height so that emissions are dispersed to reduce the emissions impact on surrounding homes or schools.
- Setbacks between the project fence line and the population center.
- Limiting the hours of operation of a facility to avoid excess emissions exposure or foul odors to nearby individuals.
- An ordinance that requires fleet operators to use cleaner vehicles before project approval (if a new business), or when expanding the fleet (if an existing business); and
- Providing alternate routes for truck operations that discourage detours into residential neighborhoods.

### **Outreach to Other Agencies**

When questions arise regarding the air quality impacts of projects, including potential cumulative impacts, land use agencies should consult the local air district. Land use agencies should also consider the following suggestions to avoid creating new incompatible land uses:

- Consult with the local air district to help determine if emissions from a particular project will adversely impact sensitive individuals in the area, if existing or future effective regulations or permit requirements will affect the proposed project or other sources in the vicinity of the proposed project, or if additional inspections should be required.
  - Check with ARB for new information and modeling tools that can help evaluate projects seeking to site within your jurisdiction.
  - Become familiar with ARB's Land Use-Air Quality Linkage Report to determine whether approaches and evaluation tools contained in the Report can be used to reduce transportation-related impacts on communities.
  - Contact and collaborate with other state agencies that play a role in the land use decision-making process, e.g., the State Department of Education, the California Energy Commission, and Caltrans. These agencies have information on mitigation measures and mapping tools that could be useful in addressing local problems.
- **Information Clearinghouse**
- Land use agencies can refer to the ARB statewide electronic information clearinghouse for information on what measures other jurisdictions are using to address comparable issues or sources.<sup>13</sup>

---

<sup>13</sup> This information can be accessed from ARB's website by going to:  
<http://www.arb.ca.gov/ch/clearinghouse.htm>

The next section addresses available air quality assessment tools that land use agencies can use to evaluate the potential for localized or cumulative impacts in their communities.

## 5. Available Tools to Evaluate Cumulative Air Pollution Emissions and Risk

Until recently, California has traditionally approached air pollution control from the perspective of assessing whether the pollution was regional, category-specific, or from new or existing sources. This methodology has been generally effective in reducing statewide and regional air pollution impacts and risk levels. However, such an incremental, category-by-category, source-by-source approach may not always address community health impacts from multiple sources - including mobile, industrial, and commercial facilities.

As a result of air toxics and children's health concerns over the past several years, ARB and local air districts have begun to develop new tools to evaluate and inform the public about cumulative air pollution impacts at the community level. One aspect of ARB's programs now underway is to consolidate and make accessible air toxics emissions and monitoring data by region, using modeling tools and other analytical techniques to take a preliminary look at emissions, exposure, and health risk in communities.

ARB has developed multiple tools to assist local air districts perform assessments of cumulative emissions, exposure, and risk on a neighborhood scale. These tools include:

- Regional risk maps that show trends in potential cancer risk from toxic air pollutants in southern and central California between 1990 and 2010. These maps are based on the U.S. EPA's ASPEN model. These maps provide an estimate of background levels of toxic air pollutant risk but are not detailed enough to assess individual neighborhoods or facilities.<sup>14</sup>
- The Community Health Air Pollution Information System (CHAPIS) is a user-friendly, Internet-based system for displaying information on emissions from sources of air pollution in an easy to use mapping format. CHAPIS contains information on air pollution emissions from selected large facilities and small businesses that emit criteria and toxic air pollutants. It also contains information on air pollution emissions from motor vehicles. When released in 2004, CHAPIS did not contain information on every source of air pollution or every air pollutant. However, ARB continues to work with local air districts to include all of the largest air pollution sources and those with the highest documented air pollution risk. Additional facilities will be added to CHAPIS as more data become available.<sup>15</sup>

---

<sup>14</sup> For further information on these maps, please visit ARB's website at:

<http://www.arb.ca.gov/toxics/cti/hlthrisk/hlthrisk.htm>

<sup>15</sup> For further information on CHAPIS, please click on:

<http://www.arb.ca.gov/ch/chapis1/chapis1.htm>



- The Hot Spots Analysis and Reporting Program (HARP) is a software database package that evaluates emissions from one or more facilities to determine the overall health risk posed by the facility(-ies) on the surrounding community. Proper use of HARP ensures that the risk assessment meets the latest risk assessment guidelines published by the State Office of Environmental Health Hazard Assessment (OEHHA). HARP is designed with air quality professionals in mind and is available from the ARB.
- The Urban Emissions Model (URBEMIS) is a computer program that can be used to estimate emissions associated with land development projects in California such as residential neighborhoods, shopping centers, office buildings, and construction projects. URBEMIS uses emission factors available from the ARB to estimate vehicle emissions associated with new land uses.

Local air districts, and others can use these tools to assess a new project, or plan revision. For example, these tools can be used to:

- Identify if there are multiple sources of air pollution in the community;
- Identify the major sources of air pollution in the area under consideration;
- Identify the background potential cancer risk from toxic air pollution in the area under consideration;
- Estimate the risk from a new facility and how it adds to the overall risk from other nearby facilities; and
- Provide information to decision-makers and key stakeholders on whether there may be significant issues related to cumulative emissions, exposure, and health risk due to a permitting or land use decision.

If an air agency wishes to perform a cumulative air pollution impact analysis using any of these tools, it should consult with the ARB and/or the local air district to obtain information or assistance on the data inputs and procedures necessary to operate the program. In addition, land use agencies could consult with local air districts to determine the availability of land use and air pollution data for entry into an electronic Geographical Information System (GIS) format. GIS is an easier mapping tool than the more sophisticated models described in Appendix C. GIS mapping makes it possible to superimpose land use with air pollution information so that the spatial relationship between air pollution sources, sensitive receptors, and air quality can be visually represented. Appendix C provides a general description of the impact assessment process and micro-scale, or community level modeling tools that are available to evaluate potential cumulative air pollution impacts. Modeling protocols will be accessible on ARB's website as they become available. The ARB will also provide land use agencies and local air districts with statewide regional modeling results and information regarding micro-scale modeling.

## 6. ARB Programs to Reduce Air Pollution in Communities

ARB's regulatory programs reduce air pollutant emissions through statewide strategies that improve public health in all California communities. ARB's overall program addresses motor vehicles, consumer products, air toxics, air-quality planning, research, education, enforcement, and air monitoring. Community health and environmental justice concerns are a consideration in all these programs. ARB's programs are statewide but recognize that extra efforts may be needed in some communities due to historical mixed land-use patterns, limited participation in public processes in the past, and a greater concentration of air pollution sources in some communities.

ARB's strategies are intended to result in better air quality and reduced health risk to residents throughout California. The ARB's priority is to prevent or reduce the public's exposure to air pollution, including from toxic air contaminants that pose the greatest risk, particularly to infants and children who are more vulnerable to air pollution.

In October 2003, ARB updated its statewide control strategy to reduce emissions from source categories within its regulatory authority. A primary focus of the strategy is to achieve federal and state air quality standards for ozone and particulate matter throughout California, and to reduce health risk from diesel PM. Along with local air districts, ARB will continue to address air toxics emissions from regulated sources (see Table 6-1 for a summary of ARB activities). As indicated earlier, ARB will also provide analytical tools and information to land use agencies and local air districts to help assess and mitigate cumulative air pollution impacts.

The ARB will continue to consider the adoption of or revisions to needed air toxics control measures as part of the state's ongoing air toxics assessment program.<sup>16</sup>

As part of its effort to reduce particulate matter and air toxics emissions from diesel PM, the ARB has developed a Diesel Risk Reduction Program<sup>17</sup> that lays out several strategies in a three-pronged approach to reduce emissions and their associated risk:

- Stringent emission standards for all new diesel-fueled engines;
- Aggressive reductions from in-use engines; and
- Low sulfur fuel that will reduce PM and still provide the quality of diesel fuel needed to control diesel PM.

---

<sup>16</sup> For continuing information and updates on state measures, the reader can refer to ARB's website at <http://www.arb.ca.gov/toxics/toxics.htm>.

<sup>17</sup> For a comprehensive description of the program, please refer to ARB's website at <http://www.arb.ca.gov/diesel/dieselrrp.htm>.

**Table 6-1  
ARB ACTIONS TO ADDRESS  
CUMULATIVE AIR POLLUTION IMPACTS IN COMMUNITIES**

**Information Collection**

- Improve emission inventories, air monitoring data, and analysis tools that can help to identify areas with high cumulative air pollution impacts
- Conduct studies in coordination with OEHHA on the potential for cancer and non-cancer health effects from air pollutants emitted by specific source categories
- Establish web-based clearinghouse for local land use strategies

**Emission Reduction Approaches (2004-2006)\***

- Through a public process, consider development and/or amendment of regulations and related guidance to reduce emissions, exposure, and health risk at a statewide and local level for the following sources:
  - Diesel PM sources such as stationary diesel engines, transport refrigeration units, portable diesel engines, on-road public fleets, off-road public fleets, heavy-duty diesel truck idling, harbor craft vessels, waste haulers
  - Other air toxics sources, such as formaldehyde in composite wood products, hexavalent chromium for chrome plating and chromic acid anodizing, thermal spraying, and perchloroethylene dry cleaning
- Develop technical information for the following:\*
  - Distribution centers
  - Modeling tools such as HARP and CHAPIS
- Adopt rules and pollution prevention initiatives within legal authority to reduce emissions from mobile sources and fuels, and consumer products
- Develop and maintain Air Quality Handbook as a tool for use by land use agencies and local air districts to address cumulative air pollution impacts

**Other Approaches**

- Establish guidelines for use of statewide incentive funding for high priority mobile source emission reduction projects

\*Because ARB will continue to review the need to adopt or revise statewide measures, the information contained in this chart will be updated on an ongoing basis.

A number of ARB's diesel risk reduction strategies have been adopted. These include measures to reduce emissions from refuse haulers, urban buses, transport refrigeration units, stationary and portable diesel engines, and idling trucks and school buses. These sources are all important from a community perspective.<sup>18</sup>

---

<sup>18</sup> The reader can refer to ARB's website for information on its mobile source-related programs at: <http://www.arb.ca.gov/msprog/msprog.htm>, as well as regulations adopted and under consideration as part of the Diesel Risk Reduction Program at: <http://www.arb.ca.gov/diesel/dieselrrp.htm>

The ARB will continue to evaluate the health effects of air pollutants while implementing programs with local air districts to reduce air pollution in all California communities.

Local air districts also have ambitious programs to reduce criteria pollutants and air toxics from regulated sources in their region. Many of these programs also benefit air quality in local communities as well as in the broader region. For more information on what is being done in your area to reduce cumulative air pollution impacts through air pollution control programs, you should contact your local air district.<sup>19</sup>

---

<sup>19</sup> Local air district contacts can be found on the inside cover to this Handbook.

## **7. Ways to Enhance Meaningful Public Participation**

Community involvement is an important part of the land use process. The public is entitled to the best possible information about the air they breathe and what is being done to prevent or reduce unhealthy air pollution in their communities. In particular, information on how land use decisions can affect air pollution and public health should be made accessible to all communities, including low-income and minority communities.

Effective community participation consistently relies on a two-way flow of information – from public agencies to community members about opportunities, constraints, and impacts, and from community members back to public officials about needs, priorities, and preferences. The outreach process needed to build understanding and local neighborhood involvement requires data, methodologies, and formats tailored to the needs of the specific community. More importantly, it requires the strong collaboration of local government agencies that review and approve projects and land uses to improve the physical and environmental surroundings of the local community.

Many land use agencies, especially those in major metropolitan areas, are familiar with, and have a long-established public review process. Nevertheless, public outreach can often be improved. Active public involvement requires engaging the public in ways that do not require their previous interest in or knowledge of the land use or air pollution control requirements, and a commitment to taking action where appropriate to address the concerns that are raised.

### **■ Direct Community Outreach**

In conjunction with local air districts, land use agencies should consider designing an outreach program for community groups, other stakeholders, and local government agency staffs that address the problem of cumulative air pollution impacts, and the public and government role in reducing them. Such a program could consider analytical tools that assist in the preparation and presentation of information in a way that supports sensible decision-making and public involvement. Table 7-1 contains some general outreach approaches that might be considered.

**Table 7-1  
Public Participation Approaches**

- Staff and community leadership awareness training on environmental justice programs and community-based issues
- Surveys to identify the website information needs of interested community-based organizations and other stakeholders
- Information materials on local land use and air district authorities
- Community-based councils to facilitate and invite resident participation in the planning process
- Neighborhood CEQA scoping sessions that allows for community input prior to technical analysis
- Public information materials on siting issues are under review including materials written for the affected community, and in different media that widens accessibility
- Public meetings
- Identify other opportunities to include community-based organizations in the process

To improve outreach, local land use agencies should consider the following activities:

- Hold meetings in communities affected by agency programs, policies, and projects at times and in places that encourage public participation, such as evenings and weekends at centrally located community meeting rooms, libraries, and schools.
- Assess the need for and provide translation services at public meetings.
- Hold community meetings to update residents on the results of any special air monitoring programs conducted in their neighborhood.
- Hold community meetings to discuss and evaluate the various options to address cumulative impacts in their community.
- In coordination with local air districts, make staff available to attend meetings of community organizations and neighborhood groups to listen to and, where appropriate, act upon community concerns.
- Establish a specific contact person for environmental justice issues.
- Increase student and community awareness of local government land use activities and policies through outreach opportunities.
- Make air quality and land use information available to communities in an easily understood and useful format, including fact sheets, mailings, brochures, public service announcements, and web pages, in English and other languages.
- On the local government web-site, dedicate a page or section to what the land use program is doing regarding environmental justice and cumulative environmental impacts, and, as applicable, activities conducted with local air districts such as neighborhood air monitoring studies, pollution prevention, air pollution sources in neighborhoods, and risk reduction.

- Allow, encourage, and promote community access to land use activities, including public meetings, General Plan or Community Plan updates, zoning changes, special studies, CEQA reviews, variances, etc.
  - Distribute information in multiple languages, as needed, on how to contact the land use agency or local air district to obtain information and assistance regarding environmental justice programs, including how to participate in public processes.
  - Create and distribute a simple, easy-to-read, and understandable public participation handbook, which may be based on the “Public Participation Guidebook” developed by ARB.
- **Other Opportunities for Meaningful Public Outreach**
- Community-Based Planning Committees

Neighborhood-based or community planning advisory councils could be established to invite and facilitate direct resident participation into the planning process. With the right training and technical assistance, such councils can provide valuable input and a forum for the review of proposed amendments to plans, zone changes, land use permits, and suggestions as to how best to prevent or reduce cumulative air pollution impacts in their community.

- Regional Partnerships

Consider creating regional coalitions of key growth-related organizations from both the private and public sectors, with corporations, communities, other jurisdictions, and government agencies. Such partnerships could facilitate agreement on common goals and win-win solutions tailored specifically for the region. With this kind of dialogue, shared vision, and collaboration, barriers can be overcome and locally acceptable sustainable solutions implemented. Over the long term, such strategies will help to bring about clean air in communities as well as regionally.

**LAND USE CLASSIFICATIONS AND ASSOCIATED FACILITY CATEGORIES  
THAT COULD EMIT AIR POLLUTANTS**

(1) Land Use Classifications – by Activity <sup>i</sup>	(2) Facility or Project Examples	(3) Key Pollutants <sup>ii,iii</sup>	(4) Air Pollution Permits <sup>iv</sup>
<b>COMMERCIAL/ LIGHT INDUSTRIAL: SHOPPING, BUSINESS, AND COMMERCIAL</b>			
▲ Primarily retail shops and stores, office, commercial activities, and light industrial or small business	Dry cleaners; drive-through restaurants; gas dispensing facilities; auto body shops; metal plating shops; photographic processing shops; textiles; apparel and furniture upholstery; leather and leather products; appliance repair shops; mechanical assembly cleaning; printing shops	VOCs, air toxics, including diesel PM, NOx, CO, SOx	Limited; Rules for applicable equipment
▲ Goods storage or handling activities, characterized by loading and unloading goods at warehouses, large storage structures, movement of goods, shipping, and trucking.	Warehousing; freight-forwarding centers; drop-off and loading areas; distribution centers	VOCs, air toxics, including diesel PM, NOx, CO, SOx	No <sup>v</sup>
<b>LIGHT INDUSTRIAL: RESEARCH AND DEVELOPMENT</b>			
▲ Medical waste at research hospitals and labs	Incineration; surgical and medical instrument manufacturers, pharmaceutical manufacturing, biotech research facilities	Air toxics, NOx, CO, SOx	Yes
▲ Electronics, electrical apparatus, components, and accessories	Computer manufacturer; integrated circuit board manufacturer; semiconductor production	Air toxics, VOCs	Yes
▲ College or university lab or research center	Medical waste incinerators; lab chemicals handling, storage and disposal	Air toxics, NOx, CO, SOx, PM10	Yes
▲ Research and development labs	Satellite manufacturer; fiber-optics manufacturer; defense contractors; space research and technology; new vehicle and fuel testing labs	Air toxics, VOCs	Yes
▲ Commercial testing labs	Consumer products; chemical handling, storage and disposal	Air toxics, VOCs	Yes



## APPENDIX A

(1) Land Use Classifications – by Activity <sup>i</sup>	(2) Facility or Project Examples	(3) Key Pollutants <sup>ii,iii</sup>	(4) Air Pollution Permits <sup>iv</sup>
<b>INDUSTRIAL: NON-ENERGY-RELATED</b>			
▲ Assembly plants, manufacturing facilities, industrial machinery	Adhesives; chemical; textiles; apparel and furniture upholstery; clay, glass, and stone products production; asphalt materials; cement manufacturers, wood products; paperboard containers and boxes; metal plating; metal and canned food product fabrication; auto manufacturing; food processing; printing and publishing; drug, vitamins, and pharmaceuticals; dyes; paints; pesticides; photographic chemicals; polish and wax; consumer products; metal and mineral smelters and foundries; fiberboard; floor tile and cover; wood and metal furniture and fixtures; leather and leather products; general industrial and metalworking machinery; musical instruments; office supplies; rubber products and plastics production; saw mills; solvent recycling; shingle and siding; surface coatings	VOCs, air toxics, including diesel PM, NOx, PM, CO, SOx	Yes
<b>INDUSTRIAL: ENERGY AND UTILITIES</b>			
▲ Water and sewer operations	Pumping stations; air vents; treatment	VOCs, air toxics, NOx, CO, SOx, PM10	Yes
▲ Power generation and distribution	Power plant boilers and heaters; portable diesel engines; gas turbine engines	NOx, diesel PM, NOx, CO, SOx, PM10, VOCs	Yes
▲ Refinery operations	Refinery boilers and heaters; coke cracking units; valves and flanges; flares	VOCs, air toxics, including diesel PM, NOx, CO, SOx, PM10	Yes
▲ Oil and gas extraction	Oil recovery systems; uncovered wells	NOx, diesel PM, VOCs, CO, SOx, PM10	Yes
▲ Gasoline storage, transmission, and marketing	Above and below ground storage tanks; floating roof tanks; tank farms; pipelines	VOCs, air toxics, including diesel PM, NOx, CO, SOx, PM10	Yes
▲ Solid and hazardous waste treatment, storage, and disposal activities.	Landfills; methane digester systems; process recycling facility for concrete and asphalt materials	VOCs, air toxics, NOx, CO, SOx, PM10	Yes
<b>CONSTRUCTION (NON-TRANSPORTATION)</b>			
	Building construction; demolition sites	PM (re-entrained road dust), asbestos, diesel PM, NOx, CO, SOx, PM10, VOCs	Limited; state and federal off-road equipment standards

## APPENDIX A

(1) Land Use Classifications – by Activity <sup>i</sup>	(2) Facility or Project Examples	(3) Key Pollutants <sup>ii,iii</sup>	(4) Air Pollution Permits <sup>iv</sup>
<b>DEFENSE</b>			
	Ordnance and explosives demolition; range and testing activities; chemical production; degreasing; surface coatings; vehicle refueling; vehicle and engine operations and maintenance	VOCs, air toxics, including diesel PM, NOx, CO, SOx, PM10	Limited; prescribed burning; equipment and solvent rules
<b>TRANSPORTATION</b>			
▲ Vehicular movement	Residential area circulation systems; parking and idling at parking structures; drive-through establishments; car washes; special events; schools; shopping malls, etc.	VOCs, NOx, PM (re-entrained road dust) air toxics e.g., benzene, diesel PM, formaldehyde, acetaldehyde, 1,3 butadiene, CO, SOx, PM10	No
▲ Road construction and surfacing	Street paving and repair; new highway construction and expansion	VOCs, air toxics, including diesel PM, NOx, CO, SOx, PM10	No
▲ Trains	Railroads; switch yards; maintenance yards	VOCs, NOx, CO, SOx, PM10, air toxics, including diesel PM	Limited; Applicable state and federal MV standards, and possible equipment rules
▲ Marine and port activities	Recreational sailing; commercial marine operations; hotelling operations; loading and un-loading; servicing; shipping operations; port or marina expansion; truck idling		
▲ Aircraft	Takeoff, landing, and taxiing; aircraft maintenance; ground support activities		
▲ Mass transit and school buses	Bus repair and maintenance		
<b>NATURAL RESOURCES</b>			
▲ Farming operations	Agricultural burning; diesel operated engines and heaters; small food processors; pesticide application; agricultural off-road equipment	Diesel PM, VOCs, NOx, PM10, CO, SOx, pesticides	Limited <sup>vi</sup> ; Agricultural burning requirements, applicable state and federal mobile source standards; pesticide rules
▲ Livestock and dairy operations	Dairies and feed lots	Ammonia, VOCs, PM10	Yes <sup>vii</sup>
▲ Logging	Off-road equipment e.g., diesel fueled chippers, brush hackers, etc.	Diesel PM, NOx, CO, SOx, PM10, VOCs	Limited; Applicable state/federal mobile source standards
▲ Mining operations	Quarrying or stone cutting; mining; drilling or dredging	PM10, CO, SOx, VOCs, NOx, and asbestos in some geographical areas	Applicable equipment rules and dust controls

## APPENDIX A

(1) Land Use Classifications – by Activity <sup>i</sup>	(2) Facility or Project Examples	(3) Key Pollutants <sup>ii,iii</sup>	(4) Air Pollution Permits <sup>iv</sup>
<b>RESIDENTIAL</b>			
Housing	Housing developments; retirement developments; affordable housing	Fireplace emissions (PM10, NOx, VOCs, CO, air toxics); Water heater combustion (NOx, VOCs, CO)	No <sup>vii</sup>
<b>ACADEMIC AND INSTITUTIONAL</b>			
▲ Schools, including school-related recreational activities	Schools; school yards; vocational training labs/classrooms such as auto repair/painting and aviation mechanics	Air toxics	Yes/No <sup>viii</sup>
▲ Medical waste	Incineration	Air toxics, NOx, CO, PM10	Yes
▲ Clinics, hospitals, convalescent homes		Air toxics	Yes

<sup>i</sup> These classifications were adapted from the American Planning Association's "Land Based Classification Standards." The Standards provide a consistent model for classifying land uses based on their characteristics. The model classifies land uses by refining traditional categories into multiple dimensions, such as activities, functions, building types, site development character, and ownership constraints. Each dimension has its own set of categories and subcategories. These multiple dimensions allow users to have precise control over land-use classifications. For more information, the reader should refer to the Association's website at <http://www.planning.org/LBCS/GeneralInfo/>.

<sup>ii</sup> This column includes key criteria pollutants and air toxic contaminants that are most typically associated with the identified source categories.

Additional information on specific air toxics that are attributed to facility categories can be found in ARB's Emission Inventory Criteria and Guidelines Report for the Air Toxics Hot Spots Program (May 15, 1997). This information can be viewed at ARB's web site at <http://www.arb.ca.gov/ab2588/final96/guide96.pdf>.

Criteria air pollutants are those air pollutants for which acceptable levels of exposure can be determined and for which an ambient air quality standard has been set. Criteria pollutants include ozone (formed by the reaction of volatile organic compounds and nitrogen oxides in the presence of sunlight), particulate matter, nitrogen dioxide, sulfur dioxide, carbon monoxide, and lead.

Volatile organic compounds (VOCs) combine with nitrogen oxides to form ozone, as well as particulate matter. VOC emissions result primarily from incomplete fuel combustion and the evaporation of chemical solvents and fuels. On-road mobile sources are the largest contributors to statewide VOC emissions. Stationary sources of VOC emissions include processes that use solvents (such as dry-cleaning, degreasing, and coating operations) and petroleum-related processes (such as petroleum refining, gasoline marketing and dispensing, and oil and gas extraction). Areawide VOC sources include consumer products, pesticides, aerosols and paints, asphalt paving and roofing, and other evaporative emissions.

Nitrogen oxides (NOx) are a group of gaseous compounds of nitrogen and oxygen, many of which contribute to the formation of ozone and particulate matter. Most NOx emissions are produced by the combustion of fuels. Mobile sources make up about 80 percent of the total statewide NOx emissions. Mobile sources include on-road vehicles and trucks, aircraft, trains, ships, recreational boats, industrial and construction equipment, farm

---

equipment, off-road recreational vehicles, and other equipment. Stationary sources of NOx include both internal and external combustion processes in industries such as manufacturing, food processing, electric utilities, and petroleum refining. Areawide source, which include residential fuel combustion, waste burning, and fires, contribute only a small portion of the total statewide NOx emissions, but depending on the community, may contribute to a cumulative air pollution impact.

Particulate matter (PM) refers to particles small enough to be breathed into the lungs (under 10 microns in size). It is not a single substance, but a mixture of a number of highly diverse types of particles and liquid droplets. It can be formed directly, primarily as dust from vehicle travel on paved and unpaved roads, agricultural operations, construction and demolition.

Carbon monoxide (CO) is a colorless and odorless gas that is directly emitted as a by-product of combustion. The highest concentrations are generally associated with cold stagnant weather conditions that occur during winter. CO problems tend to be localized.

An Air Toxic Contaminant (air toxic) is defined as an air pollutant that may cause or contribute to an increase in mortality or in serious illness, or which may pose a present or potential hazard to human health. Similar to criteria pollutants, air toxics are emitted from stationary, areawide, and mobile sources. They contribute to elevated regional and localized risks near industrial and commercial facilities and busy roadways. The ten compounds that pose the greatest statewide risk are: acetaldehyde; benzene; 1,3-butadiene; carbon tetrachloride; diesel particulate matter (diesel PM); formaldehyde; hexavalent chromium; methylene chloride; para-dichlorobenzene; and perchloroethylene. The risk from diesel PM is by far the largest, representing about 70 percent of the known statewide cancer risk from outdoor air toxics. The exhaust from diesel-fueled engines is a complex mixture of gases, vapors, and particles, many of which are known human carcinogens. Diesel PM is emitted from both mobile and stationary sources. In California, on-road diesel-fueled vehicles contribute about 26 percent of statewide diesel PM emissions, with an additional 72 percent attributed to other mobile sources such as construction and mining equipment, agricultural equipment, and other equipment. Stationary engines in shipyards, warehouses, heavy equipment repair yards, and oil and gas production operations contribute about two percent of statewide emissions. However, when this number is disaggregated to a sub-regional scale such as neighborhoods, the risk factor can be far greater.

<sup>iii</sup> The level of pollution emitted is a major determinant of the significance of the impact.

<sup>iv</sup> Indicates whether facility activities listed in column 4 are generally subject to local air district permits to operate. This does not include regulated products such as solvents and degreasers that may be used by sources that may not require an operating permit per se, e.g., a gas station or dry cleaner.

<sup>v</sup> Generally speaking, warehousing or distribution centers are not subject to local air district permits. However, depending on the district, motor vehicle fleet rules may apply to trucks or off-road vehicles operated and maintained by the facility operator. Additionally, emergency generators or internal combustion engines operated on the site may require an operating permit.

<sup>vi</sup> Authorized by recent legislation SB700.

<sup>vii</sup> Local air districts do not require permits for woodburning fireplaces inside private homes. However, some local air districts and land use agencies do have rules or ordinances that require new housing developments or home re-sales to install U.S. EPA –certified stoves. Some local air districts also ban residential woodburning during weather inversions that concentrate smoke in residential areas. Likewise, home water heaters are not subject to permits; however, new heaters could be subject to emission limits that are imposed by federal or local agency regulations.

<sup>viii</sup> Technical training schools that conduct activities normally permitted by a local air district could be subject to an air permit.



**LAND USE-BASED REFERENCE TOOLS TO EVALUATE  
NEW PROJECTS FOR POTENTIAL AIR POLLUTION IMPACTS**

Land use agencies generally have a variety of tools and approaches at hand, or accessible from local air districts that can be useful in performing an analysis of potential air pollution impacts associated with new projects. These tools and approaches include:

- Base map of the city or county planning area and terrain elevations.
- General Plan designations of land use (existing and proposed).
- Zoning maps.
- Land use maps that identify existing land uses, including the location of facilities that are permitted or otherwise regulated by the local air district. Land use agencies should consult with their local air district for information on regulated facilities.
- Demographic data, e.g., population location and density, distribution of population by income, distribution of population by ethnicity, and distribution of population by age. The use of population data is a normal part of the planning process. However, from an air quality perspective, socioeconomic data is useful to identify potential community health and environmental justice issues.
- Emissions, monitoring, and risk-based maps created by the ARB or local air districts that show air pollution-related health risk by community across the state.
- Location of public facilities that enhance community quality of life, including parks, community centers, and open space.
- Location of industrial and commercial facilities and other land uses that use hazardous materials, or emit air pollutants. These include chemical storage facilities, hazardous waste disposal sites, dry cleaners, large gas dispensing facilities, auto body shops, and metal plating and finishing shops.
- Location of sources or facility types that result in diesel on-road and off-road emissions, e.g., stationary diesel power generators, forklifts, cranes, construction equipment, on-road vehicle idling, and operation of transportation refrigeration units. Distribution centers, marine terminals and ports, rail yards, large industrial facilities, and facilities that handle bulk goods are all examples of complex facilities where these types of emission sources are frequently concentrated.<sup>1</sup> Very large facilities, such as ports, marine terminals, and airports, could be analyzed regardless of proximity to a receptor if they are within the modeling area.
- Location and zoning designations for existing and proposed schools, buildings, or outdoor areas where sensitive individuals may live or play.
- Location and density of existing and proposed residential development.
- Zoning requirements, property setbacks, traffic flow requirements, and idling restrictions for trucks, trains, yard hostlers<sup>2</sup>, construction equipment, or school buses.
- Traffic counts (including diesel truck traffic counts), within a community to validate or augment existing regional motor vehicle trip and speed data.

---

<sup>1</sup> The ARB is currently evaluating the types of facilities that may act as complex point sources and developing methods to identify them.

<sup>2</sup> Yard hostler means a tractor less than 300 horsepower that is used to transfer semi-truck or tractor-trailer containers in and around storage, transfer, or distribution yards or areas and is often equipped with a hydraulic lifting fifth wheel for connection to trailer containers.



**ARB AND LOCAL AIR DISTRICT INFORMATION AND TOOLS  
CONCERNING CUMULATIVE AIR POLLUTION IMPACTS**

It is the ARB's policy to support research and data collection activities toward the goal of reducing cumulative air pollution impacts. These efforts include updating and improving the air toxics emissions inventory, performing special air monitoring studies in specific communities, and conducting a more complete assessment of non-cancer health effects associated with air toxics and criteria pollutants.<sup>1</sup> This information is important because it helps us better understand links between air pollution and the health of sensitive individuals -- children, the elderly, and those with pre-existing serious health problems affected by air quality.

ARB is working with CAPCOA and OEHHA to improve air pollutant data and evaluation tools to determine when and where cumulative air pollution impacts may be a problem. The following provides additional information on this effort.

**How are emissions assessed?**

Detailed information about the sources of air pollution in an area is collected and maintained by local air districts and the ARB in what is called an emission inventory. Emission inventories contain information about the nature of the business, the location, type and amount of air pollution emitted, the air pollution-producing processes, the type of air pollution control equipment, operating hours, and seasonal variations in activity. Local districts collect emission inventory data for most stationary source categories.

Local air districts collect air pollution emission information directly from facilities and businesses that are required to obtain an air pollution operating permit. Local air districts use this information to compile an emission inventory for areas within their jurisdiction. The ARB compiles a statewide emission inventory based on the information collected by the ARB and local air districts. Local air districts provide most of the stationary source emission data, and ARB provides mobile source emissions as well as some areawide emission sources such as consumer products and paints. ARB is also developing map-based tools that will display information on air pollution sources.

Criteria pollutant data have been collected since the early 1970's, and toxic pollutant inventories began to be developed in the mid-1980's.

---

<sup>1</sup> A criteria pollutant is any air pollutant for which EPA has established a National Ambient Air Quality Standard or for which California has established a State Ambient Air Quality Standard, including: carbon monoxide, lead, nitrogen oxides, ozone, particulates and sulfur oxides. Criteria pollutants are measured in each of California's air basins to determine whether the area meets or does not meet specific federal or state air quality standards. Air toxics or air toxic contaminants are listed pollutants recognized by California or EPA as posing a potential risk to health.



### **How is the toxic emission inventory developed?**

Emissions data for toxic air pollutants is a high priority for communities because of concerns about potential health effects. Most of ARB's air toxics data is collected through the toxic "Hot Spots" program. Local air districts collect emissions data from industrial and commercial facilities. Facilities that exceed health-based thresholds are required to report their air toxics emissions as part of the toxic "Hot Spots" program and update their emissions data every four years. Facilities are required to report their air toxics emissions data if there is an increase that would trigger the reporting threshold of the hotspots program. Air toxics emissions from motor vehicles and consumer products are estimated by the ARB. These estimates are generally regional in nature, reflecting traffic and population.

The ARB also maintains chemical speciation profiles that can be used to estimate toxics emissions when no toxic emissions data is available.

### **What additional toxic emissions information is needed?**

In order to assess cumulative air pollution impacts, updated information from individual facilities is needed. Even for sources where emissions data are available, additional information such as the location of emissions release points is often needed to better model cumulative impacts. In terms of motor vehicles, emissions data are currently based on traffic models that only contain major roads and freeways. Local traffic data are needed so that traffic emissions can be more accurately assigned to specific streets and roads. Local information is also needed for off-road emission sources, such as ships, trains, and construction equipment. In addition, hourly maximum emissions data are needed for assessing acute air pollution impacts.

### **What work is underway?**

ARB is working with CAPCOA to improve toxic emissions data, developing a community health air pollution information system to improve access to emission information, conducting neighborhood assessment studies to better understand toxic emission sources, and conducting surveys of sources of toxic pollutants.

### **How is air pollution monitored?**

While emissions data identify how much air pollution is going into the air, the state's air quality monitoring network measures air pollutant levels in outdoor air. The statewide air monitoring network is primarily designed to measure regional exposure to air pollutants, and consists of more than 250 air monitoring sites.

The air toxics monitoring network consists of approximately 20 permanent sites. These sites are supplemented by special monitoring studies conducted by ARB and local air districts. These sites measure approximately sixty toxic air pollutants. Diesel PM, which is the major driver of urban air toxic risk, is not monitored directly. Ten of the

60 toxic pollutants, not including diesel, account for most of the remaining potential cancer risk in California urban areas.

### **What additional monitoring has been done?**

Recently, additional monitoring has been done to look at air quality at the community level. ARB's community monitoring was conducted in six communities located throughout the state. Most sites were in low-income, minority communities located near major sources of air pollution, such as refineries or freeways. The monitoring took place for a year or more in each community, and included measurements of both criteria and toxic pollutants.

### **What is being learned from community monitoring?**

In some cases, the ARB or local air districts have performed air quality monitoring or modeling studies covering a particular region of the state. When available, these studies can give information about regional air pollution exposures.

The preliminary results of ARB's community monitoring are providing insights into air pollution at the community level. Urban background levels are a major contributor to the overall risk from air toxics in urban areas, and this urban background tends to mask the differences between communities. When localized elevated air pollutant levels were measured, they were usually associated with local ground-level sources of toxic pollutants. The most common source of this type was busy streets and freeways. The impact these ground-level sources had on local air quality decreased rapidly with distance from the source. Pollutant levels usually returned to urban background levels within a few hundred meters of the source.

These results indicate that tools to assess cumulative impacts must be able to account for both localized, near-source impacts, as well as regional background air pollution. The tools that ARB is developing for this purpose are air quality models.

### **How can air quality modeling be used?**

While air monitoring can directly measure cumulative exposure to air pollution, it is limited because all locations cannot be monitored. To address this, air quality modeling provides the capability to estimate exposure when air monitoring is not feasible. Air quality modeling can be refined to assess local exposure, identify locations of potential hot spots, and identify the relative contribution of emission sources to exposure at specific locations. The ARB has used this type of information to develop regional cumulative risk maps that estimate the cumulative cancer air pollution risk for most of California. While these maps only show one air pollution-related health risk, it does provide a useful starting point.

**What is needed for community modeling?**

Air quality models have been developed to assess near-source impacts, but they have very exacting data requirements. These near-source models estimate the impact of local sources, but do not routinely include the contribution from regional air pollution background. To estimate cumulative air pollution exposure at a neighborhood scale, a modeling approach needs to combine features of both micro-scale and regional models.

In addition, improved methods are needed to assess near-source impacts under light and variable wind conditions, when high local concentrations are more likely to occur. A method for modeling long-term exposure to air pollutants near freeways and other high traffic areas is also needed.

**What modeling work has ARB developed?**

A key component of ARB's Community Health Program is the Neighborhood Assessment Program (NAP). As described later in this section, the NAP studies are being conducted to better understand pollution impacts at the community level. Through two such studies conducted in Barrio Logan (San Diego) and Wilmington (Los Angeles), ARB is refining community-level modeling methodologies. Regional air toxics modeling is also being performed to better understand regional air pollution background levels.

In a parallel effort, ARB is developing modeling protocols for estimating cumulative emissions, exposure, and risk from air pollution. The protocols will cover modeling approaches and uncertainties, procedures for running the models, the development of statewide risk maps, and methods for estimating health risks. The protocols are subject to an extensive peer review process prior to release.

**How are air pollution impacts on community health assessed?**

On a statewide basis, ARB's toxic air contaminant program identifies and reduces public exposure to air toxics. The focus of the program has been on reducing potential cancer risk, because monitoring results show potential urban cancer risk levels are too high. ARB has also looked for potential non-cancer risks based on health reference levels provided by OEHHA. On a regional basis, the pollutants measured in ARB's toxic monitoring network are generally below the OEHHA non-cancer reference exposure levels.

As part of its community health program, the ARB is looking at potential cancer and non-cancer risk. This could include chronic or acute health effects. If the assessment work shows elevated exposures on a localized basis, ARB will work with OEHHA to assess the health impacts.

**What tools has ARB developed to assess cumulative air pollution impacts?**

ARB has developed the following tools and reports to assist land use agencies and local air districts assess and reduce cumulative emissions, exposure, and risk on a neighborhood scale.

**Statewide Risk Maps**

ARB has produced regional risk maps that show the statewide trends for Southern and Central California in estimated potential cancer risk from air toxics between 1990 and 2010.<sup>2</sup> These maps will supplement U.S. EPA's ASPEN model and are available on the ARB's Internet site. These maps are best used to obtain an estimate of the regional background air pollution health risk and are not detailed enough to estimate the exact risk at a specific location.

ARB also has maps that focus in more detail on smaller areas that fall within the Southern and Central California regions for these same modeled years. The finest visual resolution available in the maps on this web site is two by two kilometers. These maps are not detailed enough to assess individual neighborhoods or facilities.

**Community Health Air Pollution Information System (CHAPIS)**

CHAPIS is an Internet-based procedure for displaying information on emissions from sources of air pollution in an easy to use mapping format. CHAPIS uses Geographical Information System (GIS) software to deliver interactive maps over the Internet. CHAPIS relies on emission estimates reported to the ARB's emission inventory database - California Emissions Inventory Development and Reporting System, or CEIDARS.

Through CHAPIS, air district staff can quickly and easily identify pollutant sources and emissions within a specified area. CHAPIS contains information on air pollution emissions from selected large facilities and small businesses that emit criteria and toxic air pollutants. It also contains information on air pollution emissions from motor vehicle and areawide emissions. CHAPIS does not contain information on every source of air pollution or every air pollutant. It is a major long-term objective of CHAPIS to include all of the largest air pollution sources and those with the highest documented air pollution risk. CHAPIS will be updated on a periodic basis and additional facilities will be added to CHAPIS as more data becomes available.

CHAPIS is being developed in stages to assure data quality. The initial release of CHAPIS will include facilities emitting 10 or more tons per year of nitrogen oxides, sulfur dioxide, carbon monoxide, PM10, or reactive organic gases; air toxics from refineries and power plants of 50 megawatts or more; and facilities that conducted health risk

---

<sup>2</sup>ARB maintains state trends and local potential cancer risk maps that show statewide trends in potential inhalable cancer risk from air toxics between 1990 and 2010. This information can be viewed at ARB's web site at <http://www.arb.ca.gov/toxics/cti/hlthrisk/hlthrisk.htm>

assessments under the California Air Toxics “Hot Spots” Information and Assessment Program.<sup>3</sup>

CHAPIS can be used to identify the emission contributions from mobile, area, and point sources on that community.

### **“Hot Spots” Analysis and Reporting Program (HARP)**

HARP<sup>4</sup> is a software package available from the ARB and is designed with air quality professionals in mind. It models emissions and release data from one or more facilities to estimate the potential health risk posed by the selected facilities on the neighboring community. HARP uses the latest risk assessment guidelines published by OEHHA.

With HARP, a user can perform the following tasks:

- Create and manage facility databases;
- Perform air dispersion modeling;
- Conduct health risk analyses;
- Output data reports; and
- Output results to GIS mapping software.

HARP can model downwind concentrations of air toxics based on the calculated emissions dispersion at a single facility. HARP also has the capability of assessing the risk from multiple facilities, and for multiple locations of concern near those facilities. While HARP has the capability to assess multiple source impacts, there had been limited application of the multiple facility assessment function in the field at the time of HARP’s debut in 2003. HARP can also evaluate multi-pathway, non-inhalation health risk resulting from air pollution exposure, including skin and soil exposure, and ingestion of meat and vegetables contaminated with air toxics, and other toxics that have accumulated in a mother’s breast milk.

### **Neighborhood Assessment Program (NAP)**

The NAP<sup>5</sup> has been a key component of ARB’s Community Health Program. It includes the development of tools that can be used to perform assessments of cumulative air pollution impacts on a neighborhood scale. The NAP studies have been done to better understand how air pollution affects individuals at the neighborhood level. Thus far, ARB has conducted neighborhood scale assessments in Barrio Logan and Wilmington.

As part of these studies, ARB is collecting data and developing a modeling protocol that can be used to conduct cumulative air pollution impact assessments. Initially these

---

<sup>3</sup> California Health & Safety Code section 44300, et seq.

<sup>4</sup> More detailed information can be found on ARB’s website at:

<http://www.arb.ca.gov/toxics/harp/harp.htm>

<sup>5</sup> For more information on the Program, please refer to: <http://www.arb.ca.gov/ch/programs/nap/nap.htm>

assessments will focus on cumulative inhalation cancer health risk and chronic non-cancer impacts. The major challenge is developing modeling methods that can combine both regional and localized air pollution impacts, and identifying the critical data necessary to support these models. The objective is to develop methods and tools from these studies that can ultimately be applied to other areas of the state. In addition, the ARB plans to use these methods to replace the ASPEN regional risk maps currently posted on the ARB Internet site.

### **Urban Emissions Model (URBEMIS)**

URBEMIS<sup>6</sup> is a computer program that can be used to estimate emissions associated with land development projects in California such as residential neighborhoods, shopping centers, office buildings, and construction projects. URBEMIS uses emission factors available from the ARB to estimate vehicle emissions associated with new land uses. URBEMIS estimates sulfur dioxide emissions from motor vehicles in addition to reactive organic gases, nitrogen oxides, carbon monoxide, and PM10.

### **Land-Use Air Quality Linkage Report<sup>7</sup>**

This report summarizes data currently available on the relationships between land use, transportation and air quality. It also highlights strategies that can help to reduce the use of the private automobile. It also briefly summarizes two ARB-funded research projects. The first project analyzes the travel patterns of residents living in five higher density, mixed use neighborhoods in California, and compares them to travel in more auto-oriented areas. The second study correlates the relationship between travel behavior and community characteristics, such as density, mixed land uses, transit service, and accessibility for pedestrians.

---

<sup>6</sup> For more information on this model, please refer to ARB's website at <http://www.arb.ca.gov/html/soft.htm>.

<sup>7</sup>To access this report, please refer to ARB's website or click on: <http://www.arb.ca.gov/ch/programs/link97.pdf>



## LAND USE AND AIR QUALITY AGENCY ROLES IN THE LAND USE PROCESS

A wide variety of federal, state, and local government agencies are responsible for regulatory, planning, and siting decisions that can have an impact on air pollution. They include local land use agencies, regional councils of government, school districts, local air districts, ARB, the California Department of Transportation (Caltrans), and the Governor's Office of Planning and Research (OPR) to name a few. This Section will focus on the roles and responsibilities of local and state agencies. The role of school districts will be discussed in Appendix E.

### Local Land Use Agencies

Under the State Constitution, land use agencies have the primary authority to plan and control land use.<sup>1</sup> Each of California's incorporated cities and counties are required to adopt a comprehensive, long-term General Plan.<sup>2</sup>

The General Plan's long-term goals are implemented through zoning ordinances. These are local laws adopted by counties and cities that describe for specific areas the kinds of development that will be allowed within their boundaries.

Land use agencies are also the lead for doing environmental assessments under CEQA for new projects that may pose a significant environmental impact, or for new or revised General Plans.

### Local Agency Formation Commissions (LAFCOs)

Operating in each of California's 58 counties, LAFCOs are composed of local elected officials and public members who are responsible for coordinating changes in local governmental boundaries, conducting special studies that review ways to reorganize, simplify, and streamline governmental structures, and preparing a sphere of influence for each city and special district within each county. Each Commission's efforts are directed toward seeing that local government services are provided efficiently and economically while agricultural and open-space lands are protected. LAFCO decisions strive to balance the competing needs in California for efficient services, affordable housing, economic opportunity, and conservation of natural resources.

---

<sup>1</sup> The legal basis for planning and land use regulation is the "police power" of the city or county to protect the public's health, safety and welfare. The California Constitution gives cities and counties the power to make and enforce all local police, sanitary and other ordinances and regulations not in conflict with general laws. State law reference: California Constitution, Article XI §7.

<sup>2</sup>OPR General Plan Guidelines, 2003:

[http://www.opr.ca.gov/planning/PDFs/General\\_Plan\\_Guidelines\\_2003.pdf](http://www.opr.ca.gov/planning/PDFs/General_Plan_Guidelines_2003.pdf)



## Councils of Government (COG)

COGs are organizations composed of local counties and cities that serve as a focus for the development of sound regional planning, including plans for transportation, growth management, hazardous waste management, and air quality. They can also function as the metropolitan planning organization for coordinating the region's transportation programs. COGs also prepare regional housing need allocations for updates of General Plan housing elements.

## Local Air Districts

Under state law, air pollution control districts or air quality management districts (local air districts) are the local government agencies responsible for improving air quality and are generally the first point of contact for resolving local air pollution issues or complaints. There are 35 local air districts in California<sup>3</sup> that have authority and primary responsibility for regional clean air planning. Local air districts regulate stationary sources of air pollutants within their jurisdiction including but not limited to industrial and commercial facilities, power plants, construction activities, outdoor burning, and other non-mobile sources of air pollution. Some local air districts also regulate public and private motor vehicle fleet operators such as public bus systems, private shuttle and taxi services, and commercial truck depots.

### ■ Regional Clean Air Plans

Local air districts are responsible for the development and adoption of clean air plans that protect the public from the harmful effects of air pollution. These plans incorporate strategies that are necessary to attain ambient air quality standards. Also included in these regional air plans are ARB and local district measures to reduce statewide emissions from mobile sources, consumer products, and industrial sources.

### ■ Facility-Specific Considerations

*Permitting.* In addition to the planning function, local air districts adopt and enforce regulations, issue permits, and evaluate the potential environmental impacts of projects.

Pollution is regulated through permits and technology-based rules that limit emissions from operating units within a facility or set standards that vehicle fleet operators must meet. Permits to construct and permits to operate contain very specific requirements and conditions that tell each regulated source what it must do to limit its air pollution in compliance with local air district rules, regulations, and state law. Prior to receiving a permit, new facilities must go through a New Source Review (NSR) process that establishes air pollution control requirements for the facility. Permit conditions are typically contained in the permit to operate and specify requirements that businesses must follow; these may include limits on the amount of pollution that can be emitted, the

---

<sup>3</sup> Contact information for local air districts in California is listed in the front of this Handbook.

type of pollution control equipment that must be installed and maintained, and various record-keeping requirements.

Local air districts also notify the public about new permit applications for major new facilities, or major modifications to existing facilities that seek to locate within 1,000 feet of a school.

Local air districts can also regulate other types of sources to reduce emissions. These include regulations to reduce emissions from the following sources:

- hazardous materials in products used by industry such as paints, solvents, and degreasers;
- agricultural and residential burning;
- leaking gasoline nozzles at service stations;
- public fleet vehicles such as sanitation trucks and school buses; and
- fugitive or uncontrolled dust at construction sites.

However, while emissions from industrial and commercial sources are typically subject to the permit authority of the local air district, sensitive sites such as a day care center, convalescent home, or playground are not ordinarily subject to an air permit. Local air district permits address the air pollutant emissions of a project but not its location.

Under the state's air toxics program, local air districts regulate air toxic emissions by adopting ARB air toxic control measures, or more stringent district-specific requirements, and by requiring individual facilities to perform a health risk assessment if emissions at the source exceed district-specific health risk thresholds<sup>4, 5</sup> (See the section on ARB programs for a more detailed summary of this program).

One approach by which local air districts regulate air toxics emissions is through the "Hot Spots" program.<sup>6</sup> The risk assessments submitted by the facilities under this

---

<sup>4</sup> Cal/EPA's Office of Environmental Health Hazard Assessment has published "A Guide to Health Risk Assessment" for lay people involved in environmental health issues, including policymakers, businesspeople, members of community groups, and others with an interest in the potential health effects of toxic chemicals. To access this information, please refer to <http://www.oehha.ca.gov/pdf/HRsguide2001.pdf>

<sup>5</sup> Section 44306 of the California Health & Safety Code defines a health risk assessment as a detailed comprehensive analysis that a polluting facility uses to evaluate and predict the dispersion of hazardous substances in the environment and the potential for exposure of human populations, and to assess and quantify both the individual and population-wide health risks associated with those levels of exposure.

<sup>6</sup> AB-2588 (the Air Toxics "Hot Spots" Information and Assessment Act) requires local air districts to prioritize facilities by high, intermediate, and low priority categories to determine which must perform a health risk assessment. Each district is responsible for establishing the prioritization score threshold at which facilities are required to prepare a health risk assessment. In establishing priorities for each facility, local air districts must consider the potency, toxicity, quantity, and volume of hazardous materials released from the facility, the proximity of the facility to potential receptors, and any other factors that the district determines may indicate that the facility may pose a significant risk. All facilities within the highest category must prepare a health risk assessment. In addition, each district may require facilities in the intermediate and low priority categories to also submit a health risk assessment.

**Table D-1  
Local Sources of Air Pollution, Responsible Agencies,  
and Associated Regulatory Programs**

Source	Examples	Primary Agency	Applicable Regulations
Large Stationary	Refineries, power plants, chemical facilities, certain manufacturing plants	Local air districts	Operating permit rules Air Toxics “Hot Spots” Law (AB 2588) Local district rules Air Toxic Control Measures (ATCMs)* New Source Review rules Title V permit rules
Small Stationary	Dry cleaners, auto body shops, welders, chrome plating facilities, service stations, certain manufacturing plants	Local air districts	Operating permit conditions, Air Toxics “Hot Spots” Law (AB 2588) Local district rules ATCMs* New Source Review rules
Mobile (non-fleet)	Cars, trucks, buses	ARB	Emission standards Cleaner-burning fuels (e.g., unleaded gasoline, low-sulfur diesel) Inspection and repair programs (e.g., Smog Check)
Mobile Equipment	Construction equipment	ARB, U.S. EPA	ARB rules U.S. EPA rules
Mobile (fleet)	Truck depots, school buses, taxi services	Local air districts, ARB	Local air district rules ARB urban bus fleet rule
Areawide	Paints and consumer products such as hair spray and spray paint	Local air district, ARB	ARB rules Local air district rules

\*ARB adopts ATCMs, but local air districts have the responsibility to implement and enforce these measures or more stringent ones.

program are reviewed by OEHHA and approved by the local air district. Risk assessments are available by contacting the local air district.

**Enforcement.** Local air districts also take enforcement action to ensure compliance with air quality requirements. They enforce air toxic control measures, agricultural and residential burning programs, gasoline vapor control regulations, laws that prohibit air pollution nuisances, visible emission limits, and many other requirements designed to

clean the air. Local districts use a variety of enforcement tools to ensure compliance. These include notices of violation, monetary penalties, and abatement orders. Under some circumstances, a permit may be revoked.

### ■ Environmental Review

As required by the California Environmental Quality Act (CEQA), local air districts also review and comment on proposed land use plans and development projects that can have a significant effect on the environment or public health.<sup>7</sup>

### California Air Resources Board

The ARB is the air pollution control agency at the state level that is responsible for the preparation of air plans required by state and federal law. In this regard, it coordinates the activities of all local air districts to ensure all statutory requirements are met and to reduce air pollution emissions for sources under its jurisdiction.

Motor vehicles are the single largest emissions source category under ARB's jurisdiction as well as the largest overall emissions source statewide. ARB also regulates emissions from other mobile equipment and engines as well as emissions from consumer products such as hair sprays, perfumes, cleaners, and aerosol paints.

### Air Toxics Program

Under state law, the ARB has a critical role to play in the identification, prioritization, and control of air toxic emissions. The ARB statewide comprehensive air toxics program was established in the early 1980's. The Toxic Air Contaminant Identification and Control Act of 1983 (AB 1807, Tanner 1983) created California's program to reduce exposure to air toxics.<sup>8</sup> The Air Toxics "Hot Spots" Information and Assessment Act (Hot Spots program) supplements the AB 1807 program, by requiring a statewide air toxics inventory, notification of people exposed to a significant health risk, and facility plans to reduce these risks.

Under AB 1807, the ARB is required to use certain criteria to prioritize the identification and control of air toxics. In selecting substances for review, the ARB must consider criteria relating to emissions, exposure, and health risk, as well as persistence in the atmosphere, and ambient concentrations in the community. AB 1807 also requires the ARB to use available information gathered from the Hot Spots program when prioritizing compounds.

The ARB identifies pollutants as toxic air contaminants and adopts statewide air toxic control measures (ATCMs). Once ARB adopts an ATCM, local air districts must

---

<sup>7</sup> Section 4 of this Handbook contains more information on the CEQA process.

<sup>8</sup> For a general background on California's air toxics program, the reader should refer to ARB's website at <http://www.arb.ca.gov/toxics/tac/appendxb.htm>.

implement the measure, or adopt and implement district-specific measures that are at least as stringent as the state standard. Taken in the aggregate, these ARB programs will continue to further reduce emissions, exposure, and health risk statewide.

With regard to the land use decision-making process, ARB, in conjunction with local air districts, plays an advisory role by providing technical information on land use-related air issues.

### **Other Agencies**

#### *Governor's Office of Planning and Research (OPR)*

In addition to serving as the Governor's advisor on land use planning, research, and liaison with local government, OPR develops and implements the state's policy on land use planning and coordinates the state's environmental justice programs. OPR updated its General Plan Guidelines in 2003 to highlight the importance of sustainable development and environmental justice policies in the planning process. OPR also advises project proponents and government agencies on CEQA provisions and operates the State Clearinghouse for environmental and federal grant documents.

#### *California Department of Housing and Community Development*

The Department of Housing and Community Development (HCD) administers a variety of state laws, programs and policies to preserve and expand housing opportunities, including the development of affordable housing. All local jurisdictions must update their housing elements according to a staggered statutory schedule, and are subject to certification by HCD. In their housing elements, cities and counties are required to include a land inventory which identifies and zones sites for future residential development to accommodate a mix of housing types, and to remove barriers to the development of housing.

An objective of state housing element law is to increase the overall supply and affordability of housing. Other fundamental goals include conserving existing affordable housing, improving the condition of the existing housing stock, removing regulatory barriers to housing production, expanding equal housing opportunities, and addressing the special housing needs of the state's most vulnerable residents (frail elderly, disabled, large families with children, farmworkers, and the homeless).

#### *Transportation Agencies*

Transportation agencies can also influence mobile source-related emissions in the land use decision-making process. Local transportation agencies work with land use agencies to develop a transportation (circulation) element for the General Plan. These local government agencies then work with other transportation-related agencies, such as the Congestion Management Agency (CMA), Metropolitan Planning Organization

(MPO), Regional Transportation Planning Agency (RTPA), and Caltrans to develop long and short range transportation plans and projects.

Caltrans is the agency responsible for setting state transportation goals and for state transportation planning, design, construction, operations and maintenance activities. Caltrans is also responsible for delivering California's multibillion-dollar state Transportation Improvement Program, a list of transportation projects that are approved for funding by the California Transportation Commission in a 4-year cycle.

When safety hazards or traffic circulation problems are identified in the existing road system, or when land use changes are proposed such as a new residential subdivision, shopping mall or manufacturing center, Caltrans and/or the local transportation agency ensure the projects meet applicable state, regional, and local goals and objectives.

Caltrans also evaluates transportation-related projects for regional air quality impacts, from the perspective of travel-related emissions as well as road congestion and increases in road capacity (new lanes).

### *California Energy Commission (CEC)*

The CEC is the state's CEQA lead agency for permitting large thermal power plants (50 megawatts or greater). The CEC works closely with local air districts and other federal, state and local agencies to ensure compliance with applicable laws, ordinances, regulations and standards in the permitting, construction, operation and closure of such plants. The CEC uses an open and public review process that provides communities with outreach and multiple opportunities to participate and be heard. In addition to its comprehensive environmental impact and engineering design assessment process, the CEC also conducts an environmental justice evaluation. This evaluation involves an initial demographic screening to determine if a qualifying minority or low-income population exists in the vicinity of the proposed project. If such a population is present, staff considers possible environmental justice impacts including from associated project emissions in its technical assessments.<sup>9</sup>

### *Department of Pesticides Regulation (DPR)*

Pesticides are industrial chemicals produced specifically for their toxicity to a target pest. They must be released into the environment to do their job. Therefore, regulation of pesticides focuses on using toxicity and other information to ensure that when pesticides are used according to their label directions, potential for harm to people and the environment is minimized. DPR imposes strict controls on use, beginning before pesticide products can be sold in California, with an extensive scientific program to ensure they can be used safely. DPR and county enforcement staff tracks the use of pesticides to ensure that pesticides are used properly. DPR collects periodic

---

<sup>9</sup> See California Energy Commission, "Environmental Performance Report," July 2001 at [http://www.energy.ca.gov/reports/2001-11-20\\_700-01-001.PDF](http://www.energy.ca.gov/reports/2001-11-20_700-01-001.PDF)

measurements of any remaining amounts of pesticides in water, air, and on fresh produce. If unsafe levels are found, DPR requires changes in how pesticides are used, to reduce the possibility of harm. If this cannot be done - that is, if a pesticide cannot be used safely - use of the pesticide will be banned in California.<sup>10</sup>

### *Federal Agencies*

Federal agencies have permit authority over activities on federal lands and certain resources, which have been the subject of congressional legislation, such as air, water quality, wildlife, and navigable waters. The U.S. Environmental Protection Agency generally oversees implementation of the federal Clean Air Act, and has broad authority for regulating certain activities such as mobile sources, air toxics sources, the disposal of toxic wastes, and the use of pesticides. The responsibility for implementing some federal regulatory programs such as those for air and water quality and toxics is delegated by management to specific state and local agencies. Although federal agencies are not subject to CEQA they must follow their own environmental process established under the National Environmental Policy Act (NEPA).

---

<sup>10</sup> For more information, the reader is encouraged to visit the Department of Pesticide Regulation web site at [www.cdpr.ca.gov/docs/empm/pubs/tacmenu.htm](http://www.cdpr.ca.gov/docs/empm/pubs/tacmenu.htm).

**SPECIAL PROCESSES THAT APPLY TO SCHOOL SITING**

The [California Education Code](#) and the [California Public Resources Code](#) place primary authority for siting public schools with the local school district, which is the 'lead agency' for purposes of CEQA. The California Education Code requires public school districts to notify the local planning agency about siting a new public school or expanding an existing school. The planning agency then reports back to the school district regarding a project's conformity with the adopted General Plan. However, school districts can overrule local zoning and land use designations for schools if they follow specified procedures. In addition, all school districts must evaluate new school sites using site selection standards established in Section 14010 of Title 5 of the California Code of Regulations. Districts seeking state funding for school site acquisition must also obtain site approval from the California Department of Education.

Before making a final decision on a school site acquisition, a school district must comply with CEQA and evaluate the proposed site acquisition/new school project for air emissions and health risks by preparing and certifying an environmental impact report or negative declaration. Both the California Education Code section 17213 and the California Public Resources Code section 21151.8 require school districts to consult with administering agencies and local air districts when preparing the environmental assessment. Such consultation is required to identify both permitted and non-permitted "facilities" that might significantly affect health at the new site. These facilities include, but are not limited to, freeways and other busy traffic corridors, large agricultural operations, and rail yards that are within one-quarter mile of the proposed school site, and that might emit hazardous air emissions, or handle hazardous or acutely hazardous materials, substances, or waste.

As part of the CEQA process and before approving a school site, the school district must make a finding that either it found none of the facilities or significant air pollution sources, or alternatively, if the school district finds that there are such facilities or sources, it must determine either that they pose no significant health risks, or that corrective actions by another governmental entity would be taken so that there would be no actual or potential endangerment to students or school workers.

In addition, if the proposed school site boundary is within 500 feet of the edge of the closest traffic lane of a freeway or traffic corridor that has specified minimum average daily traffic counts, the school district is required to determine through specified risk assessment and air dispersion modeling that neither short-term nor long term exposure poses significant health risks to pupils.

State law changes effective January 1, 2004 (SB352, Escutia 2003, amending Education Code section 17213 and Public Resources Code section 21151.8) also provides for cases in which the school district cannot make either of those two findings and cannot find a suitable alternative site. When this occurs, the school district must adopt a statement of over-riding considerations, as part of an environmental impact



report, that the project should be approved based on the ultimate balancing of the merits.

Some school districts use a standardized assessment process to determine the environmental impacts of a proposed school site. In the assessment process, school districts can use maps and other available information to evaluate risk, including a local air district's database of permitted source emissions. School districts can also perform field surveys and record searches to identify and calculate emissions from non-permitted sources within one-quarter mile radius of a proposed site. Traffic count data and vehicular emissions data can also be obtained from Caltrans for major roadways and freeways in proximity to the proposed site to model potential emissions impacts to students and school employees. This information is available from the local COG, Caltrans, or local cities and counties for non-state maintained roads.

## GENERAL PROCESSES USED BY LAND USE AGENCIES TO ADDRESS AIR POLLUTION IMPACTS

There are several separate but related processes for addressing the air pollution impacts of land use projects. One takes place as part of the planning and zoning function. This consists of preparing and implementing goals and policies contained in county or city General Plans, community or area plans, and specific plans governing land uses such as residential, educational, commercial, industrial, and recreational activities. It also includes recommending locations for thoroughfares, parks and other public improvements.

Land use agencies also have a permitting function that includes performing environmental reviews and mitigation when projects may pose a significant environmental impact. They conduct inspections for zoning permits issued, enforce the zoning regulations and issue violations as necessary, issue zoning certificates of compliance, and check compliance when approving certificates of occupancy.

### **Planning**

#### ■ **General Plan<sup>1</sup>**

The General Plan is a local government “blueprint” of existing and future anticipated land uses for long-term future development. It is composed of the goals, policies, and general elements upon which land use decisions are based. Because the General Plan is the foundation for all local planning and development, it is an important tool for implementing policies and programs beneficial to air quality. Local governments may choose to adopt a separate air quality element into their General Plan or to integrate air quality-beneficial objectives, policies, and strategies in other elements of the Plan, such as the land use, circulation, conservation, and community design elements.

More information on General Plan elements is contained in Appendix D.

#### ■ **Community Plans**

Community or area plans are terms for plans that focus on a particular region or community within the overall general plan area. It refines the policies of the general plan as they apply to a smaller geographic area and is implemented by ordinances and other discretionary actions, such as zoning.

---

<sup>1</sup> In October 2003, OPR revised its General Plan Guidelines. An entire chapter is now devoted to a discussion of how sustainable development and environmental justice goals can be incorporated into the land use planning process. For further information, the reader is encouraged to obtain a copy of OPR’s General Plan Guidelines, or refer to their website at:  
[http://www.opr.ca.gov/planning/PDFs/General\\_Plan\\_Guidelines\\_2003.pdf](http://www.opr.ca.gov/planning/PDFs/General_Plan_Guidelines_2003.pdf)

### ■ **Specific Plan**

A specific plan is a hybrid that can combine policies with development regulations or zoning requirements. It is often used to address the development requirements for a single project such as urban infill or a planned community. As a result, its emphasis is on concrete standards and development criteria.

### ■ **Zoning**

Zoning is the public regulation of the use of land. It involves the adoption of ordinances that divide a community into various districts or zones. For instance, zoning ordinances designate what projects and activities can be sited in particular locations. Each zone designates allowable uses of land within that zone, such as residential, commercial, or industrial. Zoning ordinances can address building development standards, e.g., minimum lot size, maximum building height, minimum building setback, parking, signage, density, and other allowable uses.

### **Land Use Permitting**

In addition to the planning and zoning function, land use agencies issue building and business permits, and evaluate the potential environmental impacts of projects. To be approved, projects must be located in a designated zone and comply with applicable ordinances and zoning requirements.

Even if a project is sited properly in a designated zone, a land use agency may require a new source to mitigate potential localized environmental impacts to the surrounding community below what would be required by the local air district. In this case, the land use agency could condition the permit by limiting or prescribing allowable uses including operating hour restrictions, building standards and codes, property setbacks between the business property and the street or other structures, vehicle idling restrictions, or traffic diversion.

Land use agencies also evaluate the environmental impacts of proposed land use projects or activities. If a project or activity falls under CEQA, the land use agency requires an environmental review before issuing a permit to determine if there is the potential for a significant impact, and if so, to mitigate the impact or possibly deny the project.

### ■ **Land Use Permitting Process**

In California, the authority to regulate land use is delegated to city and county governments. The local land use planning agency is the local government administrative body that typically provides information and coordinates the review of development project applications. Conditional Use Permits (CUP) typically fall within a land use agency's discretionary authority and therefore are subject to CEQA. CUPs are

intended to provide an opportunity to review the location, design, and manner of development of land uses prior to project approval. A traditional purpose of the CUP is to enable a municipality to control certain uses that could have detrimental environmental effects on the community.

The process for permitting new discretionary projects is quite elaborate, but can be broken down into five fundamental components:

- Project application
- Environmental assessment
- Consultation
- Public comment
- Public hearing and decision

Project Application

The permit process begins when the land use agency receives a project application, with a detailed project description, and support documentation. During this phase, the agency reviews the submitted application for completeness. When the agency deems the application to be complete, the permit process moves into the environmental review phase.

Environmental Assessment

If the project is discretionary and the application is accepted as complete, the project proposal or activity must undergo an environmental clearance process under CEQA and the CEQA Guidelines adopted by the California Resources Agency.<sup>2</sup> The purpose of the CEQA process is to inform decision-makers and the public of the potential significant environmental impacts of a project or activity, to identify measures to minimize or eliminate those impacts to the point they are no longer significant, and to discuss alternatives that will accomplish the project goals and objectives in a less environmentally harmful manner.

**What is a “Lead Agency”?**

A lead agency is the public agency that has the principal responsibility for carrying out or approving a project that is subject to CEQA. In general, the land use agency is the preferred public agency serving as lead agency because it has jurisdiction over general land uses. The lead agency is responsible for determining the appropriate environmental document, as well as its preparation.

**What is a “Responsible Agency”?**

A responsible agency is a public agency with discretionary approval authority over a portion of a CEQA project (e.g., projects requiring a permit). As a responsible agency, the agency is available to the lead agency and project proponent for early consultation on a project to apprise them of applicable rules and regulations, potential adverse impacts, alternatives, and mitigation measures, and provide guidance as needed on applicable methodologies or other related issues.

**What is a “Commenting Agency”?**

A commenting agency is any public agency that comments on a CEQA document, but is neither a lead agency nor a responsible agency. For example, a local air district, as the agency with the responsibility for comprehensive air pollution control, could review and comment on an air quality analysis in a CEQA document for a proposed distribution center, even though the project was not subject to a permit or other pollution control requirements.

<sup>2</sup> Projects and activities that may have a significant adverse impact on the environment are evaluated under CEQA Guidelines set forth in title 14 of the California Code of Regulations, sections 15000 et seq.

To assist the lead agency in determining whether the project or activity may have a significant effect that would require the preparation of an EIR, the land use agency may consider criteria, or thresholds of significance, to assess the potential impacts of the project, including its air quality impacts. The land use agency must consider any credible evidence in addition to the thresholds, however, in determining whether the project or activity may have a significant effect that would trigger the preparation of an EIR.

The screening criteria to determine significance is based on a variety of factors, including local, state, and federal regulations, administrative practices of other public agencies, and commonly accepted professional standards. However, the final determination of significance for individual projects is the responsibility of the lead agency. In the case of land use projects, the lead agency would be the City Council or County Board of Supervisors.

A new land use plan or project can also trigger an environmental assessment under CEQA if, among other things, it will expose sensitive sites such as schools, day care centers, hospitals, retirement homes, convalescence facilities, and residences to substantial pollutant concentrations.<sup>3</sup>

CEQA only applies to “discretionary projects.” Discretionary means the public agency must exercise judgment and deliberation when deciding to approve or disapprove a particular project or activity, and may append specific conditions to its approval. Examples of discretionary projects include the issuance of a CUP, re-zoning a property, or widening of a public road. Projects that are not subject to the exercise of agency discretion, and can therefore be approved administratively through the application of set standards are referred to as ministerial projects. CEQA does not apply to ministerial projects.<sup>4</sup> Examples of typical ministerial projects include the issuance of most building permits or a business license.

Once a potential environmental impact associated with a project is identified through an environmental assessment, mitigation must be considered. A land use agency should incorporate mitigation measures that are suggested by the local air district as part of the project review process.

### Consultation

Application materials are provided to various departments and agencies that may have an interest in the project (e.g., air pollution, building, police, fire, water agency, Fish and Game, etc.) for consultation and input.

---

<sup>3</sup> Readers interested in learning more about CEQA should contact OPR or visit their website at <http://www.opr.ca.gov/>.

<sup>4</sup> See California Public Resources Code section 21080(b)(1).

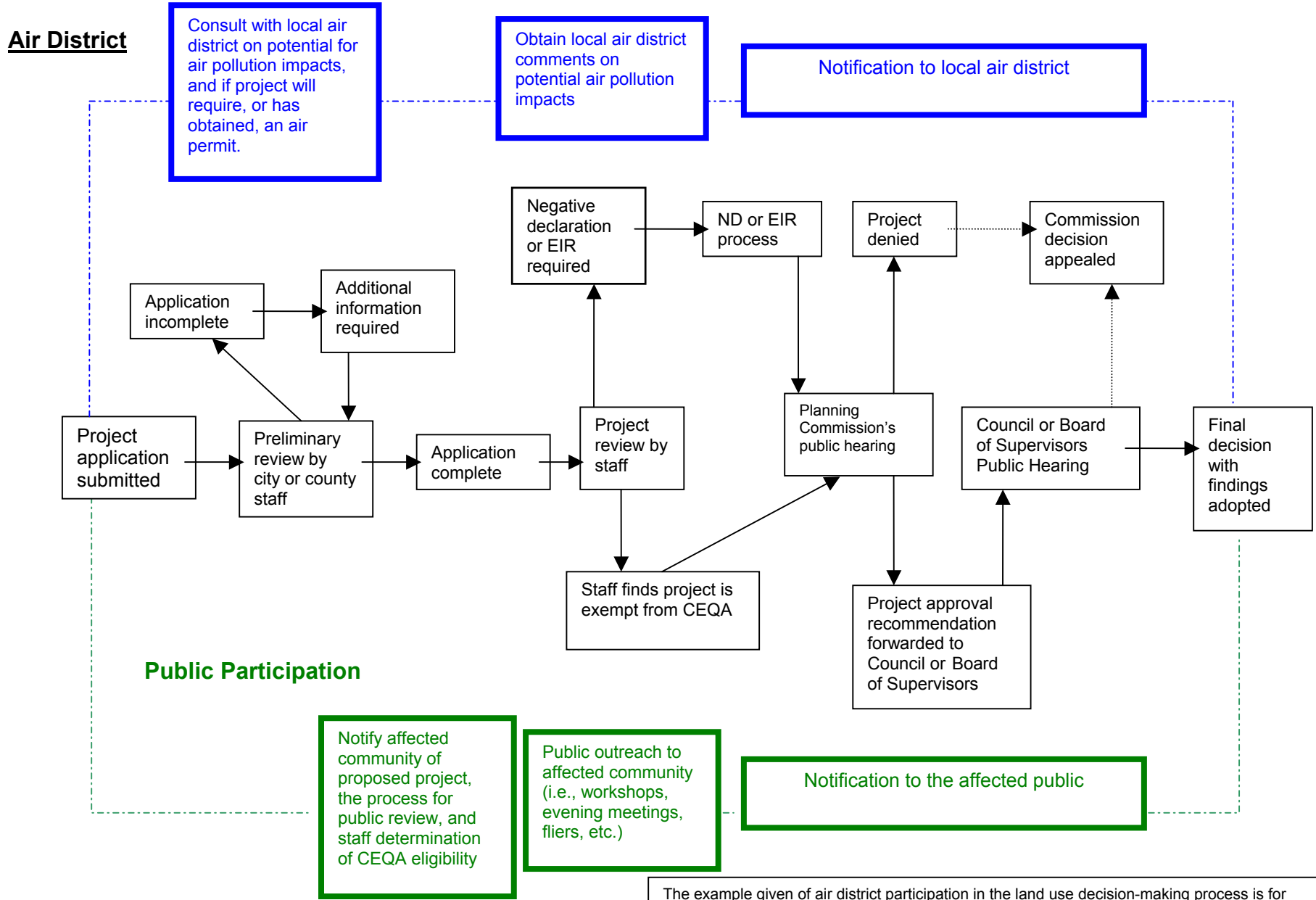
Public Comment

Following the environmental review process, the Planning Commission reviews application along with the staff's report on the project assessment and a public comment period is set and input is solicited.

Public Hearing and Decision

Permit rules vary depending on the particular permit authority in question, but the process generally involves comparing the proposed project with the land use agency standards or policies. The procedure usually leads to a public hearing, which is followed by a written decision by the agency or its designated officer. Typically, a project is approved, denied, or approved subject to specified conditions.

**USE PERMIT (DISCRETIONARY ACTION) REVIEW PROCESS\***



The example given of air district participation in the land use decision-making process is for illustrative purposes only. In reality, the land use siting process involves the ongoing participation of multiple affected agencies and stakeholders throughout the process.

## GLOSSARY OF KEY AIR POLLUTION TERMS

**Air Pollution Control Board or Air Quality Management Board:** Serves as the governing board for local air districts. It consists of appointed or elected members from the public or private sector. It conducts public hearings to adopt local air pollution regulations.

**Air Pollution Control Districts or Air Quality Management Districts (local air district):** A county or regional agency with authority to regulate stationary and area sources of air pollution within a given county or region. Governed by a district air pollution control board.

**Air Pollution Control Officer (APCO):** Head of a local air pollution control or air quality management district.

**Air Toxic Control Measures (ATCM):** A control measure adopted by the ARB (Health and Safety Code section 39666 et seq.), which reduces emissions of toxic air contaminants.

**Ambient Air Quality Standards:** An air quality standard defines the maximum amount of a pollutant that can be present in the outdoor air during a specific time period without harming the public's health. Only U.S. EPA and the ARB may establish air quality standards. No other state has this authority. Air quality standards are a measure of clean air. More specifically, an air quality standard establishes the concentration at which a pollutant is known to cause adverse health effects to sensitive groups within the population, such as children and the elderly. Federal standards are referred to as National Ambient Air Quality Standards (NAAQS); state standards are referred to as California ambient air quality standards (CAAQS).

**Area-wide Sources:** Sources of air pollution that individually emit small amounts of pollution, but together add up to significant quantities of pollution. Examples include consumer products, fireplaces, road dust, and farming operations.

**Attainment vs. Nonattainment Area:** An attainment area is a geographic area that meets the National Ambient Air Quality Standards for the criteria pollutants and a non-attainment area is a geographic area that doesn't meet the NAAQS for criteria pollutants.

**Attainment Plan:** Attainment plans lay out measures and strategies to attain one or more air quality standards by a specified date.

**California Clean Air Act (CCAA):** A California law passed in 1988, which provides the basis for air quality planning and regulation independent of federal regulations. A major element of the Act is the requirement that local air districts in violation of the CAAQS



must prepare attainment plans which identify air quality problems, causes, trends, and actions to be taken to attain and maintain California's air quality standards by the earliest practicable date.

**California Environmental Quality Act (CEQA):** A California law that sets forth a process for public agencies to make informed decisions on discretionary project approvals. The process helps decision-makers determine whether any potential, significant, adverse environmental impacts are associated with a proposed project and to identify alternatives and mitigation measures that will eliminate or reduce such adverse impacts.<sup>1</sup>

**California Health and Safety Code:** A compilation of California laws, including state air pollution laws, enacted by the Legislature to protect the health and safety of people in California. Government agencies adopt regulations to implement specific provisions of the California Health and Safety Code.

**Clean Air Act (CAA):** The federal Clean Air Act was adopted by the United States Congress and sets forth standards, procedures, and requirements to be implemented by the U.S. Environmental Protection Agency (U.S. EPA) to protect air quality in the United States.

**Councils of Government (COGs):** There are 25 COGs in California made up of city and county elected officials. COGs are regional agencies concerned primarily with transportation planning and housing; they do not directly regulate land use.

**Criteria Air Pollutant:** An air pollutant for which acceptable levels of exposure can be determined and for which an ambient air quality standard has been set. Examples include ozone, carbon monoxide, nitrogen dioxide, sulfur dioxide, and PM10 and PM2.5. The term "criteria air pollutants" derives from the requirement that the U.S. EPA and ARB must describe the characteristics and potential health and welfare effects of these pollutants. The U.S. EPA and ARB periodically review new scientific data and may propose revisions to the standards as a result.

**District Hearing Board:** Hears local air district permit appeals and issues variances and abatement orders. The local air district board appoints the members of the hearing board.

**Emission Inventory:** An estimate of the amount of pollutants emitted into the atmosphere from mobile, stationary, area-wide, and natural source categories over a specific period of time such as a day or a year.

**Environmental Impact Report (EIR):** The public document used by a governmental agency to analyze the significant environmental effects of a proposed project, to identify

---

<sup>1</sup> To track the submittal of CEQA documents to the State Clearinghouse within the Office of Planning and Research, the reader can refer to CEQAnet at <http://www.ceqanet.ca.gov>.

alternatives, and to disclose possible ways to reduce or avoid the possible negative environmental impacts.

**Environmental Justice:** California law defines environmental justice as the fair treatment of people of all races, cultures, and incomes with respect to the development, adoption, implementation, and enforcement of environmental laws, regulations, and policies (California Government Code sec.65040.12(c)).

**General Plans:** A statement of policies developed by local governments, including text and diagrams setting forth objectives, principles, standards, and plan proposals for the future physical development of the city or county.

**Hazardous Air Pollutants (HAPs):** An air pollutant listed under section 112 (b) of the federal Clean Air Act as particularly hazardous to health. U.S. EPA identifies emission sources of hazardous air pollutants, and emission standards are set accordingly. In California, HAPs are referred to as toxic air contaminants.

**Land Use Agency:** Local government agency that performs functions associated with the review, approval, and enforcement of general plans and plan elements, zoning, and land use permitting. For purposes of this Handbook, a land use agency is typically a local planning department.

**Mobile Source:** Sources of air pollution such as automobiles, motorcycles, trucks, off-road vehicles, boats, and airplanes.

**National Ambient Air Quality Standard (NAAQS):** A limit on the level of an outdoor air pollutant established by the US EPA pursuant to the Clean Air Act. There are two types of NAAQS. Primary standards set limits to protect public health and secondary standards set limits to protect public welfare.

**Negative Declaration (ND):** When the lead agency (the agency responsible for preparing the EIR or ND) under CEQA, finds that there is no substantial evidence that a project may have a significant environmental effect, the agency will prepare a "negative declaration" instead of an EIR.

**New Source Review (NSR):** A federal Clean Air Act requirement that state implementation plans must include a permit review process, which applies to the construction and operation of new or modified stationary sources in nonattainment areas. Two major elements of NSR to reduce emissions are best available control technology requirements and emission offsets.

**Office of Planning and Research (OPR):** OPR is part of the Governor's office. OPR has a variety of functions related to local land-use planning and environmental programs. It provides General Plan Guidelines for city and county planners, and coordinates the state clearinghouse for Environmental Impact Reports.

**Ordinance:** A law adopted by a City Council or County Board of Supervisors. Ordinances usually amend, repeal or supplement the municipal code; provide zoning specifications; or appropriate money for specific purposes.

**Overriding Considerations:** A ruling made by the lead agency in the CEQA process when the lead agency finds the importance of the project to the community outweighs potential adverse environmental impacts.

**Public Comment:** An opportunity for the general public to comment on regulations and other proposals made by government agencies. You can submit written or oral comments at the public meeting or send your written comments to the agency.

**Public Hearing:** A public hearing is an opportunity to testify on a proposed action by a governing board at a public meeting. The public and the media are welcome to attend the hearing and listen to, or participate in, the proceedings.

**Public Notice:** A public notice identifies the person, business, or local government seeking approval of a specific course of action (such as a regulation). It describes the activity for which approval is being sought, and describes the location where the proposed activity or public meeting will take place.

**Public Nuisance:** A public nuisance, for the purposes of air pollution regulations, is defined as a discharge from any source whatsoever of such quantities of air contaminants or other material which cause injury, detriment, nuisance, or annoyance to any considerable number of persons or to the public, or which endanger the comfort, repose, health, or safety of any such persons or the public, or which cause, or have a natural tendency to cause, injury or damage to business or property. (Health and Safety Code section 41700).

**Property Setback:** In zoning parlance, a setback is the minimum amount of space required between a lot line and a building line.

**Risk:** For cancer health effects, risk is expressed as an estimate of the increased chances of getting cancer due to facility emissions over a 70-year lifetime. This increase in risk is expressed as chances in a million (e.g., 10 chances in a million).

**Sensitive Individuals:** Refers to those segments of the population most susceptible to poor air quality (i.e., children, the elderly, and those with pre-existing serious health problems affected by air quality).

**Sensitive Sites or Sensitive Land Uses:** Land uses where sensitive individuals are most likely to spend time, including schools and schoolyards, parks and playgrounds, day care centers, nursing homes, hospitals, and residential communities.

**Setback:** An area of land separating one parcel of land from another that acts to soften or mitigate the effects of one land use on the other.

**State Implementation Plan (SIP):** A plan prepared by state and local agencies and submitted to U.S. EPA describing how each area will attain and maintain national ambient air quality standards. SIPs include the technical information about emission inventories, air quality monitoring, control measures and strategies, and enforcement mechanisms. A SIP is composed of local air quality management plans and state air quality regulations.

**Stationary Sources:** Non-mobile sources such as power plants, refineries, and manufacturing facilities.

**Toxic Air Contaminant (TAC):** An air pollutant, identified in regulation by the ARB, which may cause or contribute to an increase in deaths or in serious illness, or which may pose a present or potential hazard to human health. TACs are considered under a different regulatory process (California Health and Safety Code section 39650 et seq.) than pollutants subject to State Ambient Air Quality Standards. Health effects associated with TACs may occur at extremely low levels. It is often difficult to identify safe levels of exposure, which produce no adverse health effects.

**Urban Background:** The term is used in this Handbook to represent the ubiquitous, elevated, regional air pollution levels observed in large urban areas in California.

**Zoning ordinances:** City councils and county boards of supervisors adopts zoning ordinances that set forth land use classifications, divides the county or city into land use zones as delineated on the official zoning, maps, and set enforceable standards for future develop

